

SpyderPRINT

QUICK START GUIDE



What You Get

- Spyder®PRINT spectrophotometer
- Sensor Base
- SpyderGuide
- USB cord
- Serial Number
- Welcome Card – Including warranty information and download instructions

System Requirements

- USB port
- Windows 7 32/64, Windows 8.0, 8.1 32/64, 10 32/64
- Mac OS X 10.7 or higher
- Monitor Resolution 1280x768 or greater, 16-bit video card (24 recommended), 1GB of available RAM, 500MB of available hard disk space
- Internet connection for software download

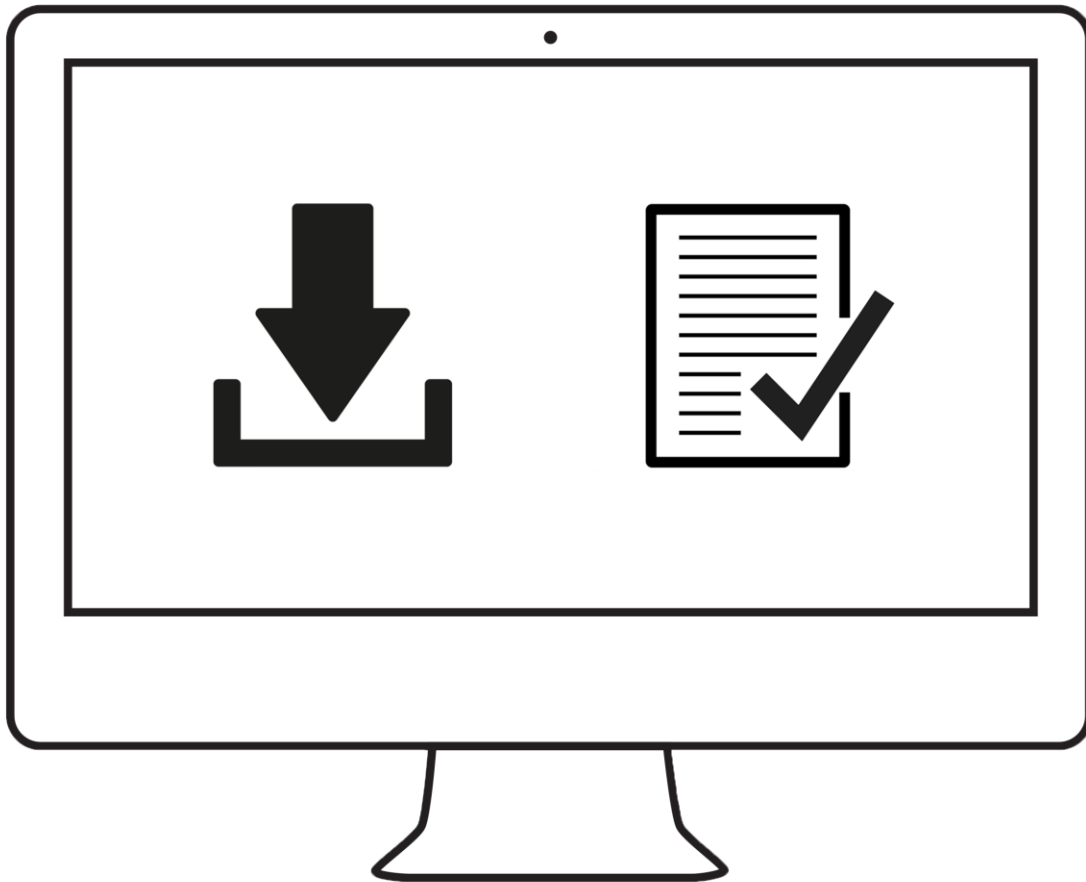
Support

support.datacolor.com



Step 1 – Install and Activate

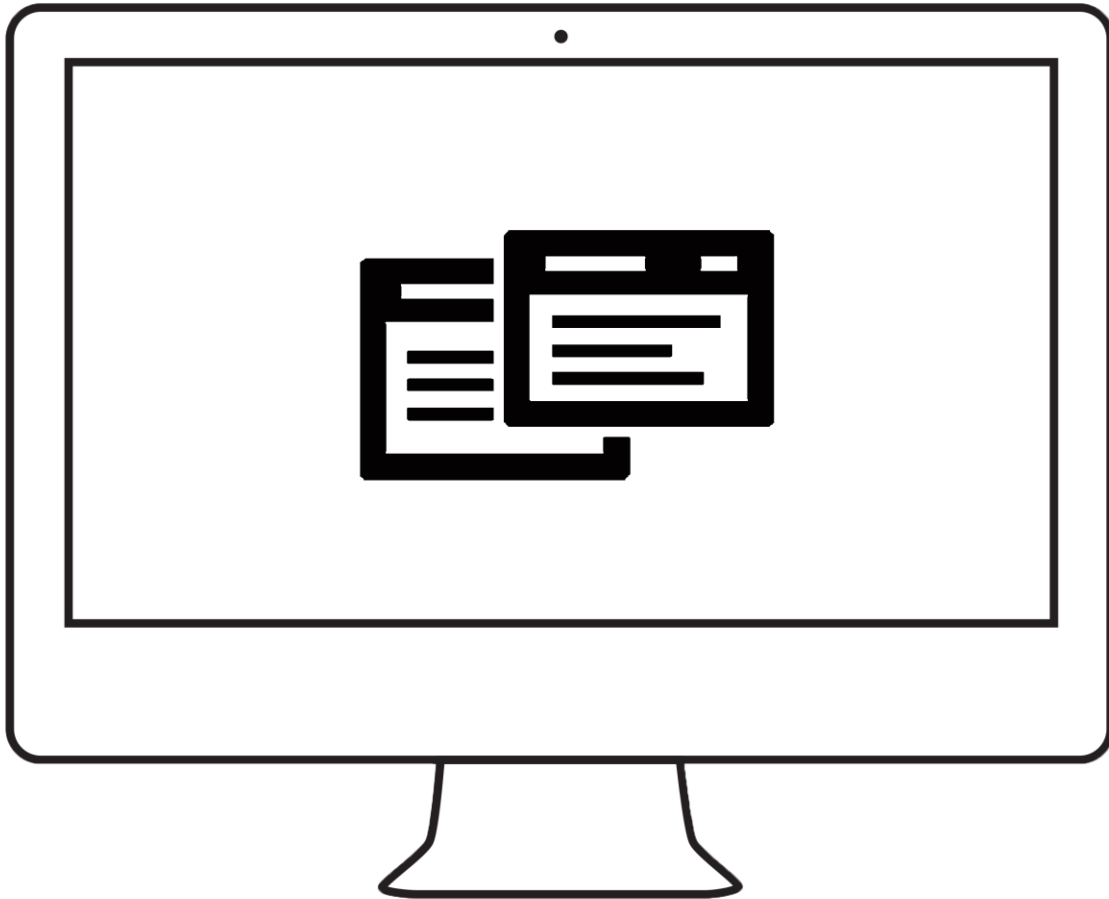
Install the SpyderPRINT Software from the [Datacolor Website](#). After the installation is complete, plug in your SpyderPRINT and launch the SpyderPRINT software to begin the activation and registration process. This will automatically start your warranty. Use the Serial Number included in your SpyderPRINT package to activate your software.



Step 2 – Printer Settings

Change the settings for the printer you want to profile to:

- Landscape orientation
- 0.25 in (.635 cm) margins
- Single sided
- Turn off any color management.



Step 3 – Print Target

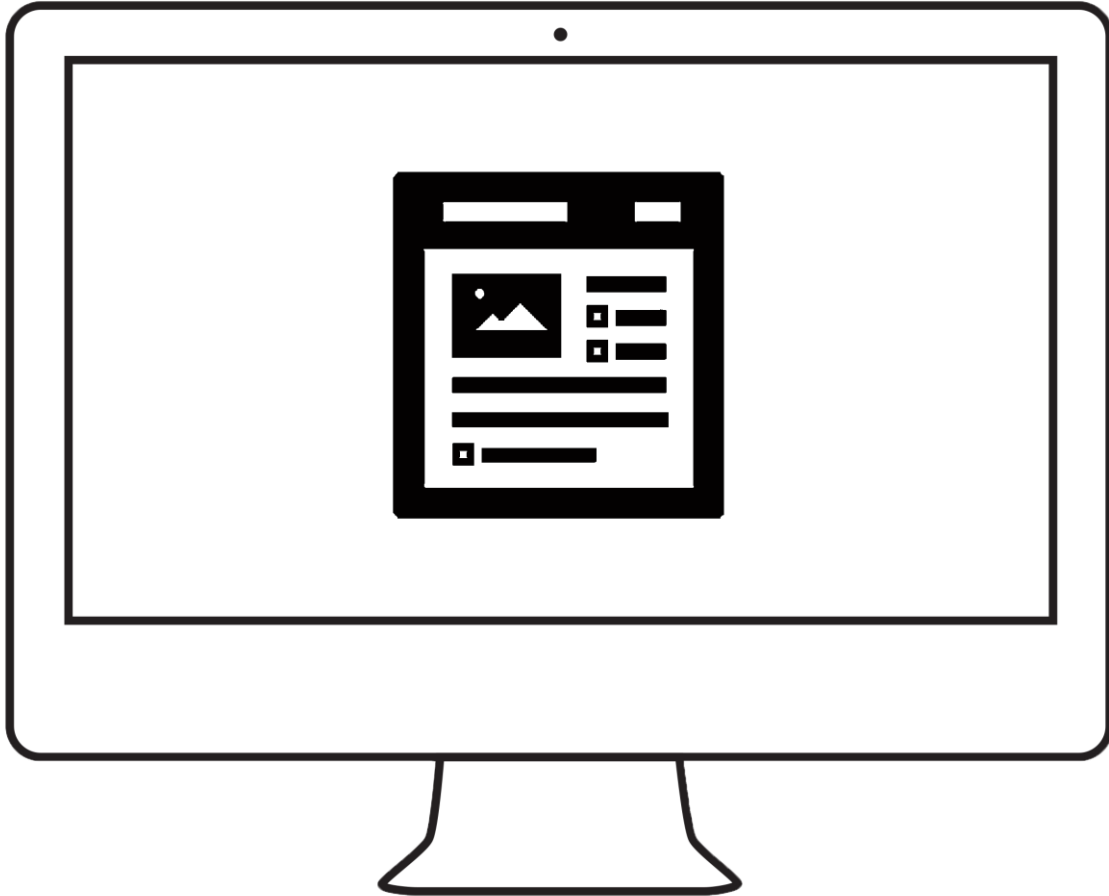
Follow the on-screen instructions to specify the printer, paper type, and select the target to be printed.



It is recommended to wait 15-30 minutes for the ink to dry before moving further.

Step 5 – Apply Printer Profile

After the profile has been created, evaluated, and saved, remember to select this profile in the printer dialog box of the application you are using to apply it to your prints.



Datacolor, Spyder, SpyderPRINT and SpyderGUIDE are trademarks or registered trademarks of Datacolor.

© Copyright 2015 Datacolor. All rights reserved.