

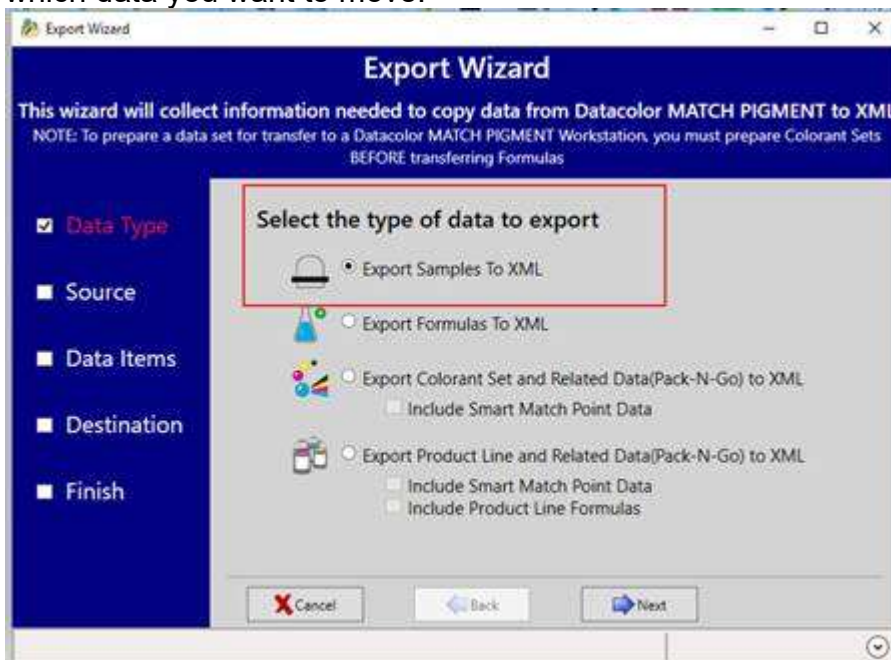
Export/Import Functions in DMPPlus

If moving “bulk” data between Datacolor Match Pigment systems, it is easiest to use the Export and Import Wizards available on the DMP Navigator Bar:

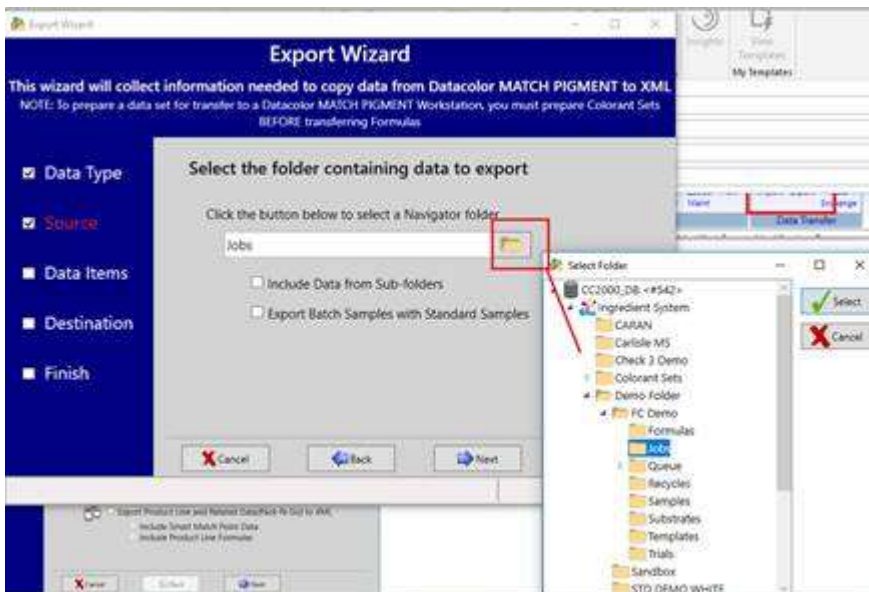


EXPORT

From the **source** PC select “Export” and the wizard will walk you through the selection of which data you want to move:



Make selection of the data source folder:



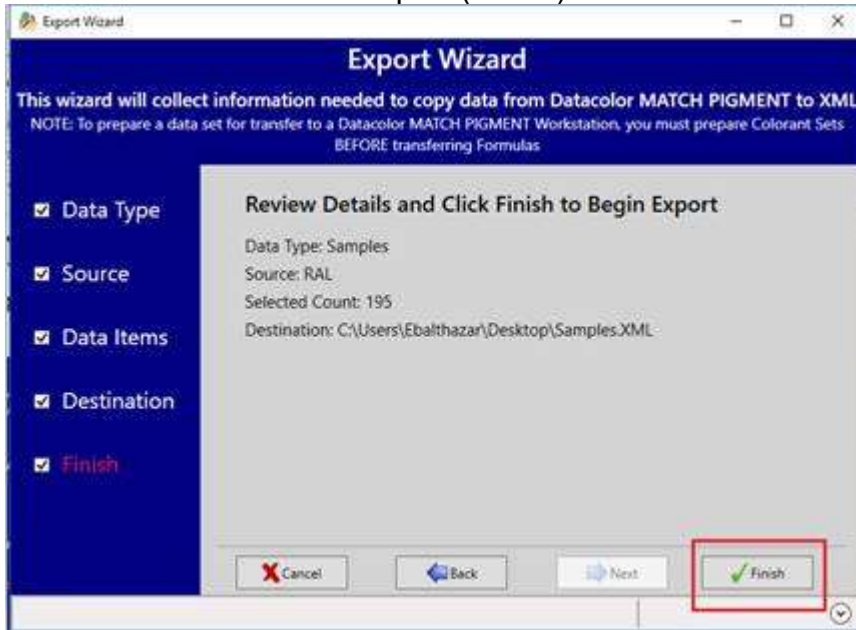
Confirm samples to include in the export:



Pick output file name and location:



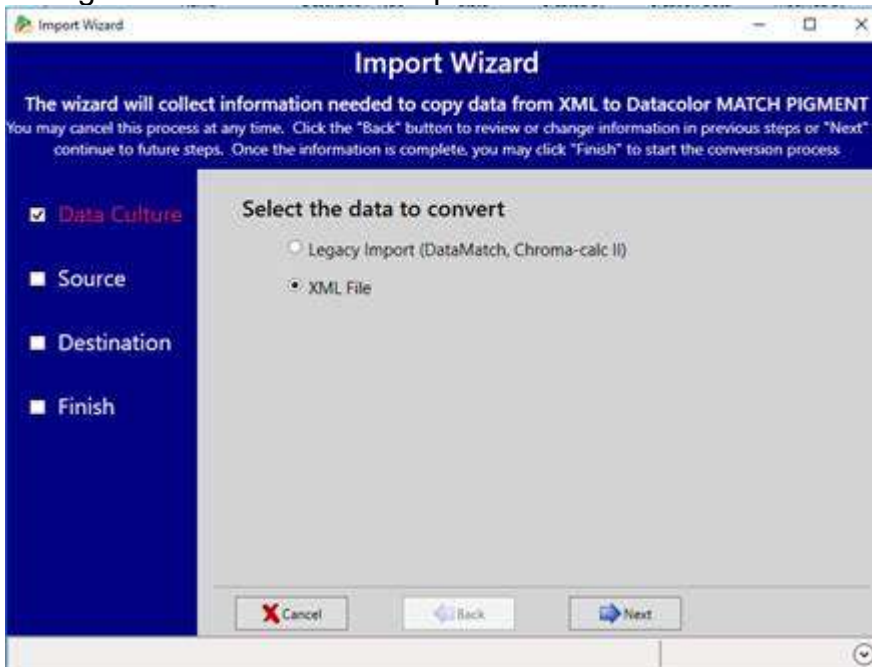
Confirm and execute the export (Finish):



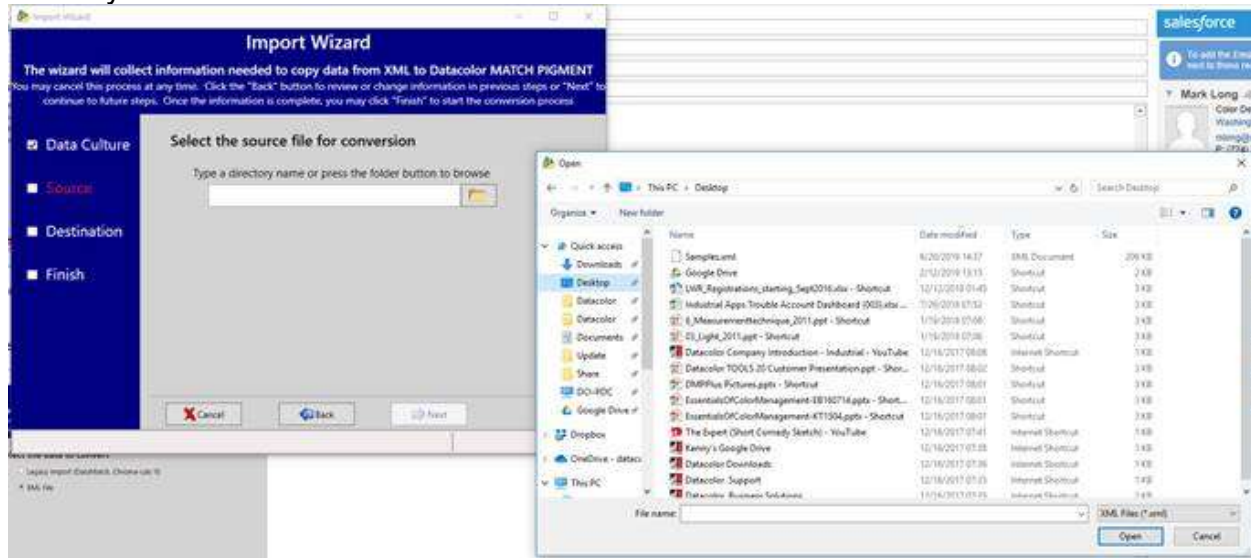
Move the file to the target PC.

IMPORT

On the **target** PC select "Import" from the DMP Navigator Bar and the wizard will walk you through the selection of the import file and database folder for the import :

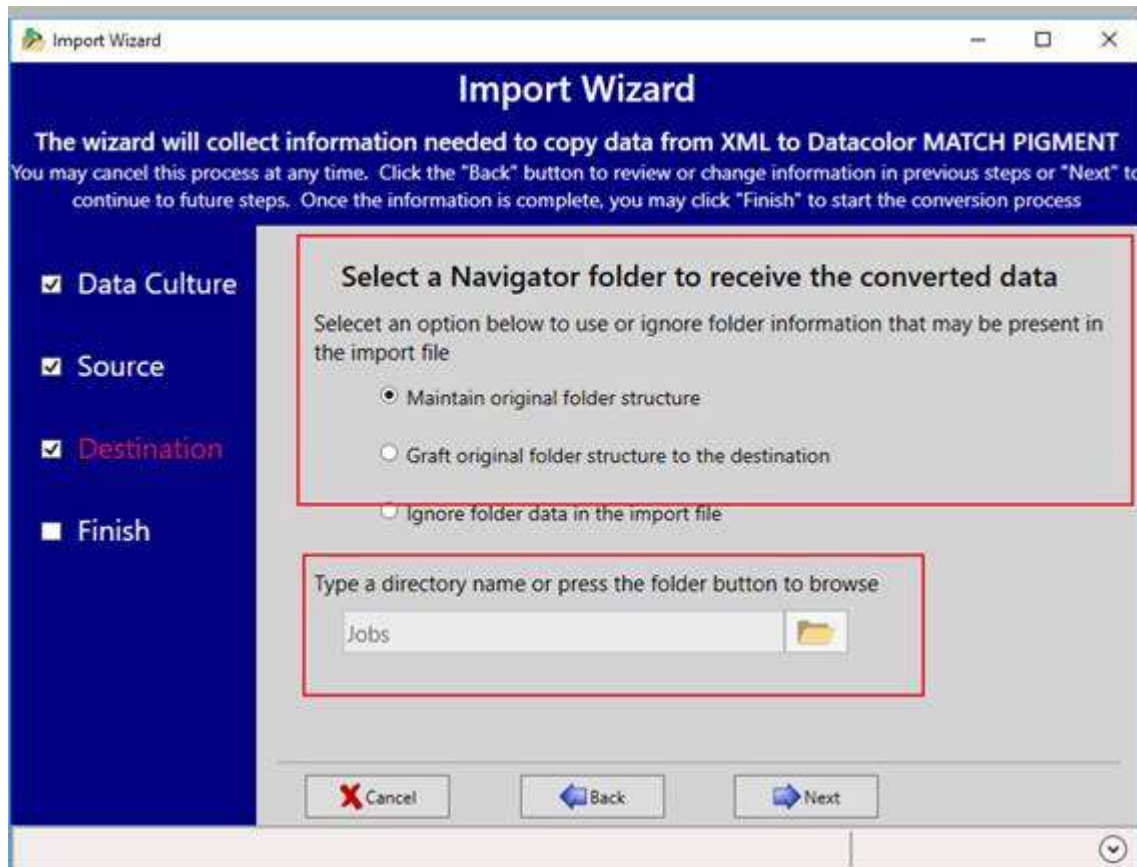


Select your source file:



Select how/where you want the data imported:

- Maintain original folder structure
 - Usually will place under the top level Ingredient System.
- Graft original folder structure to destination.
 - Use if wanting to create subfolder under a new parent folder.



Select how duplicates are to be handled and execute the import (Finish):

