

---

# Report

## Dyes parameters and auxiliaries

### Overview

Concerned Supervisor

Subject Use of the report 'Dyes parameters and auxiliaries'. This report is useful to check the information you introduce in dyestuffs, in tab 'Dyestuff' tables 'Parameters' and 'Auxiliaries'.

Relative documents – IP2 TN011 - Quantity related to each dye

**Version**

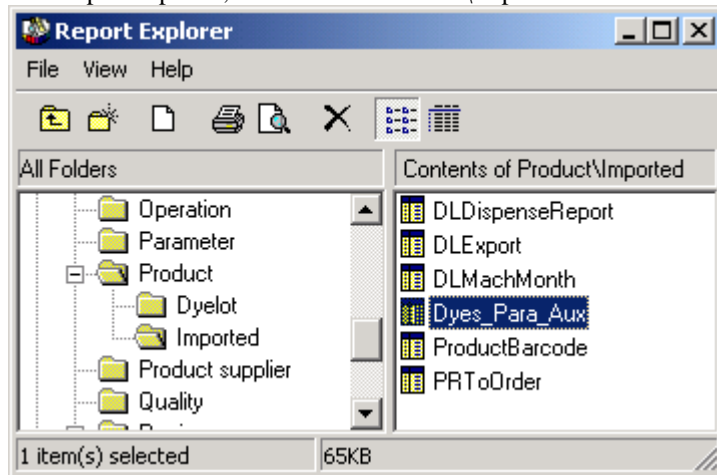
## General

This report has been written on the 17th of January 2003  
at ITMProcess v2.3.1  
with ReportBuilder v6.03

It should be compatible with ITMProcess v2.3.0 up.

## Install

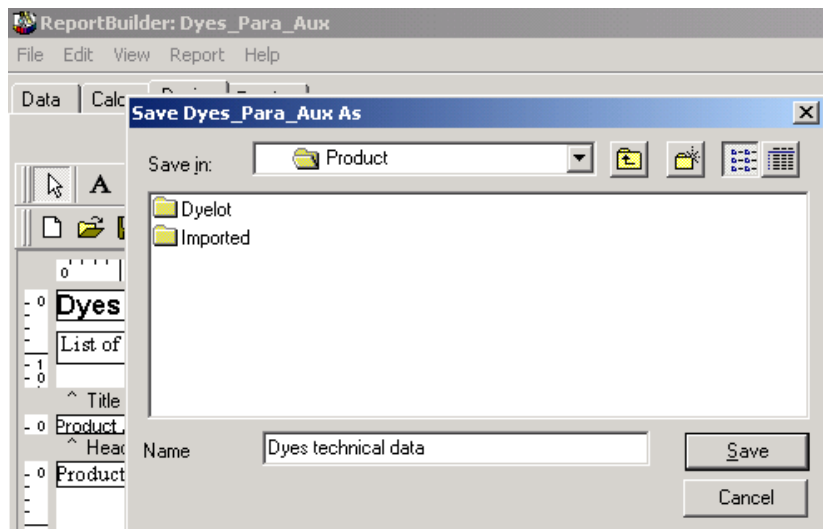
The report is automatically installed with ITMProcess v2.3.1. You will find it in ReportExplorer, in the folder 'Product\Imported'.



As this folder is common to dyestuffs and auxiliaries, the report will be accessible from both items, even if it is only foreseen for dyestuffs.

You may customize this report. To avoid that your customized report will be overwritten during a software update, copy the report in 'Product' folder and rename it.

- Double click the report to open it.
- Run the command in menu File | Save as ...
- Select the folder 'Product', type a name and click [OK].

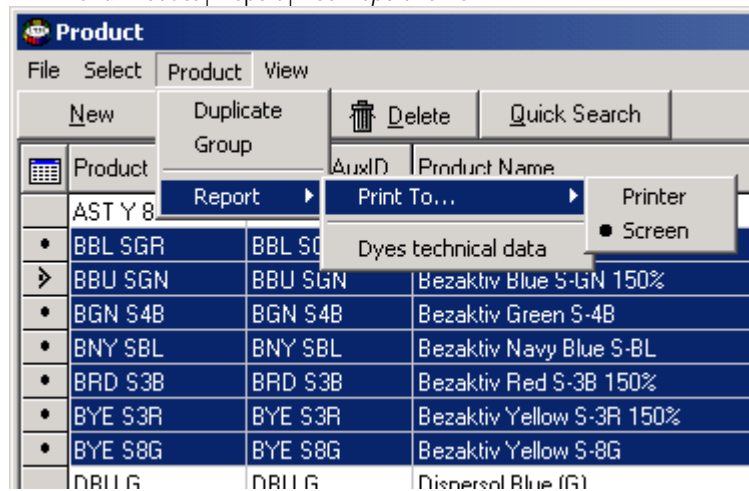


# Configure

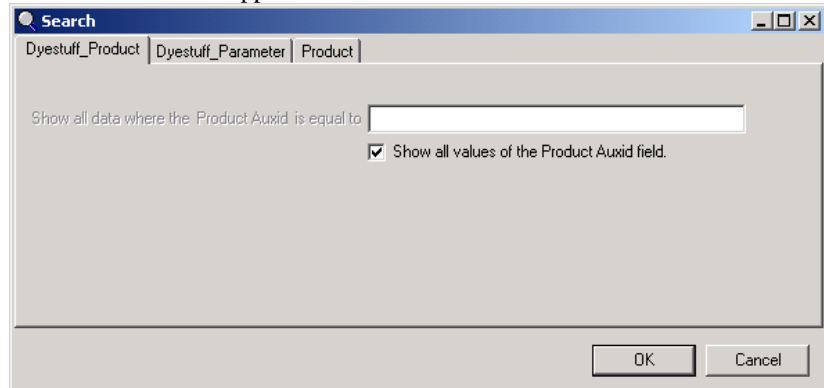
The report uses products AuxID and parameters ID. Be sure that all dyes have an AuxID to use the report as it is.

## Use

- Open the dyestuffs list and select the dyes for the report.  
To use all dyestuffs, don't select any dyestuffs (or select all of them).
- Select the report destination: Printer or screen.  
Menu Product | Report | Print to ...
- Select the report  
menu Product | Report | *Your report name*

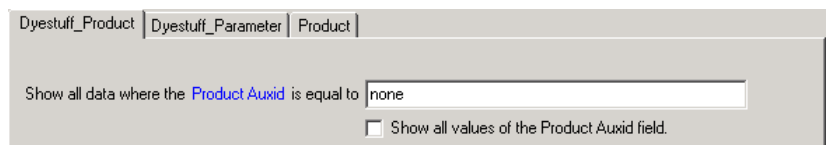


The Search window appears.



- In tab Dyestuff\_Product and Dyestuff\_Parameter, select the auxiliary or the parameter you want in the report.

If you don't want any auxiliary, you may type an inexistent AuxID (e.g. null).



If you want one parameter, type its Id.

Dyestuff\_Product Dyestuff\_Parameter Product

Show all data where the Parameter Id is equal to

Show all values of the Parameter Id field.

If you want to see all parameters, tick Show all values.

- The tab Product allows modifying the list of dyestuffs. This is generally not needed as you have already selected them in the dyestuff list.
- Click [OK], and then the report will be generated.

**Dyes with parameters and auxiliaries details**  
List of selected dyestuffs (or all) with related parameters and auxiliaries (from tab Dyestuff).

Product AuxID	Product Name	Param/Aux	Case	Value
BBL SGR	Bezaktiv Black S-GR			
BBU SGN	Bezaktiv Blue S-GN 150%	DyesB	-	0,5 * RecipeAmount('BBU SG
BGN S4B	Bezaktiv Green S-4B	DyesB	-	Formula
BNY SBL	Bezaktiv Navy Blue S-BL			
BRD S3B	Bezaktiv Red S-3B 150%	DyesB	- <i>p LiquorRatio &gt; 10</i>	Formula 1
EYE S3R	Bezaktiv Yellow S-3R 150%			
EYE S8G	Bezaktiv Yellow S-8G	DyesB		0,7000

The report includes the case (cases at top of formula windows) and of course the value of the parameter or the auxiliary. When this value is a simple formula (one row), the formula is printed, otherwise 'Formula' is printed. On the right side of the report are also printed the minimum and maximum values of the formula.