

Datacolor MATCH^{TEXTILE}

Installation Guide

Datacolor MATCH^{TEXTILE™} Stand-Alone Installation Guide (July, 2021)

All efforts have been made to ensure the accuracy of the information presented in this format. However, should any errors be detected, Datacolor appreciates your efforts to notify us of these oversights.

Changes are periodically made to this information and are incorporated into forthcoming versions. Datacolor reserves the right to make improvements and/or changes in the product(s) and/or program(s) described in this material at any time.

© 2008 Datacolor. Datacolor, SPECTRUM and other Datacolor product trademarks are the property of Datacolor.

Microsoft and Windows are either registered trademarks of Microsoft Corporation in the United States and/or other countries.

To obtain information on local agents, contact either of the offices listed below, or visit our website at www.datacolor.com.

Support Questions?

If you need help with a Datacolor product, please contact one of our top-rated technical support teams located around the world for your convenience. You can find contact information below for the Datacolor office in your area.

Americas

+1.609.895.7465
+1.800.982.6496 (toll-free)
+1.609.895.7404 (fax)
NSASupport@datacolor.com

Europe

+41.44.835.3740
+41.44.835.3749 (fax)
EMASupport@datacolor.com

Asia Pacific

+852.2420.8606
+852.2420.8320 (fax)
ASPSupport@datacolor.com

Or Contact Your Local Representative

Datacolor has representatives in over 60 countries.

For a complete list, visit www.datacolor.com/locations.

Manufactured by Datacolor
5 Princess Road
Lawrenceville, NJ 08648
1.609.924.2189

Committed to Excellence. Dedicated to Quality. Certified to ISO 9001 in Manufacturing Centers Worldwide.

Contents

1 INSTALLATION OVERVIEW.....	3
SYSTEM REQUIREMENTS	3
Overview	4
Before you begin	4
2 INSTALLATION PROCEDURE	5
3 VALIDATING DATACOLOR SOFTWARE.....	18

1 Installation Overview

This document describes the installation of Datacolor Software to your computer's hard disk. If you have purchased your computer from us, the software will be already installed. If you purchased your own computer, follow these instructions to install our software on your computer.

Before you begin the installation, you should have all installation USB's, and Microsoft Windows* should be properly installed on your computer.

1.1 System Requirements

The system requirements shown below are the minimum configuration to ensure effective operation of the standard Datacolor MATCH ^{TEXTILE} software. Configurations below stated requirements may work but are not supported by Datacolor.

Component	Recommended	
Processor	Dual Core processor	1
Memory RAM	8 GB	1
Free Hard Drive Capacity	500 GB	1
Video Resolution	True Color	2
Available Ports	(1) RS-232 Serial (for older spectrophotometers) (3) USB	3
Operating System	Windows 10 (32 or 64 bit)	4
Email (for supported level)	Outlook 2007 or above, POP3	
Authenticated Sybase Database supplied with the system	Sybase 12.0.1. EBF 3994	
Optional Textile Database for SQL upon request	Microsoft SQL Server 2012	5
Server OS	Microsoft Server 2016	6

Notes:

- 1) Minimum system configurations may limit performance, data capacity and operation of some features. Faster processor, more memory and faster hard drives will significantly enhance performance.
- 2) Accurate on-screen color display requires monitor calibration and true-color video mode.
- 3) Datacolor spectrophotometers use either an RS-232 Serial or USB connectors. Datacolor Spyder5™ requires a universal serial bus (USB) connection.
Printer port requirements (Parallel or USB...) depend on the specific printer selected.
- 4) Windows 32 bit and 64 bit operating systems are supported. 64 bit hardware running Windows 32 bit operating system is supported. Datacolor Tools is a 32 bit application. 64 bit hardware running Windows 32 bit operating system is supported.
- 5) Microsoft SQL Server 2012 is supported on Tools textile database..
- 6) Windows Server 2016 is supported.
- 7) Color Gamut Mapping is currently supported by NVidia GeForce GT 1030.

Overview

The Datacolor MATCH^{TEXTILE} product includes both Datacolor MATCH^{TEXTILE} and Datacolor TOOLS. These are two separate programs contained on separate USB's. *Please follow these instructions, to insure successful installation of Datacolor MATCH^{TEXTILE}.*

NOTE

If Sybase V12 is not installed on the system you cannot complete the installation of Datacolor MATCH^{PIGMENT}.

Before You Begin

- Microsoft Windows® should be properly installed on your computer.
- You must have Windows Administrator rights to install this software.
- **Restart the system before installing the software.** This removes any memory-resident modules that may interfere with the installation, and is especially important if you have been running a previous version of Datacolor MATCH^{TEXTILE}.
- Install Sybase V12 database management software.
- Close all other programs that are running.
- Have all program installation readily available.
- Install Datacolor MATCH^{TEXTILE}. before installing Datacolor TOOLS.

Important, Before You Begin! *You must have Administrator Rights to install this software and you must have installed Sybase first!*

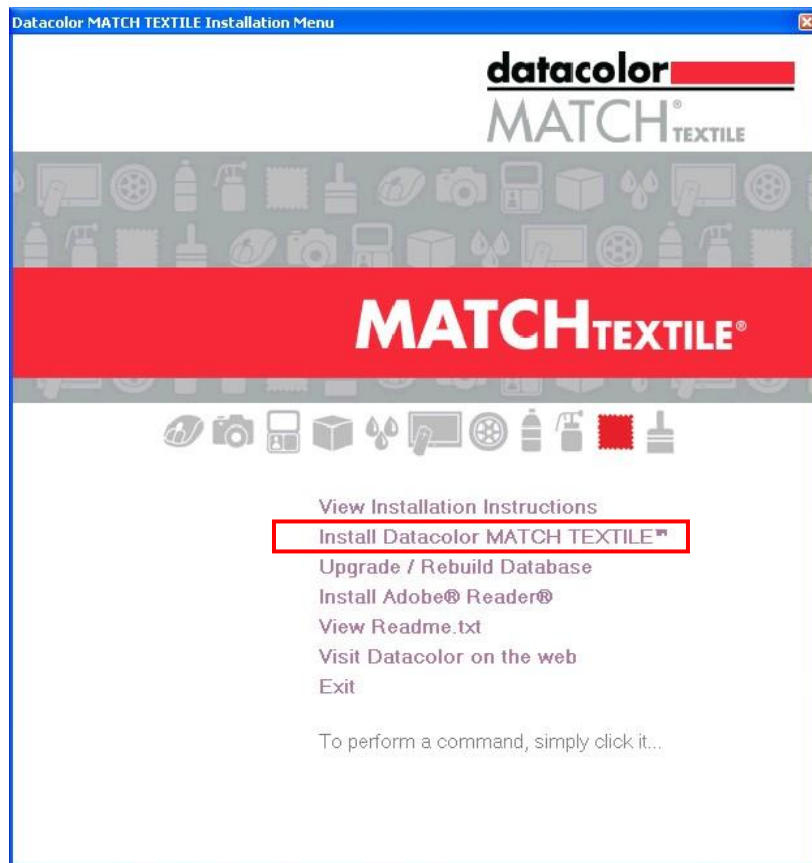
2 Installation Procedure

To install Datacolor MATCH^{TEXTILE}

1. Place the Datacolor MATCH Textile USB into the port.
2. Select the Menu.exe

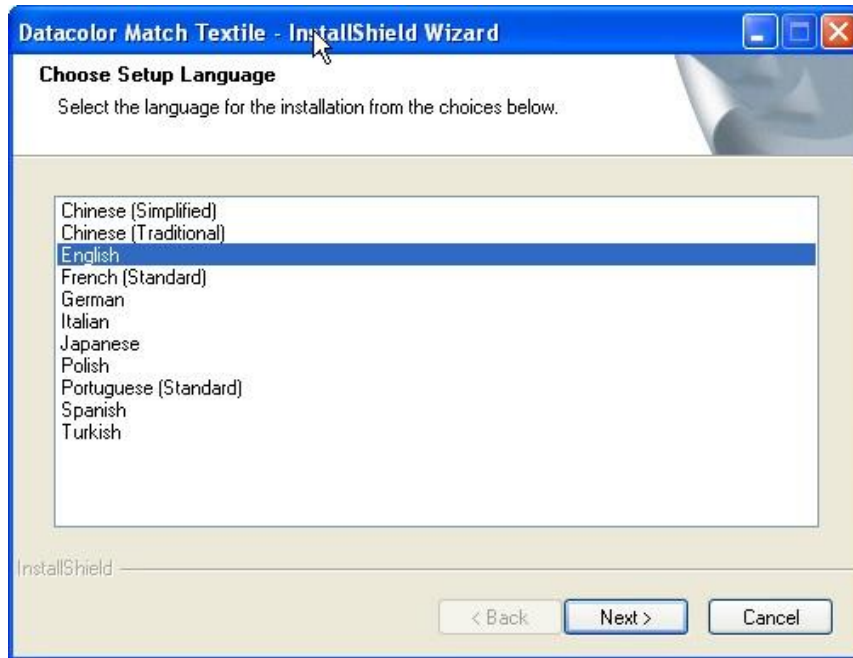


The Main Installation menu should appear automatically:



3. When the Main Installation Menu is displayed, choose **"Install Datacolor Match Textile"**
The Datacolor MATCH ^{TEXTILE} installation will guide you through installing Datacolor MATCH^{TEXTILE} on your computer

Select a language from the list box. (Language include Chinese (simplified), Chinese (traditional), English, French (standard), German, Italian, Japanese, Polish, Portuguese (standard), Spanish and Turkish.)

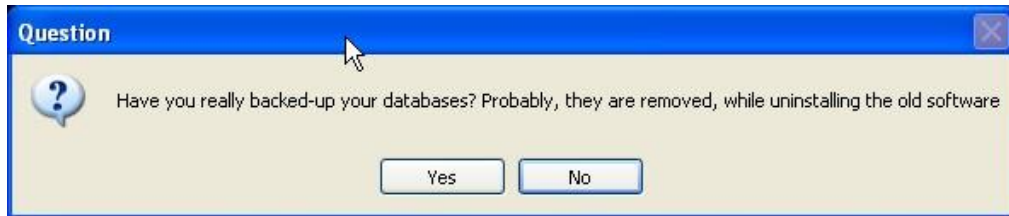
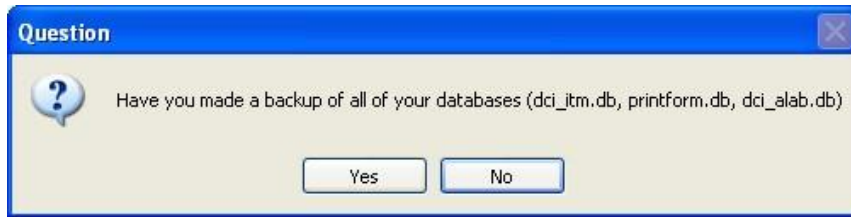


Click **"Next"**. The installation wizard will start - follow the prompts to install Datacolor Match on your computer.

The next dialogs only appear if pre Spectrum software (DCIMatch 1.4.x and older) is already installed on the system. If it's a new installation the Setup proceeds with the [Welcome](#) dialog.

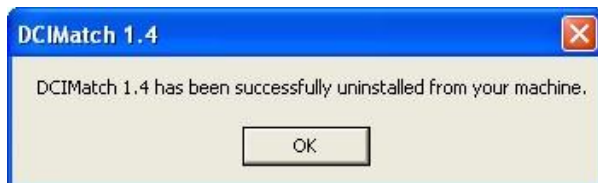
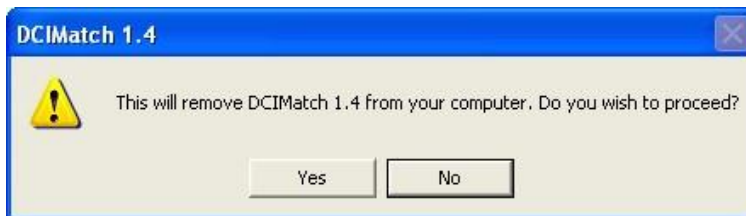
When you upgrade from DCIMatch1.x to Datacolor MATCH ^{TEXTILE} v1.6, the Setup uninstalls the old software before the new Software is installed (DCIMatch; SmartSort; .CenterSiceQC, Fibramix, matchExpress or Matchpoint)

The Setup asks you twice if you have made a backup of your databases. If not, click 'No' to exit the setup.

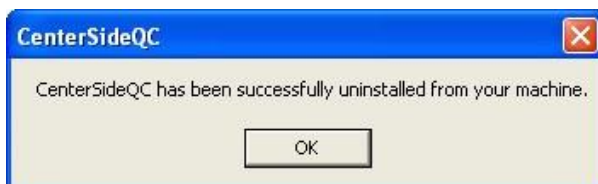
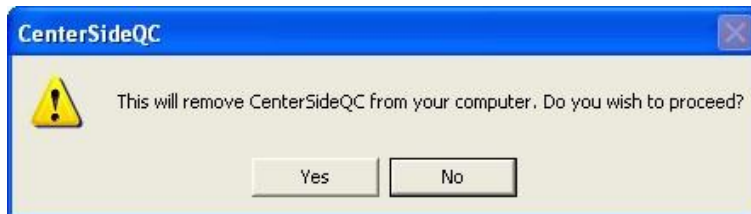


Depending on the installed software you are informed about the un-installation process. The Setup program shows a message for each program that should be installed.

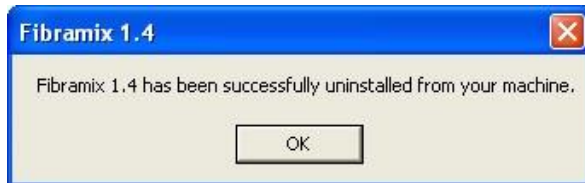
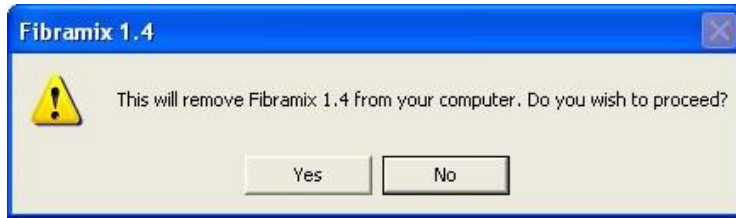
■ Uninstalling DCIMatch



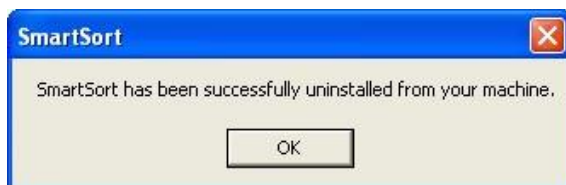
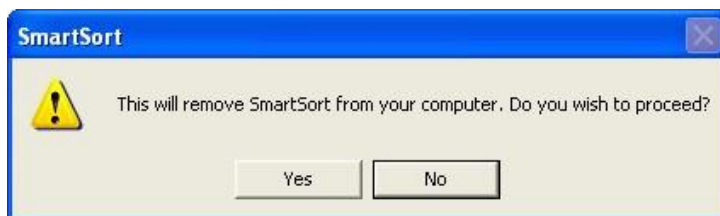
■ Uninstalling CenterSideQC (if installed)



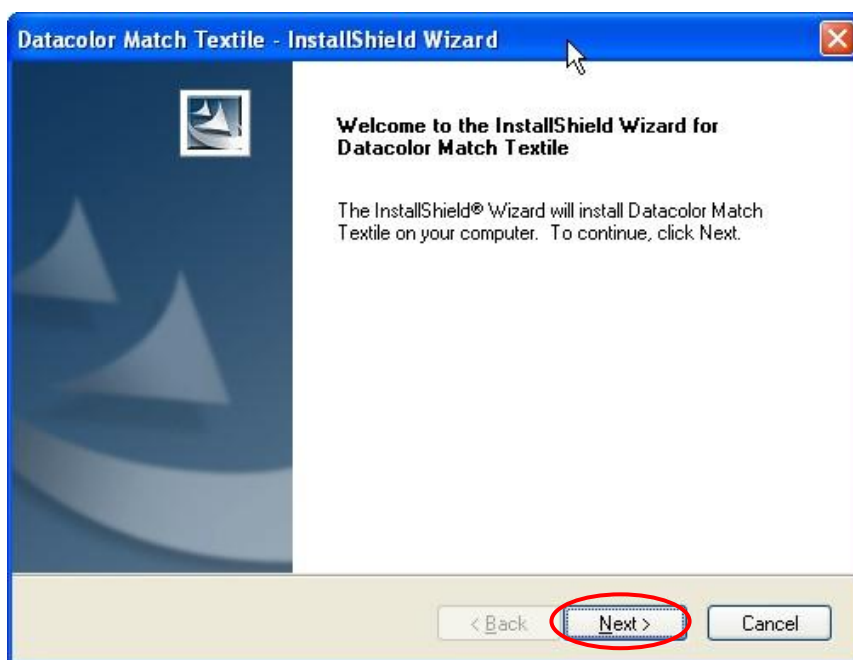
■ Uninstalling Fibrmix (if installed)



■ Uninstalling SmartSort (if installed)



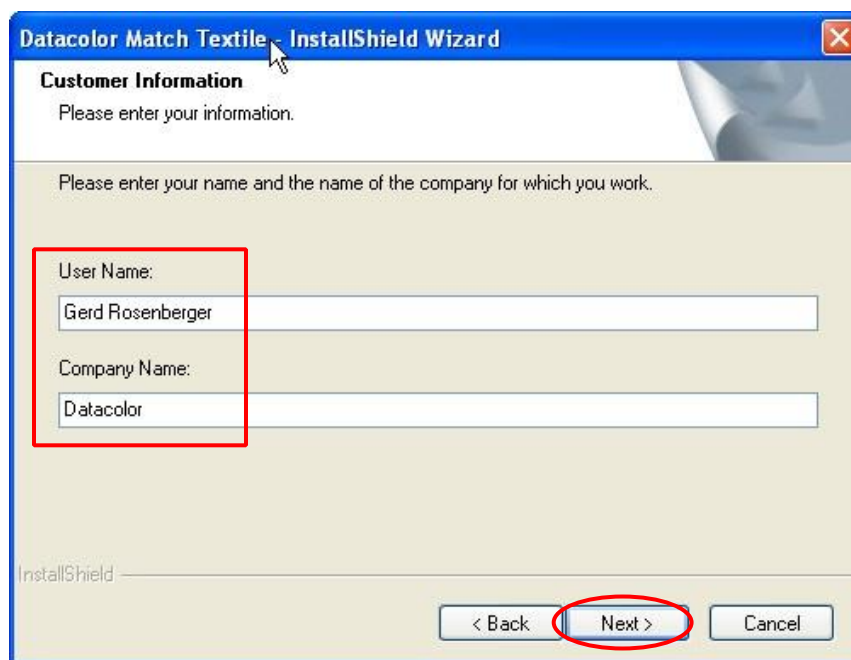
The setup continues with the Welcome dialog

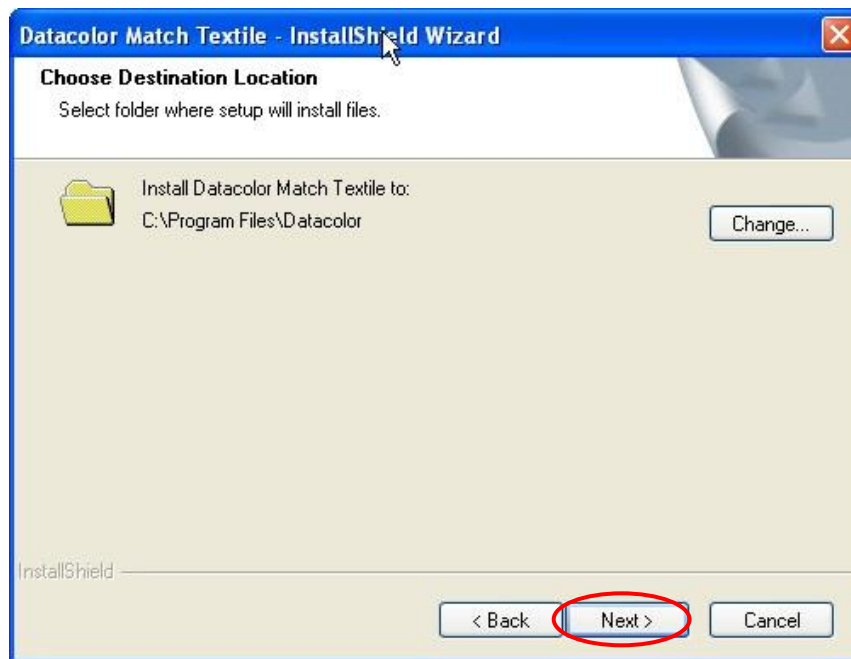


If you are installing Datacolor MATCH ^{TEXTILE} for the first time, click "**Next**" to access the Datacolor Software License Agreement dialog. You must select the acceptance radio button in order to install Datacolor MATCH ^{TEXTILE}. If you are upgrading an existing, licensed copy of Datacolor Match, this screen will not appear.



Select the acceptance radio button and click the “Next” button to proceed.





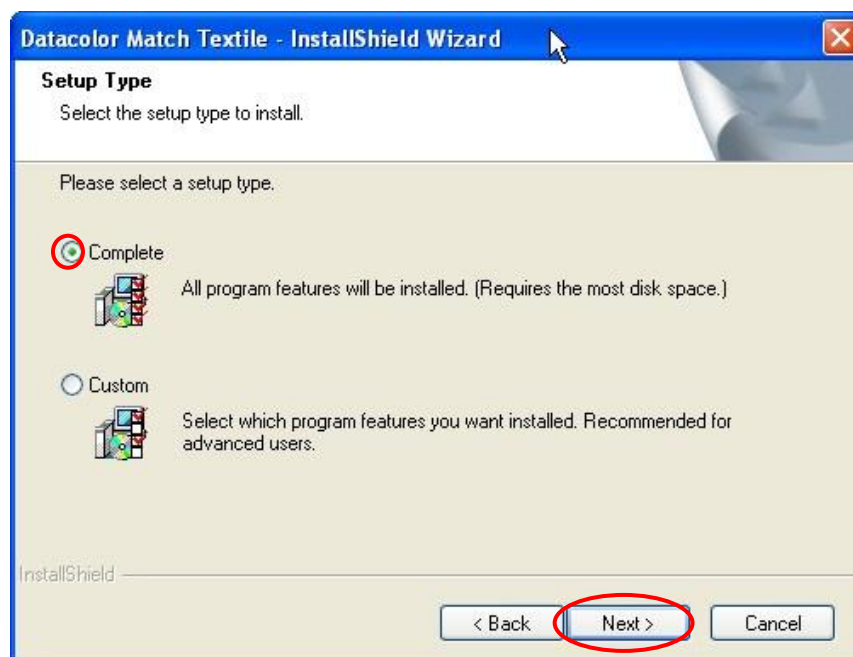
Click “**Next**” to select default installation folder. Normal default is C:\Program Files\Datacolor

Setup types

You will now see a screen offering you several different setup options.

Complete

(All modules are installed on your computer.)

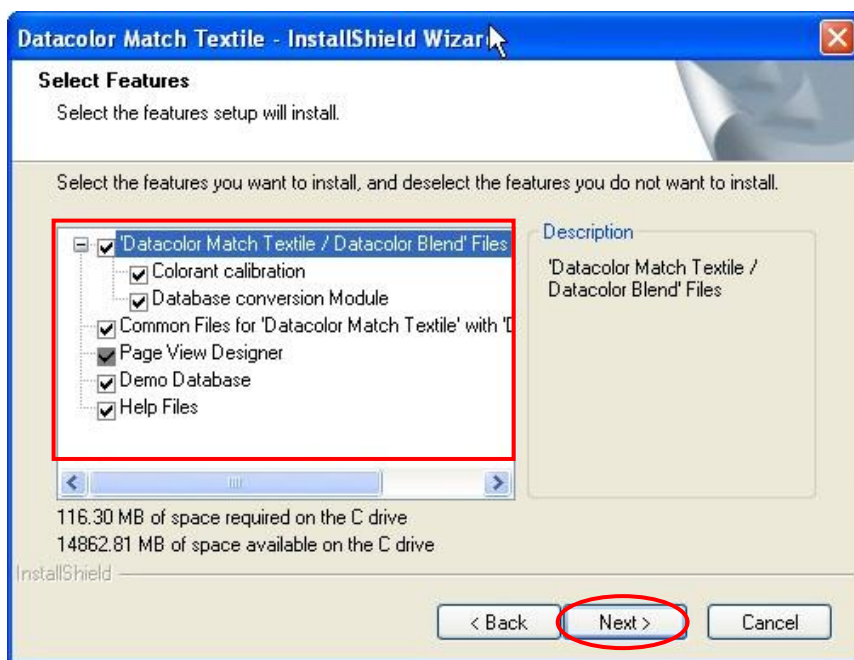


Select the Setup Type to install and click **“Next”**.

Custom:

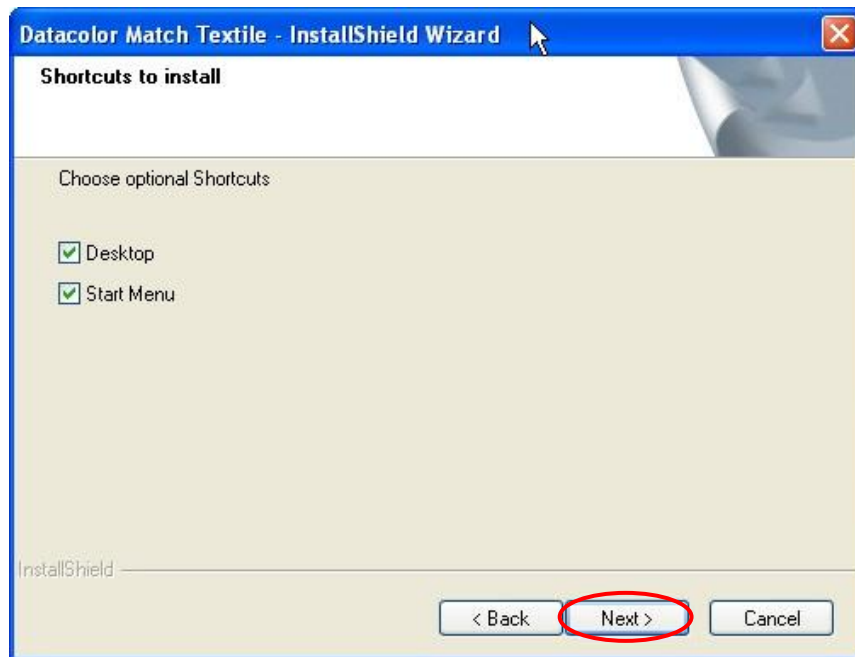
Please note, this is not recommend for typical user installations.

Custom setup allows you to install specific features instead of the entire Datacolor MATCH TEXTILE installation.

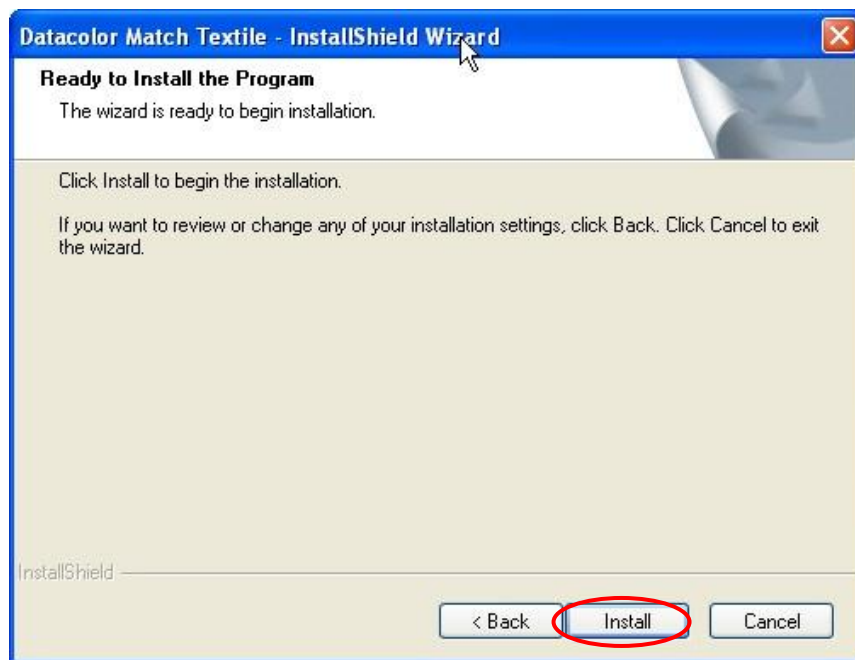


Click **“Next”** to select the shortcuts to install.

At default, the installation will put Datacolor Match icon on your desktop and a shortcut to start program menu.



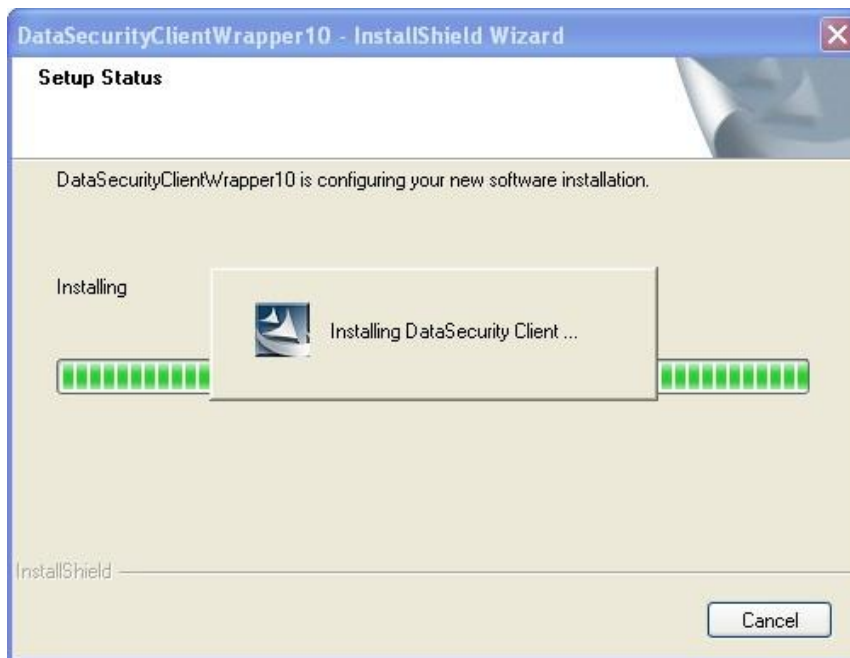
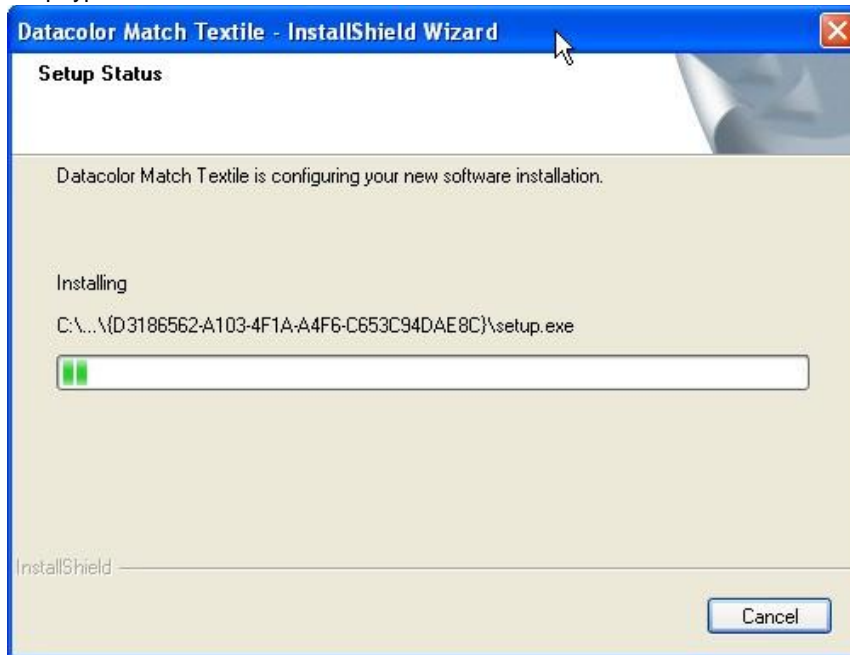
Click **"Next"** to continue the installation.



Click **"Install"** to transfer the data

Setup starts transferring the files

Setup types



The 'DataSecurityClient' is installed

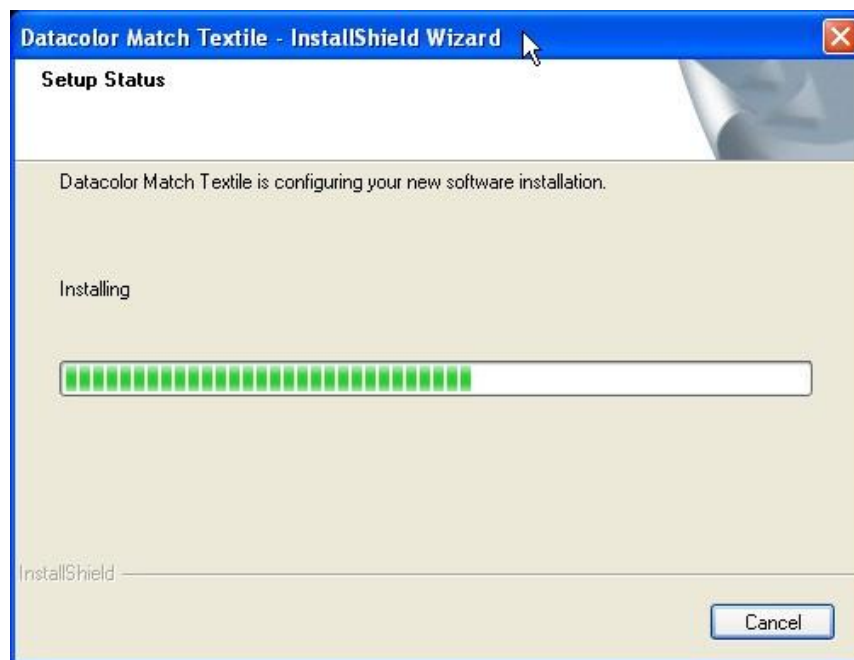
The Datacolor security software is installed now



followed by installing the Datacolor Envision components:



followed by installing the instrument drivers:

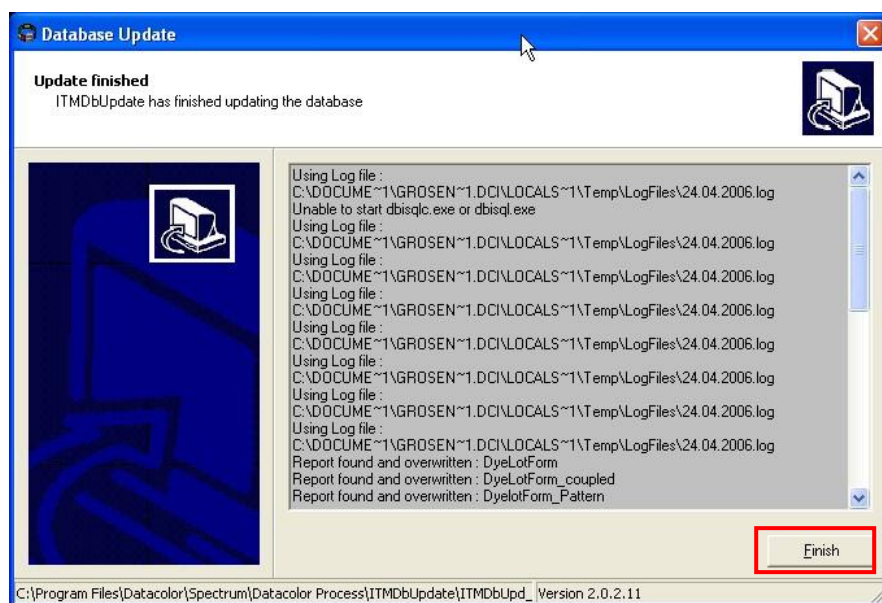


followed by the components for the LabProcess module.

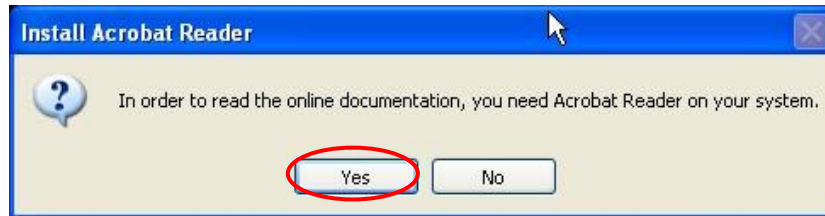


If this Windows Security Alert appears, click the 'Unblock' button.

followed by a database update

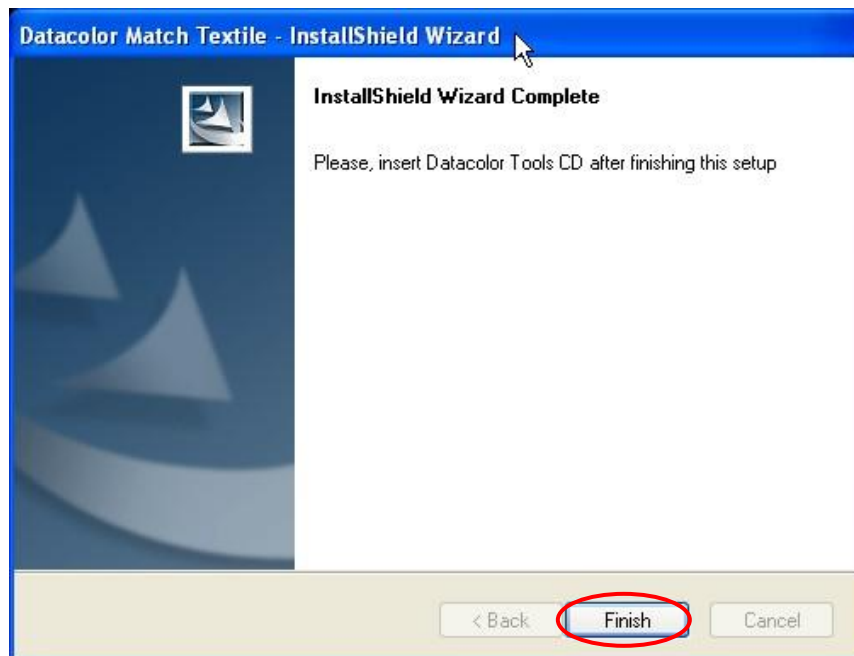


Followed by installing the Acrobat Reader



Click “Yes” to start the Acrobat reader installation and follow the instructions.

Finally, the “Complete” screen display.



Click “**Finish**”



Datacolor MATCH ^{TEXTILE} is now installed on your system!

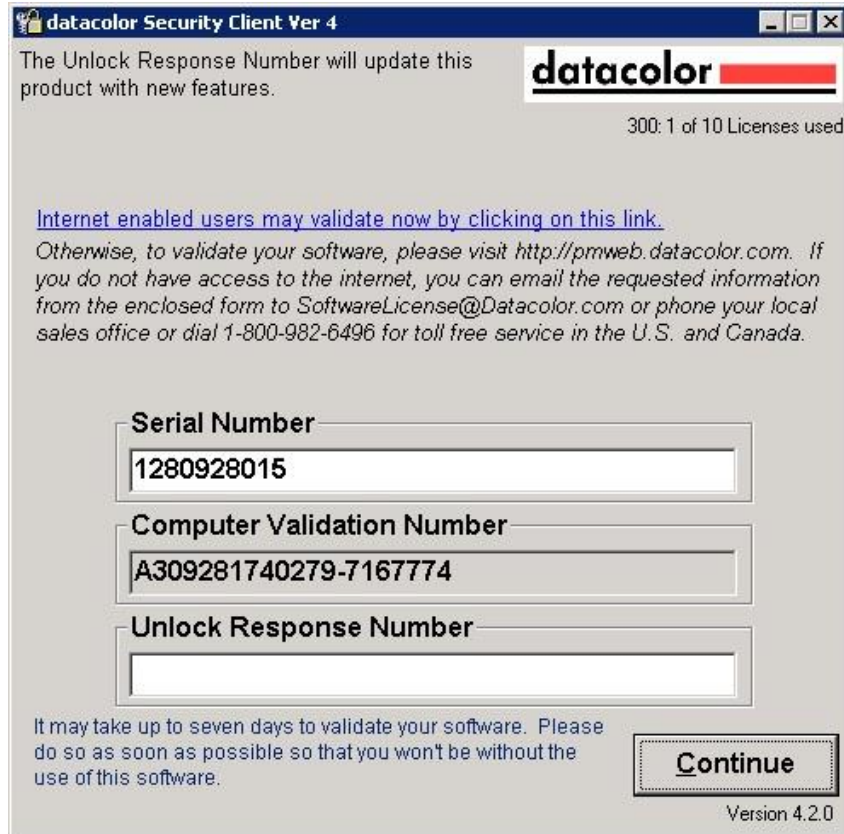
3 Validating Datacolor Software

Datacolor Spectrum Software is protected from unauthorized use by a software license. When the software is initially installed, the software license is in a demo period that will allow access for a fixed amount of time. In order to run the software after the demo period, the software license must be validated.

There are a number of ways to validate the software. In general you will need the following information:

1. You will need the **Serial Number** for your software. This number is supplied by Datacolor and is found on the USB case.
2. You will need a **Computer Validation Number**. This number is generated by the security software and is unique to your computer.

Validation information is accessed and input in the Datacolor Validation Window shown below:



The Unlock Response Number will update this product with new features.

datacolor

300: 1 of 10 Licenses used

[Internet enabled users may validate now by clicking on this link.](#)

Otherwise, to validate your software, please visit <http://pmweb.datacolor.com>. If you do not have access to the internet, you can email the requested information from the enclosed form to SoftwareLicense@Datacolor.com or phone your local sales office or dial 1-800-982-6496 for toll free service in the U.S. and Canada.

Serial Number

1280928015

Computer Validation Number

A309281740279-7167774

Unlock Response Number

It may take up to seven days to validate your software. Please do so as soon as possible so that you won't be without the use of this software.

Continue

Version 4.2.0

Datacolor Tools will display the Validation Window every time it starts during the demo period. The Validation Window can be accessed from "About" window in Datacolor Tools, select "License Info".

You can validate the software in 3 ways:

- Using a Web Connection – Link is on the Validation Window. Example is shown below
- E-Mail – Send Serial Number and Computer Validation Number for the product to SoftwareLicense@Datacolor.Com. You will receive an Unlock Response Number by e-mail that you will put into the Validation Window.
- Phone – In the US and Canada phone toll free 1-800-982-6496 or call you local sales office. You will need the Serial Number and the Computer Validation Number for the product. You will be given an Unlock Response Number that you will put into the Validation Window.

datacolor Security Client Ver 4

The Unlock Response Number will update this product with new features.

300: 1 of 10 Licenses used

[Internet enabled users may validate now by clicking on this link.](#)

Otherwise, to validate your software, please visit <http://pmweb.datacolor.com>. If you do not have access to the internet, you can email the requested information from the enclosed form to SoftwareLicense@Datacolor.com or phone your local sales office or dial 1-800-982-6496 for toll free service in the U.S. and Canada.

Serial Number
1280928015

Computer Validation Number
A309281740279-7167774

Unlock Response Number

It may take up to seven days to validate your software. Please do so as soon as possible so that you won't be without the use of this software.

Continue

Version 4.2.0

Type the Serial Number for the product into this field.

Tip: To avoid retyping this number later, highlight the number and then copy it to the clipboard using the Ctrl-C command.

Click the link to go to the Datacolor Software Validation Web Service.

Welcome to Datacolor's software validation web service. To validate your software, please enter the following information, then press continue.

First Name: John

Last Name: Doe

E-Mail: xyz@company.com

Serial Number: 1217185437

Continue

[Contact Webmaster](#)

Type a contact name in the First Name and Last Name fields.

Give your e-mail address.

Input the product Serial Number.

Tip: Paste it if you copied it earlier.

Click the Continue button.

The serial number you entered is for Datacolor Match Pigment Datacolor Match Pigment Plus.
Your Order Number is 123456.

Please verify that this purchase information is correct. If you have questions, click "Contact Webmaster".

Press Continue to validate your software.

[Continue](#) [Back](#) [Contact Webmaster](#)

This screen verifies that the serial number is valid and displays information about the product.

Click the Continue button to proceed.

ODBC Data Source Administrator

Please enter your Computer Validation Number as displayed in your Datacolor Software:

[Validate](#)

After entering the Computer Validation Number, click Validate to continue.

Enter the Computer Validation Number from the Validation Window.

Tip: You can copy this number on the clipboard from the Validation Window and paste it in here.

[Validate Another](#) [Close This Window](#) [Contact Webmaster](#)

Please enter your Computer Validation Number as displayed in your Datacolor Software:

[Validate](#)

Unlock Response Number:

Please enter the above Unlock Response Number into the Unlock Response Number section of your Datacolor Software validation screen.

An email has been sent to bbinder@datacolor.com with confirmation of this transaction. Please keep this for your records.

[Validate Another](#) [Close This Window](#) [Contact Webmaster](#)

This is your Unlock Response Number. Enter this number into the Validation Screen on your computer.

Tip: You can copy this number on the clipboard and paste it into the Validation Screen.

After you have entered the Unlock Response Number into the Validation Screen, your software is validated. You can validate additional programs by selecting the Validate Another option

