

Datacolor MATCH^{PIGMENT}

Installation Guide



Datacolor MATCH^{PIGMENT™} Stand-Alone Installation Guide

All efforts have been made to ensure the accuracy of the information presented in this format. However, should any errors be detected, Datacolor appreciates your efforts to notify us of these oversights.

Changes are periodically made to this information and are incorporated into forthcoming versions. Datacolor reserves the right to make improvements and/or changes in the product(s) and/or program(s) described in this material at any time.

© 2017 Datacolor. Datacolor, SPECTRUM and other Datacolor product trademarks are the property of Datacolor.

Microsoft and Windows are either registered trademarks of Microsoft Corporation in the United States and/or other countries.

To obtain information on local agents, contact either of the offices listed below, or visit our website at www.datacolor.com.

Support Questions?

If you need help with a Datacolor product, please contact one of our top-rated technical support teams located around the world for your convenience. You can find contact information below for the Datacolor office in your area.

Americas

+1.609.895.7465
+1.800.982.6496 (toll-free)
+1.609.895.7404 (fax)
NSASupport@datacolor.com

Europe

+41.44.835.3740
+41.44.835.3749 (fax)
EMASupport@datacolor.com

Asia Pacific

+852.2420.8606
+852.2420.8320 (fax)
ASPSupport@datacolor.com

Or Contact Your Local Representative

Datacolor has representatives in over 60 countries.
For support, visit <http://industrial.datacolor.com/support>.

Manufactured by Datacolor
5 Princess Road
Lawrenceville, NJ 08648
1.609.924.2189

Committed to Excellence. Dedicated to Quality. Certified to ISO 9001 in Manufacturing Centers Worldwide.

Contents

INTRODUCTION.....	4
SYSTEM REQUIREMENTS	5
TERMINAL SERVER CONFIGURATIONS.....	5
NEW INSTALLATION VS. UPGRADE	5
FIREWALL BLOCKING MESSAGES.....	6
ADOBE READER INSTALLATION.....	6
DATACOLOR MATCH^{PIGMENT} INSTALLATION.....	7
OVERVIEW.....	7
INSTALLATION PROCEDURE.....	8
SOFTWARE LICENSING PROCEDURE	19

Introduction

This document will provide information on how to install Datacolor Match Pigment on a new system or as an upgrade for an existing installation.

This document is for stand-alone computer systems.

The installation procedure includes the following steps:

- **Installation of Datacolor MATCH^{PIGMENT}**

The Datacolor Match Pigment program must be installed **after** installing Sybase.

- **Software License Validation**

Datacolor Match Pigment will run in a demo mode for 14 days. You will need to validate your software license during the demo period.

System Requirements

The system requirements shown below are the recommended configuration to ensure effective operation of the Datacolor MATCH^{PIGMENT} software in a stand-alone configuration.

Recommended hardware configuration

Component	Recommended	Notes
Processor	Dual Core processor	1
Memory RAM	8 GB	1
Free Hard Drive Capacity	500 GB	1
Video Resolution	True Color	2
Communication Devices	1 USB or RS-232 Serial 3 USB	3

Notes

1. Minimum system configurations may limit performance, data capacity and operation of some features. Faster processor, more memory and faster hard drives will significantly enhance performance.
2. Accurate on-screen color display requires monitor calibration and true-color video mode.
3. Datacolor spectrophotometers use either an RS-232 Serial or USB connectors. Datacolor Spyder requires a universal serial bus (USB) connection. Printer port requirements (Parallel or USB...) depend on the specific printer selected.

Please contact Datacolor for Terminal Server hardware and software requirements.

Terminal Server Configurations

For information on installing Datacolor Match Pigment on a terminal server, please see the Installation Instructions for Sybase Installation Guide.

New Installation vs. Upgrade

When preparing to upgrade your system, we strongly recommend the following:

- Restart the system before you begin the upgrade. ***This is especially important if you are running a previous release of Datacolor MATCH^{PIGMENT}.*** This is done to clear the memory of any modules that might interfere with the program upgrade.
- Backup your database. This can be accomplished through the MatchPigment menu by clicking Database, and then Backup Database. Follow the prompts.
- Store the data on the Datacolor TOOLS desktop before you begin the upgrade. *See also Datacolor TOOLS User Guide, Appendix for a list of all files that should be backed up prior to performing an upgrade.*

Firewall Blocking Messages

If you have enabled a firewall on the system, you may see a Windows Security dialog box on several occasions during the installation.

You must click **Unblock** to continue the installation.

Adobe Reader Installation

To view and print any Datacolor User Guide or PDF document, you must have installed *Adobe Reader*. To install Adobe Reader, click on the Install Adobe Reader button on the installation menu.

Viewing Datacolor MATCH^{PIGMENT} User's Guide

Once Adobe Reader is installed, you can view the Datacolor MATCH^{PIGMENT} User's Guide. It is located on the program USB in the DMP\Documentation directory, and is in a PDF file format (Datacolor MATCH^{PIGMENT} User Guide.PDF).

Datacolor MATCH^{PIGMENT} Installation

Overview

The Datacolor MATCH^{PIGMENT} product includes both Datacolor MATCH^{PIGMENT} and Datacolor TOOLS. These are two separate programs contained on separate USB's. *Please follow these instructions, to insure successful installation of Datacolor MATCH^{PIGMENT}.*

NOTE

If Sybase V12 is not installed on the system you cannot complete the installation of Datacolor MATCH^{PIGMENT}.

Before You Begin

- Microsoft Windows® should be properly installed on your computer.
- You must have Windows Administrator rights to install this software.
- **Restart the system before installing the software.** This removes any memory-resident modules that may interfere with the installation, and is especially important if you have been running a previous version of Datacolor MATCH^{PIGMENT}.
- Install Sybase V12 database management software.
- Close all other programs that are running.
- Have all program installation readily available.
- Install Datacolor MATCH^{PIGMENT} before installing Datacolor TOOLS.

Installation Procedure

To install Datacolor MATCH^{PIGMENT}:

1. Place the Datacolor MATCHPIGMENT USB into the port.
2. Select the Menu.exe

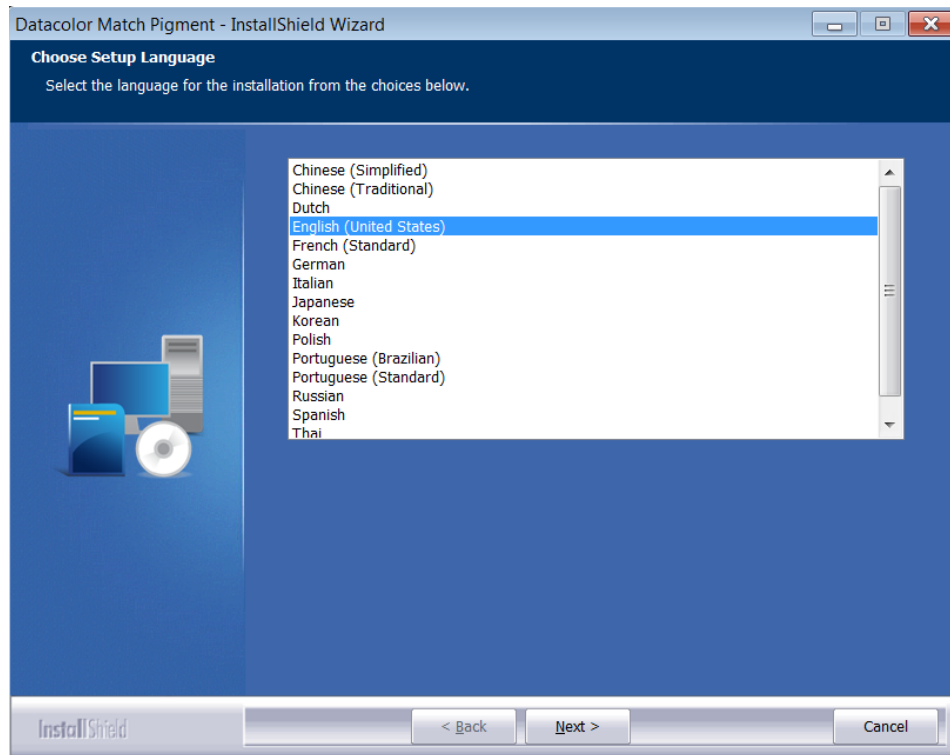
The Main Installation menu should appear automatically:



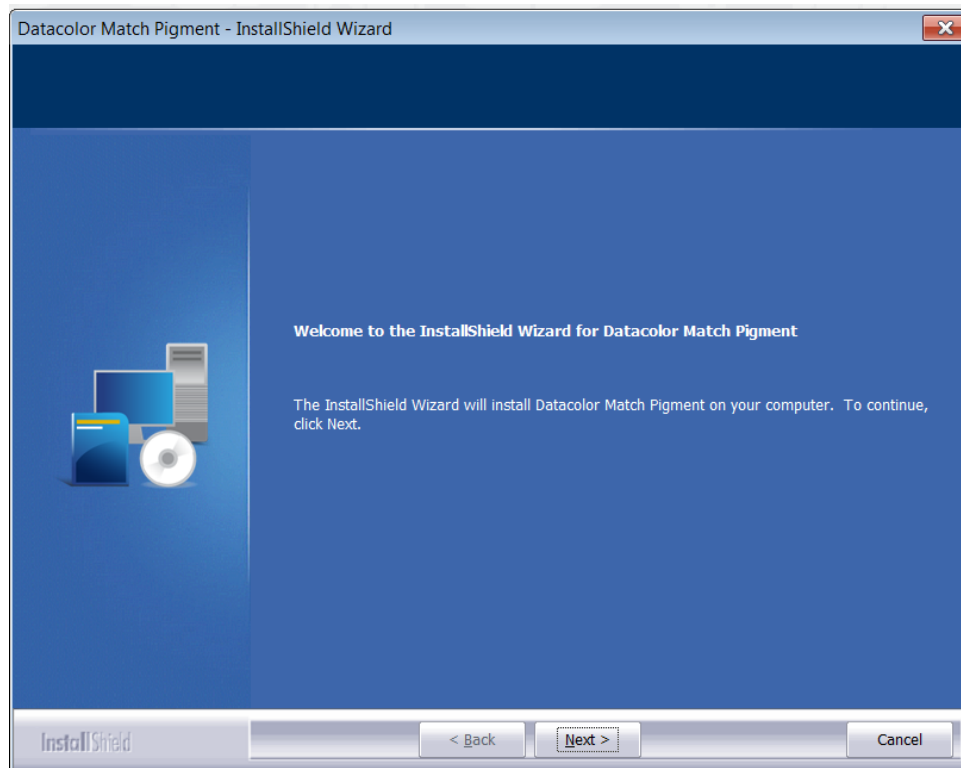
3. Click on **Install Datacolor MATCH^{PIGMENT}**.
4. From the MATCH PIGMENT Installation Menu select **Install Datacolor MATCH^{PIGMENT}**



5. The Datacolor MATCH^{PIGMENT} installation will prompt you to select a language:

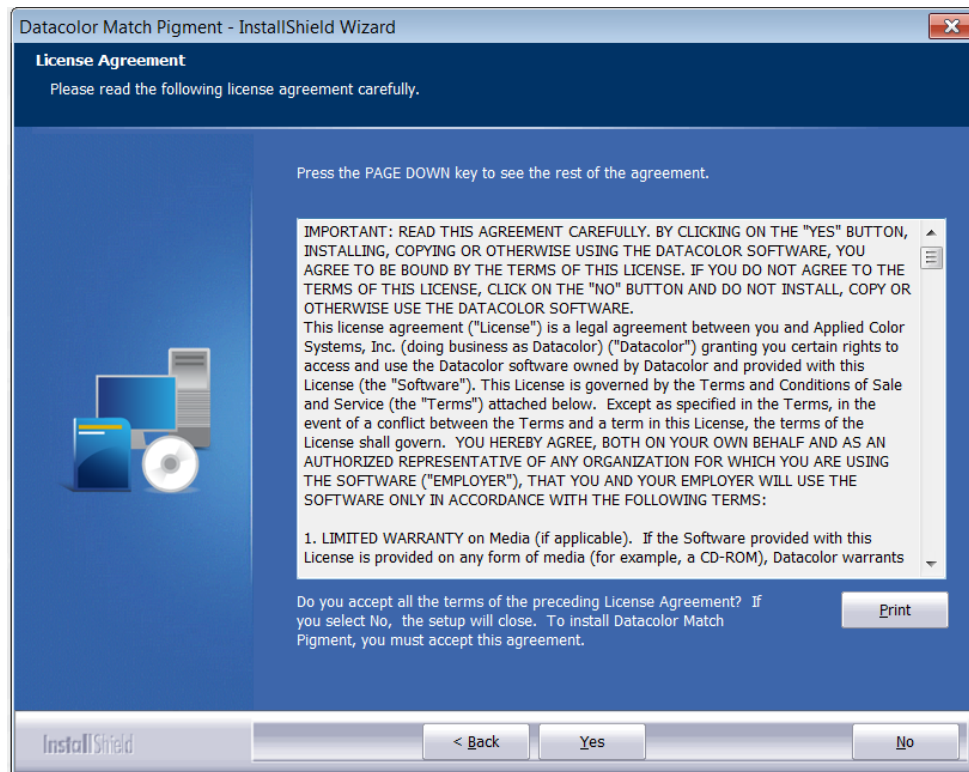


6. Select the appropriate language, and click **Next**. The Installation will begin and then the Installation Wizard will display:



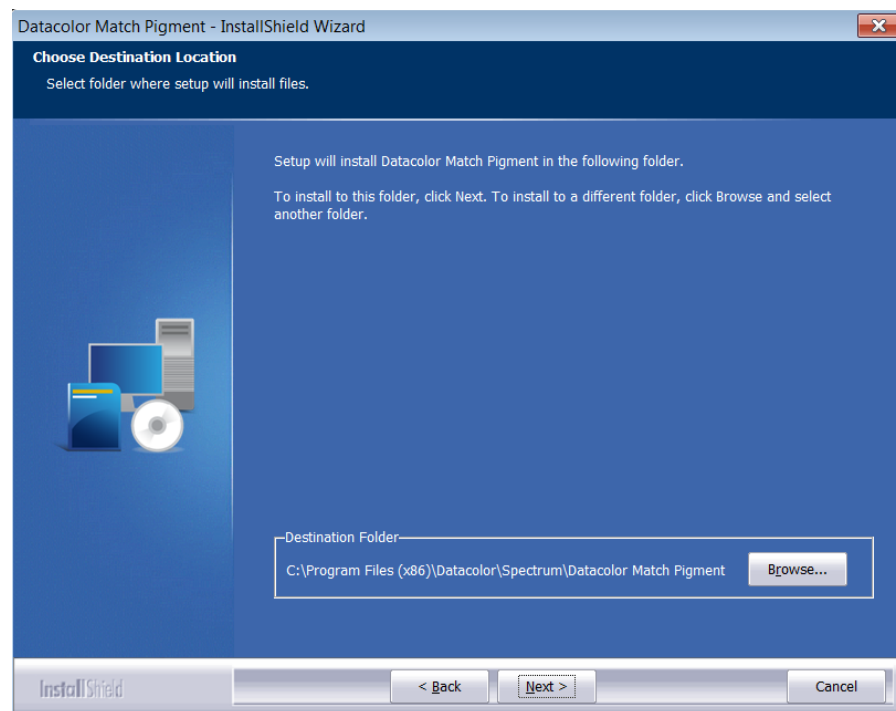
Click **Next** to continue.

7. A software license agreement is displayed:



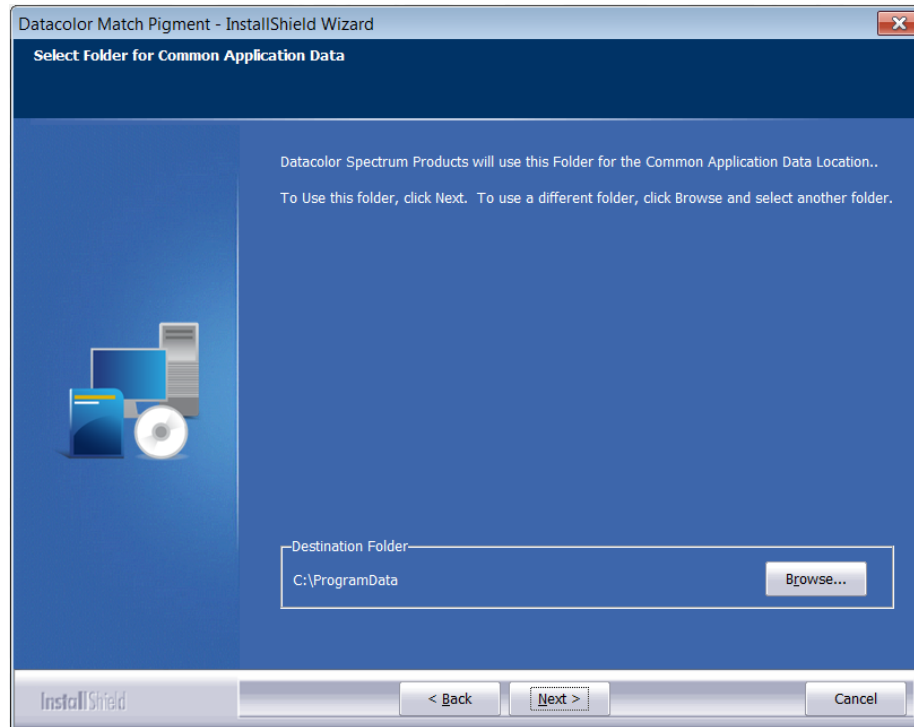
8. To continue with the installation, you must accept the agreement by clicking **Yes**.

9. The program confirms the folder location for Datacolor MATCH^{PIGMENT}:



- To select a different location for programs, click **Browse**.
- To accept the default, click **Next**.

10. The installation confirms the location for the **Common Applications Data** location. The locations vary depending on whether you are using Microsoft Windows XP, or Microsoft Vista:



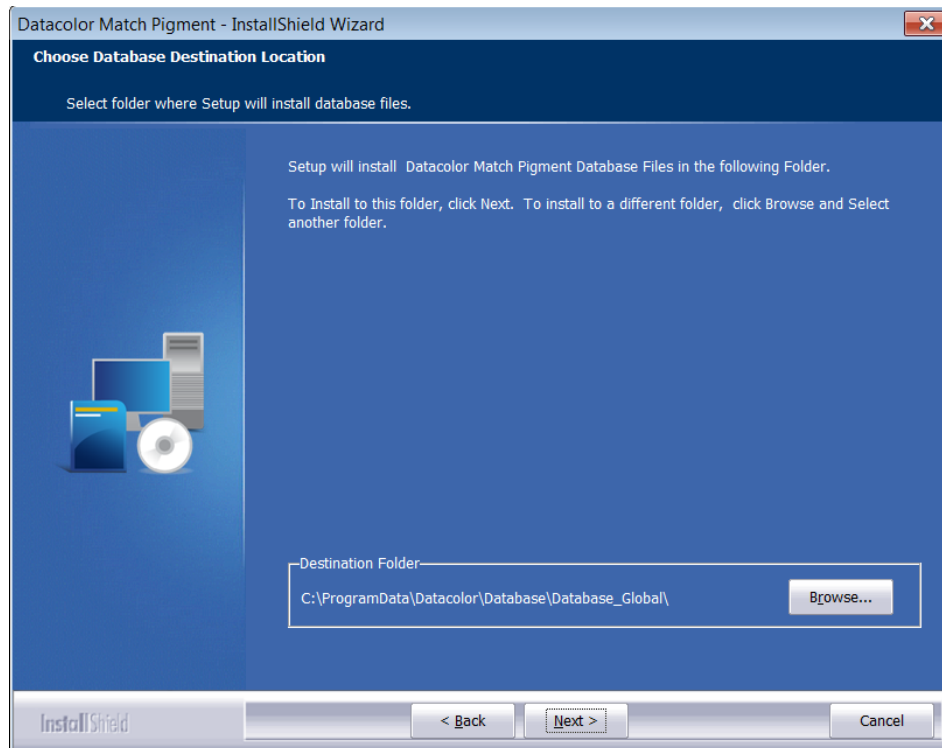
The common applications location is: **C:\ProgramData**.

You should accept the default locations unless otherwise directed by Datacolor applications.

Click **Next** to accept the default locations.

Select Database Location

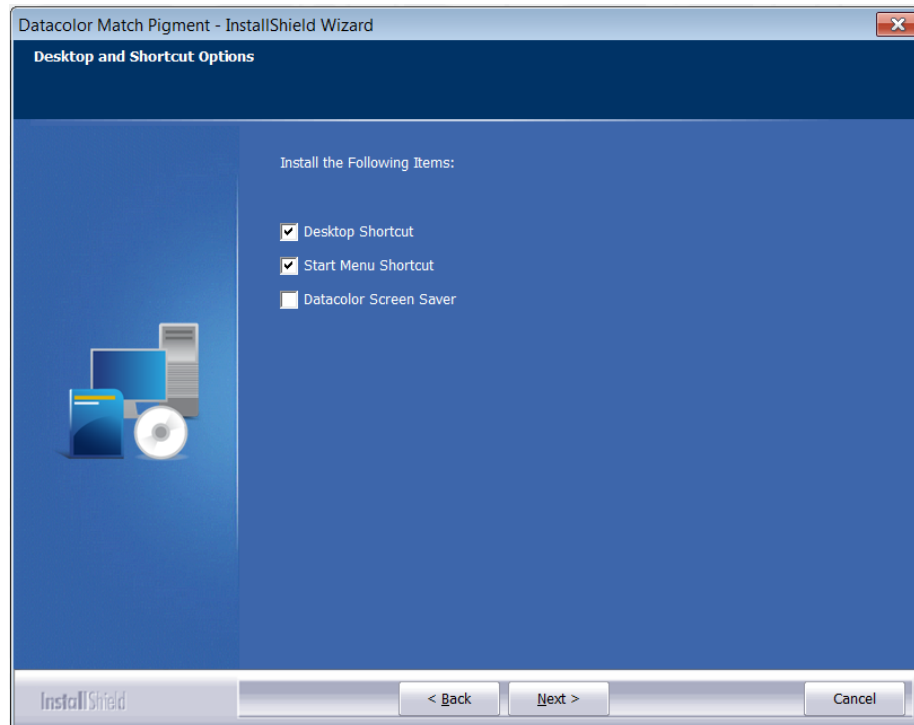
The installation confirms the folder location for the Datacolor MATCH ^{PIGMENT} **database** files.



- To select a different folder for the database, click **Browse**.

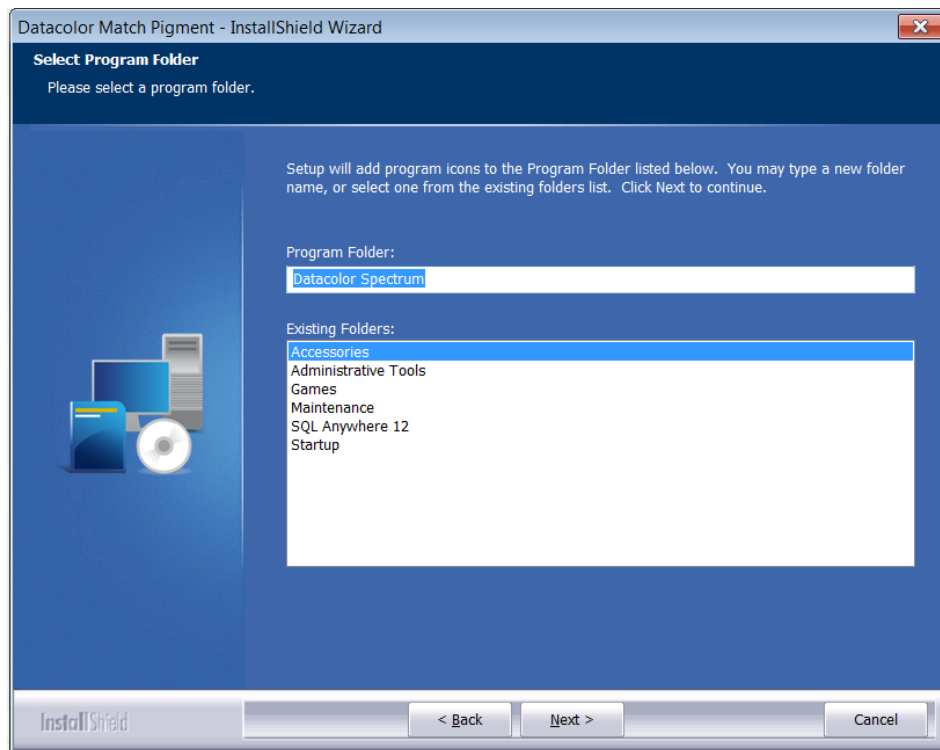
The database location is: C:\ProgramData\Datacolor\Database\Database_Global

11. Desktop and Shortcut Options.



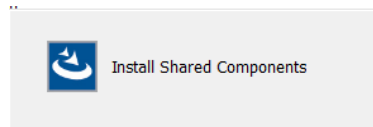
Click **Next** to continue.

12. Program Folder Selection

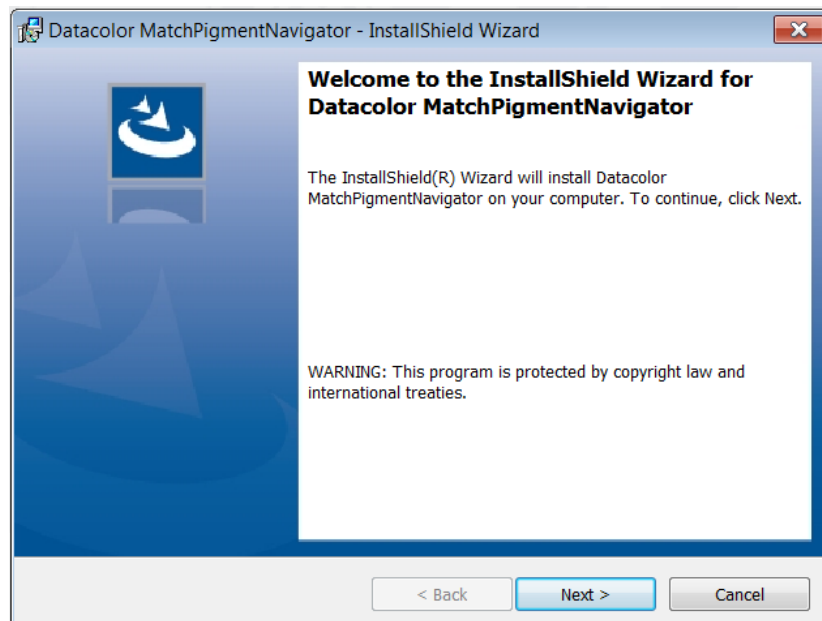


Click **Next** to continue.

13. Shared Components will now install.

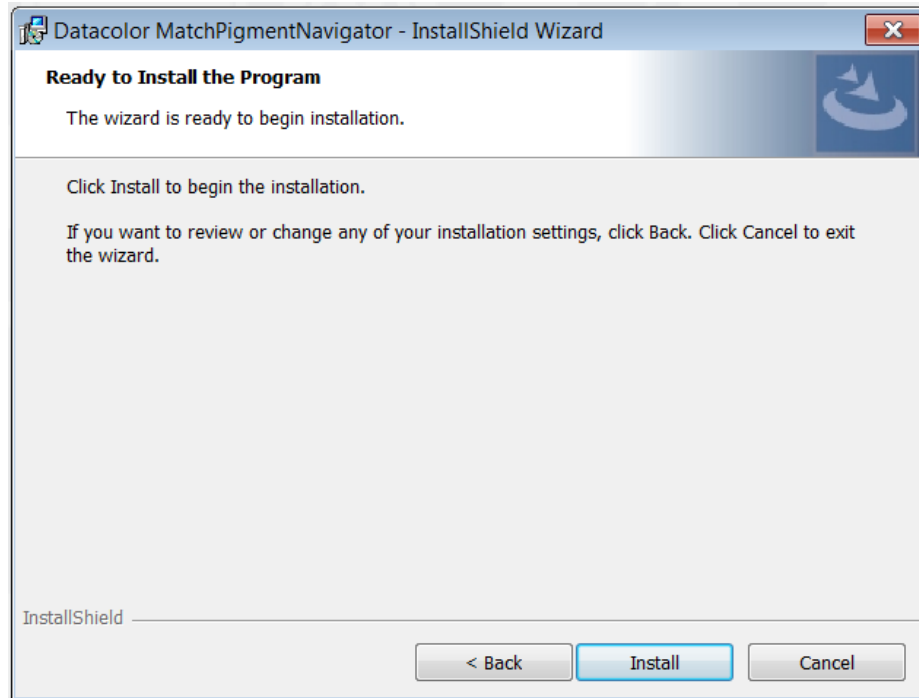


The Datacolor MatchPigmentNavigator window will launch. This component contains elements that are shared with the Datacolor TOOLS application. This screen will display:



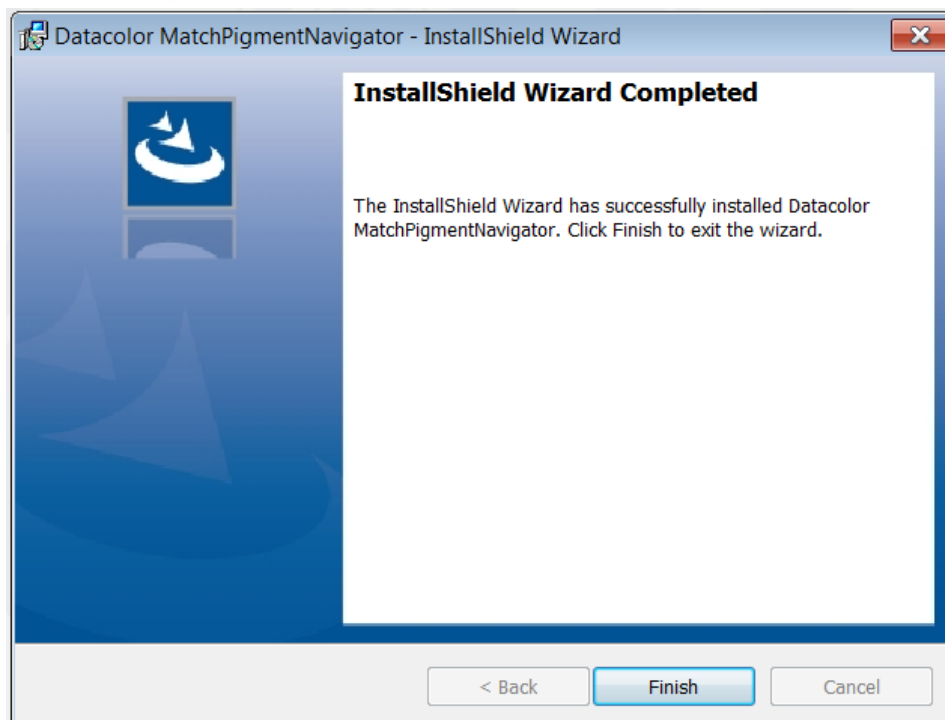
Click **Next** to continue.

14. The MatchPigmentNavigator wizard will continue.



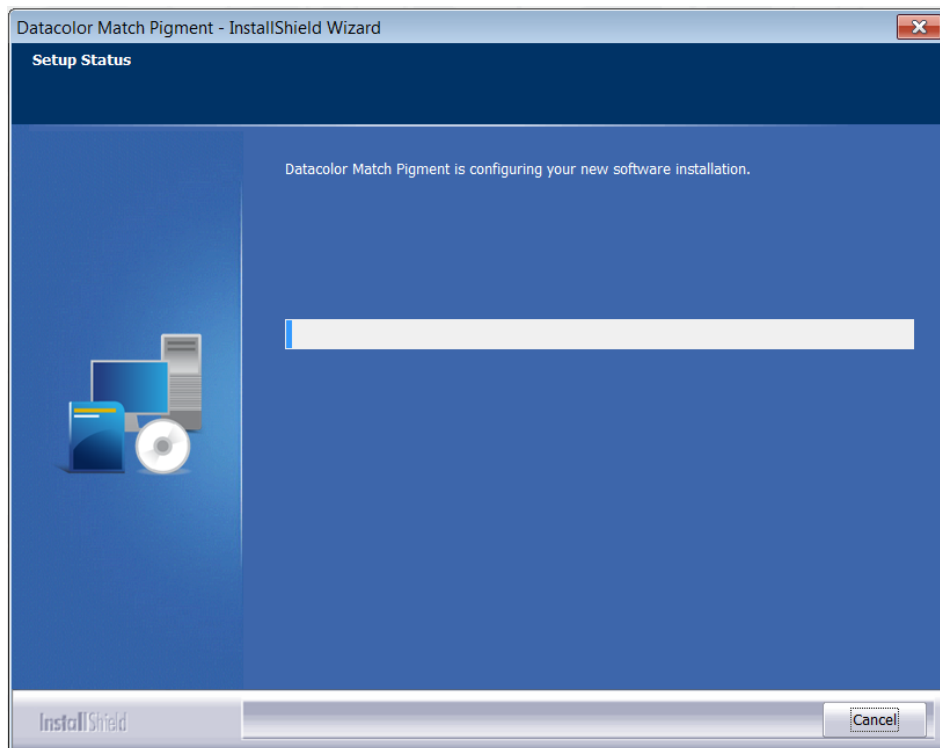
Click **Install** to continue.

15. A progress bar will appear on the window and when it fills, the MatchPigmentNavigator installation will complete.

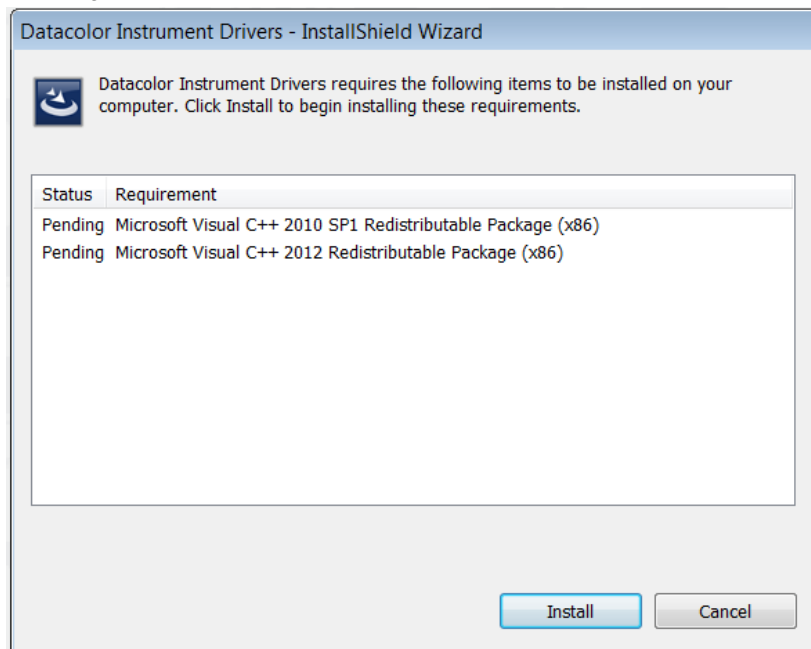


Click **Finish** to continue.

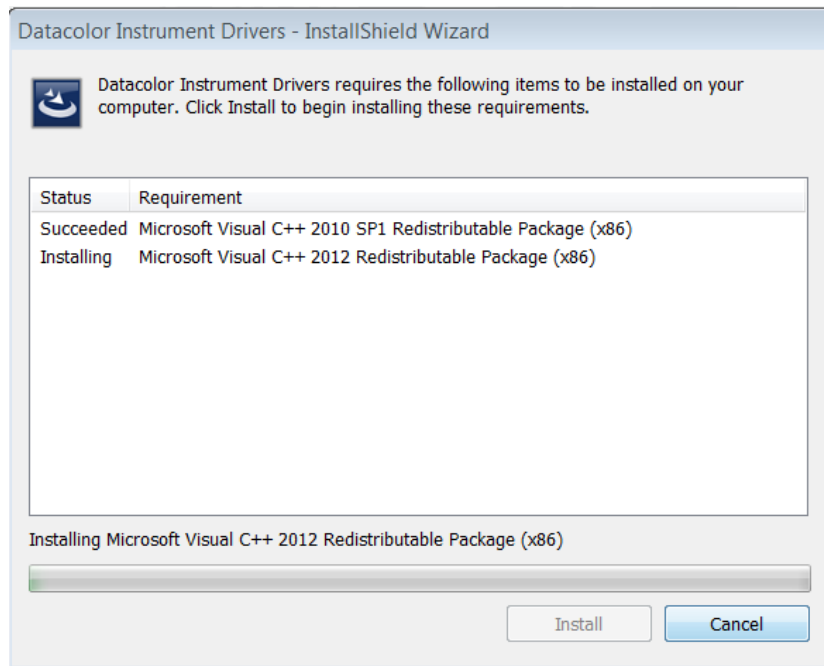
16. The installation will now begin:



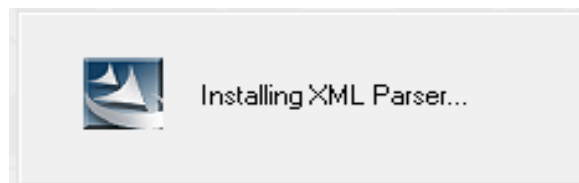
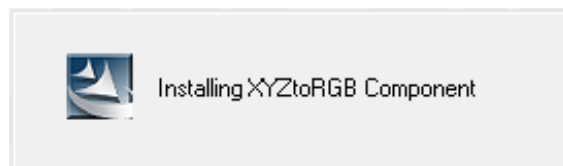
17. Installing the Instrument Drivers:



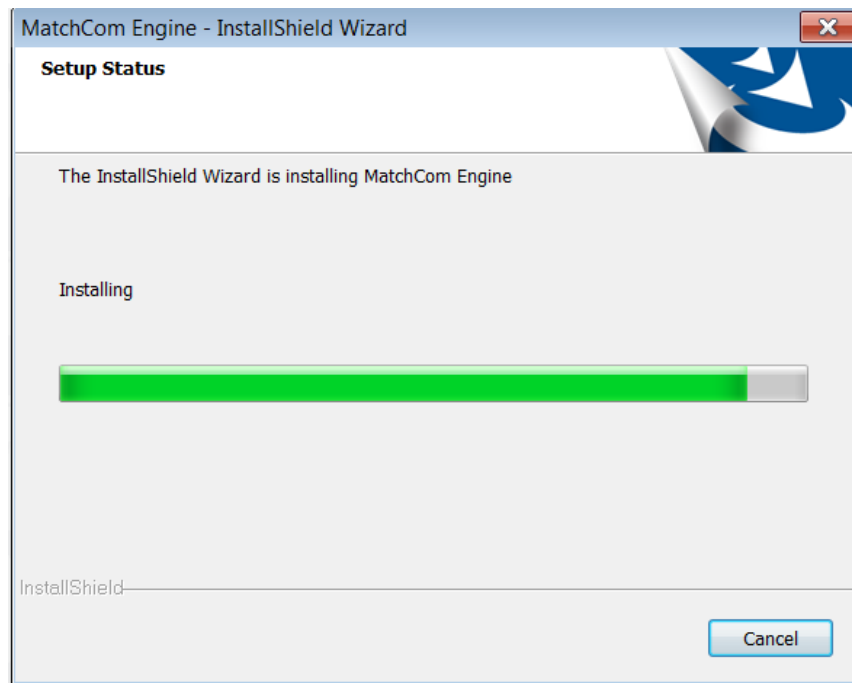
Click install to continue.



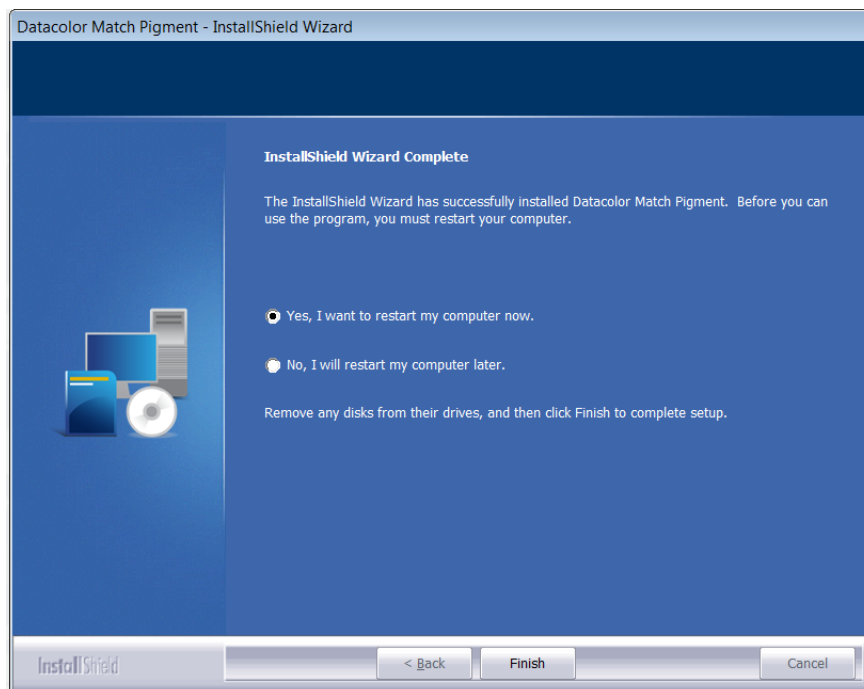
18. Installing additional components:



19. The MatchCOM matching engine is installed:

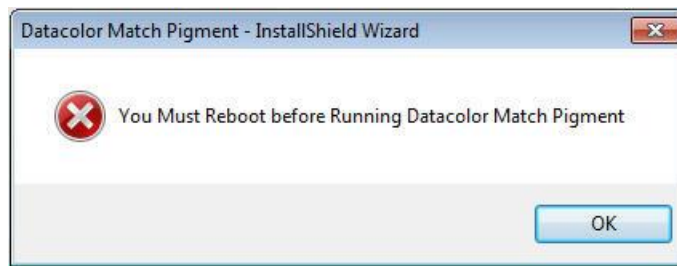


20. After the installation is completed, you will see this screen:.



21. You will be prompted to reboot your computer.

You must reboot before you can start the Datacolor Match Pigment program. If you select No, you will receive the following message:



Click OK to reboot your computer.

Software Licensing Procedure

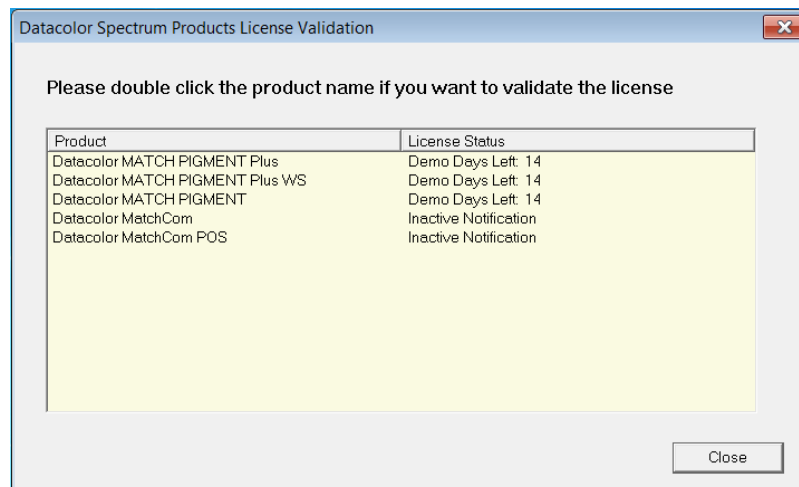
You must license the software to use it. When the program is installed, you are given a 14-day demonstration period during which you can run the programs without a valid license. We strongly recommend that you validate all software licenses immediately after installing the software. You should license Datacolor MATCH^{PIGMENT} first.

The procedure detailed below is used to license the software via a direct web connection.

Licensing Datacolor MATCH^{PIGMENT}

1. Launch Datacolor MATCH^{PIGMENT}.

The License Validation screen is displayed:



2. Double-click on the first product to be licensed.

NOTES

You can license any product that appears on this window.

During the demo period, you can click **Close** to bypass the licensing procedure. However, once the demo period has expired, you cannot proceed without validating the license(s)..

3. Double-click on the button for the Datacolor MATCH^{PIGMENT} product to be validated.

The Datacolor Security Client window will open.

datacolor Security Client Ver 4

The demonstration period of this application has expired. You must purchase a license or validate your current license in order to continue using the application.

443: 0 of 1 Licenses used

[Internet enabled users may validate now by clicking on this link.](#)

Otherwise, to validate your software, please visit <http://pmweb.datacolor.com>. If you do not have access to the internet, you can email the requested information from the enclosed form to SoftwareLicense@Datacolor.com or phone your local sales office or dial 1-800-982-6496 for toll free service in the U.S. and Canada.

Serial Number

Computer Validation Number

A452254061196-76581372

Unlock Response Number

It may take up to seven days to validate your software. Please do so as soon as possible so that you won't be without the use of this software.

Continue

Version 4.3.0

NOTES

This screen remains open during the validation process. You will later be asked for the *Computer Validation Number*. We suggest that you return to this window, to copy and paste the *Computer Validation Number*. This will eliminate keyboarding errors.

Select **Continue**, while in the demonstration period, to bypass the validation procedure and open the program.

4. In the *Serial Number* field, enter the serial number for the product you have selected. This is found on the CD case.
5. Click on the link to the web connection:
The window below is displayed:

Welcome to Datacolor's software validation web service. To validate your software, please enter the following information, then press continue.

First Name: John

Last Name: Doe

E-Mail: xyz@company.com

Serial Number: 1217186437

Continue

[Contact Webmaster](#)

This window provides an Internet connection to the Datacolor web validation service, and remains open during the validation procedure.

- In the *First Name*, *Last Name* and *Email* fields, provide your contact information.
- In the *Serial Number* field, enter the product serial number again. It must match the number you entered in the previous screen.

6. Click the **Continue** button.
The window below is displayed:

The serial number you entered is for Datacolor Match Pigment Datacolor Match Pigment Plus.

Your Order Number is 123456.

Please verify that this purchase information is correct. If you have questions, click "Contact Webmaster".

Press Continue to validate your software.

Continue

Back

[Contact Webmaster](#)

This window verifies that the serial number is valid, and displays information about the product.

7. Click **Continue** to proceed.
The program will prompt you for the computer validation number:

8. Enter the **computer validation number** from the Datacolor Security Client window, and click **Validate** to continue.

A number will be displayed in the *Unlock Response Number* field.

NOTE

You can copy the *Computer Validation* number from the *Datacolor Security Client* screen, using the standard Windows **Copy** command. You can paste it here, using the **Paste** command.

9. Return to the *Datacolor Security Client* screen, and enter the **Unlock Response Number**:

NOTE

You can copy the *Unlock Response Number* from the web validation screen using the standard Windows **Copy** command, and paste it into this screen using the Windows **Paste** command.

10. Click **Continue**. The Security Client window closes.

The web validation screen remains displayed. The validation process is completed, and the Datacolor MATCH^{PIGMENT} product you selected is now licensed.

To validate a different Datacolor product license:

- Click **Close This Window**. The Datacolor license validation window is displayed.
- Choose the next product license to be validated, and repeat the procedure.

11. To end the licensing procedure, click **Close this Window**.

NOTE

You will receive an email confirmation containing the *Serial Number* and *Unlock Response Number* for each license you validate. We recommend that you make copies of these for reference purposes.