

Datacolor TRACK V1.4.x Installation Guide

Datacolor MATCH EXPRESS Stand-Alone Installation Guide
(September, 2008)

All efforts have been made to ensure the accuracy of the information presented in this format. However, should any errors be detected, Datacolor appreciates your efforts to notify us of these oversights.

Changes are periodically made to this information and are incorporated into forthcoming versions. Datacolor reserves the right to make improvements and/or changes in the product(s) and/or program(s) described in this material at any time.

© 2008 Datacolor. Datacolor, SPECTRUM and other Datacolor product trademarks are the property of Datacolor.

Microsoft and Windows are either registered trademarks of Microsoft Corporation in the United States and/or other countries.

To obtain information on local agents, contact either of the offices listed below, or visit our website at www.datacolor.com.

Support Questions?

If you need help with a Datacolor product, please contact one of our top-rated technical support teams located around the world for your convenience. You can find contact information below for the Datacolor office in your area.

Americas

+1.609.895.7465
+1.800.982.6496 (toll-free)
+1.609.895.7404 (fax)
NSASupport@datacolor.com

Europe

+41.44.835.3740
+41.44.835.3749 (fax)
EMASupport@datacolor.com

Asia Pacific

+852.2420.8606
+852.2420.8320 (fax)
ASPSupport@datacolor.com

Or Contact Your Local Representative

Datacolor has representatives in over 60 countries.
For a complete list, visit www.datacolor.com/locations.

Manufactured by Datacolor
5 Princess Road
Lawrenceville, NJ 08648
1.609.924.2189

Committed to Excellence. Dedicated to Quality. Certified to ISO 9001 in Manufacturing Centers Worldwide.

Table of Content

| | | |
|----------|---|-----------|
| 1 | INSTALLATION OVERVIEW | 4 |
| 1.1 | SYSTEM REQUIREMENTS | 4 |
| 1.2 | DATACOLOR TRACK INSTALLATION WIZARD (NEW INSTALLATION) | 5 |
| 2 | INSTALLING SYBASE (PERSONAL SERVER, CLIENT AND TOOLS):..... | 12 |
| 3 | DATACOLOR TRACK NETWORK CONFIGURATION | 15 |
| 3.1 | TO INSTALL THE SYBASE SERVER SOFTWARE, DO THE FOLLOWING:..... | 15 |
| 4 | CREATING A SYBASE SERVICE..... | 27 |
| 4.1 | HOW TO CHANGE AN EXISTING SYBASE 7 SERVICE TO RUN WITH SYBASE 9..... | 35 |
| 4.2 | ODBC DATA SOURCE ADMINISTRATOR | 36 |
| 4.2.1 | <i>Client ODBC configuration with multi segmented network architectures</i> | <i>39</i> |
| 5 | INSTALLATION UNDER MICROSOFT VISTA | 40 |
| 6 | VALIDATING DATACOLOR SOFTWARE | 42 |
| 7 | STARTING DATACOLOR TRACK 1.4 THE 1ST TIME | 45 |
| 7.1 | SYBASE PERSONAL ENGINE: | 45 |
| 7.2 | SYBASE SERVER: | 46 |
| 7.3 | MS SQL SERVER: | 47 |
| 7.4 | CONFIGURATION OF COMMUNICATION SETTINGS..... | 48 |
| 8 | DATACOLOR TRACK SERVICE INSTALLATION..... | 50 |
| 8.1 | STARTING THE DATACOLOR TRACK SERVICE | 53 |
| 8.2 | STOPPING THE DATACOLOR TRACK SERVICE | 53 |

1 Installation Overview

To properly work with a complete installation of Datacolor TRACK, its database service and Datacolor TRACK Job Scan Service certain installation and configuration steps must be obeyed. These steps are for a network system:

1. Installation of Datacolor TRACK V1.4.3
2. Installation of Sybase Server
3. Copy of Datacolor Track's database to the Sybase Server
4. Enable the Sybase Service (configuration of Datacolor TRACK specific settings, such as the mail settings)
5. define the ODBC settings for the server application
6. Installation of Datacolor TRACK Service V1.4.3
7. start Track's Job Scan service (start that service locally if not in server mode)

1.1 System Requirements

The system requirements shown below are the minimum configuration to ensure effective operation of the standard Datacolor TRACK software. Configurations below stated requirements may work, but are not supported by Datacolor.

| Component | Description/Comments |
|--------------------------------|---|
| Microprocessor | Pentium IV 1.9 GHz processor required. |
| RAM | 512 MB minimum 1 GB is recommended for Win XP, and for generally increased performance. |
| Hard Disk | Minimum of 2 GB free disk space. |
| CD ROM drive | Required. |
| Video Monitor/ Graphics | 16 MB, high-resolution graphics card. Color patch displays require 1024 x 768 (small font) or better. |
| Printer | Windows supported printers: Ink Jet, Laser Printers. Dot matrix printers are not supported. |
| Mouse | Required. |
| Microsoft Windows | Windows 2000 Professional, WIN XP Pro. |
| Network | Networks that are 100% windows compatible. Datacolor TRACK operates on networks compatible with the Microsoft Windows operating systems by using the application layer of the network operating system. |

****Microsoft and Microsoft Windows are trademarks of Microsoft Corporation.***

1.2 Datacolor TRACK Installation Wizard (New installation)

It is strictly recommended that you exit all Windows programs before running the Setup program.

Important, Before You Begin! *You must have Administrator Rights to install this software.*

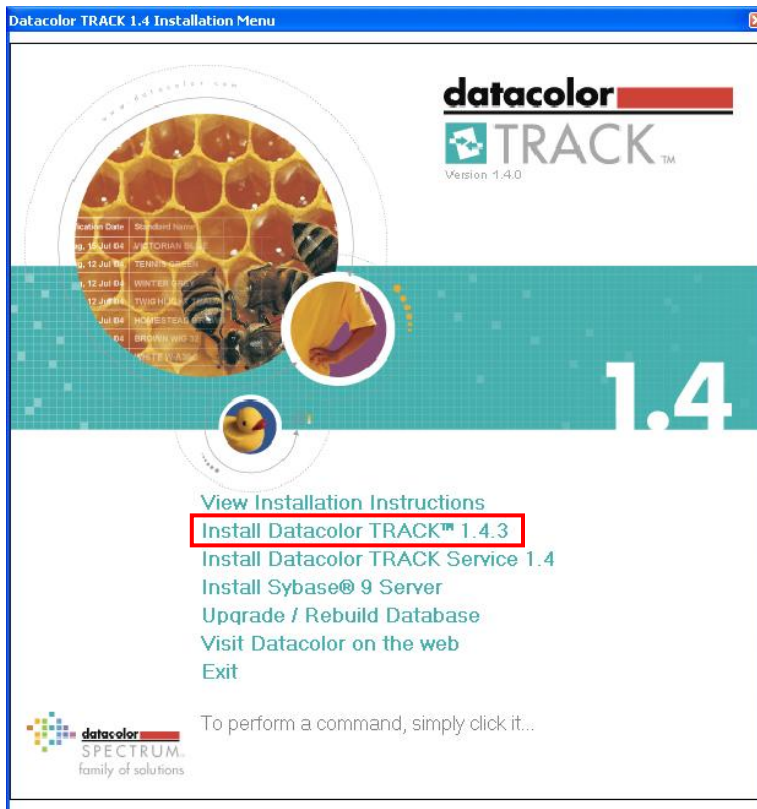
To install your software, do the following:

1. Start Windows.
2. Place the product CD into the CD drive.
3. The main installation menu should appear automatically.

If you do not see the menu window, do the following:

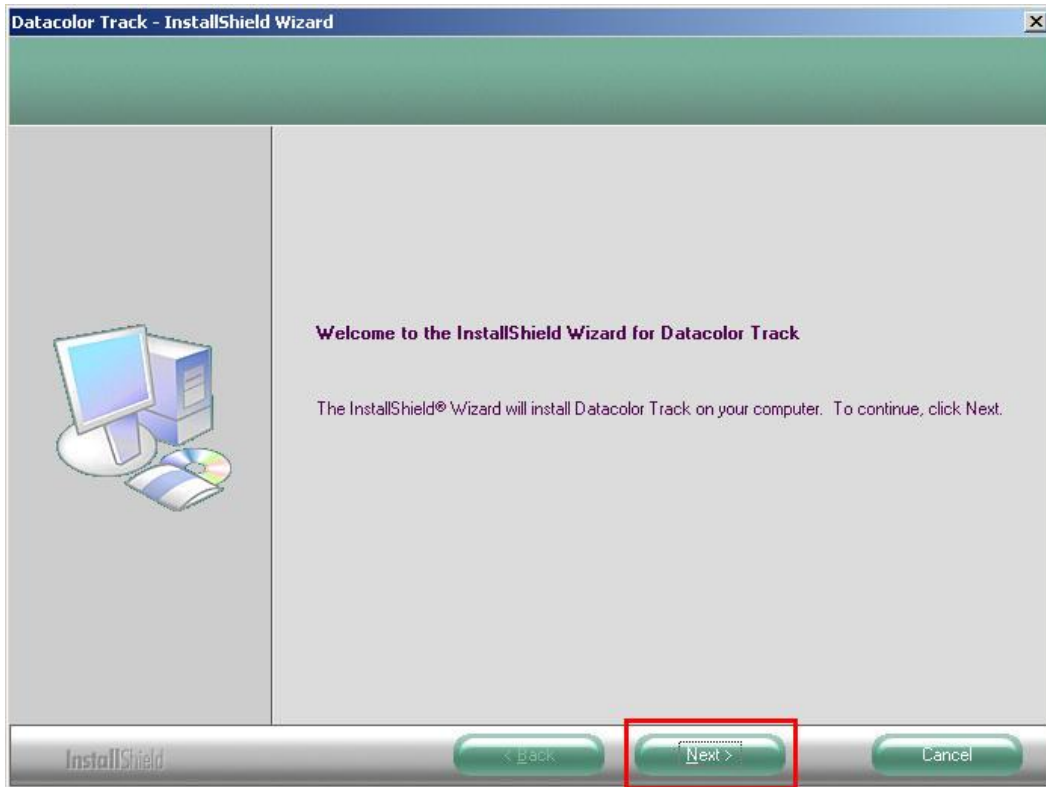
Click the **Start** button From the start menu, choose **Run...**

in the Run dialog box, type **D: MENU** and click OK. (If your CD Drive is a letter other than D, use that letter in the dialog box.)



Next, click on **Install Datacolor TRACK V1.4.3**

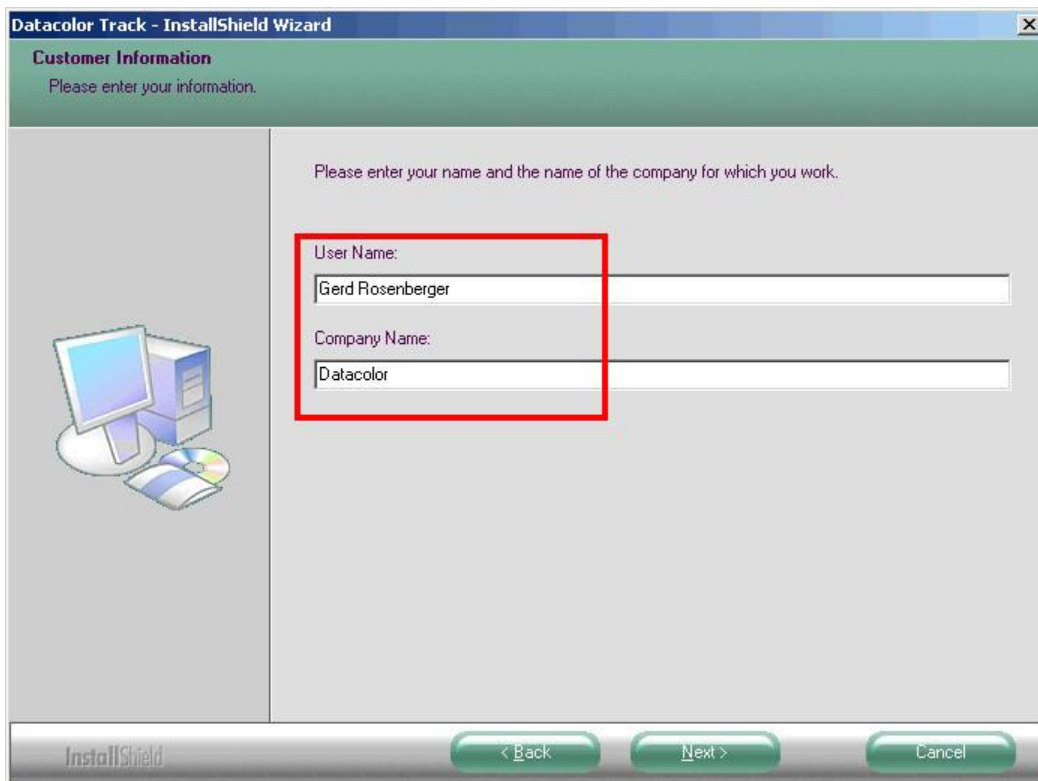
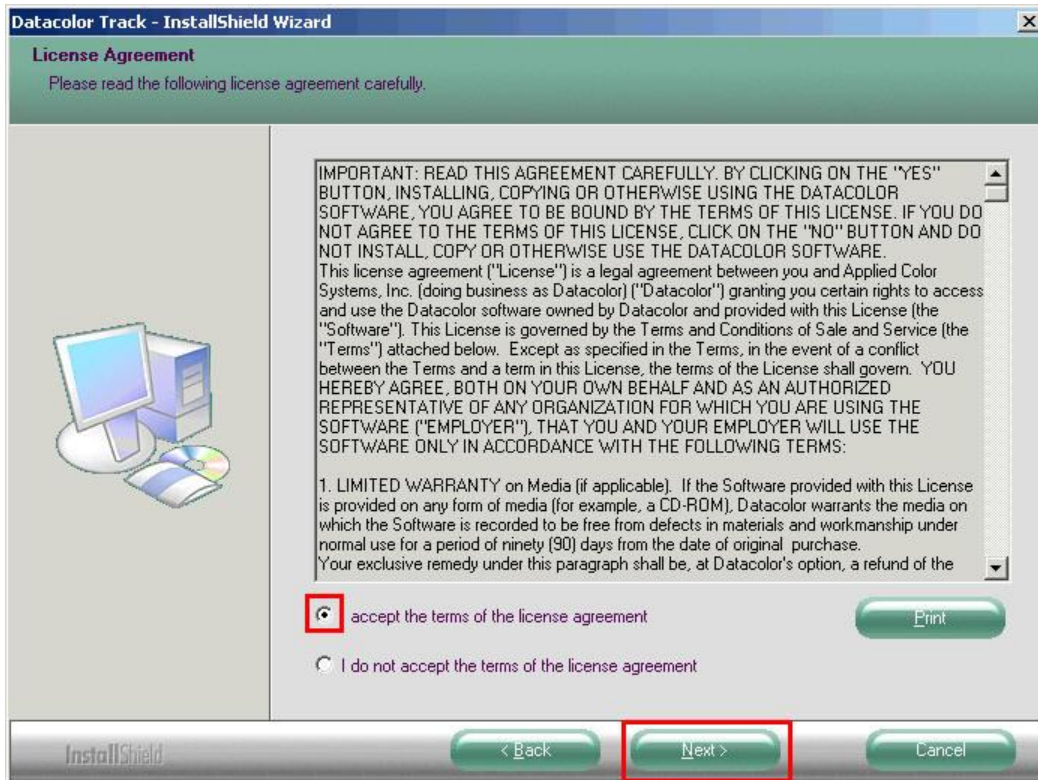
The InstallShield Wizard is prepared. Press the Next button.



NOTE

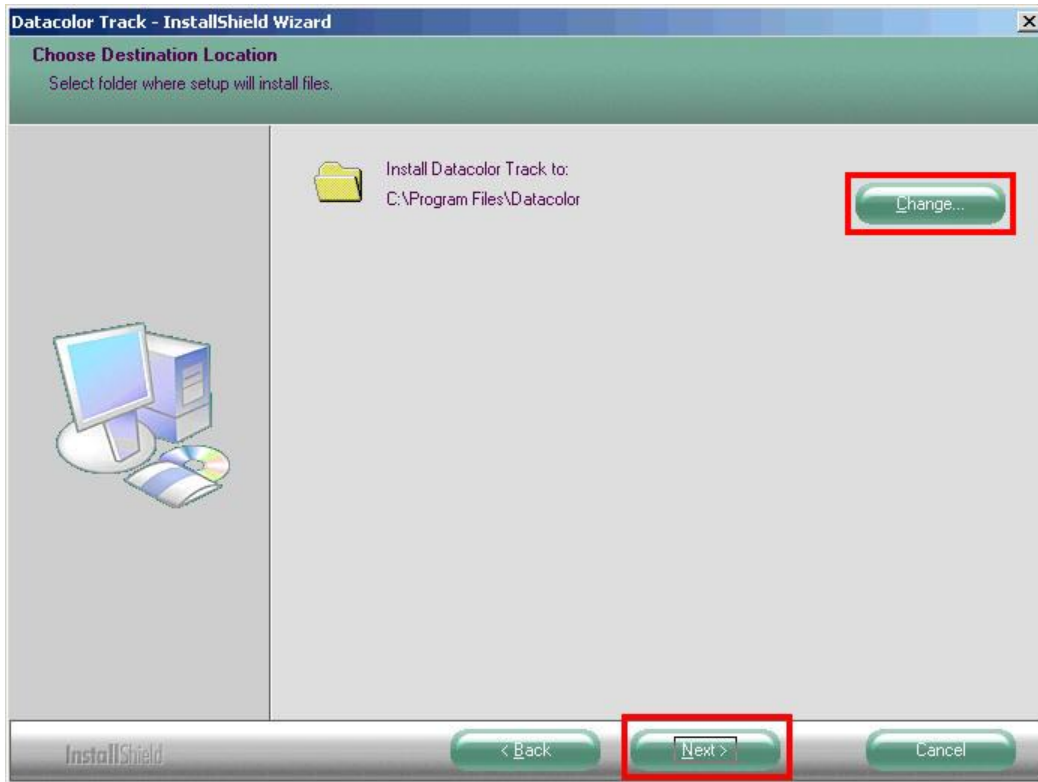
If you are installing on Windows 2000 or Windows XP Professional you need **Administrator Rights** to install the software.

The Datacolor TRACK installation starts with the license agreement for the Datacolor TRACK installation. Please read it carefully, select the acceptance radio button and proceed.

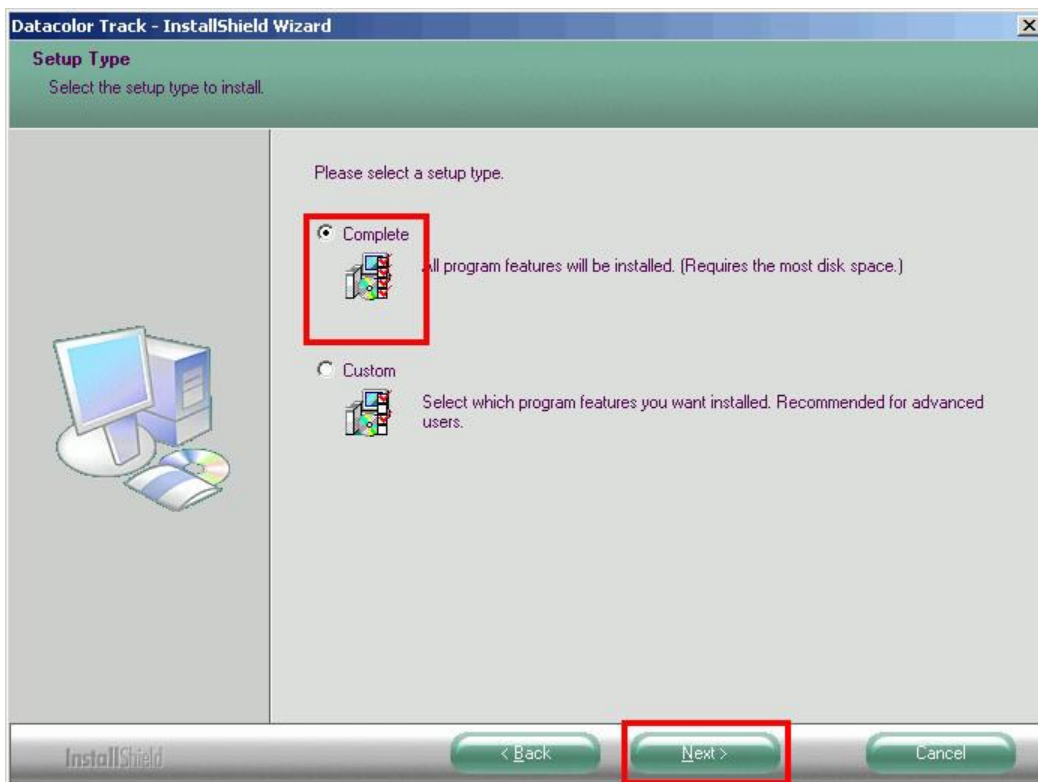


Type your name and Company and click “**Next**”.

The next dialog asks for the folder to install Datacolor TRACK to.



Accept by pressing “**Next**” or select a new folder with “**Change**” where Setup is about to install files to.

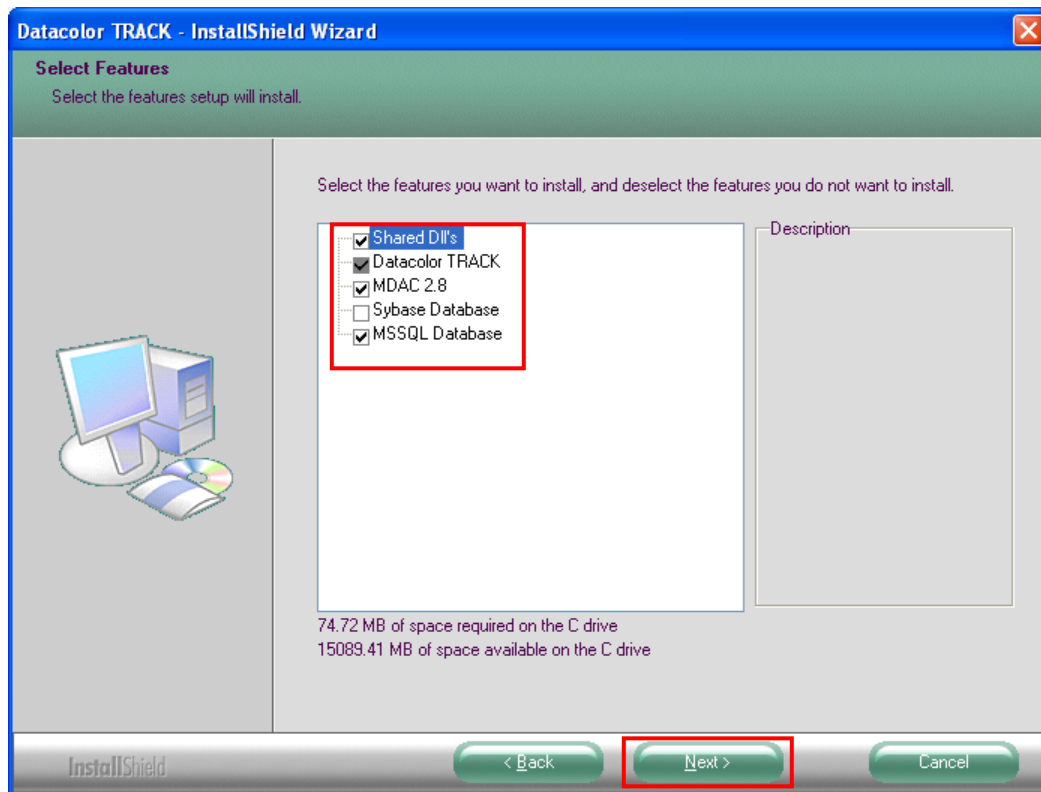


Select the Setup Type to install.

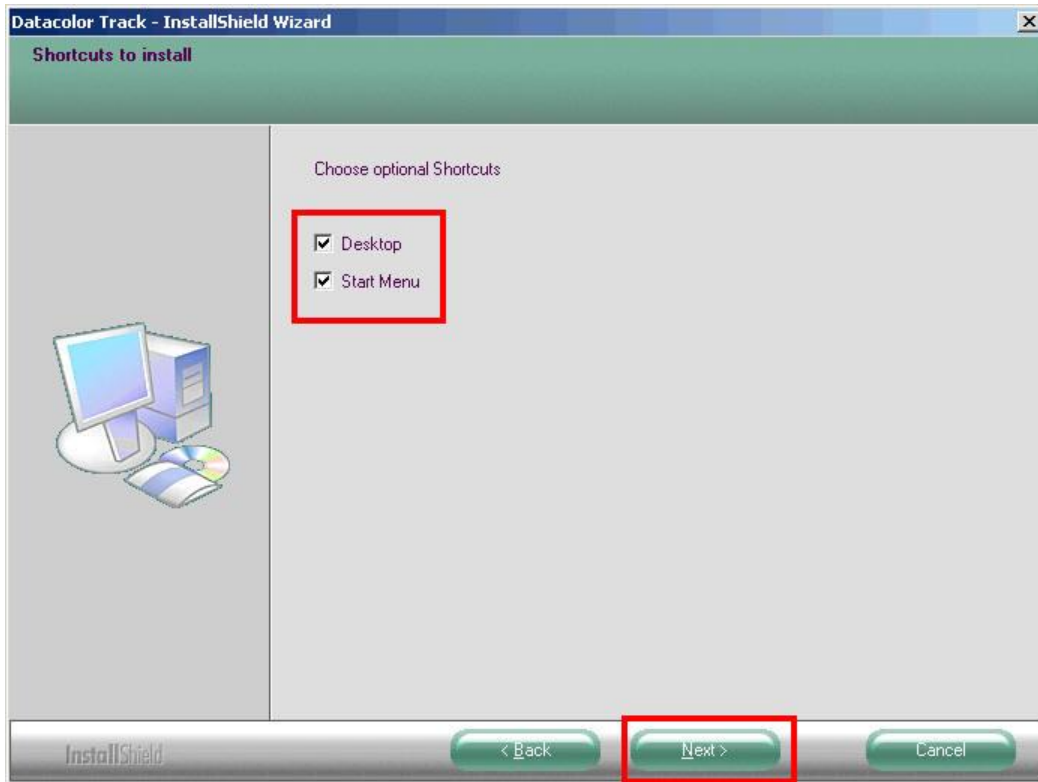
Complete: All programs components are installed including SQL Anywhere 9.02

Custom: Same as Typical – program components are user selectable

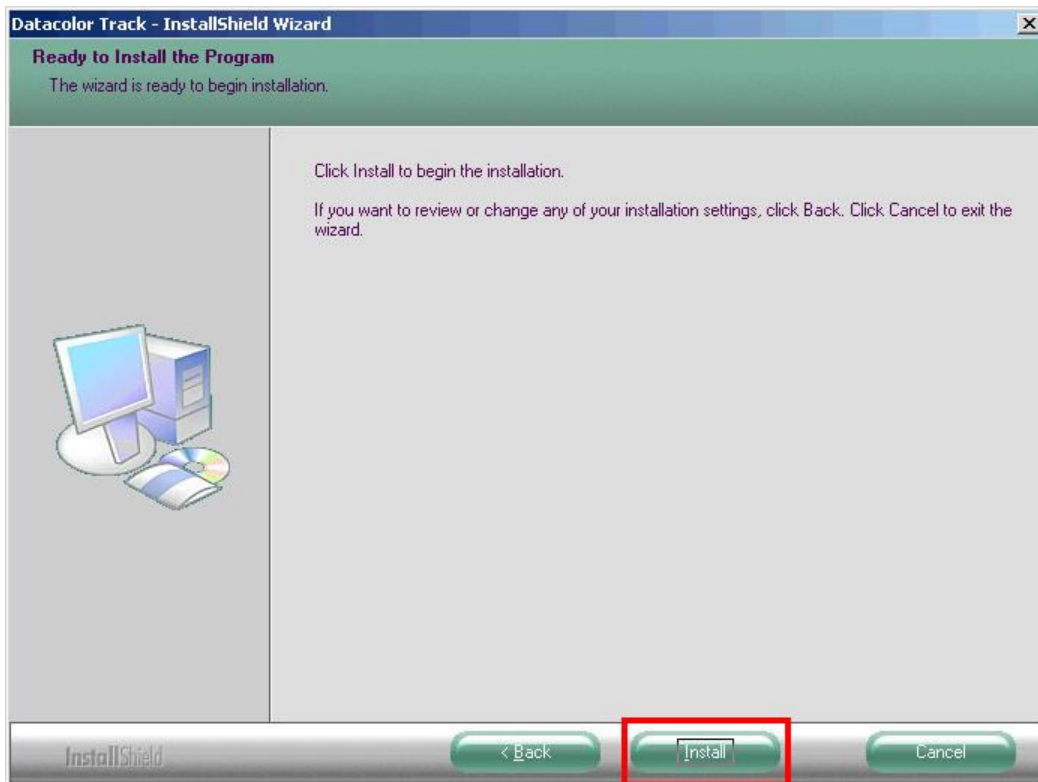
If you have chosen **Custom** Setup Type you can select program components etc. you like to install (e.g. to install the empty MSSQL database without Sybase installation)



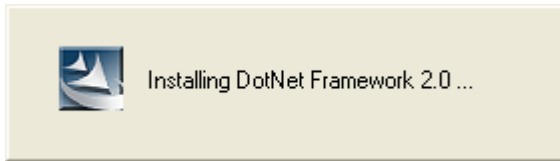
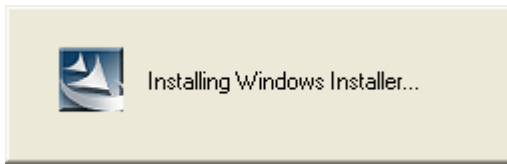
Accept the proposal, type in a new or select one of the existing folders.



Select as to which shortcuts are to be defined and press **Next**.



Should the user want to change previous settings before copying the files, he can go back by clicking **Back**. To start copying the files click **Install**.



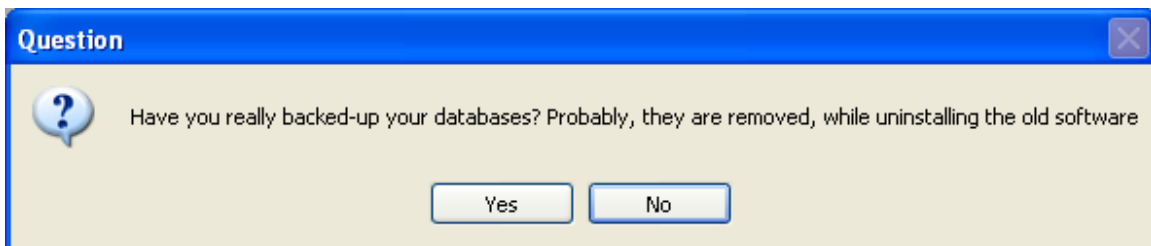
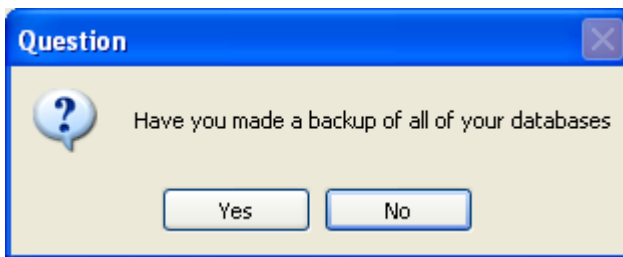
Setup starts by installing the Microsoft .(Dot)Net Framework V2.0, necessary for all Datacolor TRACK related installations.

If a previous version of Datacolor software is already installed on the client all necessary database updates are executed with Sybase 7 before installing Sybase 9



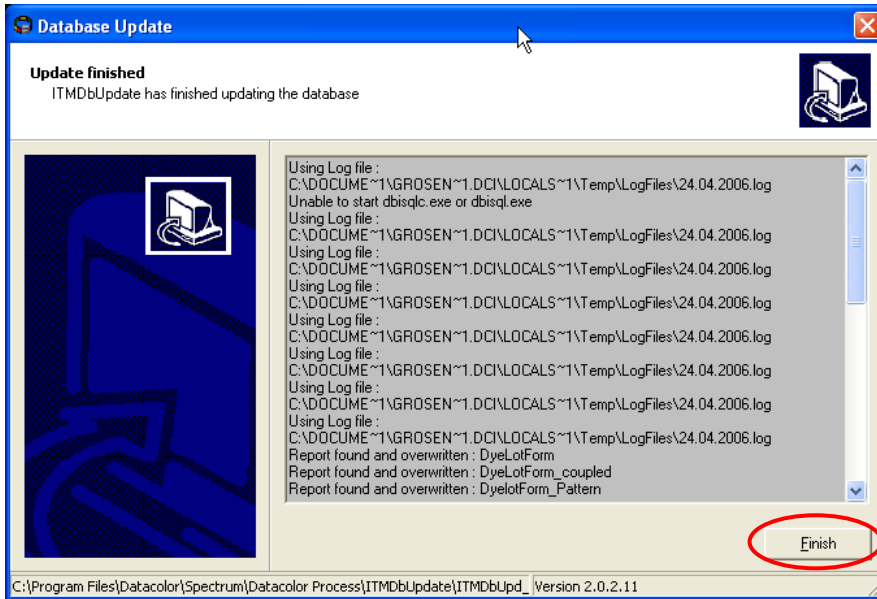
NOTE:

Backup your databases before you upgrade your existing software. The databases depend on the installed software e.g. 'dci_itm.db', 'dci_itm.log'; 'printform.db', 'printform.log'; 'color.db', 'color.log' and 'dci_alab.db', 'dci_alab.log'



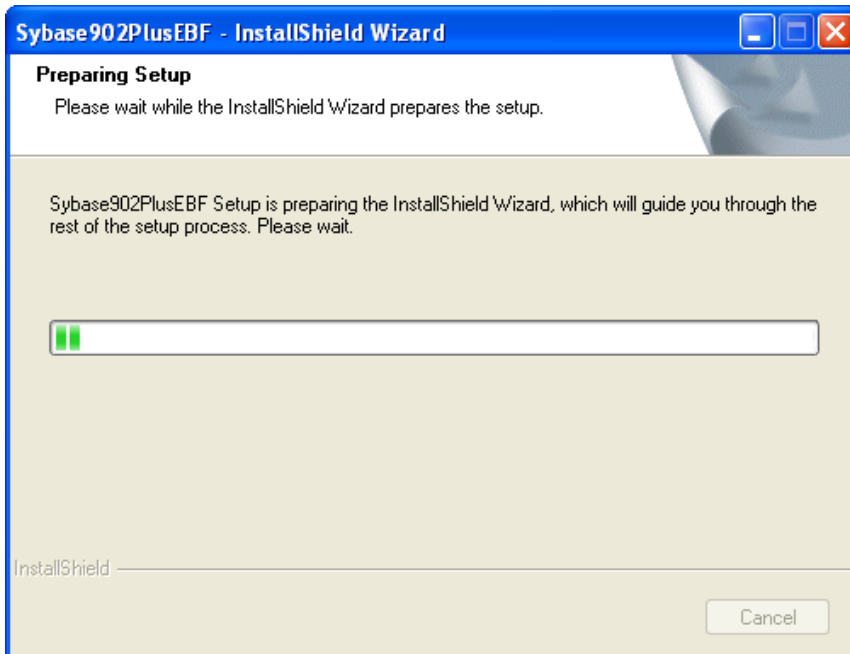
The setup asks twice if you have made a backup of your databases. If that is not the case cancel the setup by clicking 'No'.

The database is updated if you have clicked 'Yes' to continue the setup.



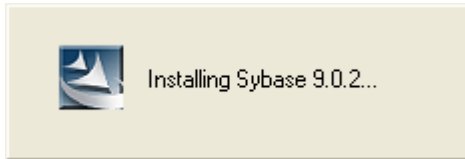
2 Installing Sybase (Personal Server, Client and Tools):

It continues installing with Sybase 9.02 being the database used; the Datacolor TRACK installation also comprises the installation of the Sybase setup to gain access to the required database.

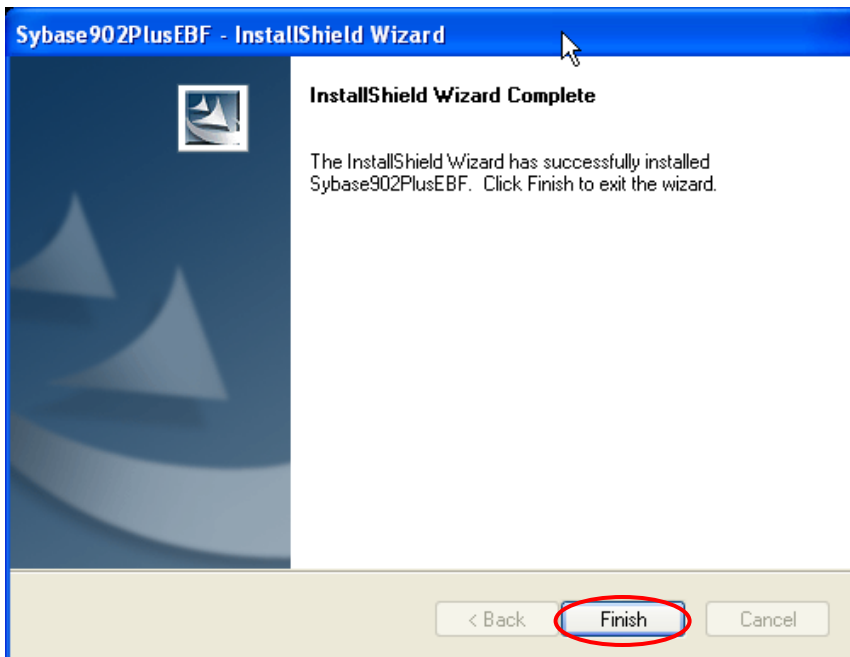
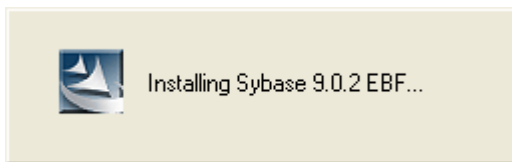


-
- If you are installing Datacolor TRACK for the first time, Sybase Adaptive Server v9.02 will automatically install.
-

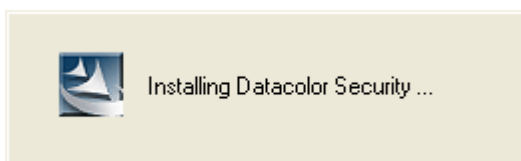
followed by



followed by



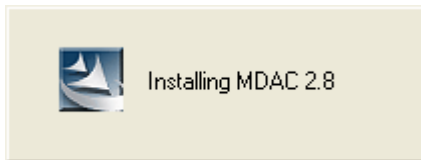
Click Finish to continue the Datacolor TRACK installation



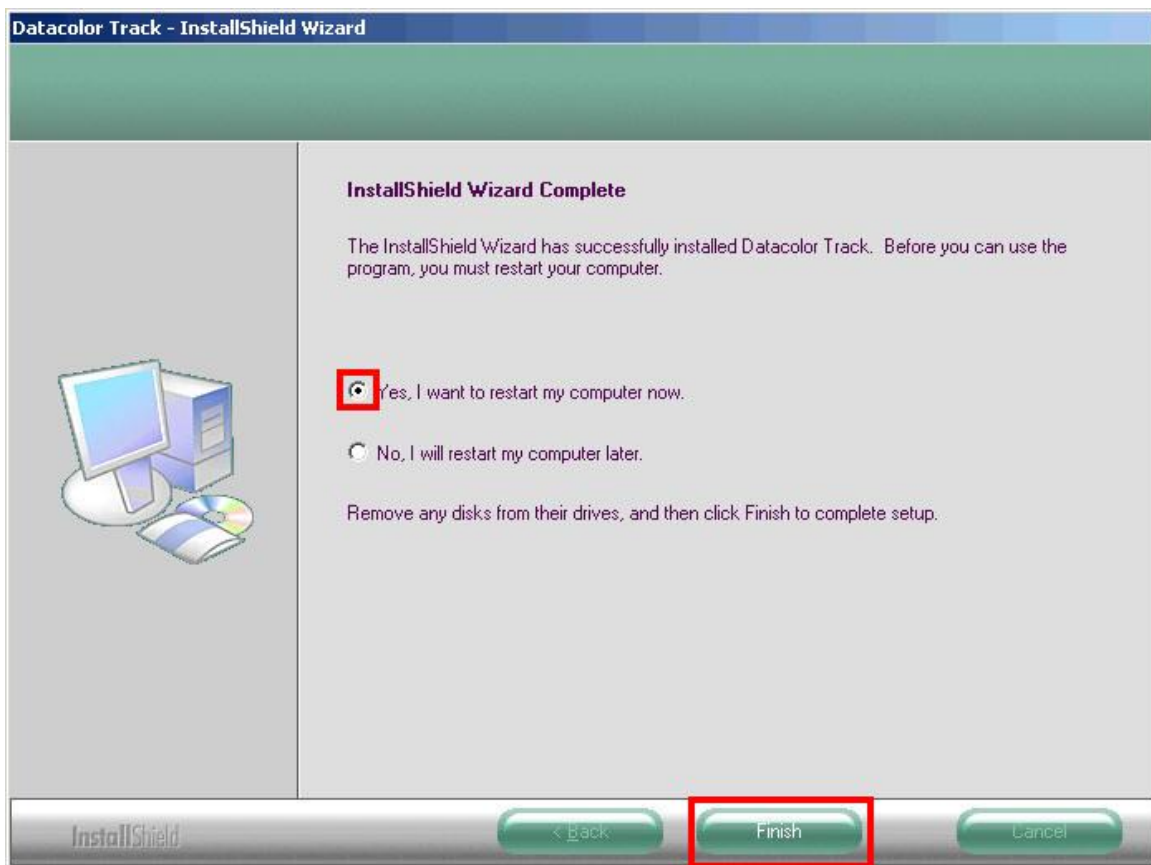
Followed by Datacolor Security component installations,



the Datacolor Envision component,



and the Microsoft Data Access Component installation.



This concludes the installation of **Datacolor TRACK** together with all its necessary components, ready for usage dependent configuration (stand- alone or server application).

3 Datacolor TRACK Network Configuration

- Install **Datacolor TRACK** on all workstations as described in chapter [#Datacolor TRACK Installation Wizard \(New installation\)](#). Create a database directory on the server e.g. **C:\Database** and copy the Datacolor TRACK database files **DatacolorTrack.db** and **DatacolorTrack.log** into this directory (the database files are located after Datacolor TRACK installation to **..\Program Files\Datacolor\Database**).

If you need to install a networked System with more than one Datacolor TRACK workstation you must install the Sybase Server on the Network Server (e.g. Windows NT Server; Windows 2000 Server, Windows 2003 Server) or a dedicated Sybase Server PC.

3.1 To install the Sybase Server software, do the following:

1. Start Windows.
2. Place the product CD into the CD drive.
3. The main installation menu should appear automatically.

If you do not see the menu window, do the following:

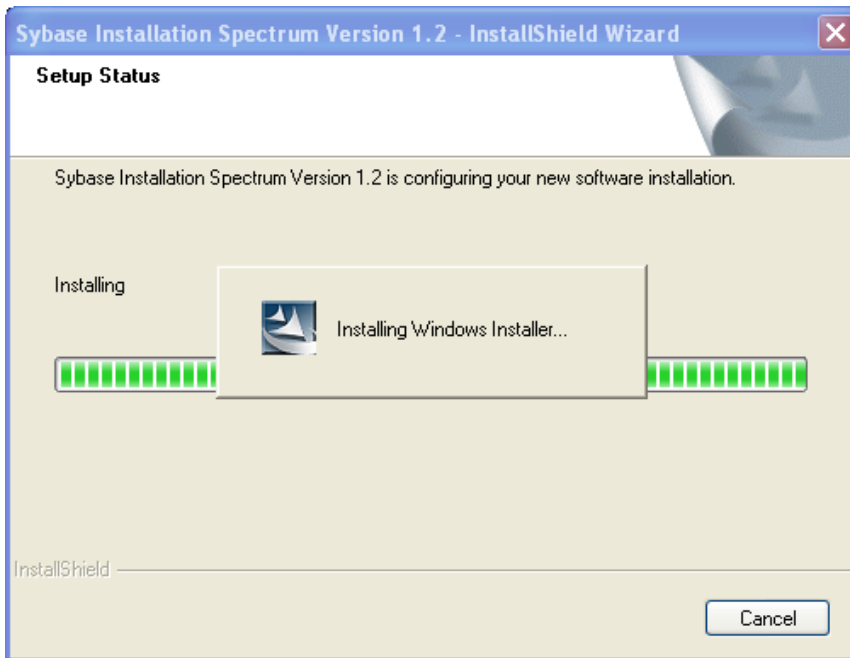
Click the **Start** button From the start menu, choose **Run...**

in the Run dialog box, type **D: MENU** and click OK. (If your CD Drive is a letter other than D, use that letter in the dialog box.)

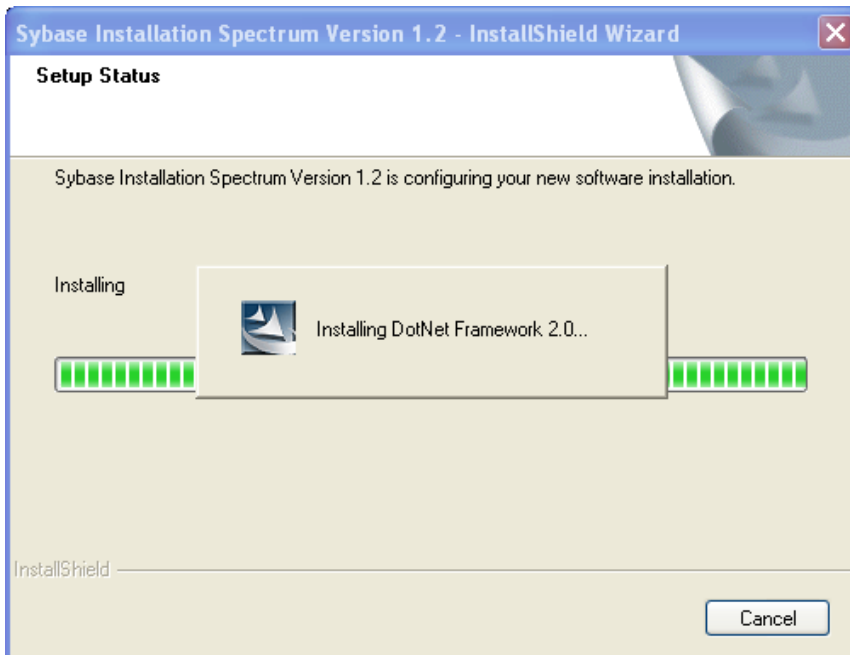
Select Install **Sybase® 9 Server** on the main installation menu to install the Sybase Server.



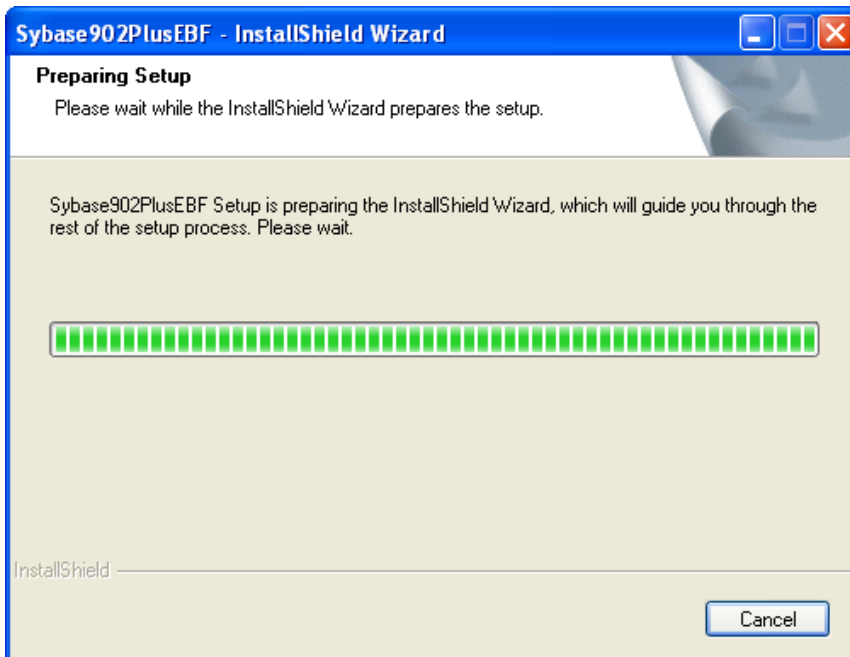
When the Main Installation Menu is displayed, choose “**Install Sybase® 9 Server.**” The SQL Anywhere Studio 9 Setup program will guide you through installing Sybase on your computer.



followed by

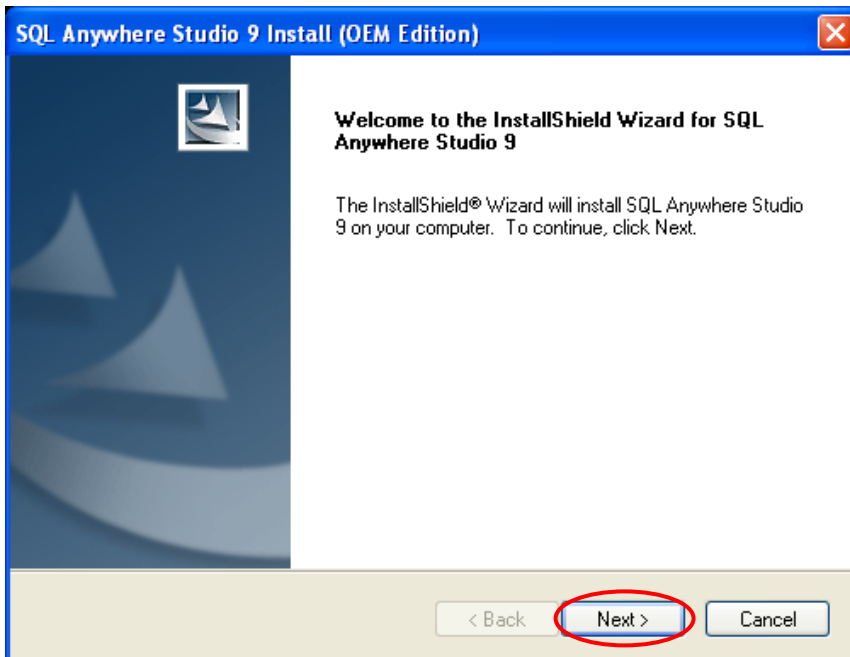


Followed by

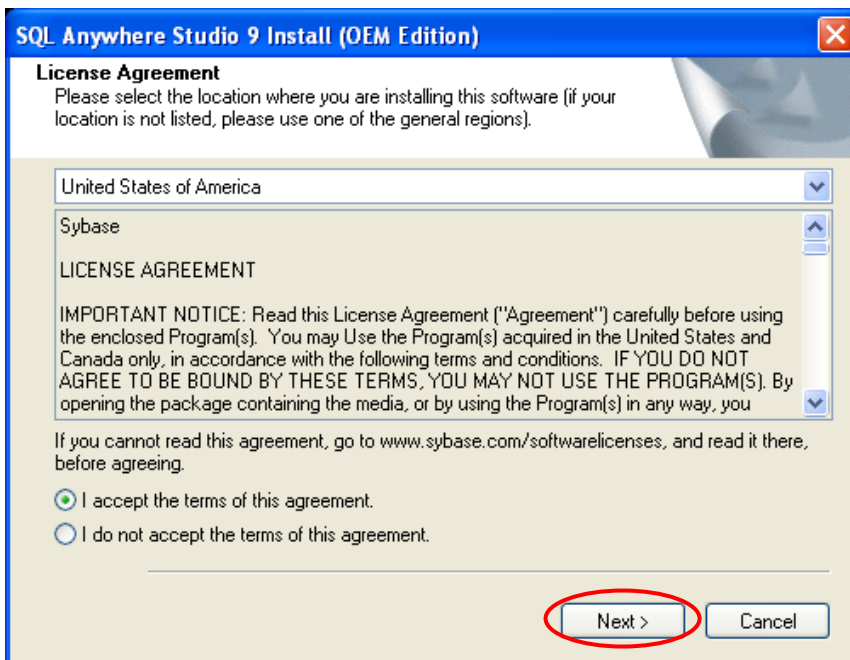


Sybase Setup is started

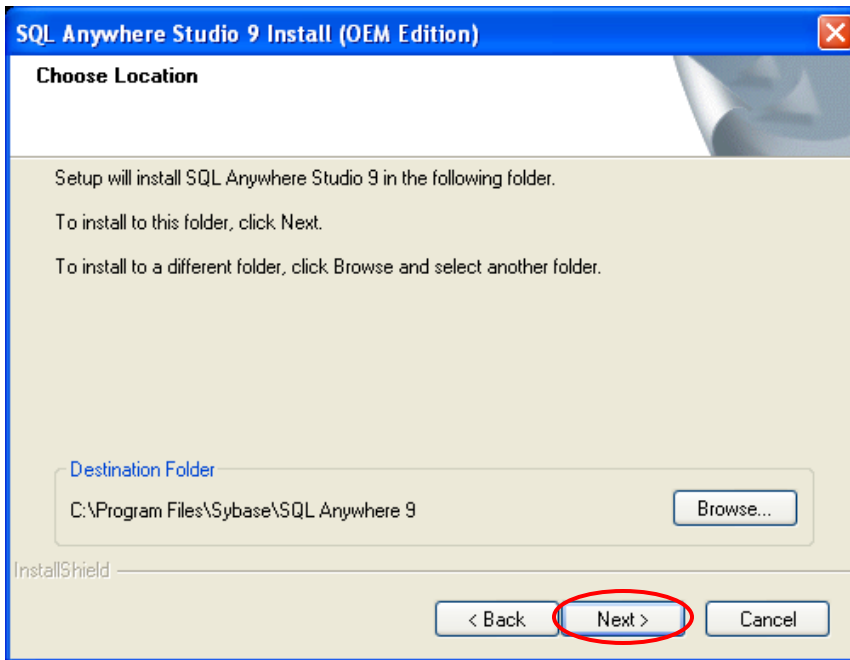




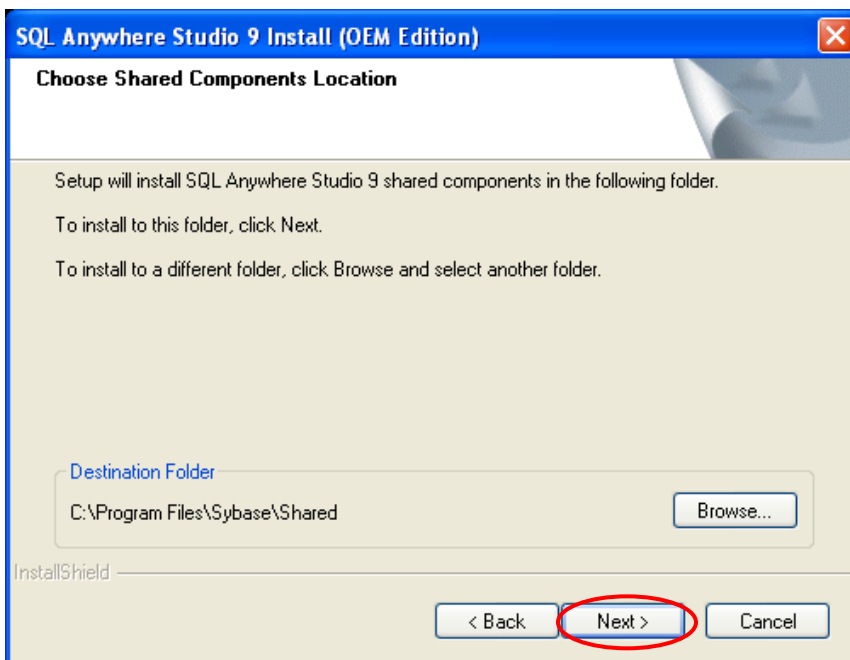
Click **"Next"** to get the license agreement



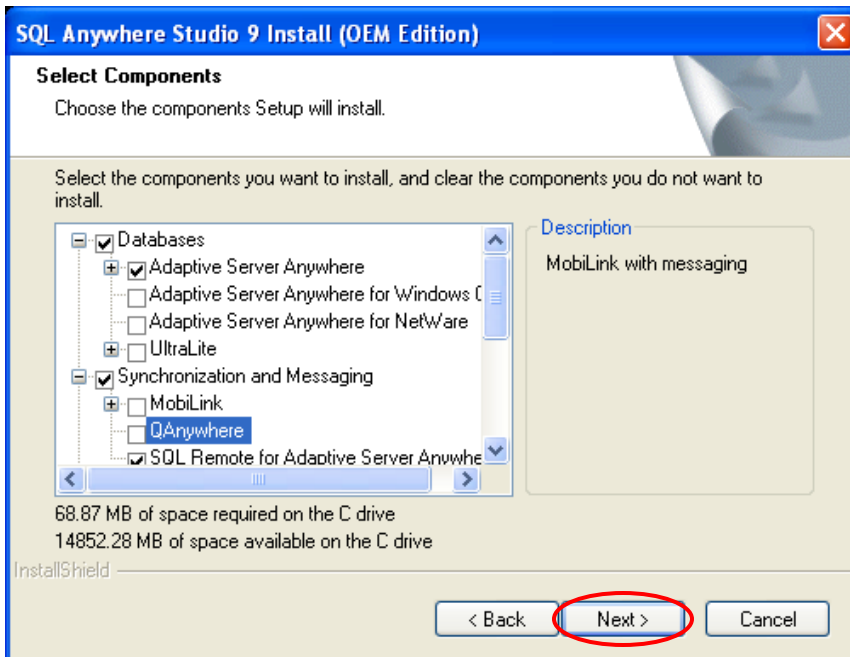
Select your location and click **"Yes"** button to accept the license agreement-



Click **"Next"** button to accept the default installation folder

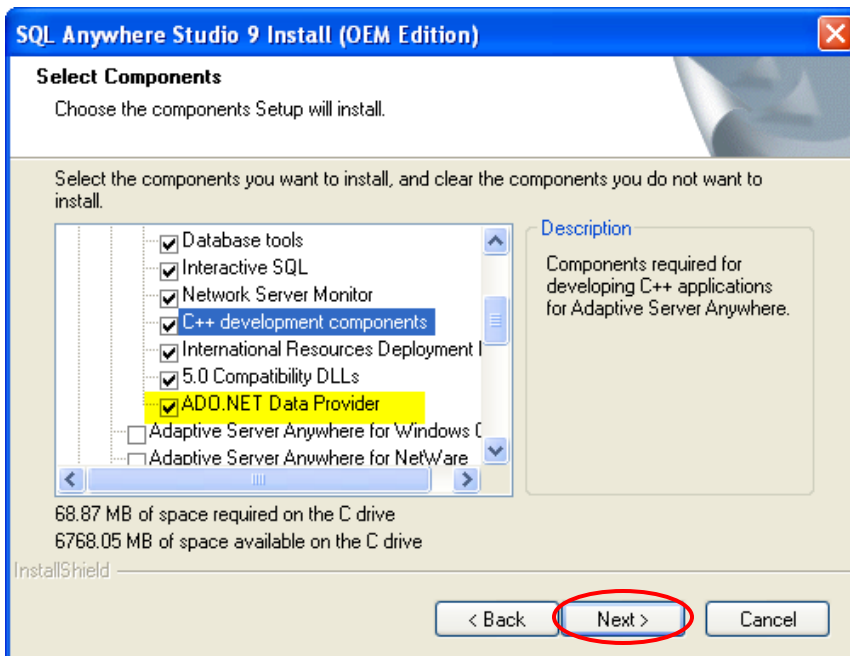


Click **"Next"** button to accept the default installation folder for the shared components



Remove the check marks for **UltraLite**, **MobiLink** and **QAnywhere**
Accept all other selections and proceed with the installation

Open Adaptive Server Anywhere and check that ADO.NET data Provider is checked



Click the **“Next”** button to continue

SQL Anywhere Studio 9 Install (OEM Edition)

Server License

Please enter the following server license information

Name:

Company:

Licensed Units:

License Type

☐ CPU-based model

☒ Networked Seat (per-seat) model

InstallShield

< Back **Next >** Cancel

Check the License Type and type in the number of Licensed Units you have ordered (is equal to the number of applications – Datacolor TRACK, Datacolor TOOLS, Datacolor MATCH, Datacolor PROCESS etc. – installed on the workstations) - use the Networked Seat (Per-seat) model - and click the “**Next**” button.

SQL Anywhere Studio 9 Install (OEM Edition)

Select Program Folder

Please select a program folder.

Setup will add program icons to the Program Folder listed below. You may type a new folder name, or select one from the existing folders list. Click Next to continue.

Program Folder:

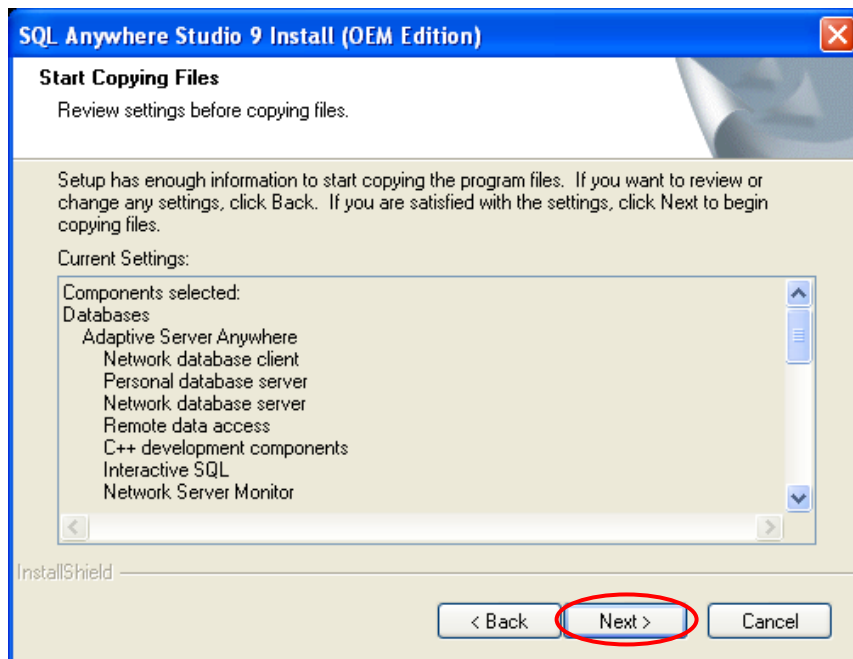
Existing Folders:

- Accessories
- Administrative Tools
- Eraser
- Games
- HyperSnap-DX 5
- Microsoft SQL Server
- Microsoft SQL Server - Switch
- Startup

InstallShield

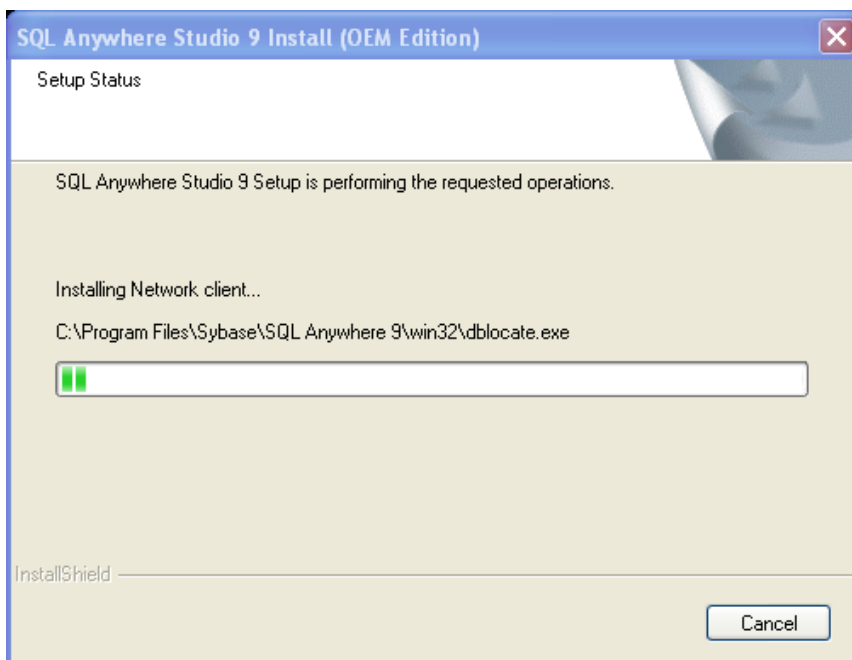
< Back **Next >** Cancel

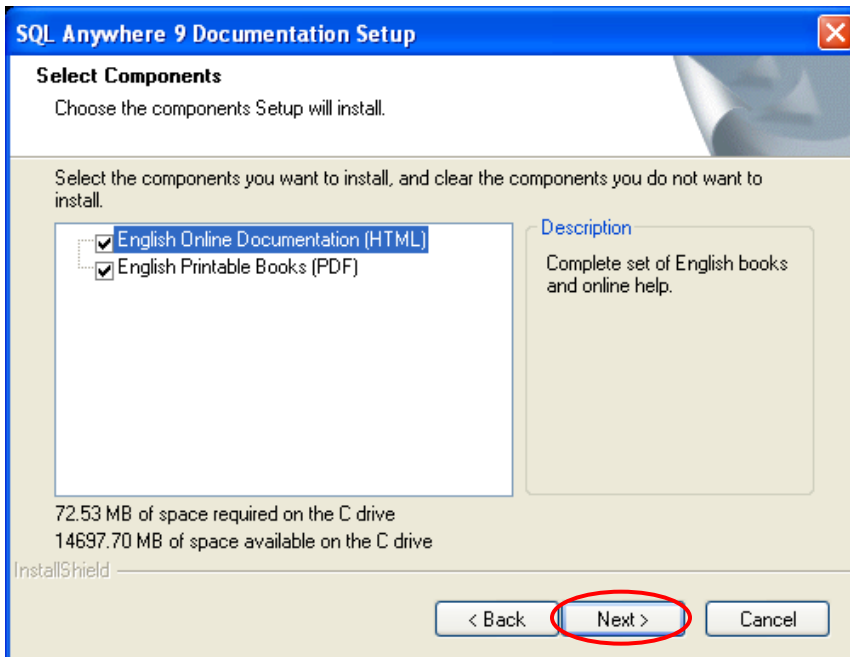
Click “**Next**” button to accept the default program folder



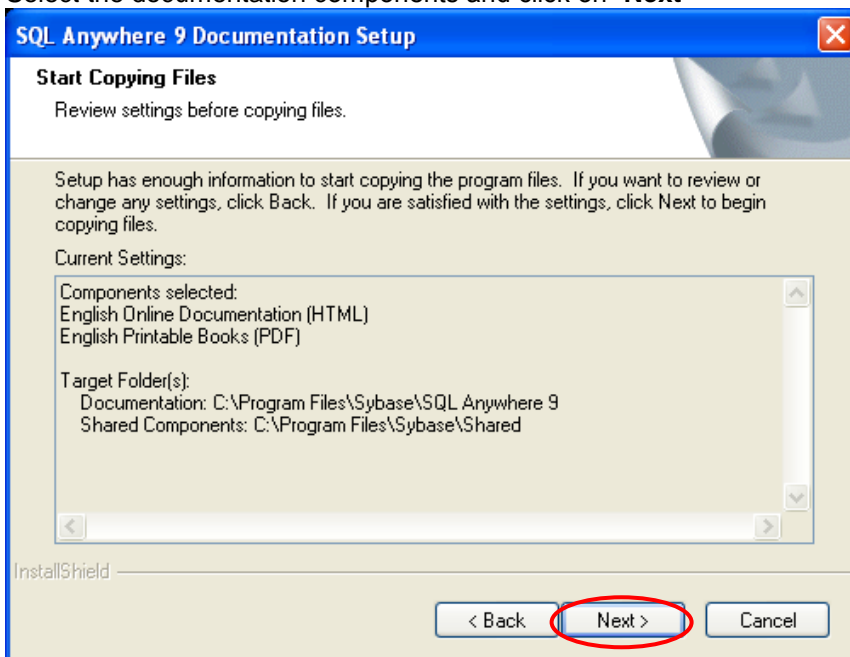
Click “**Next**” button to accept the settings and components you selected

The Sybase files are copied now

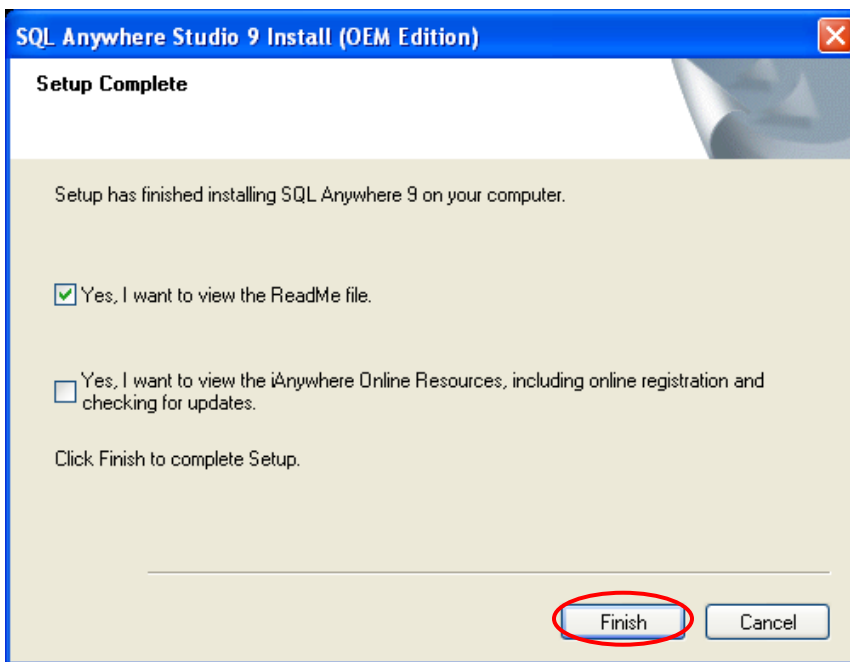
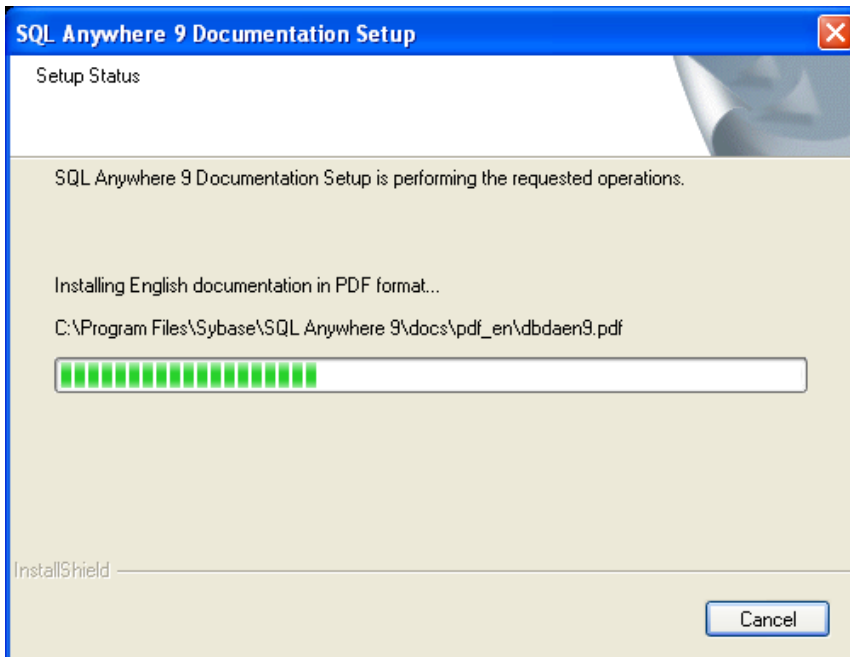




Select the documentation components and click on “Next”



Click on “Next” to install the documentation components; files are copied

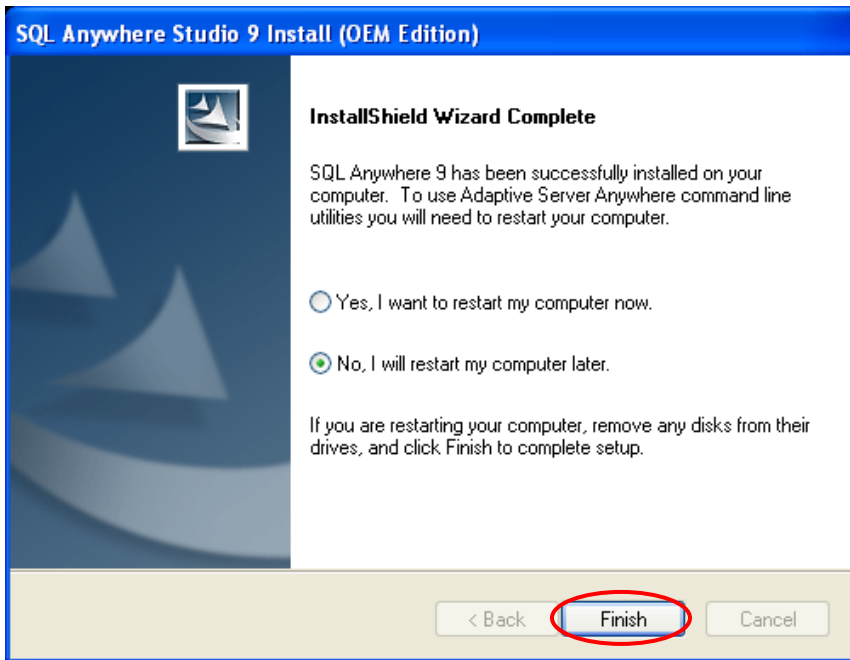


Check only re view the ReadMe file and click on **“Finish”**



NOTE

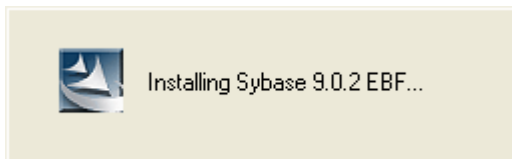
Do not download updates from Sybase. Sybase updated must be confirmed by datacolor!!!

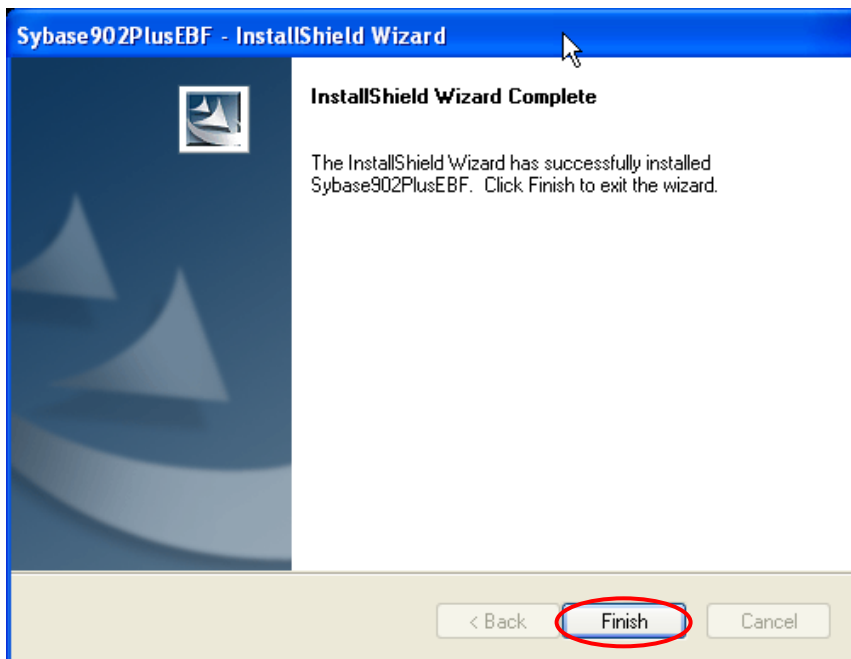


NOTE

Do not restart your computer now. The setup installs now the Sybase EBF !!!

Click on “Finish” to start the Sybase 9.0.2 EBF 3420 installation



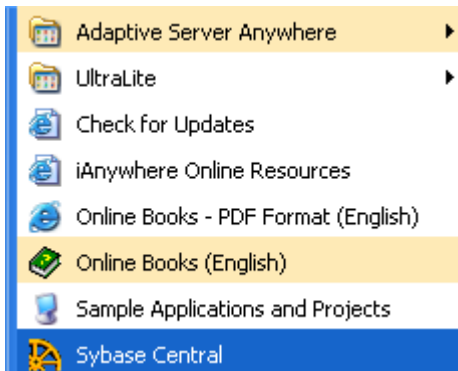


Click on “**Finish**” to close the setup program

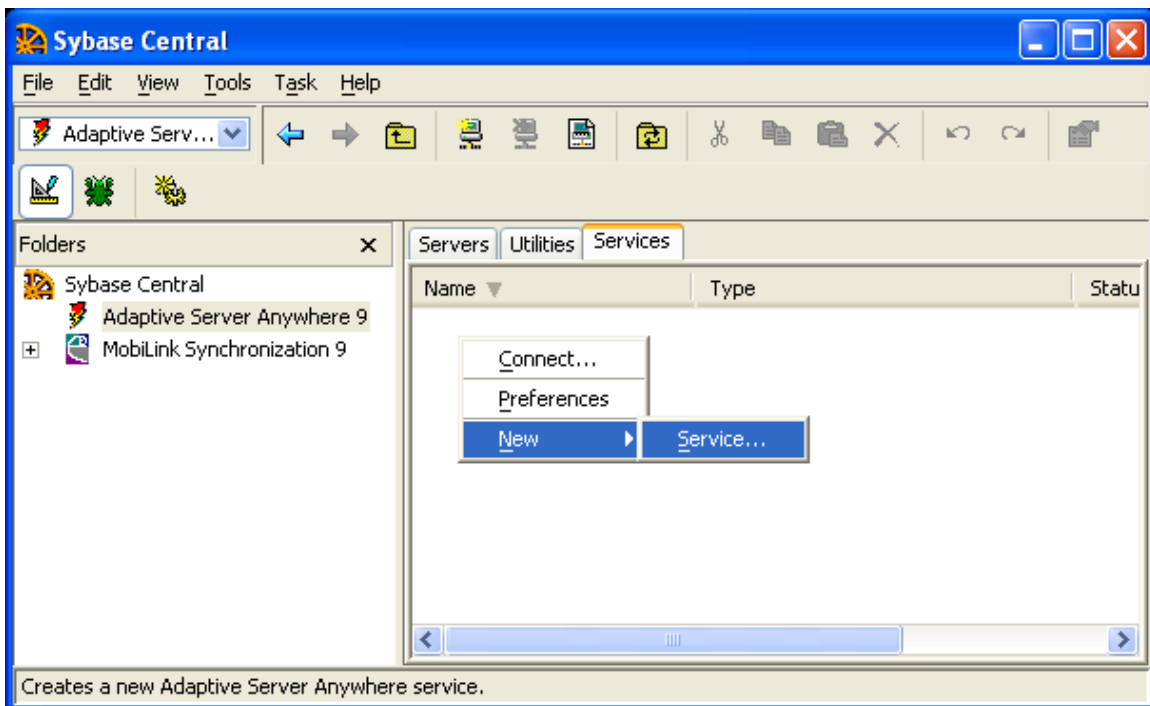
The Sybase Server is installed. Please restart your computer now.

To be able to access the database on a server you have to create a service with the program 'Sybase Central'. The service sets up the connection to the database(s) and must be started before the clients can use the database.

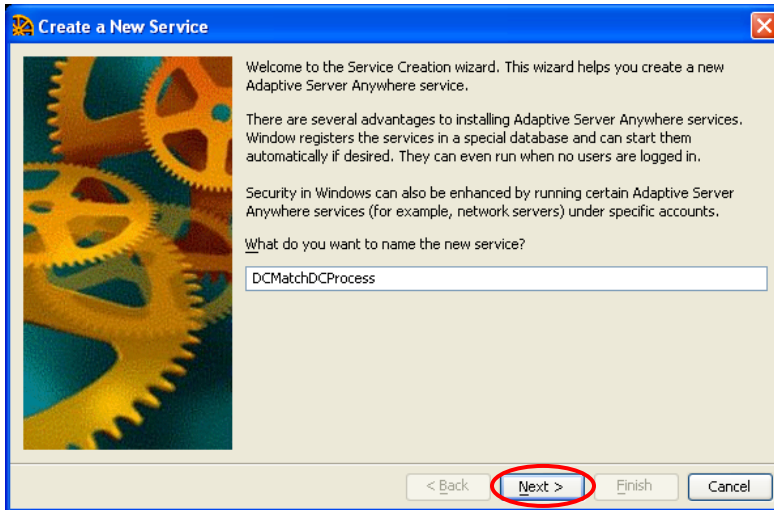
4 Creating a Sybase Service



Start the Program Sybase Central from the Program Group Sybase SQL Anywhere 9.

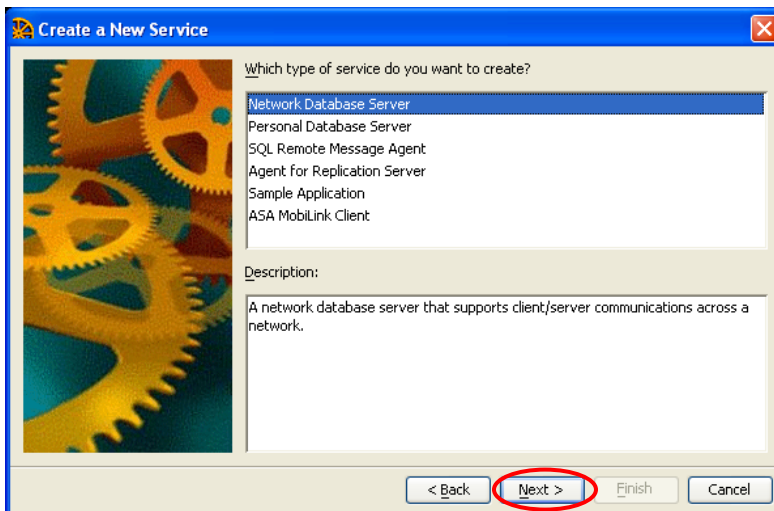


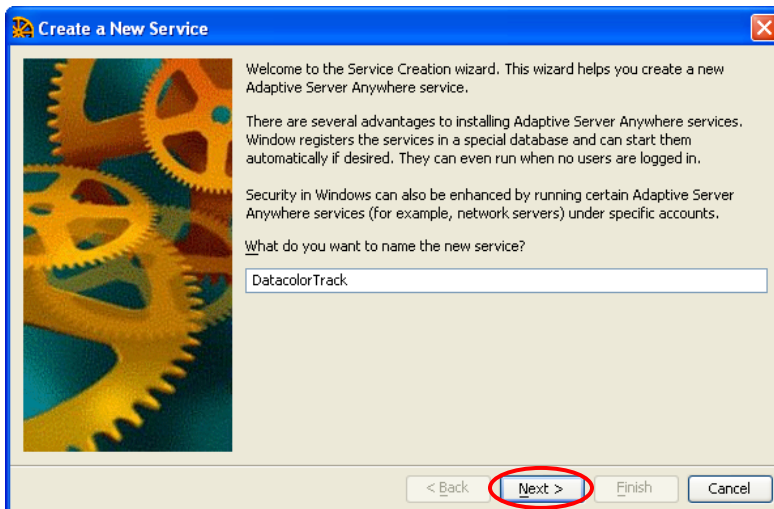
If the program runs, click on the page **Services** and open the context menu **New, Service...** to create the database service. Follow the instructions of the setup program
The next Screen is a Create a New Service screen – type a name for the service and proceed with **“Next”**.



Name the service,
e.g. **DatacolorTrack** and select how the service should be started.

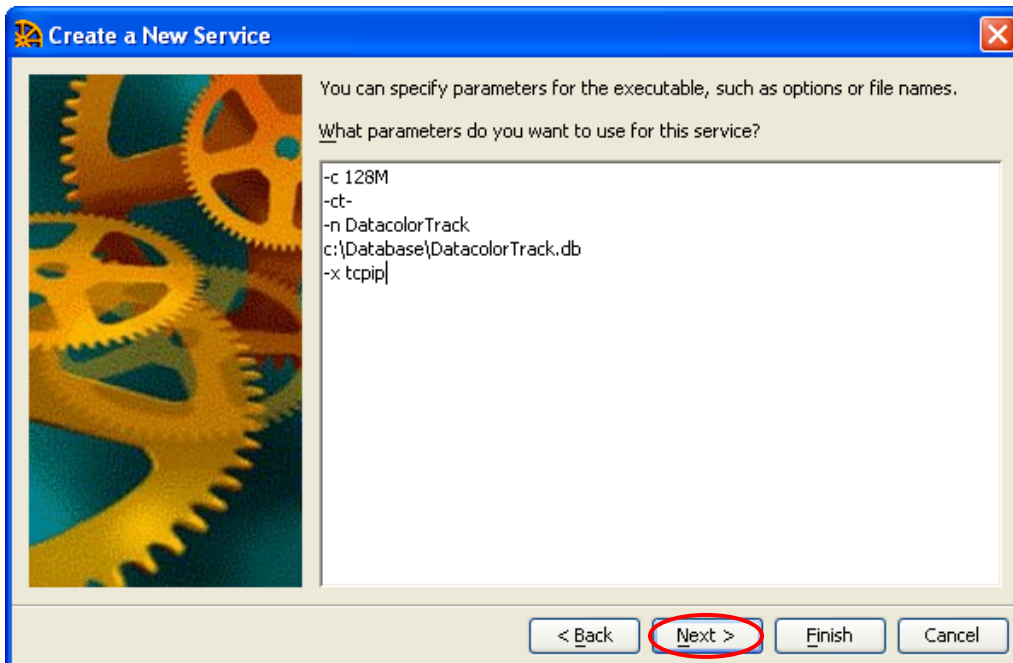
The next dialog of the installation wizard asks you to select the type for the Adaptive Server Anywhere service. Select **Network Database Server** to create the service and click “**Next**”





Specify the name and full path of the executable file for the new service. It defaults to the Sybase server engine DBSRV9.EXE
Click **"Next"**

Fill in the parameters for the new service now.



NOTE

Because Sybase 9 uses character translation by default you have to switch it off. All Chinese and Japanese systems would not work correct if it is not switched off. Till Sybase 7.xx it was switched off by default.

Parameter Settings in the example:

| | |
|--------------------------------------|---|
| -c 128MB | -c <i>Cash size set to 128 MB</i> |
| -ct- | -ct- <i>character translation switched off</i> |
| -n DatacolorTrack | -n <i>Service name</i> |
| C:\database\DatacolorTrack.db | All database to open |
| -x tcpip | -x <i>tcpip Network protocol</i> |

Syntax

{ **dbeng9** | **dsrv9** } [*server-switches*] [*database-file* [*database-switches*]]*

| Switch | Description |
|--------------------|---|
| -c size | <p>Set initial cache size.</p> <p>The amount of memory available for use as a database server cache is one of the key factors controlling performance. You can set the initial amount of cache memory using the -c command-line option</p> <p>The more cache memory that can be given the server, the better will be its performance.</p> <p>The units K and M can be either lower case or upper case. If K or M is not supplied, any integer less than 10000 is assumed to be in kilobytes, and any integer 10000 or greater is assumed to be in bytes. For example, -c 4096 means 4096KB or 4 194 304 bytes. Whereas, -c 200 000 means (an unreasonably small) cache of 200 000 bytes.</p> |
| -ct[- or +] | <p>Perform client-engine or server character translation</p> <p>By default, character set translation is turned on. Character set translation converts strings between character sets that represent the same characters, but at different values. This is useful when the client machine and the database use different character sets. Character set translation is disabled with the -ct- server option. If this argument is supplied as -ct+, character set translation is turned on.</p> <p>In version 7.x and earlier of Adaptive Server Anywhere, the + or - values are not accepted: specifying the -ct option enabled character set translation.</p> |
| -n name | Use name as the name of the database server. |
| -x list | Comma-separated list of communication links to try. |
| -ti minutes | <p>Client idle time before shutdown—default 240 minutes [network server].</p> <p>Disconnect connections that have not submitted a request for <i>minutes</i>. The default is 240 (4 hours). A client machine in the middle of a database transaction holds locks until the transaction is ended or the connection is terminated. The -ti option is provided to disconnect inactive connections, freeing their locks.</p> <p>The -ti option does not disconnect clients that use the shared memory communications</p> |

| | |
|--------------------|--|
| | <p>link.</p> <p>Setting the value to zero disables checking of inactive connections, so that no connections are disconnected.</p> |
| -tl seconds | <p>Default liveness timeout for clients in seconds—default 120 seconds.</p> <p>A liveness packet is sent periodically across a client/server TCP/IP or SPX communications protocol to confirm that a connection is intact. If the server runs for a liveness timeout period (default 2 minutes) without detecting a liveness packet, the communication is severed. The server drops any connections associated with that client. UNIX non-threaded clients and TDS connections do not do liveness checking.</p> <p>The <code>-tl</code> switch on the server sets the liveness timeout for all clients that do not specify a liveness period.</p> <p>Liveness packets are sent at an interval of the (liveness timeout)/4.</p> |

| -c command-line option | |
|-------------------------------|--|
| Function | Set the initial memory reserved for caching database pages and other server information. |
| Syntax | [dbsrv9 dbeng9] -c [integer integerK integerM integerP] ... |
| Applies to | All operating systems and servers. |
| Description | <p>The amount of memory available for use as a database server cache is one of the key factors controlling performance. You can set the initial amount of cache memory using the <code>-c</code> command-line option. The more cache memory that can be given the server, the better will be its performance.</p> <p>The units K and M can be either lower case or upper case. If K or M is not supplied, any integer less than 10000 is assumed to be in kilobytes, and any integer 10000 or greater is assumed to be in bytes. For example, <code>-c 4096</code> means 4096KB or 4 194 304 bytes. Whereas, <code>-c 200 000</code> means (an unreasonably small) cache of 200 000 bytes.</p> <p>The unit P is a percentage of the physical system memory, and if you use this, the argument is a percentage. You can use % as an alternative to P, but as most non-UNIX operating systems use % as an environment variable escape character, you must escape the % character. To use 50 percent of the physical system memory, you would use the following:</p> <p><code>dbeng6 -c 50%% ...</code></p> <p>If no <code>-c</code> option is provided, the database server computes the initial cache allocation as follows:</p> <ol style="list-style-type: none"> 1. It uses the following operating-system-specific minimum default cache sizes: <ul style="list-style-type: none"> Windows CE 600K. Windows NT, Windows 95/98, NetWare, Windows 3.1 2 Mb. UNIX 8 Mb. 2. It computes a runtime-specific minimum default cache size, which is the lesser of the following items: <ul style="list-style-type: none"> 25% of the machine's physical memory The sum of the sizes of the main database files specified on the command line. Additional |

dbspaces apart from the main database files are not included in the calculation. If no files are specified, this value is zero.

3. It allocates the greater of the two values computed.

-n command-line option

Function

Set the name of the database.

Syntax

[dbsrv9 | dbeng9] [server-switches]. database-file -n string ..

Applies to

All operating systems and servers.

Description

Both database servers and databases can be named. Since a database server can load several databases, the database name is used to distinguish the different databases.

By default, the database receives the name of the database file with the path and extension removed. For example, if the database is started on c:\asa6\asademo.db and no -n switch is specified, the name of the database is asademo.

-x command-line option

Function

Specify communications links.

Syntax

```
[ dbsrv9 | dbeng9 ] -x { all
    | none
    | { [ dde | ipx | namedpipes | netbios | tcpip ] parmlist,... }
    } ...
```

parmlist:

```
{ keyword=value;... }
```

Applies to

All operating systems and servers.

Description

For example,

-x tcpip,ipx

allows only TCP/IP and IPX communications.

A shared-memory protocol is provided for same-machine communications. It is always made available for both network server and personal server.

The default set of communications links is to try all settings that are supported by the database server that you are running on your operating system. The Windows CE database server is an exception; the TCP/IP network link is not started unless it is explicitly requested.

The list is a comma-separated list of settings taken from the following list:

- ALL Start all communications links that are supported on this platform by the server that you are starting. This is the default.
- DDE Supported by Windows 95, for same-machine communication from Windows 3.x applications.
- IPX Supported by NetWare, Windows NT, and Windows 95 network servers.
- NamedPipes Supported on Windows NT, for same-machine communication from Windows 3.x applications.
- NetBIOS Supported by Windows NT and Windows 95 network database servers.
- NONE Do not start any communications links except for the shared memory link.

- TCPIP Supported by the network server on all operating systems. This communications link is also supported by the personal database server for same-machine communications.

For some protocols, additional parameters may be provided, in the format

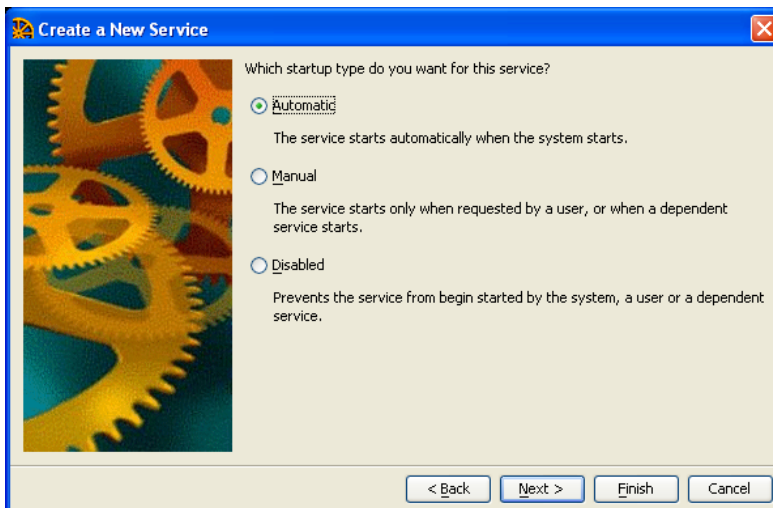
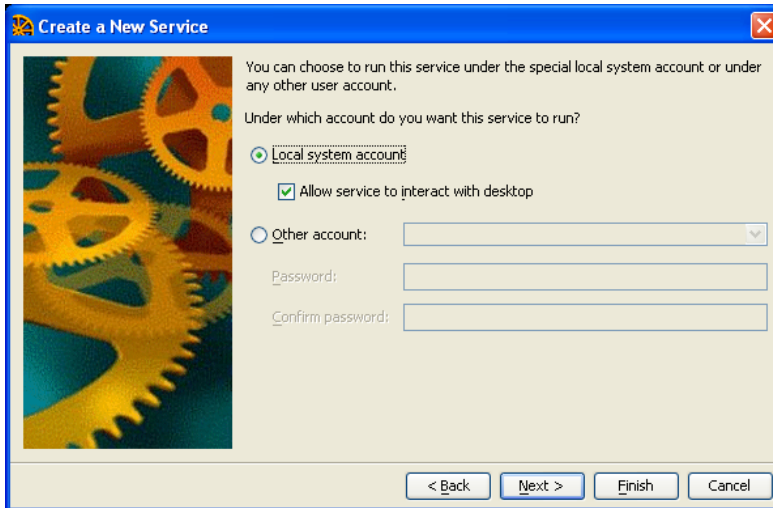
-x tcpip(PARM1=value1;PARM2=value2;...)

For UNIX, quotation marks are required if more than one parameter is supplied:

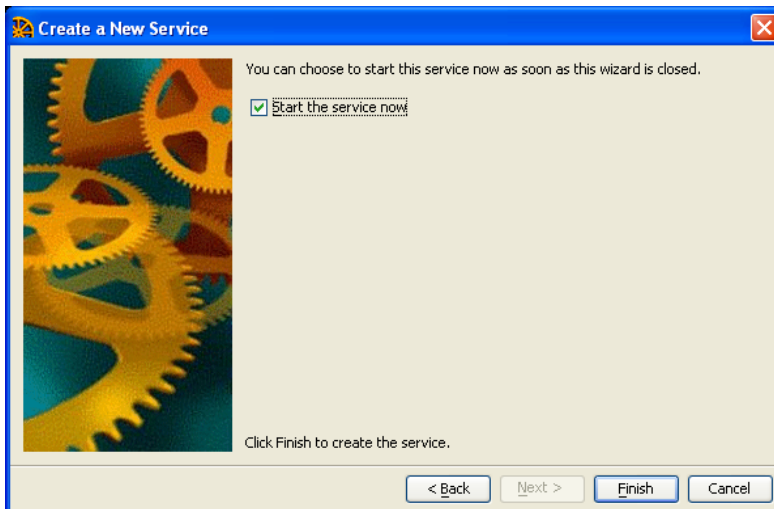
-x "tcpip(PARM1=value1;PARM2=value2;...)"

For a description of available parameters

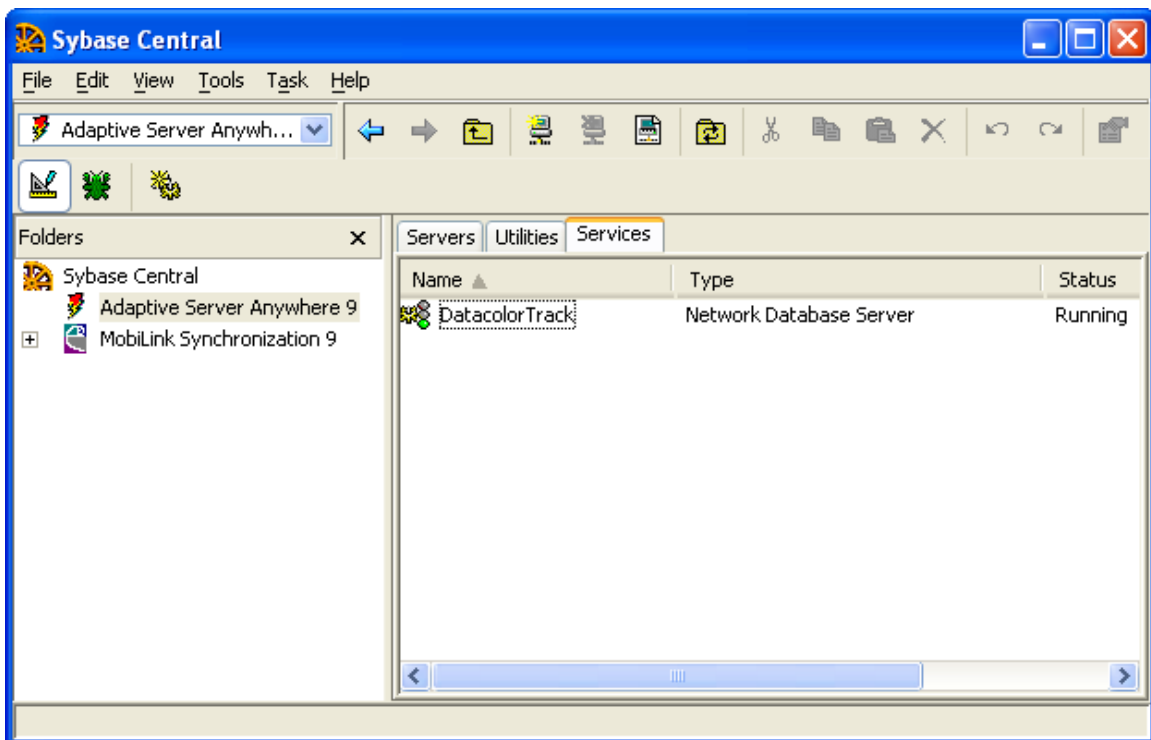
Accept the default settings on the 'Choose Account' 'and Choose Option' dialog box.



Use **Automatic** to be sure that the service starts every time the system starts. Click "**Next**"



Click the 'Finish' button to save and start the service.

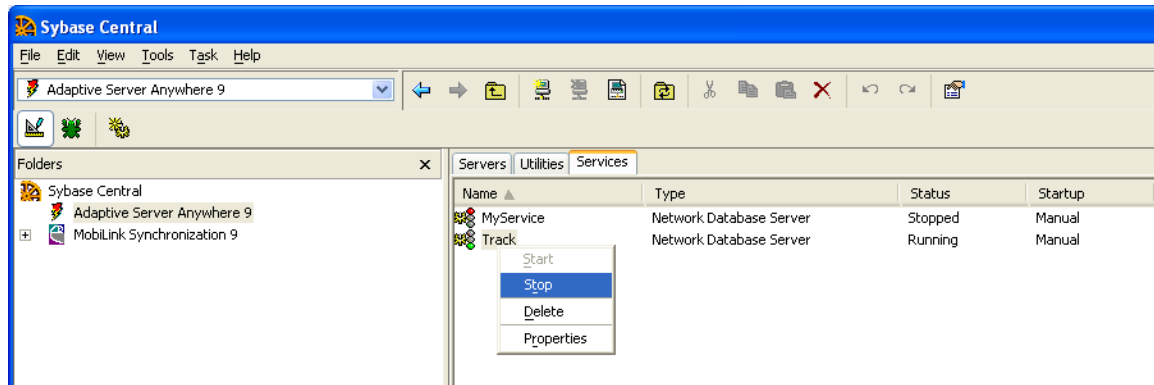


An indication that the service is running is the green traffic light in Sybase Central.

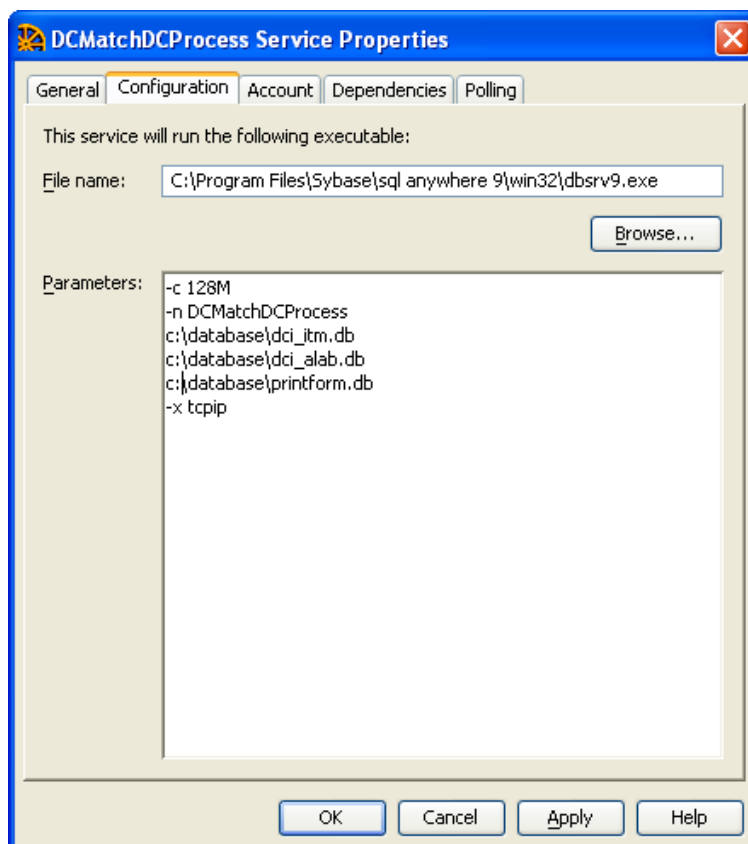
4.1 How to change an existing Sybase 7 service to run with Sybase 9

Don't forget to modify your Sybase database service that it uses the Sybase 9 server engine. This can be done with **Sybase Central**.

Right click the Service and click on 'Stop'



Select 'Properties'



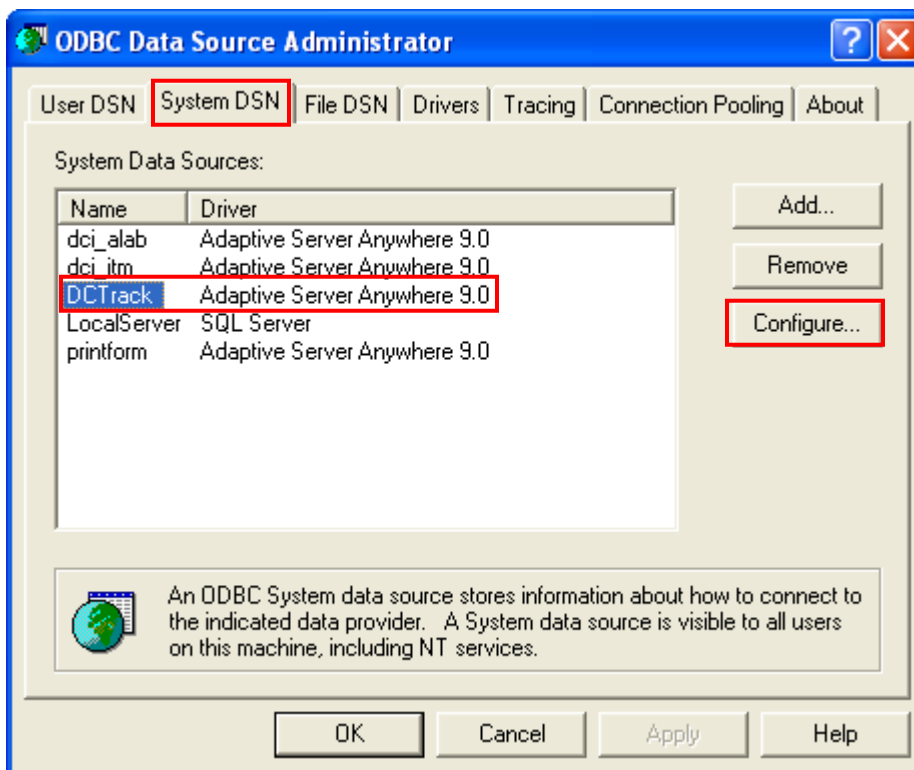
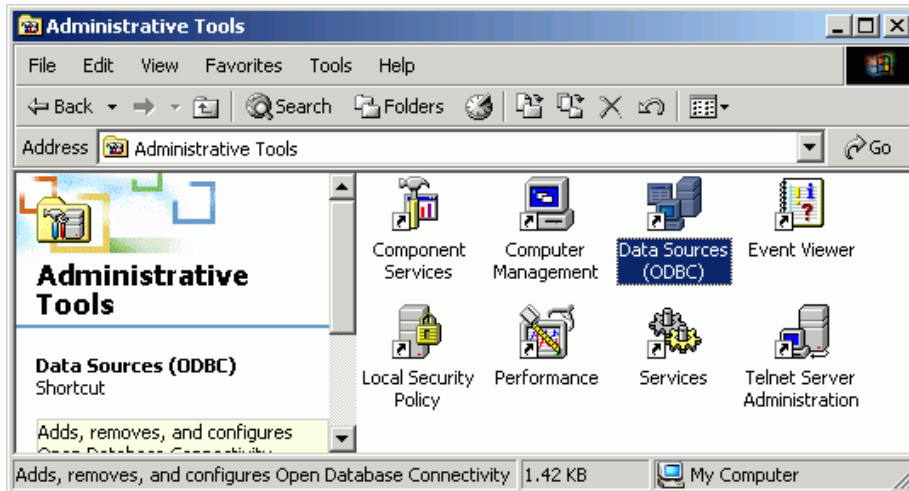
Select the server engine from C:\Program Files\Sybase\sql anywhere 9\win32\dsrv9.exe (default installation path) and click on 'OK'.

Don't forget to start the service again.

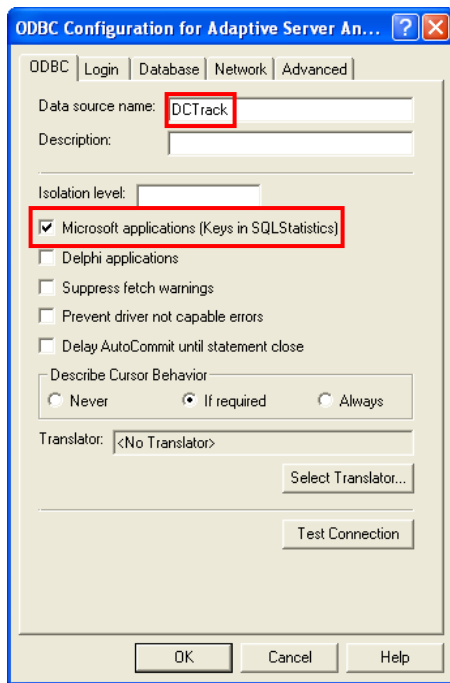
4.2 ODBC Data Source Administrator

The Data Sources are configured automatically if Datacolor TRACK is installed as standalone system. If the Database is running on a server you must re-configure the Data Sources.

Run the Control Panel and double click the icon **Data Sources (ODBC)**; the ODBC Data Source Administrator dialog opens. .



Three data sources are created as System DSNs during installation – **dci_alab**, **dci_itm** and **printform**. These data sources are local to a computer, rather than dedicated to a user. The system, or any user having privileges, can use a data source set up with a system DSN. Select **dci_itm** and click the button **Configure**

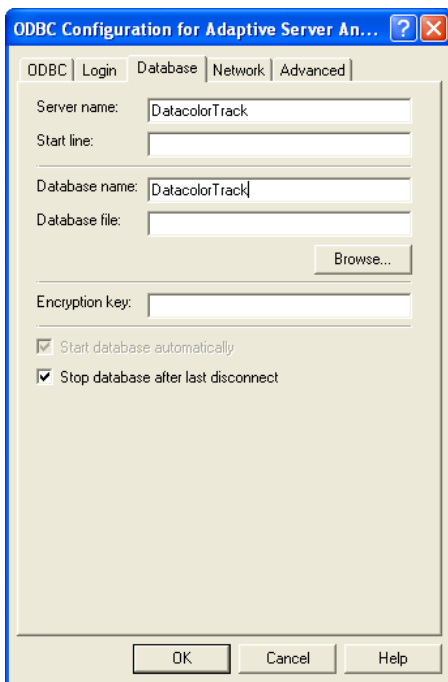


The Data source name must be dci_itm

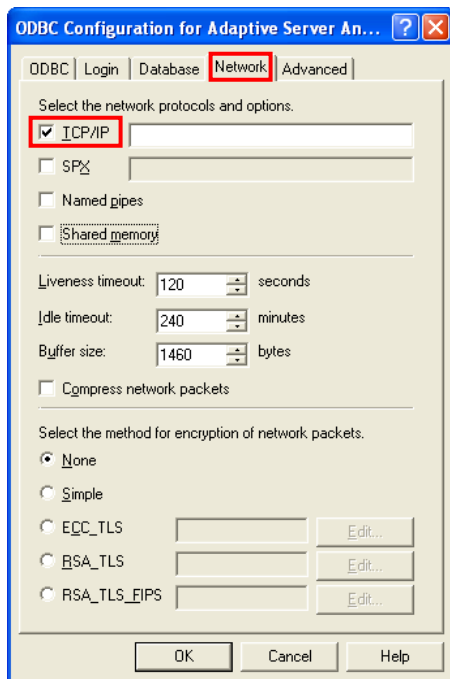
Microsoft applications must be checked

Other settings are default

There is no need to define a login.



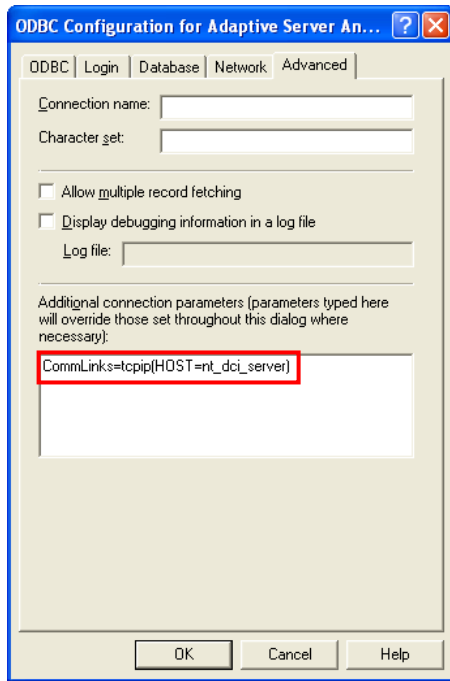
Type in the service name you have created on the server during the Sybase Service definition e.g. **DatacolorTRACK**, and give the database name without extension you like to work with.



Normally the service starts for all protocols available. We advice to use the TCP/IP protocol.

4.2.1 Client ODBC configuration with multi segmented network architectures

Under the TCP/IP protocol, clients search for database servers by broadcasting a request. Such broadcasts will typically not pass through gateways, so any database server on a machine in another (sub)network, will not be found. If this is the case, you must supply the host name of the machine on which the server is running using the -x command-line option. This is required to connect to NetWare servers over TCP.



From the client side, the communications parameters are entered as the CommLinks communication parameter:

```
CommLinks=tcip(PARM1=value1;PARM2=value2;. . .),IPX
```

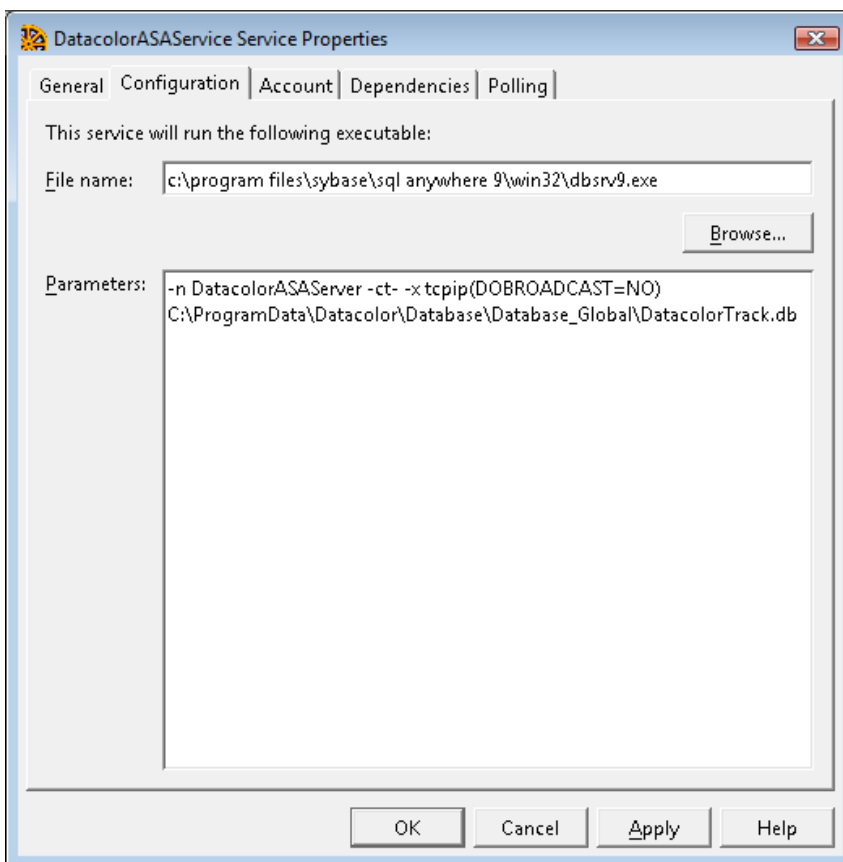
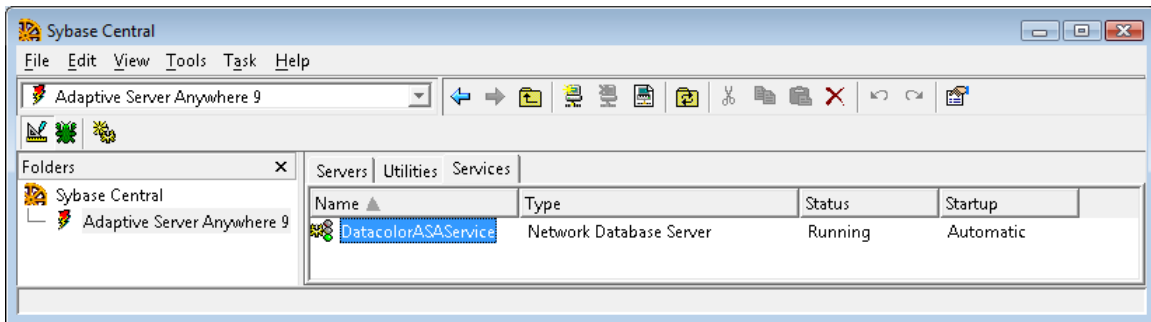
If there are spaces in a parameter, the network communication parameters must be enclosed in quotation marks to be parsed properly by the system command interpreter:

```
CommLinks="tcip(PARM1=value 1;PARM2=value 2;...),IPX"
```

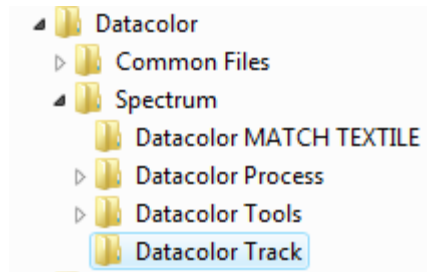
e.g. HOST = PARAM1 , nt_dci_server is value1 (it is the name of the Server running the Sybase service)

5 Installation under Microsoft Vista

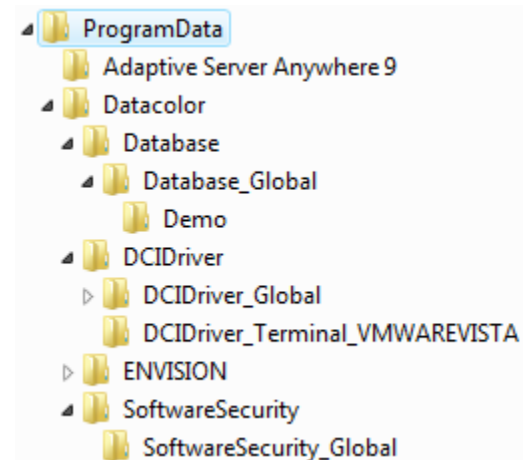
To run Datacolor TRACK V1.4.3 under Vista a Sybase Server is created during installation. The setup creates a Sybase Service with the name DatacolorASAService. This service starts a Sybase server with the name DatacolorASAServer.



New file location under Vista:




The main components of Datacolor software are still installed in **[Drive:]\Program Files\Datacolor\Common Files**, and **[Drive:]\Program Files\Datacolor\Spectrum....**



Databases and all setting files are installed under:
Empty database:
C:\ProgramData\Datacolor\Database\Database_Global
Demo database:
C:\ProgramData\Datacolor\Database\Database_Global\Demo
Setting files for instrument drivers:
C:\ProgramData\Datacolor\DCIDriver...
Settings for Envision:
C:\ProgramData\Datacolor\ENVISION...
Settings for SoftwareSecurity:
C:\ProgramData\Datacolor\SoftwareSecurity.

The location of these files is under Windows XP
C:\Documents and Settings\All Users\Application Data\Datacolor...

 **NOTE:** The Sybase Server icon is not displayed in the system tray of Vista. It is not allowed for Windows Services to interact with the desktop.
If you are setting up networked system with a common database on a dedicated server with several Vista workstations you should delete the DatacolorASAServices on the local VISTA systems after installing the Datacolor software. Don't forget to change the local ODBC settings, to connect to the dedicated Sybase server with the common database.

The Sybase CD installation will automatically detect a Vista system and install a different Sybase EBF version. The Sybase EBF version for Vista is V9.0.2.3456. The Sybase EBF version for non-Vista systems is V9.0.2.3420.

6 Validating Datacolor Software

Datacolor Spectrum Software is protected from unauthorized use by a software license. When the software is initially installed, the software license is in a demo period that will allow access for a fixed amount of time. In order to run the software after the demo period, the software license must be validated.

There are a number of ways to validate the software. In general you will need the following information:

1. You will need the **Serial Number** for your software. This number is supplied by Datacolor and is found on the CD case.
2. You will need a **Computer Validation Number**. This number is generated by the security software and is unique to your computer.

Validation information is accessed and input in the Datacolor Validation Window shown below:

The screenshot shows a window titled "datacolor Security Client Ver 4". Inside, it says "The Unlock Response Number will update this product with new features." and "datacolor" with a red bar. Below that, it says "300: 1 of 10 Licenses used". A link is provided: "Internet enabled users may validate now by clicking on this link." followed by a paragraph: "Otherwise, to validate your software, please visit <http://pmweb.datacolor.com>. If you do not have access to the internet, you can email the requested information from the enclosed form to SoftwareLicense@Datacolor.com or phone your local sales office or dial 1-800-982-6496 for toll free service in the U.S. and Canada." There are three input fields: "Serial Number" with the value "1280928015", "Computer Validation Number" with the value "A309281740279-7167774", and "Unlock Response Number" which is empty. At the bottom, it says "It may take up to seven days to validate your software. Please do so as soon as possible so that you won't be without the use of this software." and a "Continue" button. The version "Version 4.2.0" is at the bottom right.

Datacolor Tools will display the Validation Window every time it starts during the demo period. The Validation Window can be accessed from "About" window in Datacolor Tools, select "License Info".

You can validate the software in 3 ways:

- Using a Web Connection – Link is on the Validation Window. Example is shown below

- E-Mail – Send Serial Number and Computer Validation Number for the product to SoftwareLicense@Datacolor.Com. You will receive an Unlock Response Number by e-mail that you will put into the Validation Window.
- Phone – In the US and Canada phone toll free 1-800-982-6496 or call you local sales office. You will need the Serial Number and the Computer Validation Number for the product. You will be given an Unlock Response Number that you will put into the Validation Window.

datacolor Security Client Ver 4

The Unlock Response Number will update this product with new features.

datacolor

300: 1 of 10 Licenses used

[Internet enabled users may validate now by clicking on this link.](#)

Otherwise, to validate your software, please visit <http://pmweb.datacolor.com/>. If you do not have access to the internet, you can email the requested information from the enclosed form to SoftwareLicense@Datacolor.com or phone your local sales office or dial 1-800-982-6496 for toll free service in the U.S. and Canada.

Serial Number
1280928015

Computer Validation Number
A309281740279-7167774

Unlock Response Number

It may take up to seven days to validate your software. Please do so as soon as possible so that you won't be without the use of this software.

Continue

Version 4.2.0

Type the Serial Number for the product into this field.

Tip: To avoid retyping this number later, highlight the number and then copy it to the clipboard using the Ctrl-C command.

Click the link to go to the Datacolor Software Validation Web Service.

Welcome to Datacolor's software validation web service. To validate your software, please enter the following information, then press continue.

First Name: John

Last Name: Doe

EMAIL: xyz@company.com

Serial Number: 1217185437

Continue

[Contact Webmaster](#)

Type a contact name in the First Name and Last Name fields.

Give your e-mail address.

Input the product Serial Number.

Tip: Paste it if you copied it earlier.

Click the Continue button.

The serial number you entered is for Datacolor Match Pigment Datacolor Match Pigment Plus.
Your Order Number is 123456.

Please verify that this purchase information is correct. If you have questions, click "Contact Webmaster".

Press Continue to validate your software.

[Continue](#) [Back](#) [Contact Webmaster](#)

This screen verifies that the serial number is valid and displays information about the product.

Click the Continue button to proceed.

Please enter your Computer Validation Number as displayed in your Datacolor Software:

[Validate](#)

After entering the Computer Validation Number, click Validate to continue.

Enter the Computer Validation Number from the Validation Window.

Tip: You can copy this number on the clipboard from the Validation Window and paste it in here.

[Validate Another](#) [Close This Window](#) [Contact Webmaster](#)

Please enter your Computer Validation Number as displayed in your Datacolor Software:

[Validate](#)

Unlock Response Number:

Please enter the above Unlock Response Number into the Unlock Response section of your Datacolor Software validation screen.

An email has been sent to bbinder@datacolor.com with confirmation of this transaction. Please keep this for your records.

[Validate Another](#) [Close This Window](#) [Contact Webmaster](#)

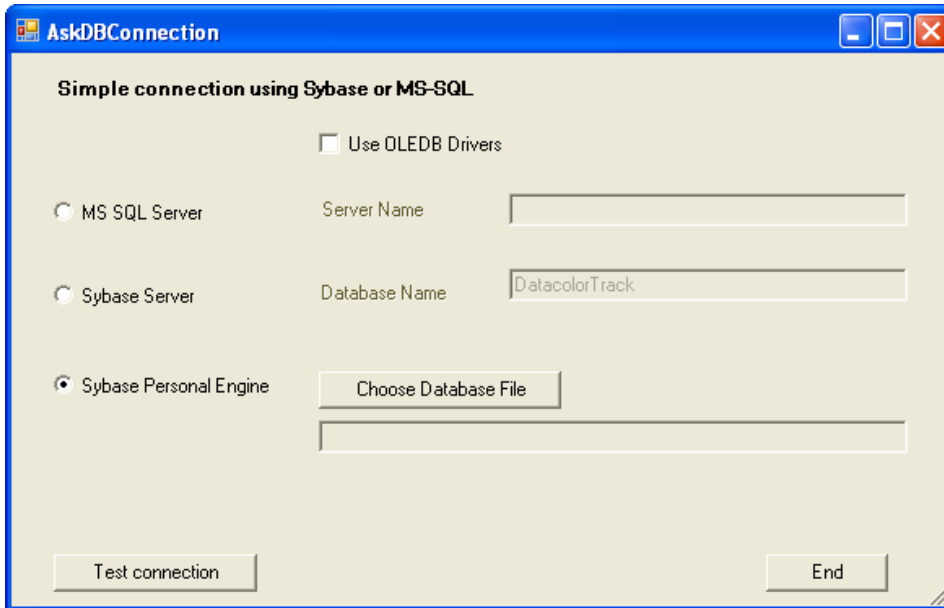
This is your Unlock Response Number. Enter this number into the Validation Screen on your computer.

Tip: You can copy this number on the clipboard and paste it into the Validation Screen.

After you have entered the Unlock Response Number into the Validation Screen, your software is validated. You can validate additional programs by selecting the Validate Another option

7 Starting Datacolor TRACK 1.4 the 1st time

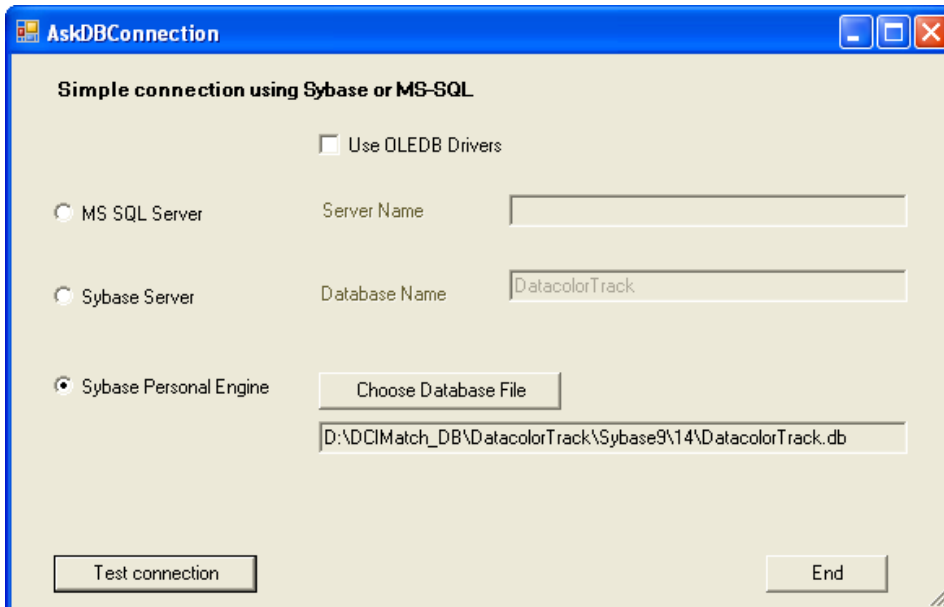
If Datacolor TRACK 1.4 starts the 1st time the 'AskConnection' dialog opens.



Select the type of connection you will use:

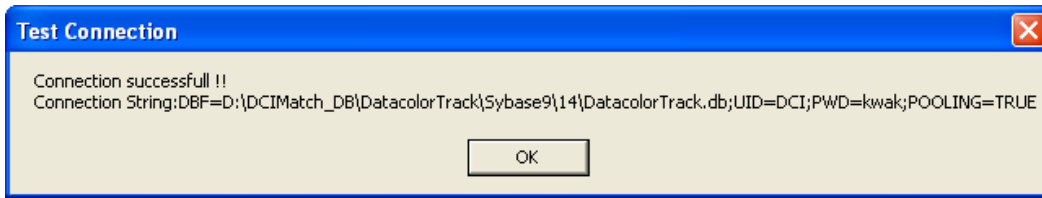
7.1 Sybase Personal engine:

Click on 'Choose Database File' and select the database file



(DatacolorTrack.db on the disk Default location C:\Program Files\Datacolor\database)

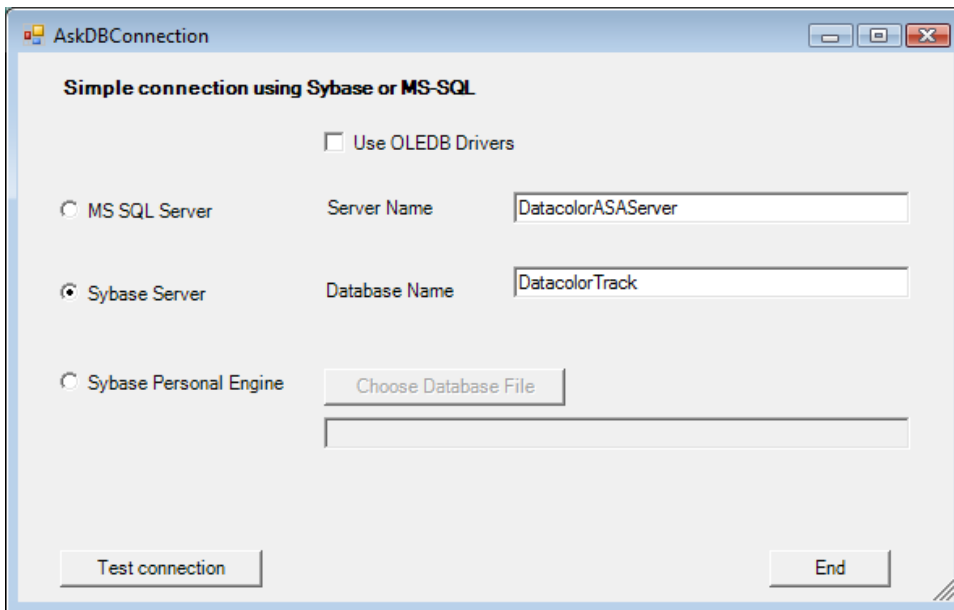
Click on 'Test connection' to check if it can be connected to the database



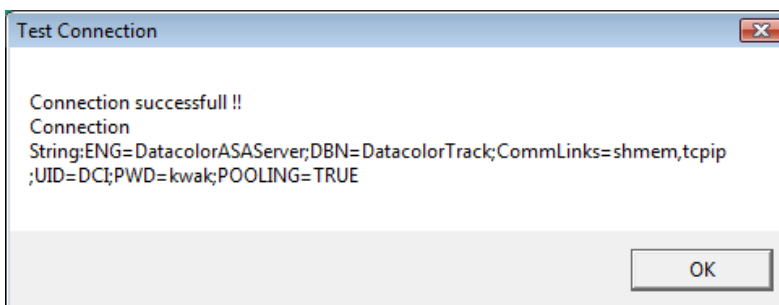
7.2 Sybase Server:



Note: A Sybase service is created under Windows Vista by default. You must type in **DatacolorASAServer** as server name



Select 'Sybase Server', type in Server Name and Database name to work with the Sybase server. Click on 'Test connection' to check if it can be connected to the database.



A file - TrackDBConnection.txt - with the connection string is stored

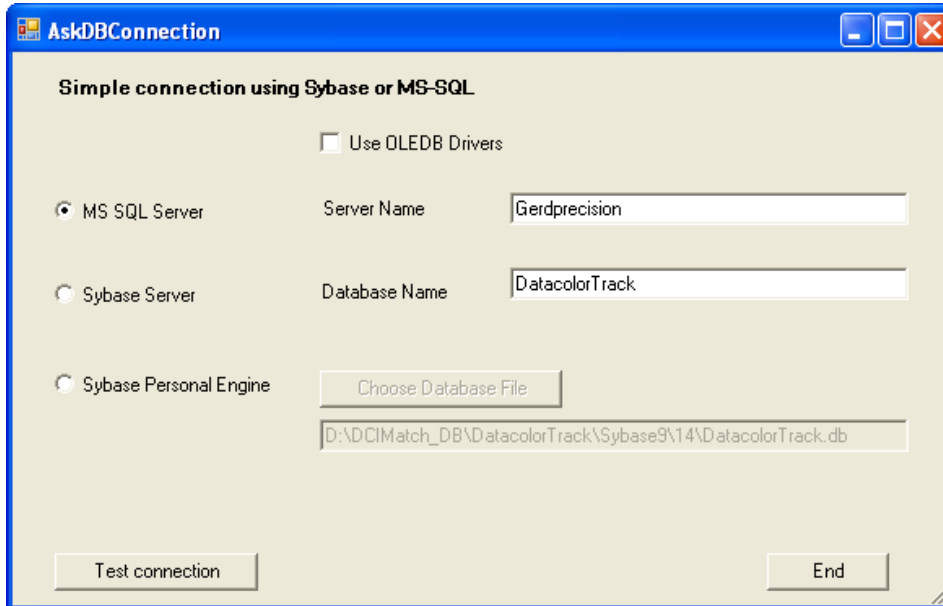
on **Vista** systems in folder:

C:\ProgramData\Datacolor

on **Windows XP** systems it is in folder:

C:\Documents and Settings\All Users\Datacolor

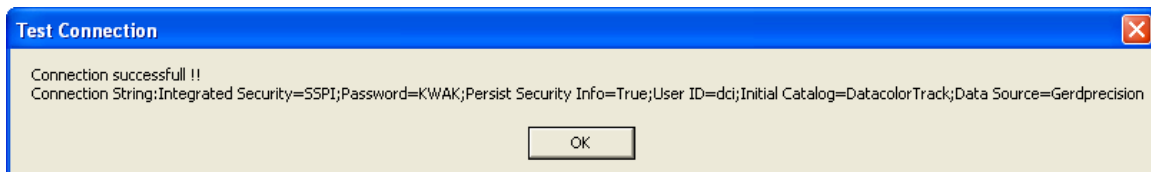
7.3 MS SQL Server:



The 'AskDBConnection' dialog box has a blue title bar with the text 'AskDBConnection' and standard window controls. The main area is titled 'Simple connection using Sybase or MS-SQL'. It contains a checkbox 'Use OLEDB Drivers' which is unchecked. Below this are three radio button options: 'MS SQL Server' (selected), 'Sybase Server', and 'Sybase Personal Engine'. To the right of 'MS SQL Server' is a text field for 'Server Name' containing 'Gerdprecision'. To the right of 'Sybase Server' is a text field for 'Database Name' containing 'DatacolorTrack'. To the right of 'Sybase Personal Engine' is a 'Choose Database File' button and a text field containing the file path 'D:\DCIMatch_DB\DatacolorTrack\Sybase9\14\DatacolorTrack.db'. At the bottom are two buttons: 'Test connection' and 'End'.

Select 'MS SQL Server', type in Server Name and Database name to work with the Sybase server.

Click on 'Test connection' to check if it can be connected to the database.



The 'Test Connection' dialog box has a blue title bar with the text 'Test Connection' and a close button. The main area contains the text 'Connection successfull !!' and a long connection string: 'Connection String: Integrated Security=SSPI;Password=KWAK;Persist Security Info=True;User ID=dcj;Initial Catalog=DatacolorTrack;Data Source=Gerdprecision'. At the bottom is an 'OK' button.

7.4 Configuration of communication settings

Before using Datacolor TRACK, an e-mail account must be created in your e-mail system. This account should be dedicated to sending jobs to/from Datacolor TRACK.

Before you install the Datacolor TRACK Service you must fill in the communication settings. These settings are used by the Datacolor TRACK Service to poll for incoming emails and to send e-mail confirmations back to the sender. The settings have to be done in Datacolor TRACK because the service cannot be configured.

Start Datacolor TRACK and click on the page '**Configure**'.

| QTX_Field | Display_Field | Type | Fraction | ModificationDate | BelongsTo | Mandatory | DBCColumn | EmailAble |
|-------------------|-------------------|-------------|----------|----------------------|-----------|--------------------------|---------------|--------------------------|
| BAT_DATETIME | bat_datetime | datetime | | 2/26/2007 3:24:29 PM | 2 | <input type="checkbox"/> | DateTime001 | <input type="checkbox"/> |
| BAT_DCC_STATUS | bat_dcc_status | string | | 2/26/2007 3:24:29 PM | 2 | <input type="checkbox"/> | String000 | <input type="checkbox"/> |
| DCC_BATCHDATE | dcc_batchdate | datetime | | 2/26/2007 3:24:29 PM | 2 | <input type="checkbox"/> | DateTime000 | <input type="checkbox"/> |
| DCC_JOB_ATTACHEME | dcc_job_attacheme | long string | | 2/26/2007 3:24:42 PM | 1 | <input type="checkbox"/> | LongString000 | <input type="checkbox"/> |
| DCC_JOBDATE | dcc_jobdate | datetime | | 2/26/2007 3:24:29 PM | 1 | <input type="checkbox"/> | DateTime000 | <input type="checkbox"/> |
| DCC_JOBSTATUS | dcc_jobstatus | string | | 2/26/2007 3:24:29 PM | 1 | <input type="checkbox"/> | String000 | <input type="checkbox"/> |

| Data Type | Job | Batch |
|------------------|-----|-------|
| string [130] | 2 | 1 |
| long string [15] | 0 | 0 |
| datetime [15] | 1 | 2 |
| number [40] | 0 | 0 |

Click now the "Communication Setup..." button.

Communication Setup

☒ Settings for Service Sender E-mail Address: Mail Polling Interval [min]:

Mail Protocol

☐ MAPI ☒ POP3/SMTP

POP3 Server: User: Password:

SMTP Server: User: Password:

Send specifications

Available fields: ☐ Used First Button ☐ Used Second Button ☐ Used Third Button

Job: Batch: Name: Name: Name:

Job.dcc_job_attachment Job.dcc_jobdate Job.dcc_jobstatus

Accounts **Contacts**

Name Address Name Address

- Check the **"Settings for Service"**
- Fill in the **POP3** server name, user and password
- Fill in the **SMTP** server name, user and password
- Set the **"Mail Polling Interval"**
- Click the **"Save"** button



NOTE

The Service does not work if these setting are not made.

8 Datacolor TRACK Service Installation

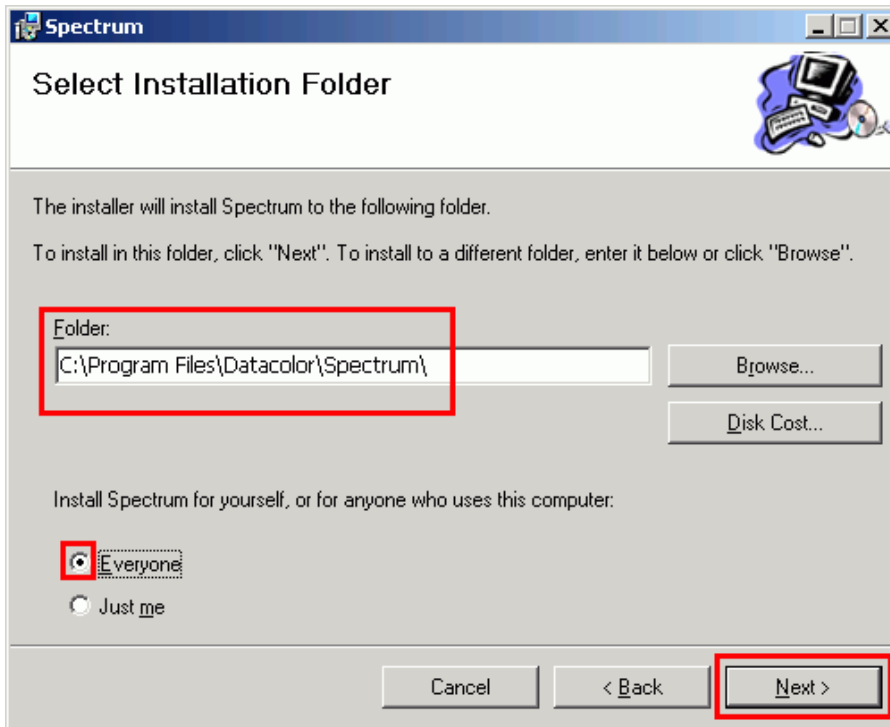
From the Datacolor TRACK installation menu select ***Install Datacolor TRACK Service V1.4.***



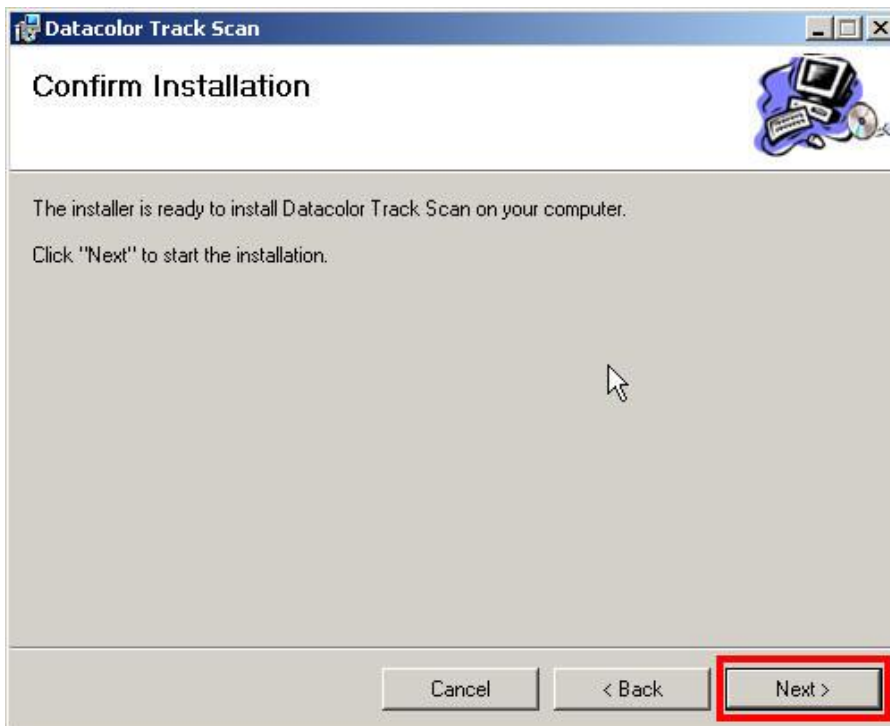
This will invoke the installation process, starting with the installation welcome screen.



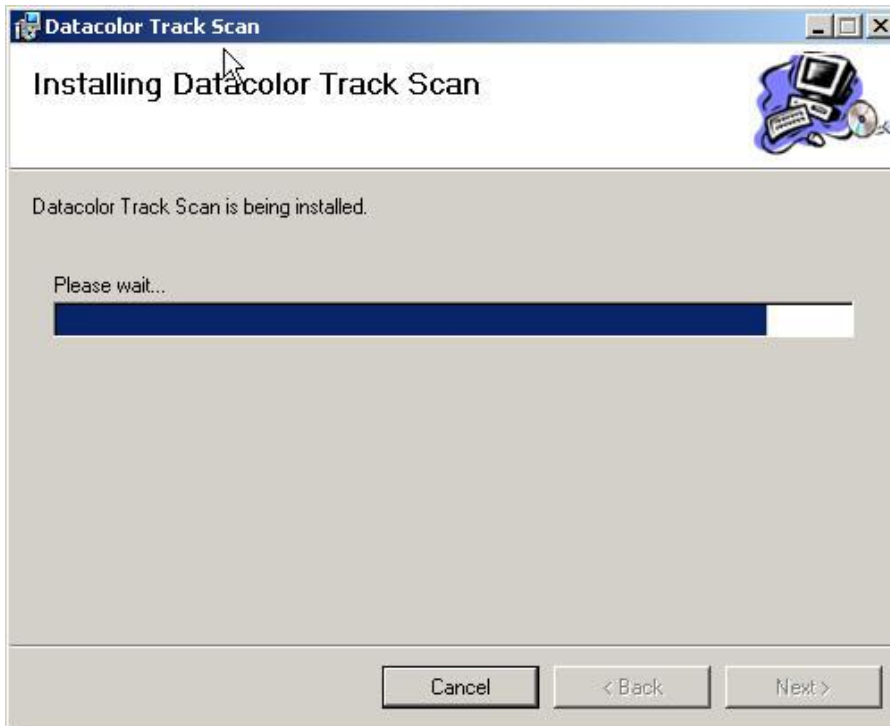
Press “**Next**” to proceed.



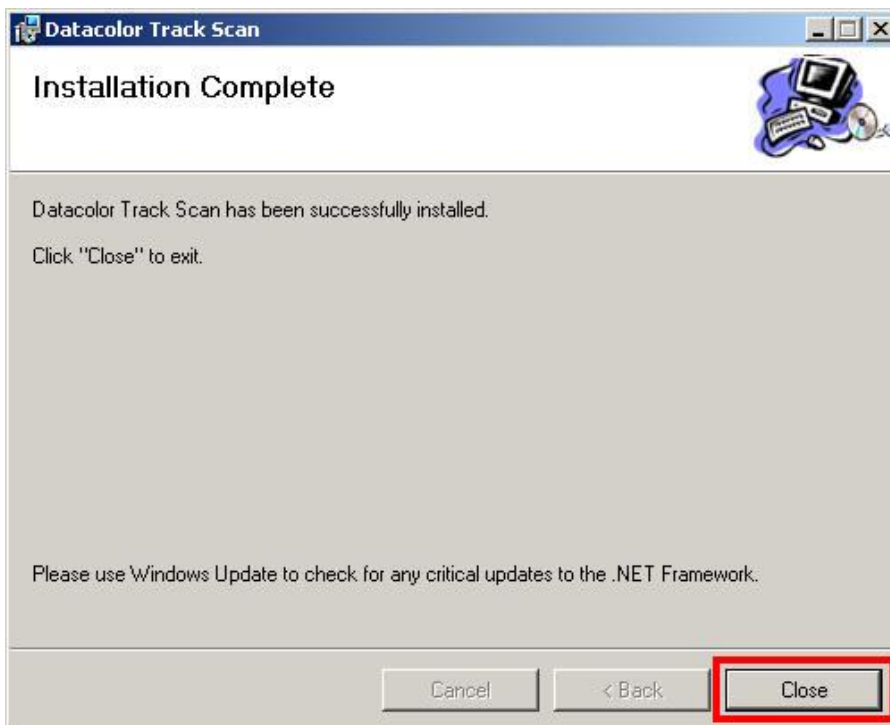
Define the installation target directory and access profile and press “**Next**” to proceed.



Press “**Next**” or change previous settings by pressing “**Back**”.



The completion screen confirms the successful installation. Press "**Close**".



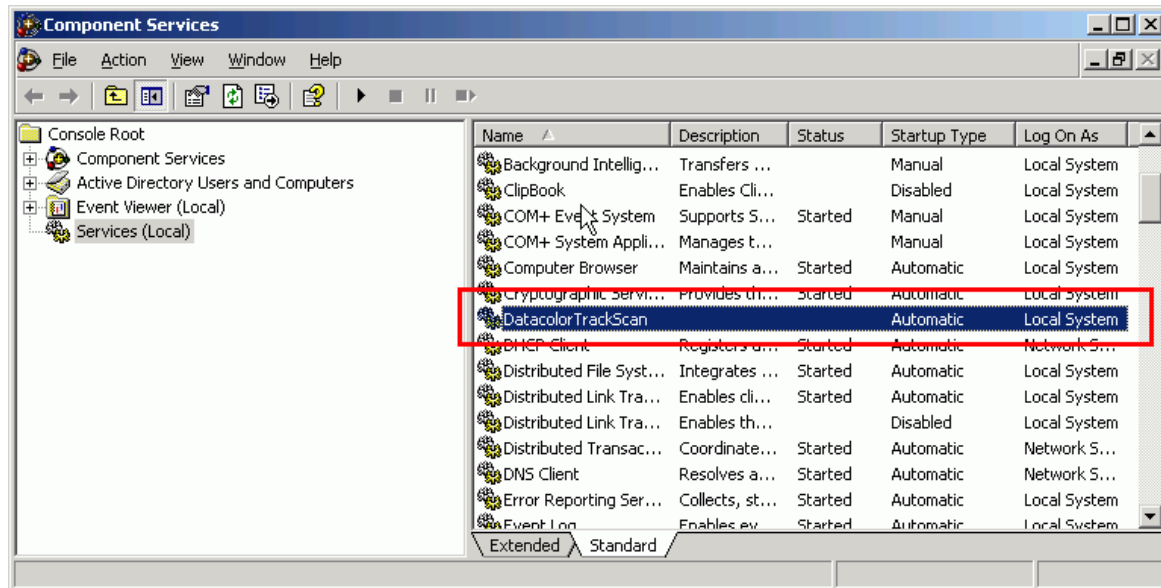
8.1 Starting the Datacolor TRACK Service

Once the **Datacolor TRACK Service** has been installed, it needs to be started. Open Window's Control Panel and navigate to

Control Panel->Administrative Tools->Component Services (Windows 2003 Server)

or

Control Panel->Administrative Tools-> Services (Windows e.g. XP)



Select **Services (Local)** in the treeview (left pane), then select the installed service, here **DatacolorTrackScan** in the List (right pane), and start it by either clicking on the **Start** button (▶), or by right-clicking on the selection and choose **Start** from the popup menu.

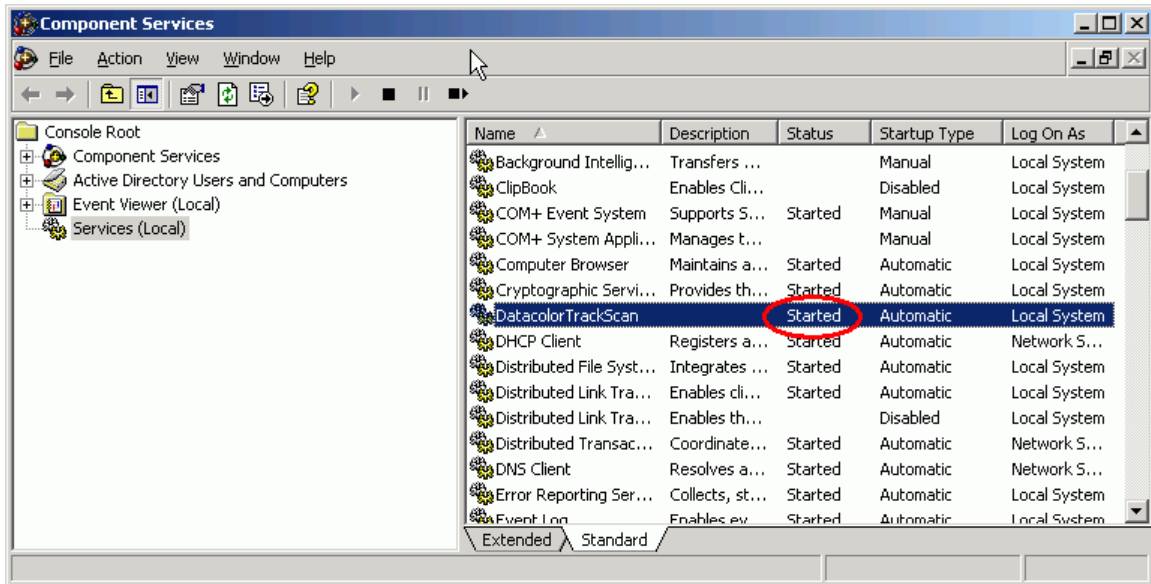
8.2 Stopping the Datacolor TRACK Service

To stop a service, open Window's Control Panel and navigate to

Control Panel->Administrative Tools->Component Services (Windows 2003 Server)

oder

Control Panel->Administrative Tools-> Services (Windows e.g. XP)



Select **Services (Local)** in the treeview (left pane), then select the installed service, here **DatacolorTrackScan** in the List (right pane), and start it by either clicking on the **Stop** button (■), or by right-clicking on the selection and choose **Stop** from the popup menu.