

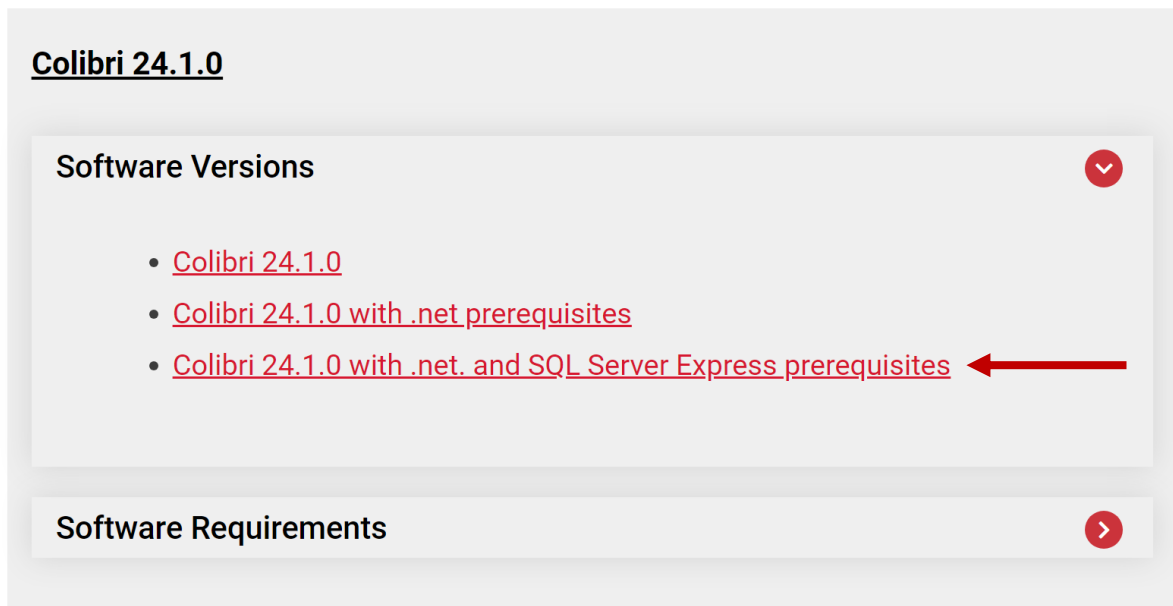
# Colibri 24.1.0 Installation

## Colibri installation

Visit the Datacolor website to download your Colibri installation package:

<https://www.datacolor.com/business-solutions/customer-support/colibri-software-downloads/>

Select the **Colibri 24.1.0** installation package **with prerequisites**:



Make sure to execute the installation package with Windows **administrative rights** and follow the installation wizard.

## License request and installation

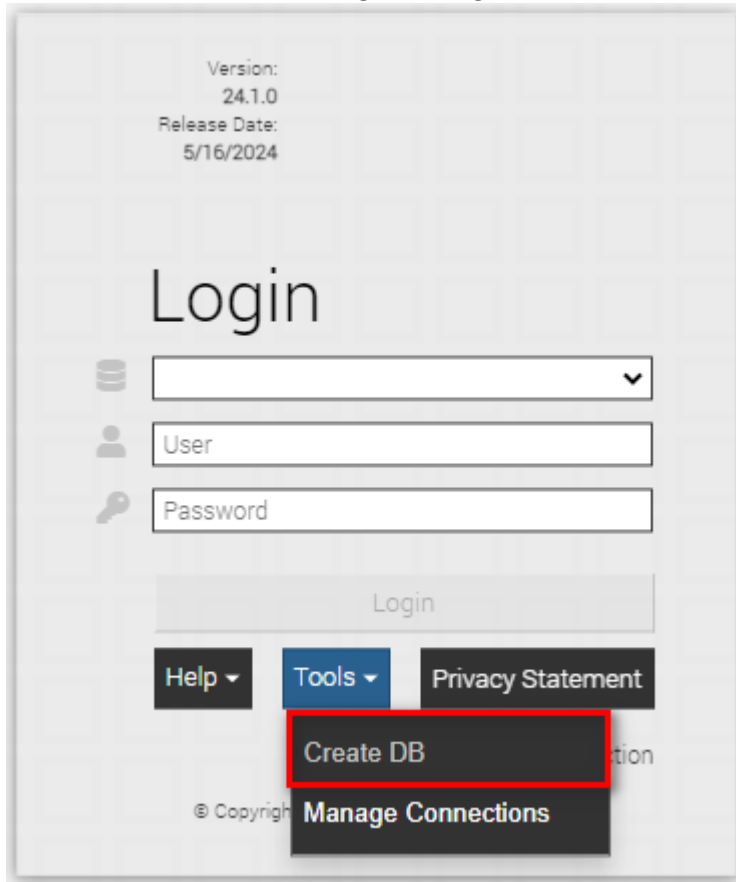
Once installed, you will be prompted to request for a license:

- try to start Colibri
- select to request a license
- fill in the form
- save as txt
- e-mail the registration text file to [support@matchmycolor.com](mailto:support@matchmycolor.com), explaining the reason for the new request, together with your **invoice number** if applicable.

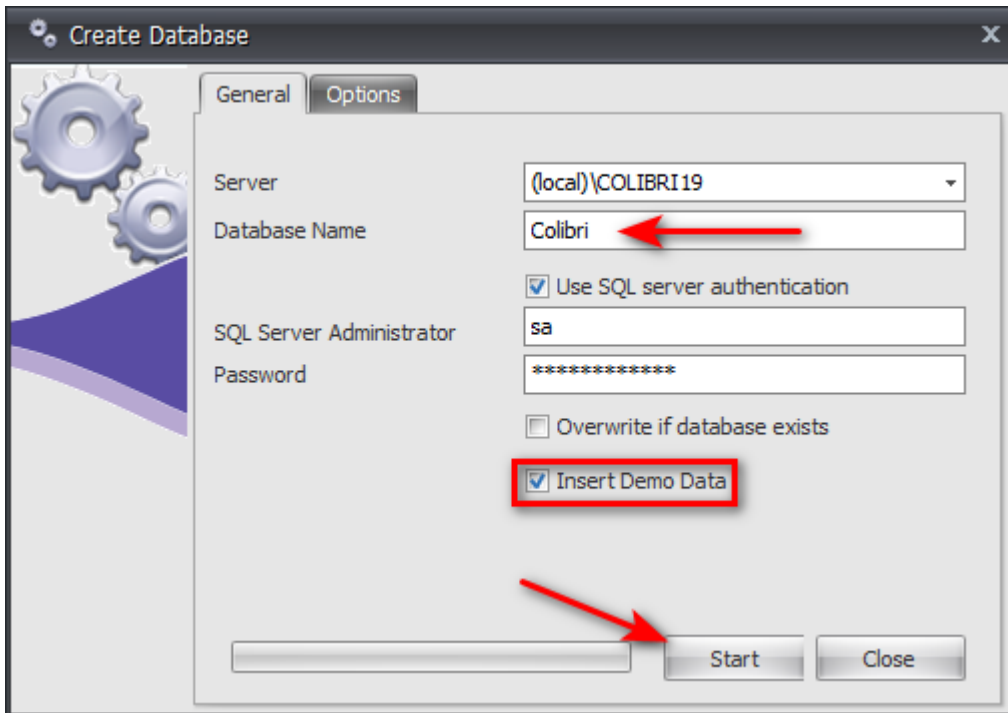
We will issue a license and send it back to you. Try again to start Colibri and select the license file you've been provided.

### Database creation

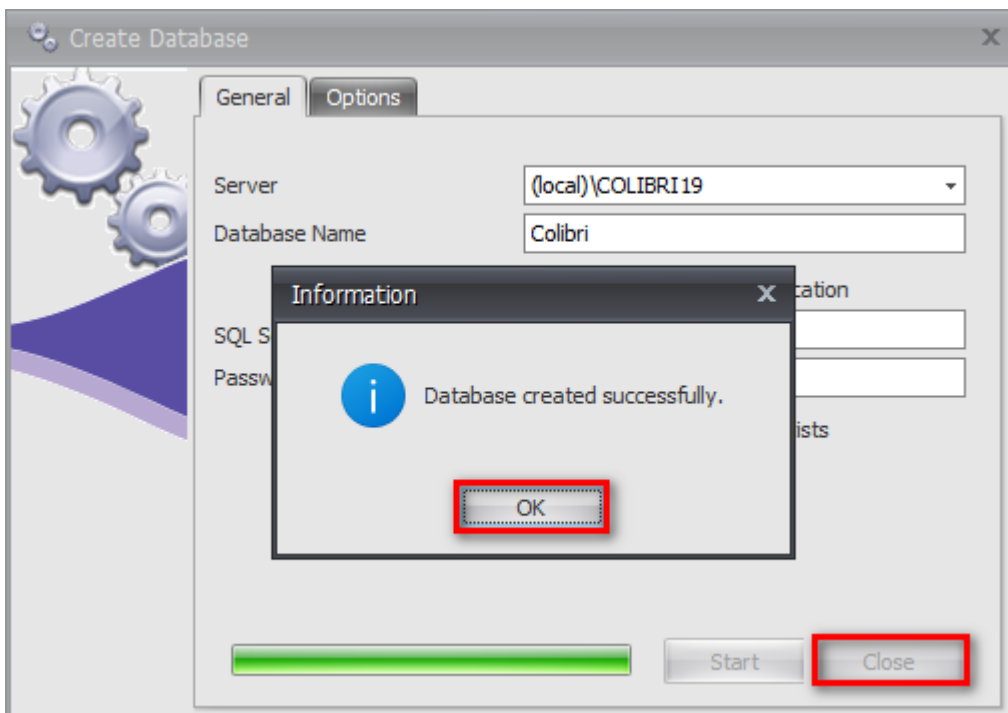
- Start Colibri and within the login form, go in Tools\Create database:



Input a database name, select to Insert Demo Data and Start:



Once the database created, close the database creation window:



Back to the login form, input the default login: Administrator / password:

Version:  
24.1.0  
Release Date:  
5/16/2024

# Login

Database: \\(local)\COLIBRI19\Colibri

Username: Administrator

Password: .....

**Login**

Help ▾ Tools ▾ Privacy Statement

Update Connection

© Copyright Datacolor, all rights reserved.

You are now connected to your Colibri database.