

# Datacolor® Match Textile

Smart Color Matching for Textiles



## Powerful and accurate color matching software

For color professionals in the textile industry, Datacolor® Match Textile provides enhanced functionality and greater ease of use. Optimize textile recipes based on your customer's needs and improve efficiencies with networked color management. Boost productivity and save time and money by streamlining your color development process with one complete solution backed by global, industry specific application support.

Proven cost reductions:

With its leading-edge Smart Match algorithms, Datacolor Match Textile offers superior first shot matches, reducing the need for correction. Additional benefits include:

- Faster throughput of lab requests
- Fewer lab dyeings
- Self-learning system that captures reality
- Up to 50% increase on first shot matches

## Datacolor Match Textile

### Streamline Color Development

Ensure accurate color throughout the dyeing process

Datacolor Match Textile significantly increases the accuracy of recipe calculation and speeds up the color matching process, resulting in improved productivity and lower costs.

Cost and quality optimized

Grouped formulation settings allow customers to easily optimize matching results, eliminate errors and ensure faster color approval.

### Increase Efficiency

Save time & money with easy-to-create recipe results

The SmartMatch algorithms offer superior first shot matches, reducing the need for corrections. This results in decreased raw material consumption and faster throughput

Intuitive access to tutorials and superior functionality

Improved user-interface and interactive tutorials offer increased productivity, reducing the learning curve.

---

### Ensure Consistency

Quickly address challenging lab requests

Gain valuable time and competitive advantage by quickly exchanging recipes and reflectance data using Datacolor Match Textile's recipe communication features.

Reduce corrections by working with process-related standards

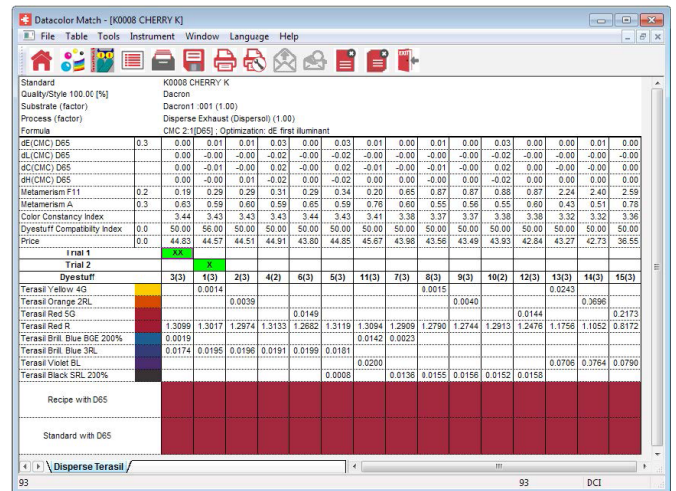
Shade variation that results from post-dyeing process can be accounted for by applying Offset data to the initial formulation. By applying Offset data to any given standard, matching the right target every time is assured.

## Datacolor Match Textile

### Key features

Match Textile's unique features and flexible configuration options enable the software to be tailored to meet each individual user's requirements.

- Intuitive user interface
- User-defined recipe status values
- Enhanced recipe exchange
- Customer-specific matching parameters
- Built-in history to track recipe quality
- Offset matching
- Color constancy optimization
- Multi-illuminant match for reduced metamerism
- Optimize dH for single/multiple illuminants
- Standard and Smart Match recipes in parallel
- Detailed tutorials and informative Tips of the Day
- Dye compatibility management to ensure use of preferred dyes
- 3-D graphics to support dyestuff selection



### Datacolor Match Textile Essentials

A powerful entry level formulation and correction software designed to bring confidence and speed to those working in the textile laboratory. Each Essentials license includes one license of Datacolor Tools Plus, our premium, full featured color quality control software.

### Datacolor Match Textile Standard

A mid-level Datacolor Match Textile and Datacolor Tools package with exclusive Datacolor SmartMatch Expert system technology, takes full advantage of past dyeing experiences and self-adjusts for changes in dye behaviors in combination with other dyes, changes in the dyeing processes, changes in the substrates, and changes due to other factors in dyeing for laboratory and production.

### Datacolor Match Textile Plus

Our premium, full-featured software offers the ability to create complex lab recipes including all chemicals, chemical tables, and procedures to prepare a "ready to use" printout for the laboratory. It also enables users to specify a pair of dyes that must be used together at a fixed ratio to each other used in the calculation of the new recipe, ability to sort the recipe tables for cost, color difference, color consistency and other parameters and to match multiple colors (batch matching) with preset matching criteria. Datacolor Tools Plus is included in this feature-rich offering.

## Datacolor Match Textile

### Dyeset preparation functions

- Chemicals stored during dyeset preparation
- Up to 16 levels for dyestuff characterization
- Ingredient compatibility manager
- Dyeset quality analysis

### Superior recipe correction functions

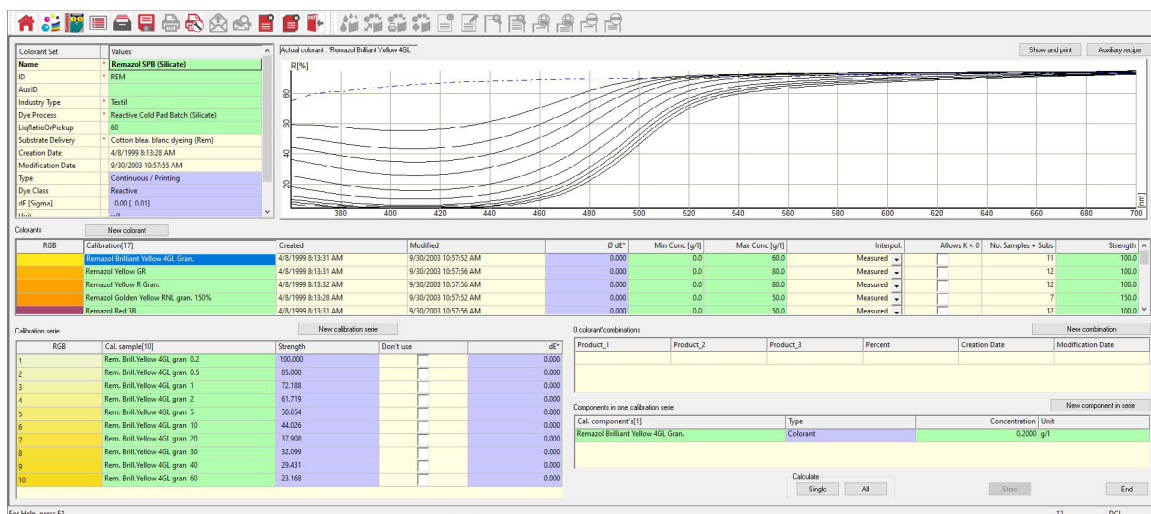
- Correct one or all parts of a blended fabric
- Colorimetric analysis for corrective decisions
- Shade correction based on minimized dH
- Offset standards for process-dependent recipe correction

### Advanced formulation function

- Create recipes for exhaust, continuous and pad batch dyeing, printing and fiber blending
- Advanced recipe history, data sorting and search capabilities
- Multiple recipe optimization options including weight of dH and color constancy
- Customer-dependent settings for match prediction can be stored
- User-defined recipe status and location
- Export features including theoretical curves and export to MS-EXCEL
- Offset matching for any standard

### Optional features

- Batch matching and fast correction
- Manual recipe input
- Storage and use of additional effects (substrate, etc.)
- Advanced Smart Match with automated housekeeping
- Multi-illuminant and multi-color match
- Create dyestuff groups based on dyestuff technical data
- Work with fixed dyestuff relationships and concentration limits
- Complete lab dyeing procedures



*"Match Textile offers advanced colorant set preparation for a variety of textile coloration methods ranging from exhaust, continuous and pad batch dyeing to printing and fiber blending"*

## Datacolor Match Textile

### Software Maintenance Support

Enroll your Match Textile on a Software Maintenance Support plan that ensures you have ongoing access to the latest software updates, expert assistance via phone and email, and compatibility with the newest operating systems. Stay current, maximize reliability, and maintain peak efficiency with Datacolor's comprehensive support.

### System requirements

Component	Recommended
Operating System	Windows 10 and 11 (Pro or Enterprise Only)
Required Framework	Microsoft .NET Framework 4.7.2 or higher
Processor	Dual Core or higher (See Windows Operating System Requirements)
Memory	8 GB or more
Hard drive	500 GB
Display	1920x1080 - size of text only 100% supported
Graphic card	Graphic card supporting OpenGL 2.1
Connections	Serial, USB, Bluetooth or Ethernet (Depending on spectrophotometer model)
Server OS	Windows Server 2016, 2019, 2022
Additional Requirements	SQL Server 2012 to 2019
Internet Connection	Internet access recommended for software updates and license activation

Note: Lower system configurations may limit performance, data capacity and operation of some features. Faster processor, more memory and faster hard drives will significantly enhance performance.

## Datacolor Match Textile

For more information on specific terminology, please visit our [glossary](#).

### Software Specifications

Feature	Match Textile Essentials	Match Textile Standard	Match Textile Plus
Export features including theoretical curves and export to MS-EXCEL	✓	✓	✓
Integration to Production Management	✓	✓	✓
QC Package	✓	✓	✓
Shade Sorting (555 Sort and DC Sort)	✓	✓	✓
Detailed tutorials and informative Tips of the Day	✓	✓	✓
Intuitive user interface	✓	✓	✓
Additional effects for substrate / process deviations	x	✓	✓
Advanced Data View Designer	x	x	✓
Advanced Lab Process	x	x	✓
Dyestuff Management			
3-D graphics to support dyestuff selection	✓	✓	✓
Chemicals stored during dyeset preparation	✓	✓	✓
Dye compatibility management to ensure use of preferred dyes	✓	✓	✓
Dyeset quality analysis	✓	✓	✓
Ingredient compatibility manager	✓	✓	✓
Up to 16 levels for dyestuff characterization	✓	✓	✓
Min/Max Dyestuffs Limits	x	✓	✓
Automatic build-up of Dyestuff Groups	x	x	✓
Fixed Relations of Dyestuffs Pairs	x	x	✓
Matching			
Color constancy optimization	✓	✓	✓
Customer-dependent settings for match prediction can be stored	✓	✓	✓
Customer-specific matching parameters	✓	✓	✓
Offset matching	✓	✓	✓

# Datacolor Match Textile

Feature	Match Textile Essentials	Match Textile Standard	Match Textile Plus
Advanced SmartMatch	✗	✓	✓
Multicolor Match	✗	✓	✓
Multi-illuminant match for reduced metamerism	✗	✓	✓
Batch matching and speed matching for a range of stds	✗	✗	✓
Recipe Correction			
Colorimetric analysis for corrective decisions	✓	✓	✓
Correct one or all parts of a blended fabric	✓	✓	✓
Fast Correction	✓	✓	✓
Shade correction based on minimized dH	✓	✓	✓
Matching			
Advanced recipe history, data sorting and search capabilities	✓	✓	✓
Built-in history to track recipe quality	✓	✓	✓
Create recipes for exhaust, continuous and pad batch dyeing, printing and fiber blending	✓	✓	✓
Enhanced recipe exchange	✓	✓	✓
Multiple recipe optimization options including weight of dH and color constancy	✓	✓	✓
Offset standards for process-dependent recipe correction	✓	✓	✓
Recipe & Corection Optimization on dH for single/multiple illuminants	✓	✓	✓
Standard and Smart Match recipes in parallel	✓	✓	✓
User-defined recipe status and location	✓	✓	✓
User-defined recipe status values	✓	✓	✓
Manual Recipe Input	✗	✓	✓
Resorting of Recipe Tables	✗	✗	✓
Sensitivity Values	✗	✗	✓

For more information, please visit [www.datacolor.com](http://www.datacolor.com)