

# **Datacolor SORT Installation Guide**

## **Datacolor SORT Stand-Alone Installation Guide**

(June, 2024)

All efforts have been made to ensure the accuracy of the information presented in this format. However, should any errors be detected, Datacolor appreciates your efforts to notify us of these oversights.

Changes are periodically made to this information and are incorporated into forthcoming versions. Datacolor reserves the right to make improvements and/or changes in the product(s) and/or program(s) described in this material at any time.

© 2024 Datacolor. Datacolor, SPECTRUM and other Datacolor product trademarks are the property of Datacolor.

Microsoft and Windows are either registered trademarks of Microsoft Corporation in the United States and/or other countries.

To obtain information on local agents, sales or support contact, visit our website at <https://www.datacolor.com/contact/business-solutions-contacts/>.

**Support Questions?** If you need help with a Datacolor product, please contact support at: <http://industrial.datacolor.com/support>.

**Committed to Excellence. Dedicated to Quality. Certified to ISO 9001 in Manufacturing Centers Worldwide.**

# Table of Content

- 1 INSTALLATION OVERVIEW.....4**
  - 1.1 SYSTEM REQUIREMENTS.....4
  - 1.2 DATACOLOR SORT INSTALLATION SET .....4
  - 1.3 SYBASE INSTALLATION OPTIONS.....5
- 2 INSTALLING SORT ON A CLEAN SYSTEM (NON-UPGRADE CASE).....6**
  - 2.1 STANDALONE SYSTEM .....6
  - 2.2 LOCAL AREA NETWORK (LAN) .....6
    - 2.2.1 *Server Installation* .....6
    - 2.2.2 *Client Installation*.....6
- 3 STEP-BY-STEP INSTALLATION OF SORT (STANDALONE SYSTEM) .....7**

## 1 Installation Overview

This document describes the installation of Datacolor Software to your computer's hard disk. Before you begin the installation, you should have all ISO images, and Microsoft Windows\* should be properly installed on your computer. Have a valid license activation code with a maintenance date greater than the release date of the installer. For Offline and Local License Server activation and installation, please refer to their respective installation instructions.

### 1.1 System Requirements

Follow the link below for information on the system requirements:

<https://www.datacolor.com/business-solutions/downloads>

**Please contact Datacolor for Terminal Server hardware and software requirements.**

### 1.2 Datacolor SORT Installation set

There are 2 ISO images for installing Sybase and SORT.

1. Sybase ISO image
2. SORT Application ISO image

**Important, Before You Begin!** *You must have Administrator Rights to install this software and you must have installed Sybase first!*

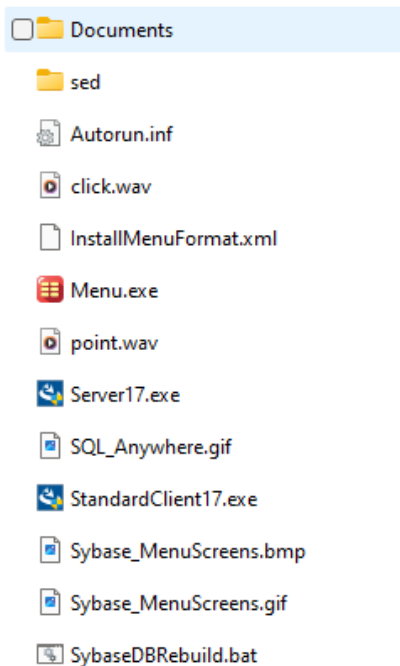
### 1.3 Sybase Installation Options

There are 2 different Sybase Installation options on the ISO image:

1. **Standard Client Installation** – This is a silent install that will not ask which components to install or ask about the number of licensed users. This should be used for all stand-alone PC systems as well as for client installations for PCs on a traditional LAN.
2. **Install Sybase Server** – This installation will ask which components to install and also allow you to set the number of licensed users. This should be used for the server installation on a traditional LAN and for a terminal server application.

Both of the above installations are basically the same. The only difference is the Standard Client is a silent install while the Sybase Server install asks questions. For example, the Server Install will allow you to set the number of users.

#### Sybase ISO Image – Directory Structure



## 2 Installing SORT on a Clean System (non-upgrade case)

### 2.1 Standalone System

This is a dedicated, single-user system that does not share the database. The Sybase database server and the Datacolor applications software is installed on the same system. To install on a standalone system, follow these steps:

1. Mount the **Sybase ISO image**, select **Standard Client Installation** from the installation menu and follow the prompts. For step-by-step instructions, see *the document SybaseInstallationGuide\_REV\_14.pdf*.
2. After Sybase has been installed, mount the **SORT ISO image** and select the option to install Datacolor Sort.

### 2.2 Local Area Network (LAN)

This is a group of systems that share a common database. The Datacolor application software is installed on each client machine, and the database is located on a server that can be accessed by all of the client computers.

#### 2.2.1 Server Installation

This installation procedure is performed on the server computer.

1. Mount the **Sybase ISO image**, select **Install Sybase Server** from the installation menu and follow the prompts. For step-by-step instructions see *the document SybaseInstallationGuide\_REV\_14.pdf*.
2. Create a **Windows database service** for the Sybase Adaptive Server program. For step-by-step instructions, see also *Appendix, Sybase Database Service in SybaseInstallationGuide\_REV\_14.pdf*.

#### 2.2.2 Client Installation

This installation procedure must be repeated for each client computer on the network.

1. Mount the **Sybase ISO image**, select **Standard Client Installation** from the installation menu and follow the prompts. For step-by-step instructions, see also *Detailed Installation Instructions, Sybase Client Installation in SybaseInstallationGuide\_REV\_14.pdf*.
2. Install **SORT** and **TOOLS** on each client computer. For step-by-step instructions, see also the Installation Instructions for the specific application.
3. Modify the **ODBC connection** on each client computer. This directs the program to look for the databases on the network. For step-by-step instructions, see also *Appendix, ODBC Connection in SybaseInstallationGuide\_REV\_14.pdf*.

## **3 STEP-By-Step installation of SORT (Standalone System)**

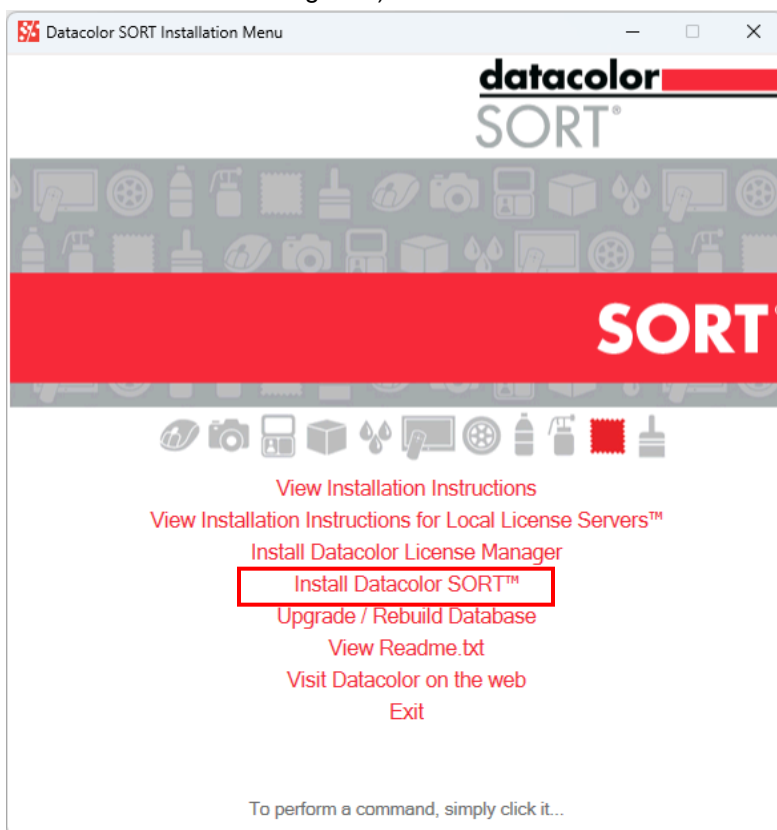
To install your software, do the following:

1. Start Windows.
2. Mount the product ISO image and run the Menu.exe.
3. The main installation menu should appear.

If you do not see the menu window, do the following:

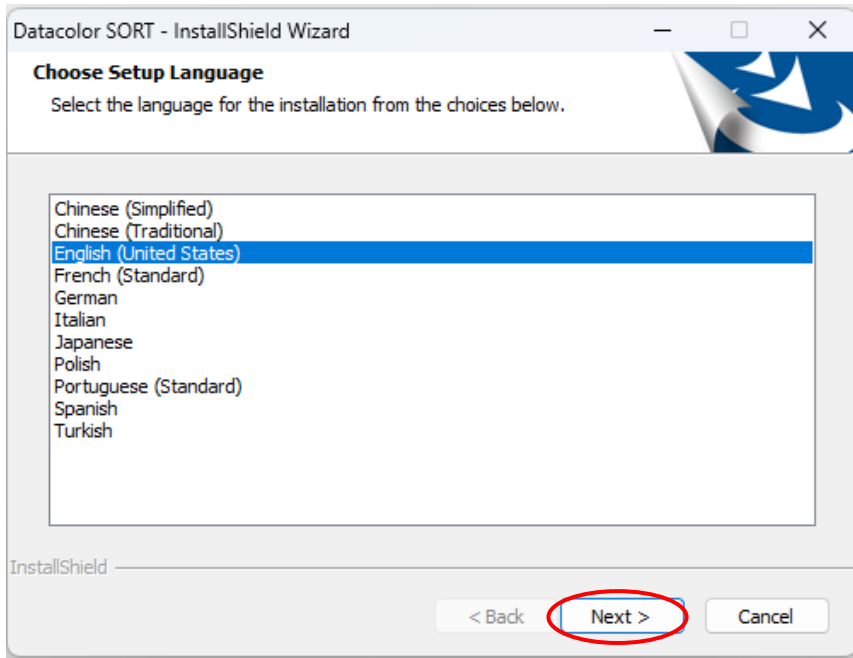
Click the **Start** button From the start menu, choose **Run...**

in the Run dialog box, type **D: MENU** and click OK. (If your ISO image is a letter other than D, use that letter in the dialog box.)

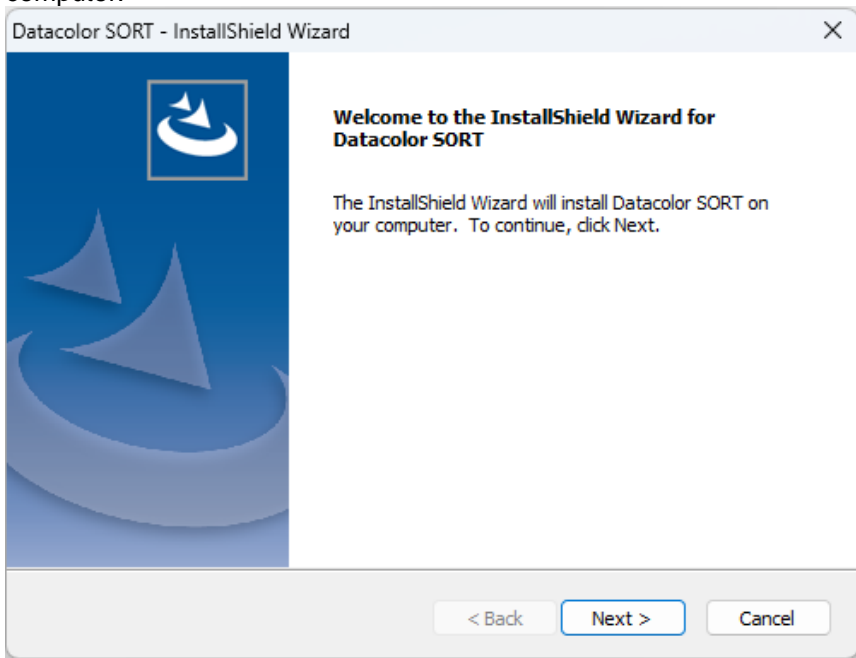


When the Main Installation Menu is displayed, choose “**Install Datacolor Sort**” The Datacolor SORT installation will guide you through installing Datacolor SORT on your computer

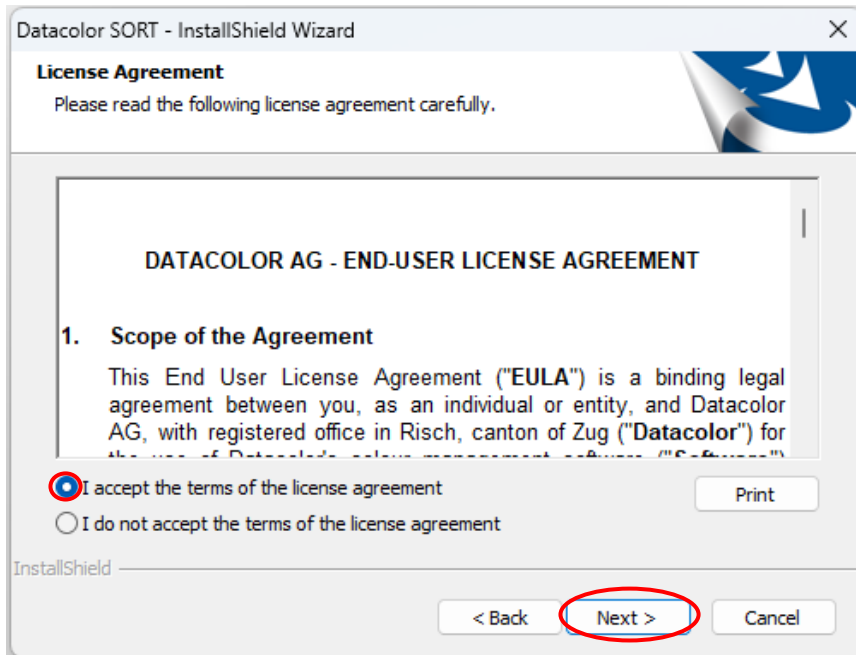
Select a language from the list box.(Language include Chinese (simplified), Chinese (traditional), English, French (standard), German, Italian, Japanese, Portuguese (standard) and Spanish.)



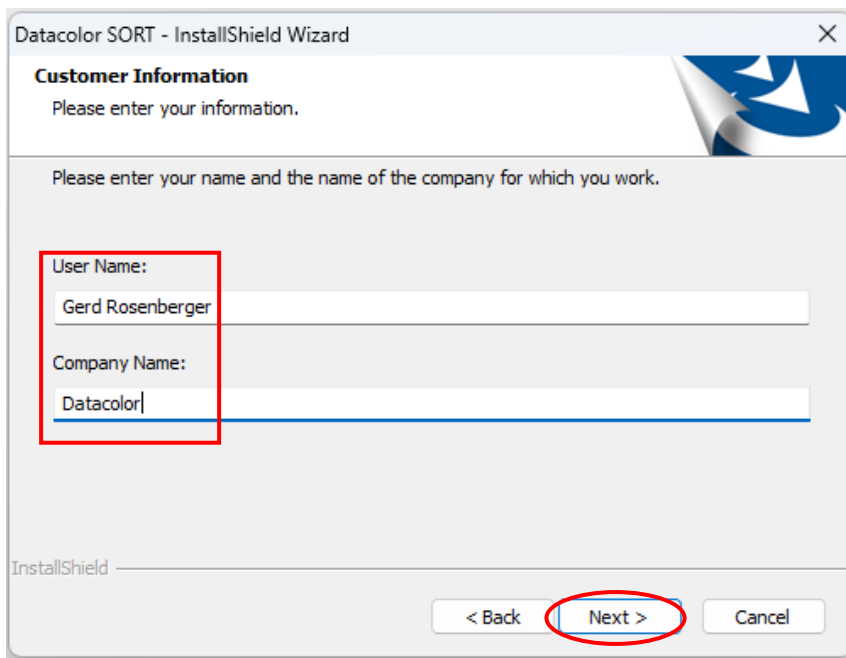
Click "**Next**". The installation wizard will start - follow the prompts to install Datacolor SORT on your computer.

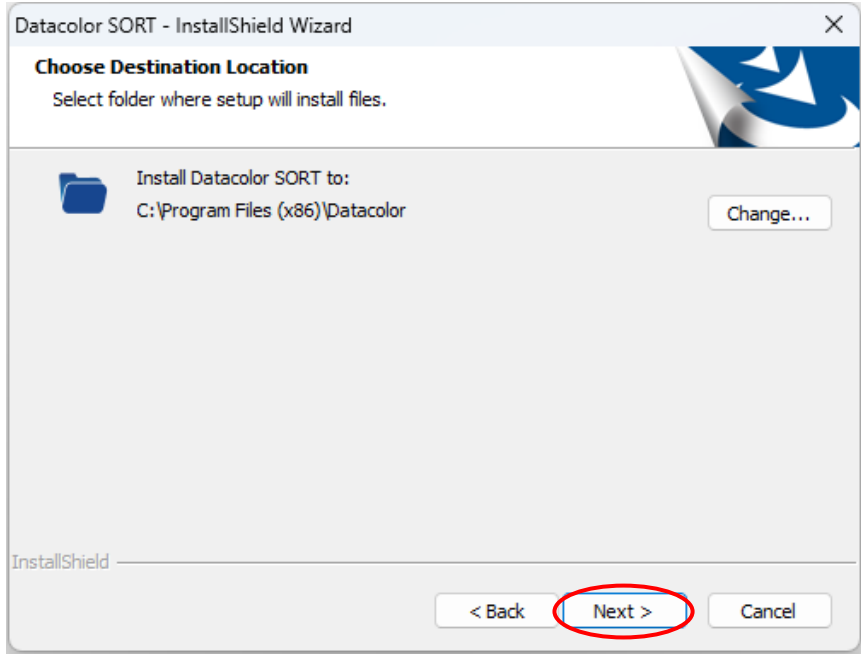




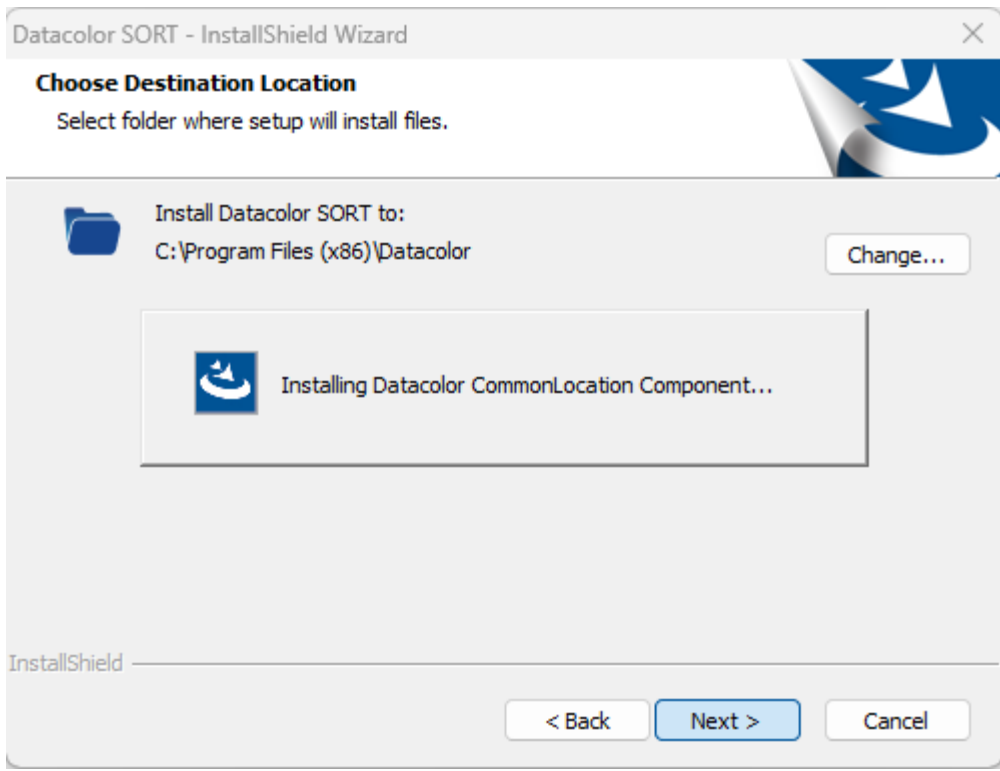


Select the acceptance radio button and click the **Next** button to proceed.

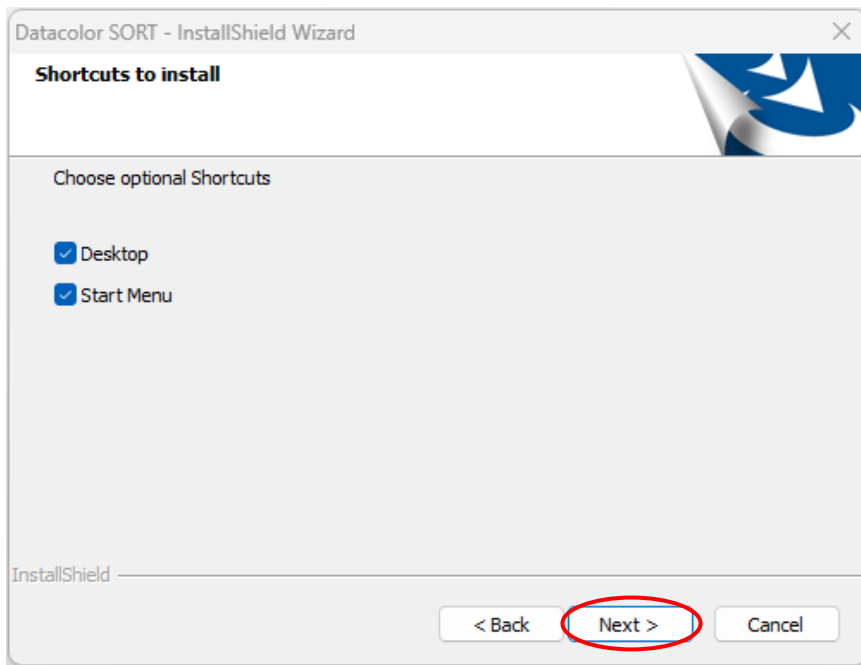




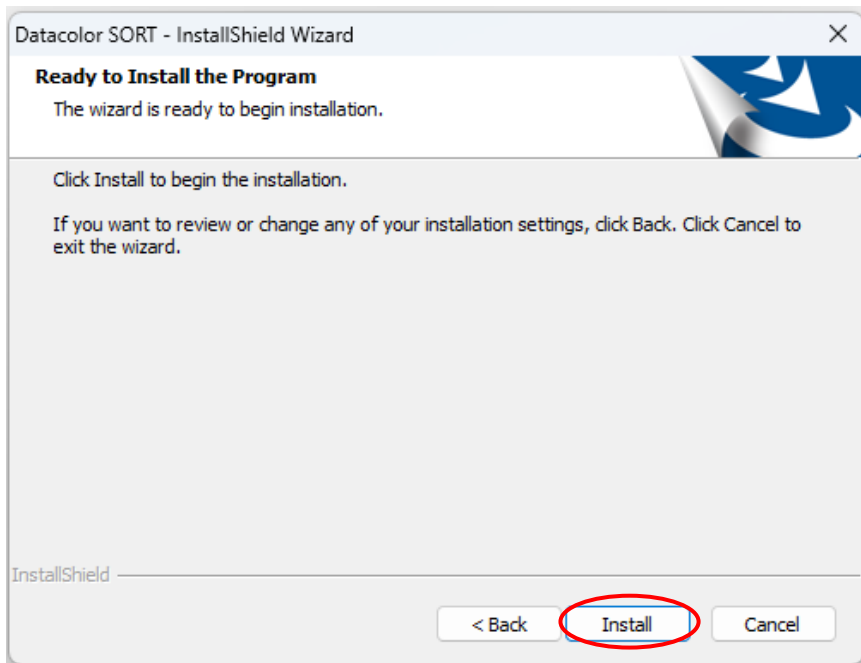
Click "**Next**" to select default installation folder. Normal default is C:\Program Files\Datacolor



At default, the installation will put Datacolor SORT icon on your desktop and a shortcut to start program menu.

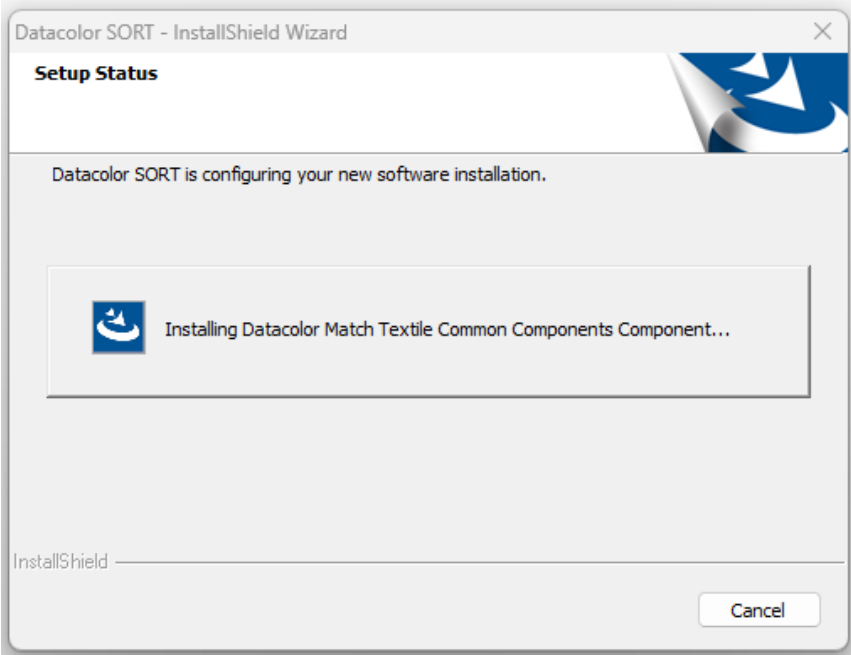
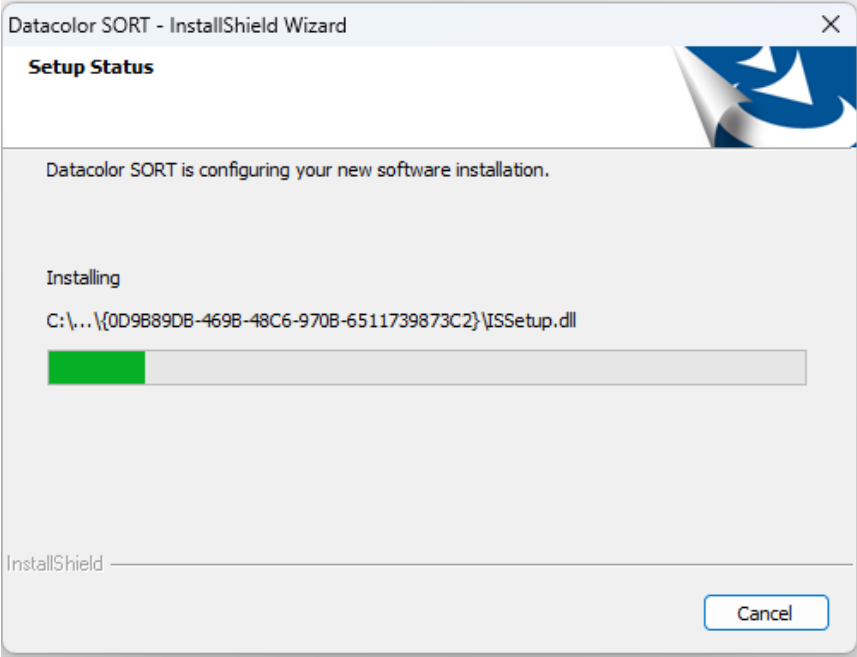


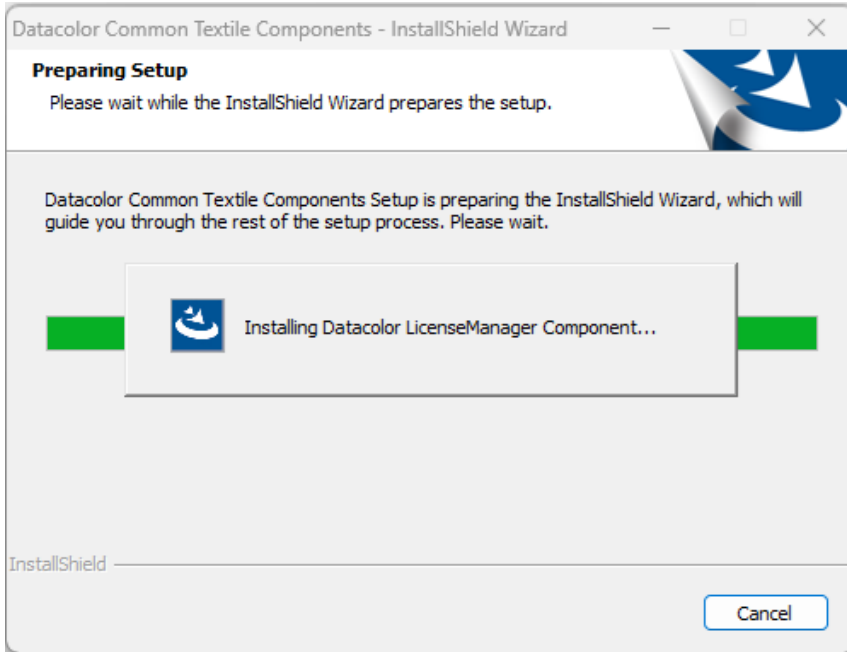
Click **Next** to continue the installation.



Click **Install** to transfer the data

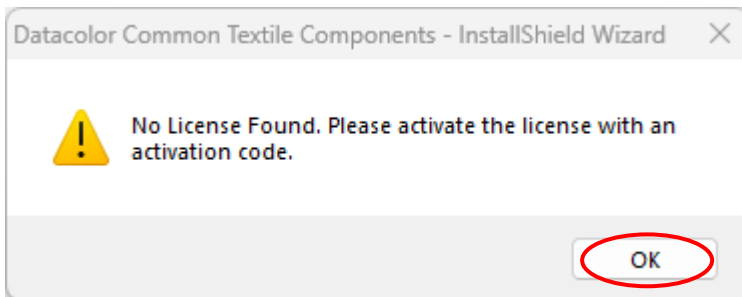
Setup starts transferring the files





The 'LicenseManager' is installed.

The software will detect that there is no license found.

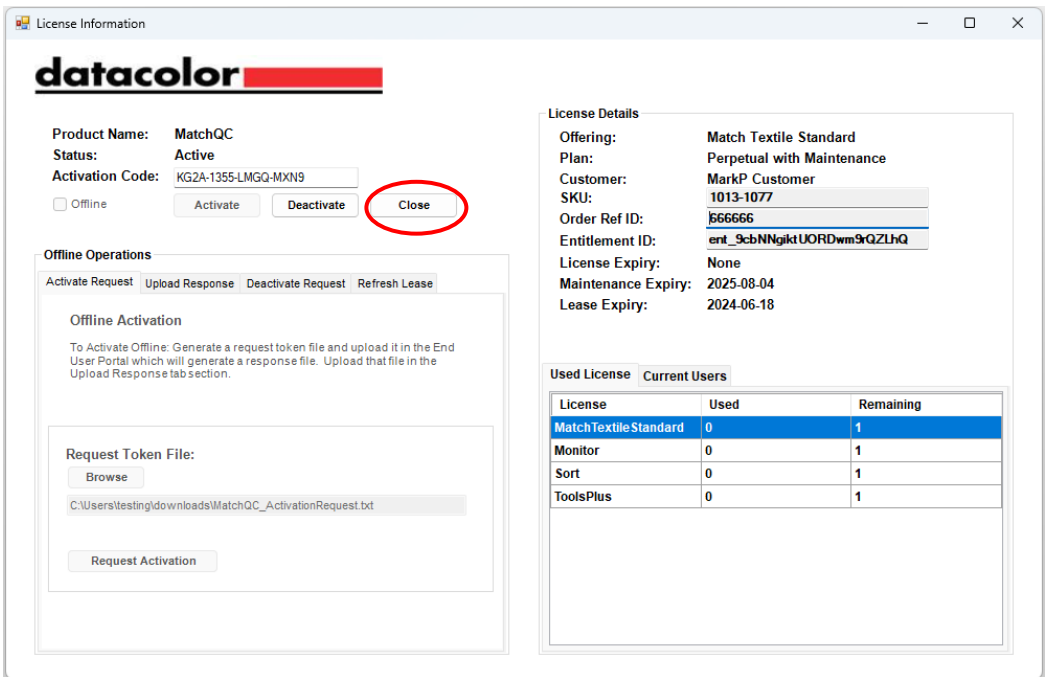


\* If a previous valid license is found in your system, you will not be prompted to activate the license.

Click OK and the License Activation window is displayed.

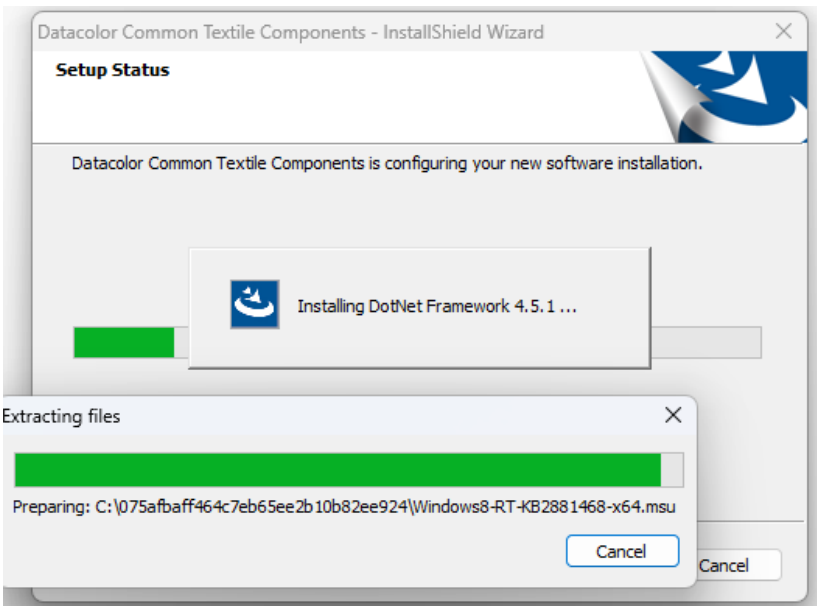


Enter an Activation Code and click "Activate".

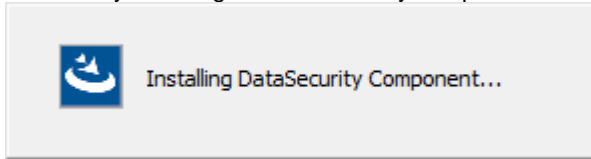


Click **Close** to continue.

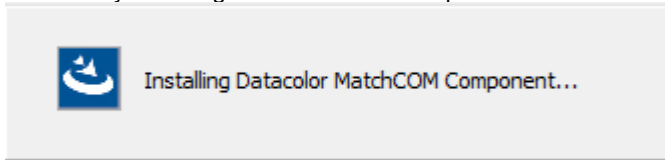
It will then install the DotNet Framework:



followed by installing the DataSecurity component:



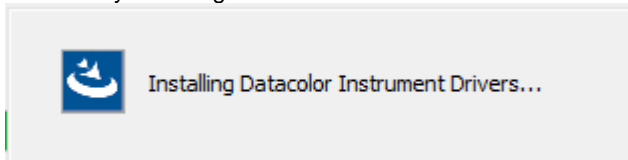
followed by installing the MatchCOM component:



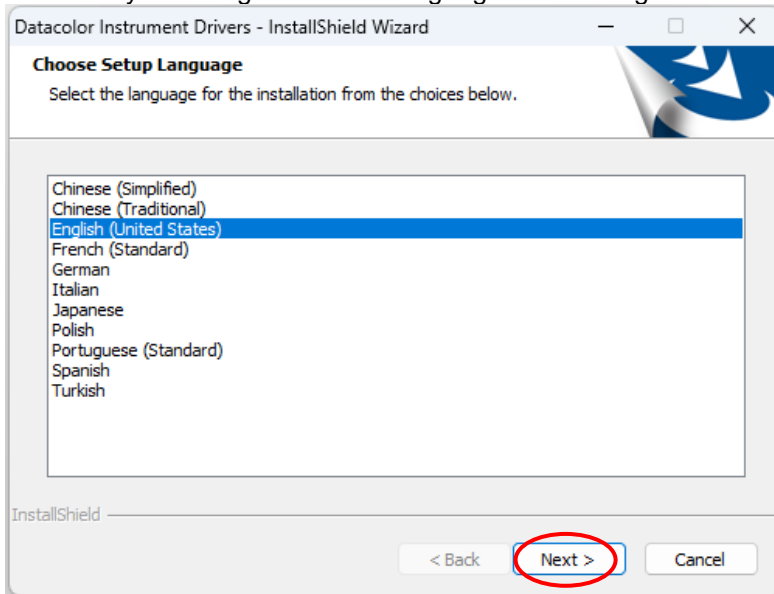
followed by installing the Envision component:

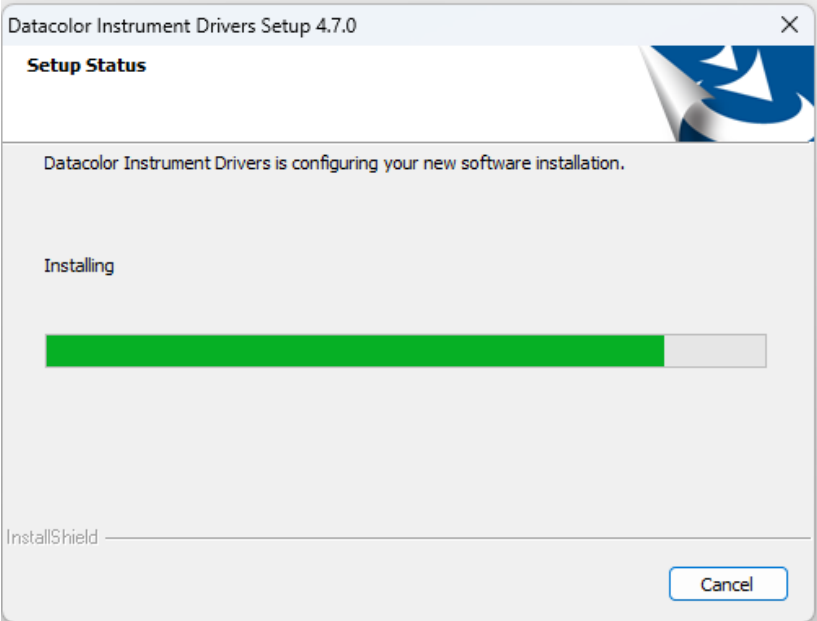


followed by installing the instrument drivers:

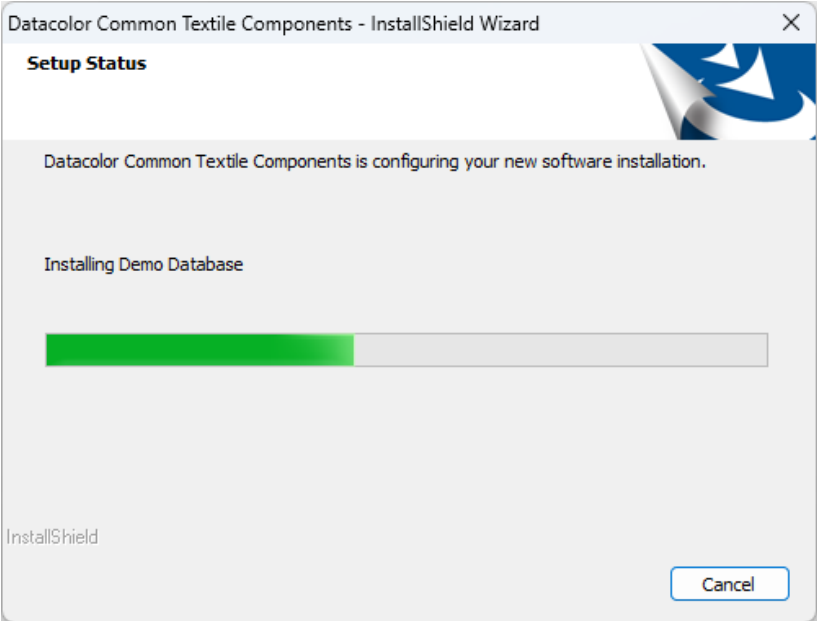


followed by selecting the correct language and clicking **Next**:



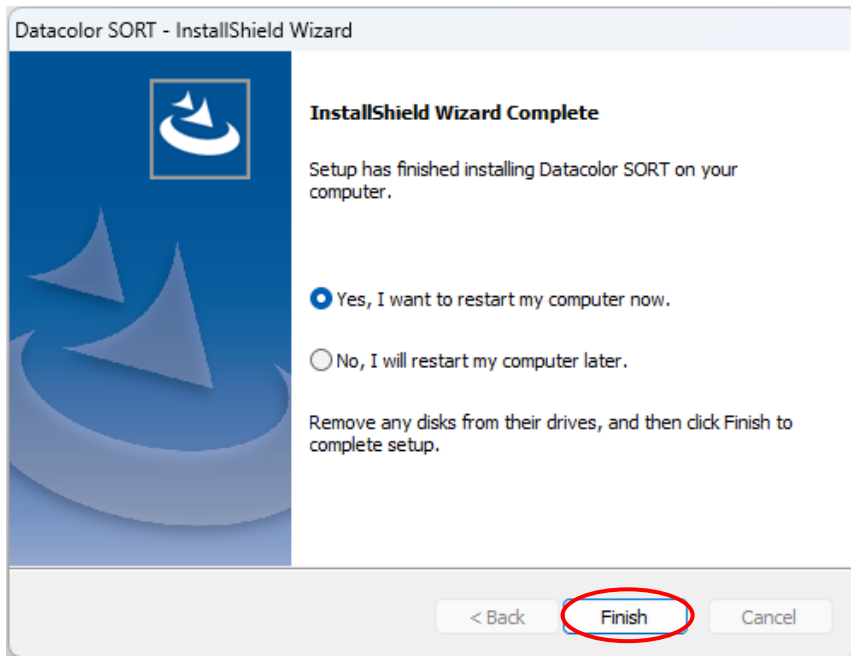


followed by installing the databases:





Finally, the “Complete” screen display.



Click “**Finish**” to restart your computer.

Datacolor SORT is now installed on your system!