

Datacolor MATCH^{TEXTILE}®



Installation Instructions



Datacolor MATCH^{TEXTILE}™ Stand-Alone Installation Guide

All efforts have been made to ensure the accuracy of the information presented in this format. However, should any errors be detected, Datacolor appreciates your efforts to notify us of these oversights.

Changes are periodically made to this information and are incorporated into forthcoming versions. Datacolor reserves the right to make improvements and/or changes in the product(s) and/or program(s) described in this material at any time.

© 2026 Datacolor. Datacolor, SPECTRUM and other Datacolor product trademarks are the property of Datacolor.

Microsoft and Windows are either registered trademarks of Microsoft Corporation in the United States and/or other countries.

To obtain information on local agents, sales or support contact, visit our website at <https://www.datacolor.com/contact/business-solutions-contacts/>

Support Questions?

If you need help with a Datacolor product, please contact support at: <http://industrial.datacolor.com/support>.

Contents

| | |
|--|----------|
| INTRODUCTION | 4 |
| SYSTEM REQUIREMENTS | 5 |
| SYBASE DATABASE INSTALLATION | 5 |
| TERMINAL SERVER CONFIGURATIONS | 5 |
| NEW INSTALLATION VS. UPGRADE | 5 |
| FIREWALL BLOCKING MESSAGES | 5 |
| DATA COLOR MATCH^{TEXTILE} INSTALLATION | 6 |
| OVERVIEW | 6 |
| INSTALLATION PROCEDURE | 7 |

Introduction

This document will provide information on how to install Datacolor Match Textile on a new system or as an upgrade for an existing installation.

This document is for stand-alone computer systems.

The installation procedure includes the following steps:

- **Installation of Sybase Database Management Software**

Sybase is a database management system that is required to run Datacolor software. You will need the ISO image labeled “Sybase” to begin the installation process. Sybase V17.0.10.6089 must be installed **before** installing or updating Datacolor Match Pigment.

- **Installation of Datacolor MATCH^{TEXTILE}**

The Datacolor Match Textile program is on a separate ISO image and must be installed **after** installing Sybase.

- **Software License Validation**

The installation will ask you to activate your license. Make sure you have a valid activation code, and that the maintenance date expiry of that license is greater than the release date of the installer. For Offline and Local License Server activation and installation, please refer to their respective installation instructions.

System Requirements

Follow the link below for information on the system requirements:

<https://www.datacolor.com/business-solutions/downloads>

Please contact Datacolor for Terminal Server hardware and software requirements.

Sybase Database Installation

Sybase is a database management system that is required to run Datacolor software. Sybase V17 must be installed **before** installing or updating Datacolor Match Pigment.

For step-by-step instructions, see the Installation Instructions found on the installation menu of the SYBASE ISO image. To view a PDF version, browse to the folder "Documents" on the SYBASE ISO image and select the file "Sybase Installation Guide.pdf".

Terminal Server Configurations

For information on installing Datacolor Match Pigment on a terminal server, please see the Installation Instructions found on the installation menu of the SYBASE ISO image. To view a PDF version, browse to the folder "Documents" on the SYBASE ISO image and select the file "Sybase Installation Guide.pdf".

New Installation vs. Upgrade

When preparing to upgrade your system, we strongly recommend the following:

- Restart the system before you begin the upgrade. ***This is especially important if you are running a previous release of Datacolor MATCH^{TEXTILE}.*** This is done to clear the memory of any modules that might interfere with the program upgrade.

Firewall Blocking Messages

If you have enabled a firewall on the system, you may see a Windows Security dialog box on several occasions during the installation.

You must click **Unblock** to continue the installation.

Datacolor MATCH^{TEXTILE} Installation

Overview

The Datacolor MATCH^{TEXTILE} product includes both Datacolor MATCH^{TEXTILE} and Datacolor TOOLS. These are two separate programs contained on two separate ISO images. *Please follow these instructions to ensure successful installation of Datacolor MATCH^{TEXTILE} and Datacolor TOOLS.*

NOTE

If Sybase V17 is not installed on the system you cannot complete the installation of Datacolor MATCH^{TEXTILE} or Datacolor TOOLS.

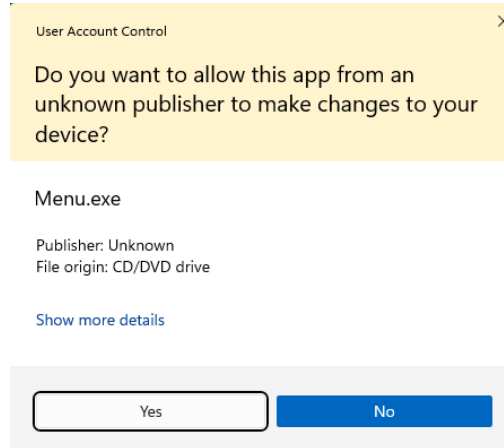
Before You Begin

- Microsoft Windows® should be properly installed on your computer.
- You must have Windows Administrator right to install this software.
- **Restart the system before installing the software.** This removes any memory-resident modules that may interfere with the installation and is especially important if you have been running a previous version of Datacolor MATCH^{TEXTILE}.
- Install Sybase V17 database management software.
- Close all other programs that are running.
- Have all program installation ISO images readily available.
- Install Datacolor MATCH^{TEXTILE} before installing Datacolor TOOLS.

Installation Procedure

To install Datacolor MATCH^{TEXTILE}:

1. Download the ISO image installer and mount it on your machine. Run Menu.exe and a prompt will be displayed.



Click **Yes**.

The Datacolor MATCH^{TEXTILE} installation menu should appear automatically:



If you do not see the Datacolor MATCH^{TEXTILE} installation menu, do the following:

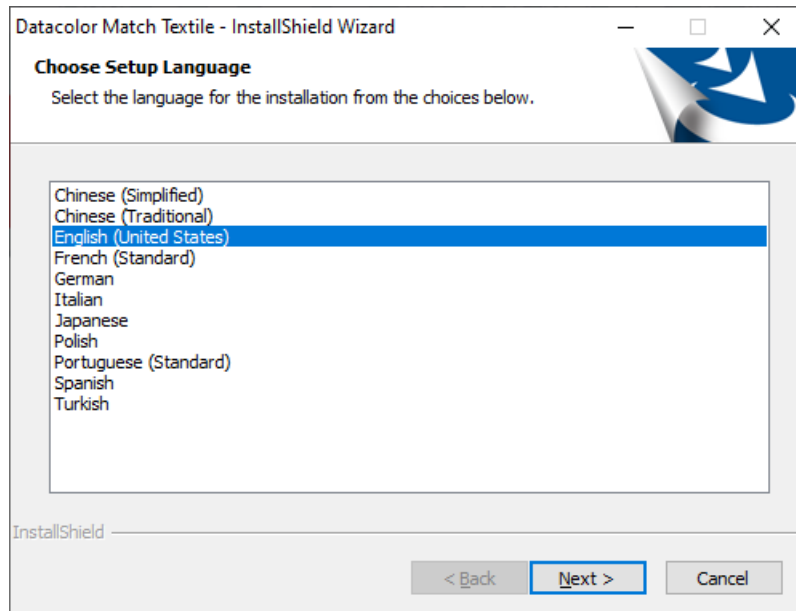
- Click the **Start** button.
- From the Start menu, choose **Run**.
- In the Run dialog box, type **D:\MENU** and click **OK**.

NOTE

If your mounted ISO drive is a letter other than D, use that letter in the dialog box.

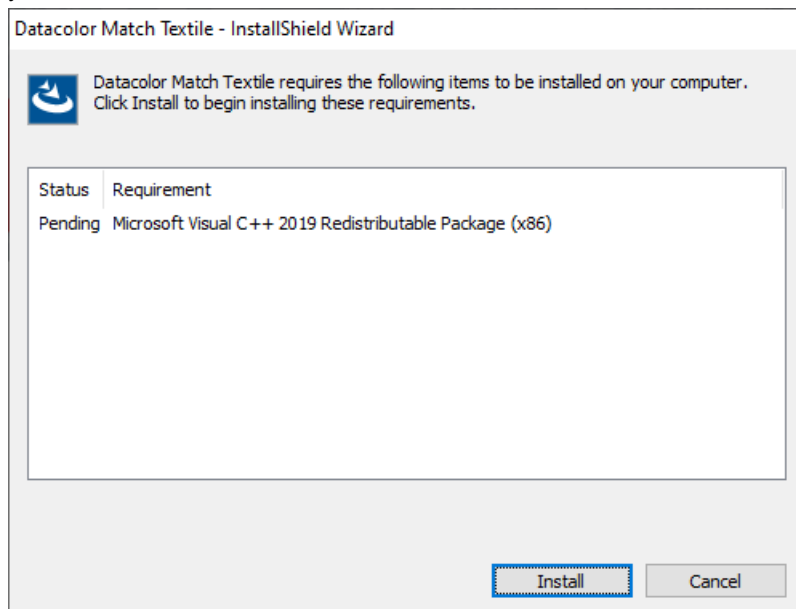
2. Click on **Install Datacolor MATCH TEXTILE™**.

The Datacolor MATCH TEXTILE installation will prompt you to select a language:

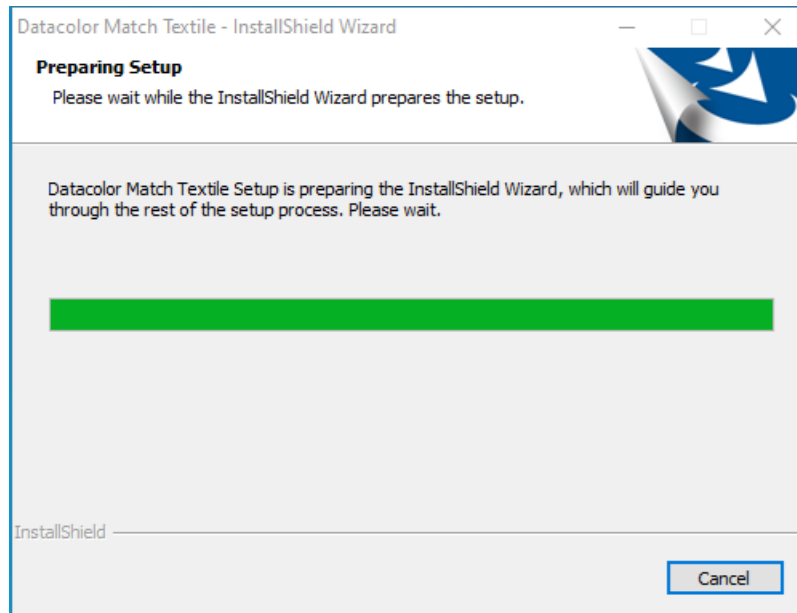


Select the appropriate language and click **Next**.

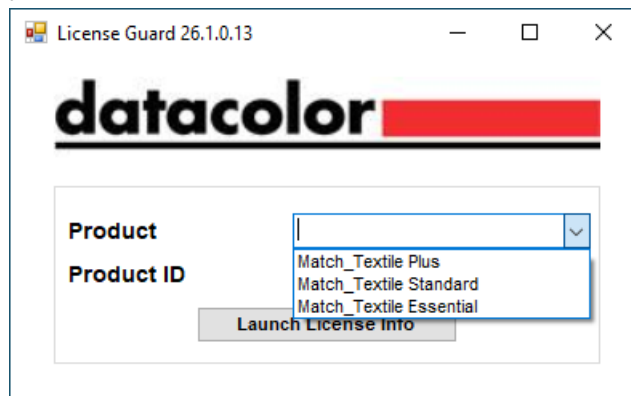
3. Optional: the VS C++ 2019 Redistributable Package (x86) will be prompted, if it is not installed yet. Click **Install** button.



4. The License Guard components will now be installed for preparing setup, if it is not installed yet.



5. After License Guard is installed, the software will check if a license is installed. If there is no license installed, a License Guard window will pop up with a drop-down box selection of licenses you can activate.



6. Choose a license to activate and click the “Launch License Info” button and the License Info window is displayed:

The License Info dialog box features the Datacolor logo at the top. Below it is a table with the following content:

| Name | Status |
|--------------------|--------------------|
| Product | Match Textile Plus |
| ! No License Found | |
| | |
| | |

Below the table is the **Actions** section with two columns of radio buttons:

- I want to...**
 - ☒ Activate a license.
 - ☐ Refresh my license.
 - ☐ Deactivate this workstation.
- Using...**
 - ☒ Online Method
 - ☐ Offline Method

Below the actions is the **License Details:** section with four input fields:

- License ID: [input field] !
- Password: [input field] !
- Installation ID: [input field]
- Installation Name: [input field] (Optional)

At the bottom are three buttons: Cancel, Back, and Next.

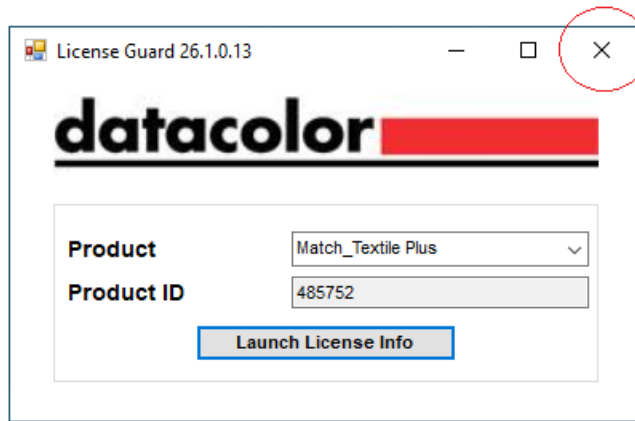
Enter the **License ID** and **Password**. Then click **Next** button to activate the selected license. After the activation completed, click the **Finish** button (see below) to close the License Info dialog box.

The License Info dialog box now displays a success message. At the top left is a blue checkmark icon. The text reads:

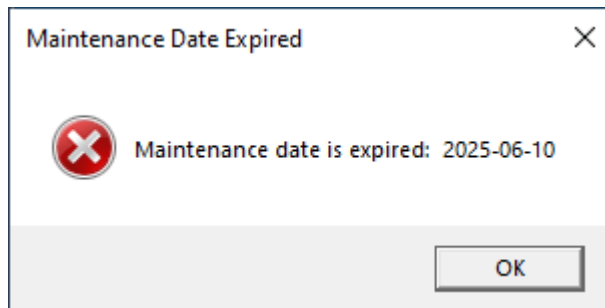
Request Completed
Your request has been processed successfully. Click Finish to continue.

At the bottom are three buttons: Cancel, Back, and Finish.

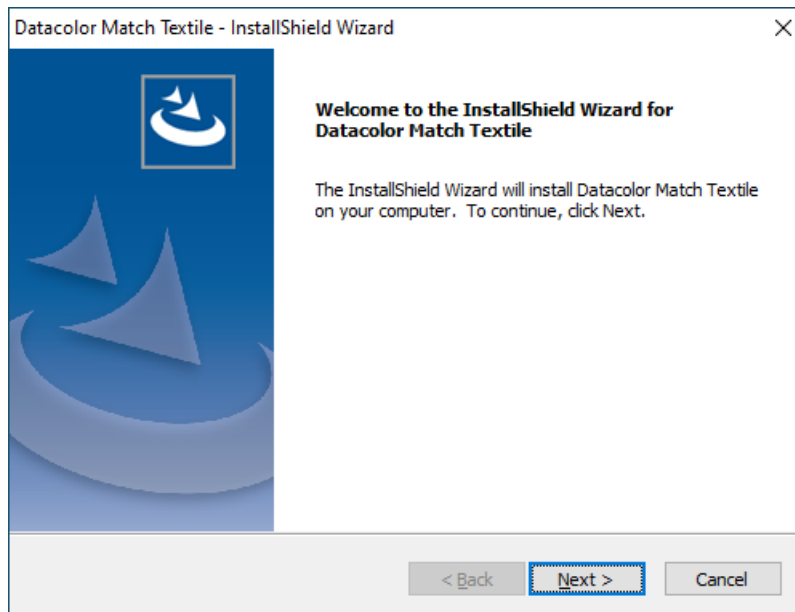
- Click the Close button ('X' at top-left corner) to close the License Guard dialog.



Note: If your maintenance contract is expired, a "Maintenance Date Expired" dialog may be displayed like the one below. Just click the "OK" button and it will proceed to install if the application version is 26.1.



- Click **Next** button on the InstallShield Wizard to continue.



9. A software license agreement is displayed:

Datacolor Match Textile - InstallShield Wizard

License Agreement
Please read the following license agreement carefully.

DATACOLOR AG - END-USER LICENSE AGREEMENT

1. Scope of the Agreement
This End User License Agreement ("EULA") is a binding legal agreement between you, as an individual or entity, and Datacolor AG, with registered office in Risch, canton of Zug ("Datacolor") for the use of Datacolor Match Textile software ("Software").

☐ I accept the terms of the license agreement
☒ I do not accept the terms of the license agreement

Print

InstallShield

< Back Next > Cancel

10. To continue with the installation, you must accept the agreement and click on **Next**.

11. The Customer Information dialog will show up. Enter the names of User and Company, then click on **Next** button to continue.

Datacolor Match Textile - InstallShield Wizard

Customer Information
Please enter your information.

Please enter your name and the name of the company for which you work.

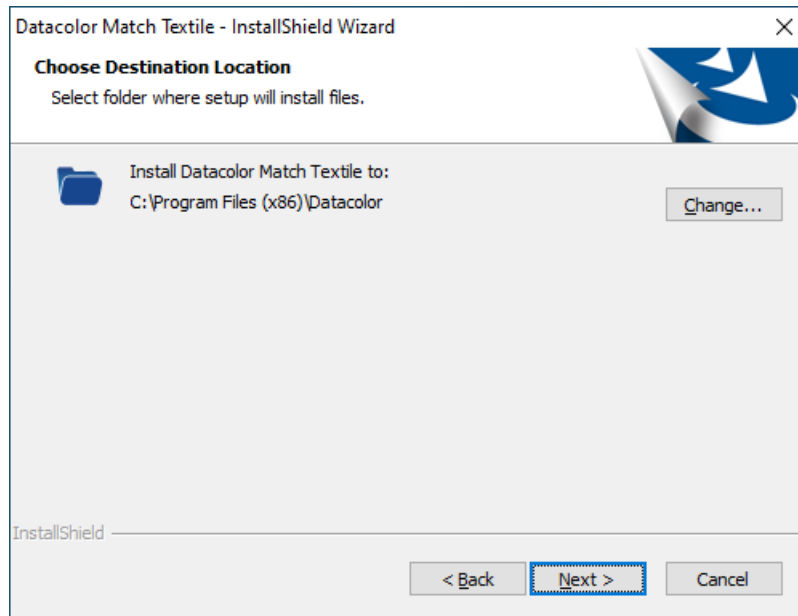
User Name:
Windows User

Company Name:
DCI

InstallShield

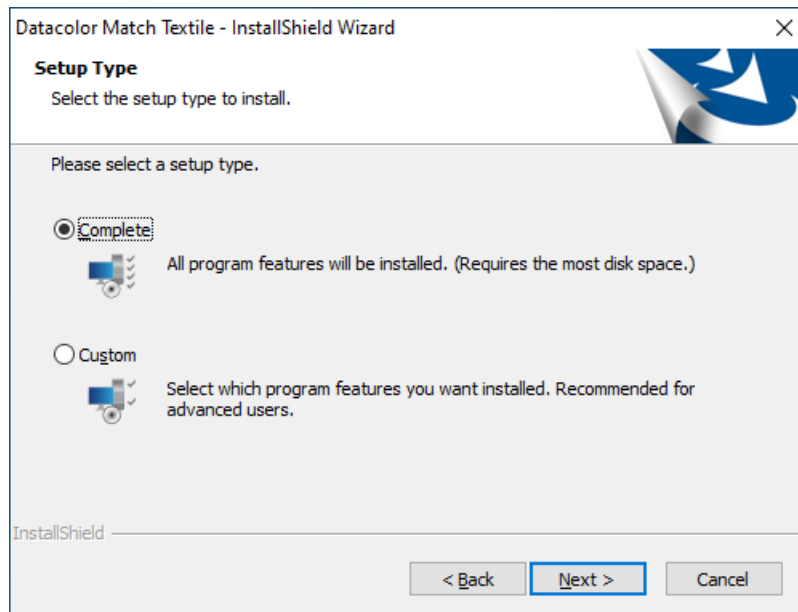
< Back Next > Cancel

12. The program confirms the folder location for Datacolor MATCH^{TEXTILE}:



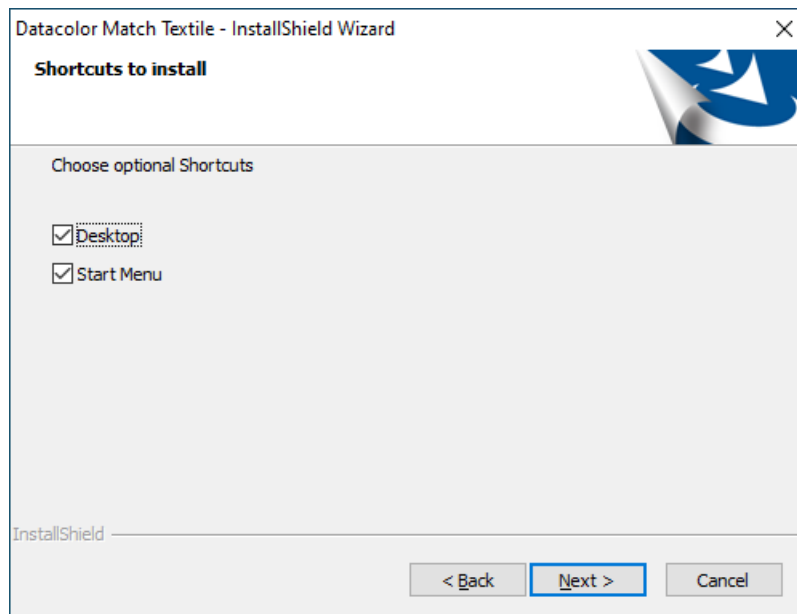
- To select a different location for programs, click **Change...** button.
- To accept the default, click **Next** (recommended).

13. Then the dialog of Setup Type will show up.



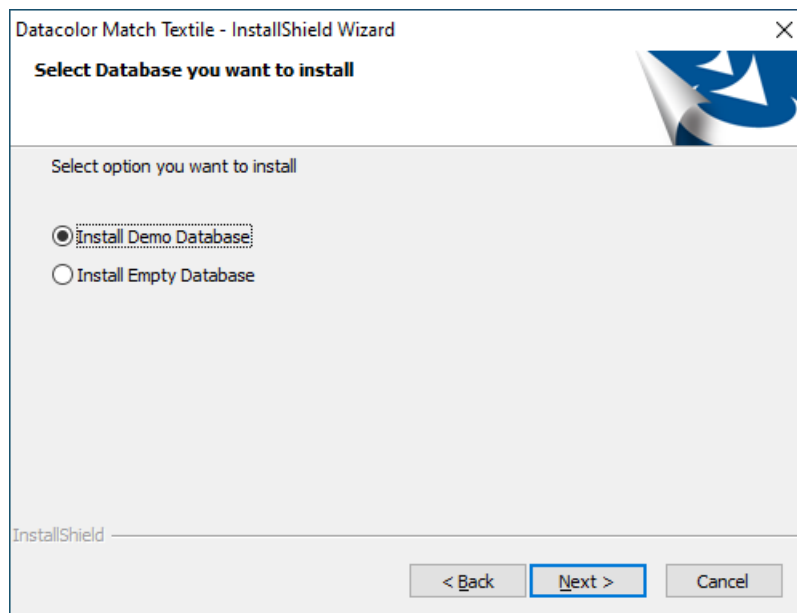
Select a setup type and click **Next** button to continue.

14. Desktop and Shortcut Options.



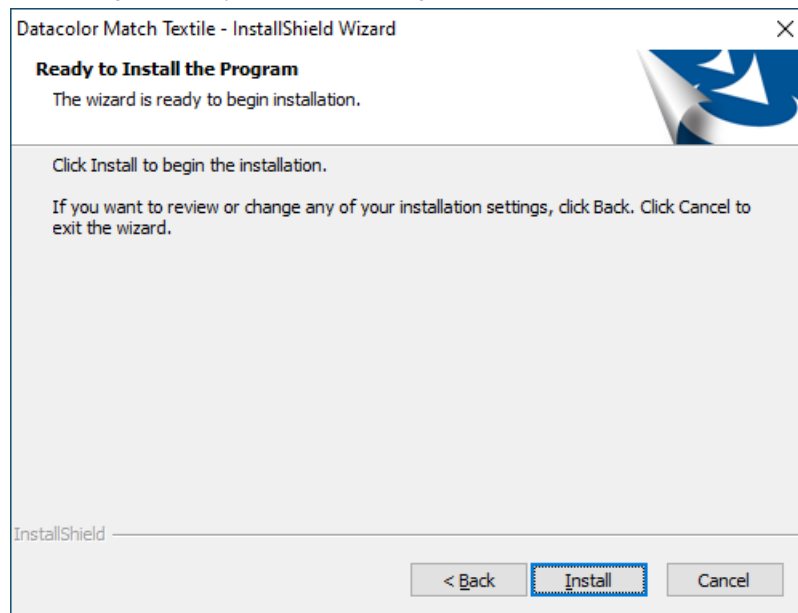
Choose the optional shortcut, then click **Next** button to continue.

15. Selection for Database to be installed



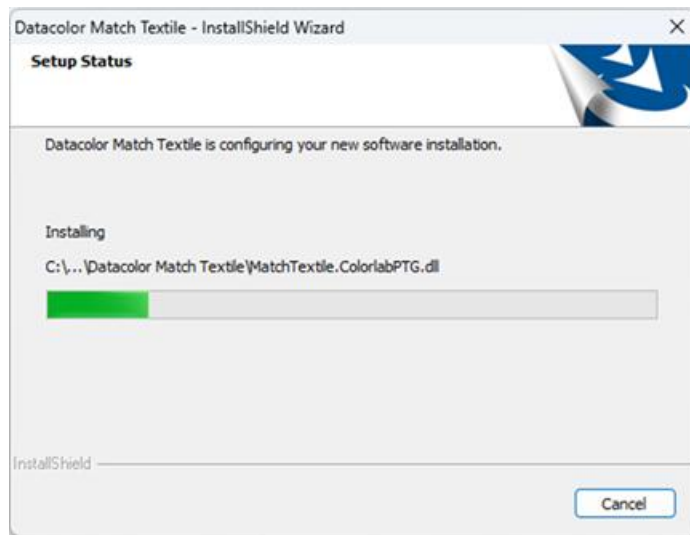
Choose the database you want to be installed, then click **Next** to continue.

16. The dialog of “Ready to Install the Program” will show up.

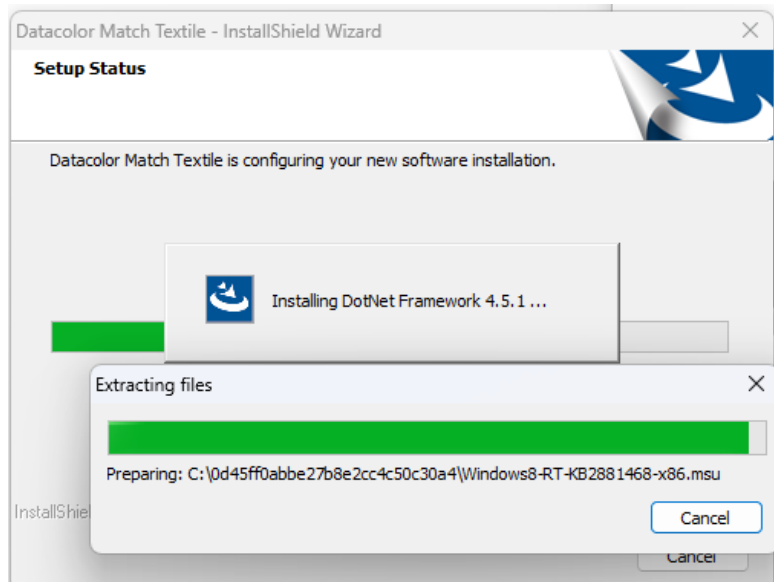


Click **Install** button to continue.

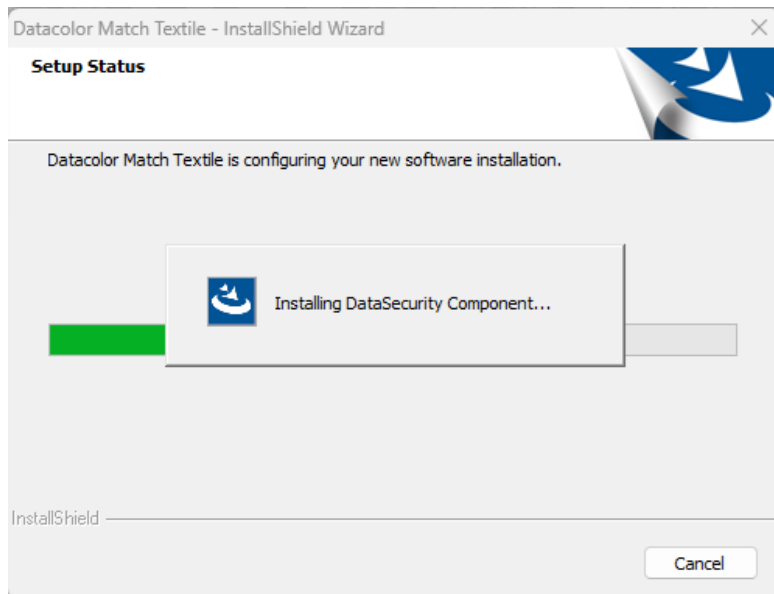
17. It will start with the configurations and installations for the program and the required components.



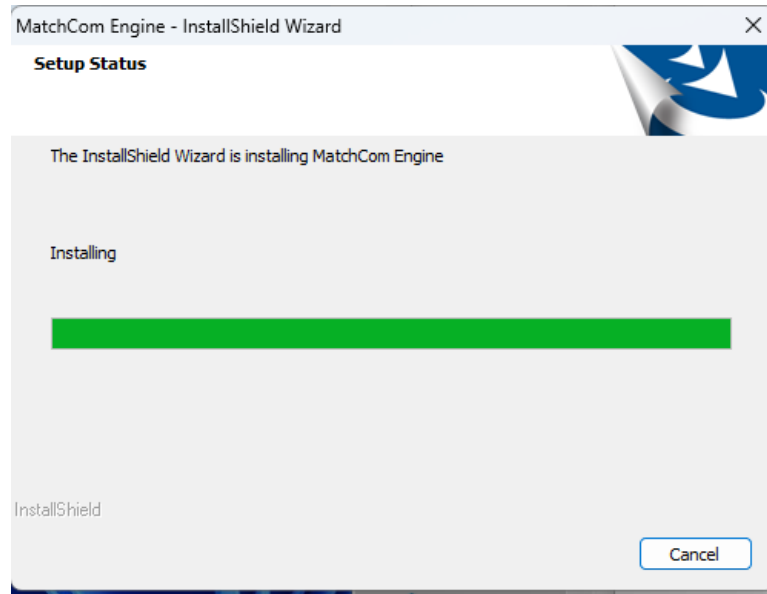
Optional: followed by installing .Net Framework 4.5.1, if it is not installed yet:



Followed by installing the DataSecurity component:



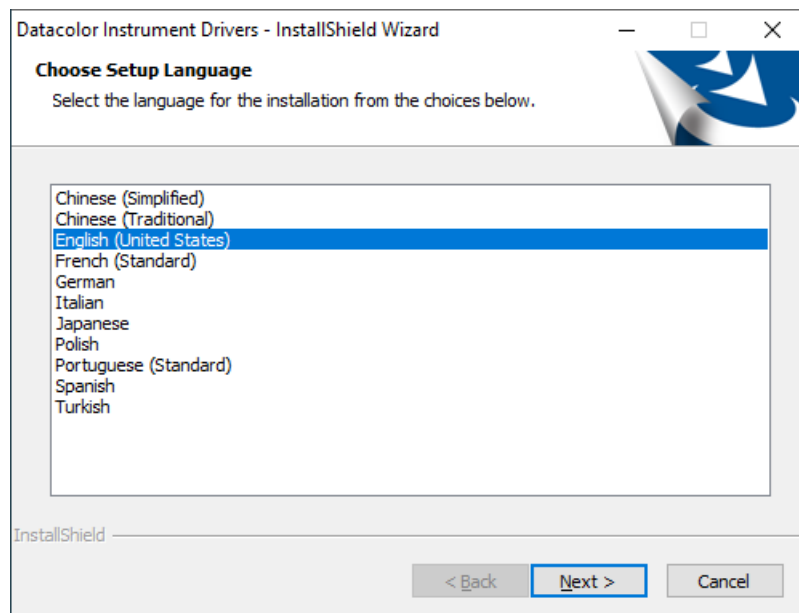
Followed by installing the MatchCom Engine:



Followed by installing the Datacolor Envision:

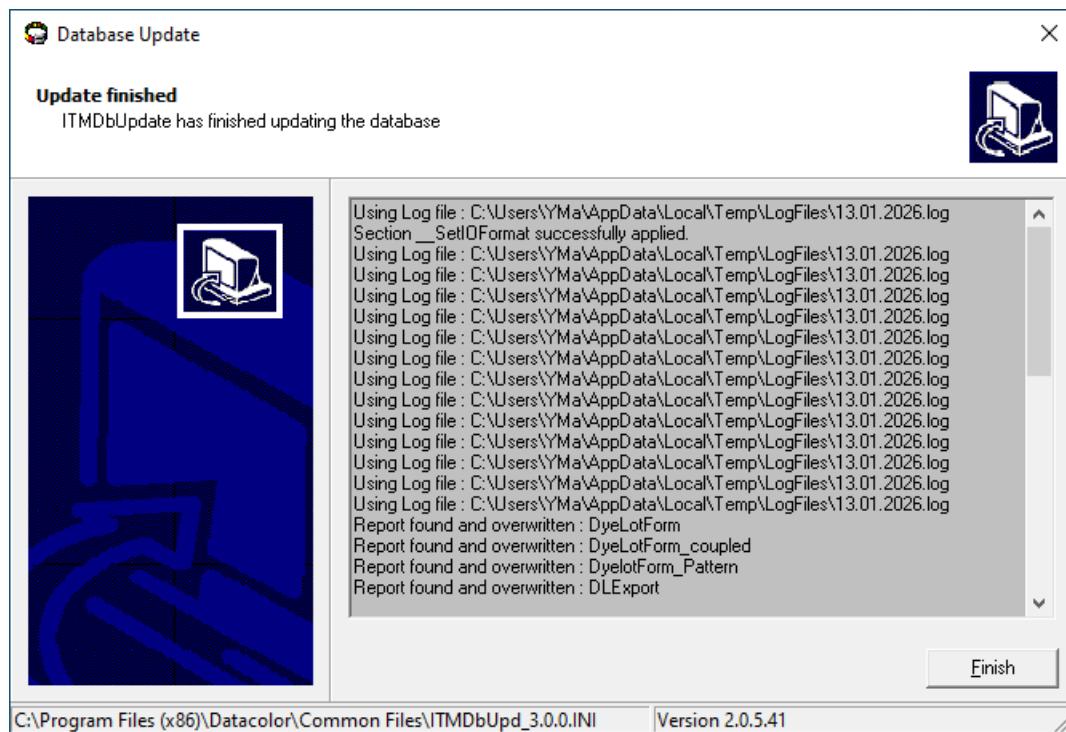


18. The “Choose Setup Language” dialog will show up for Installing Instrument Drivers.



Select the language and click **Next** button to continue.

19. Database updates will follow the installation of Instrument Drivers. After it finishes, the “Database Update” dialog will show up:

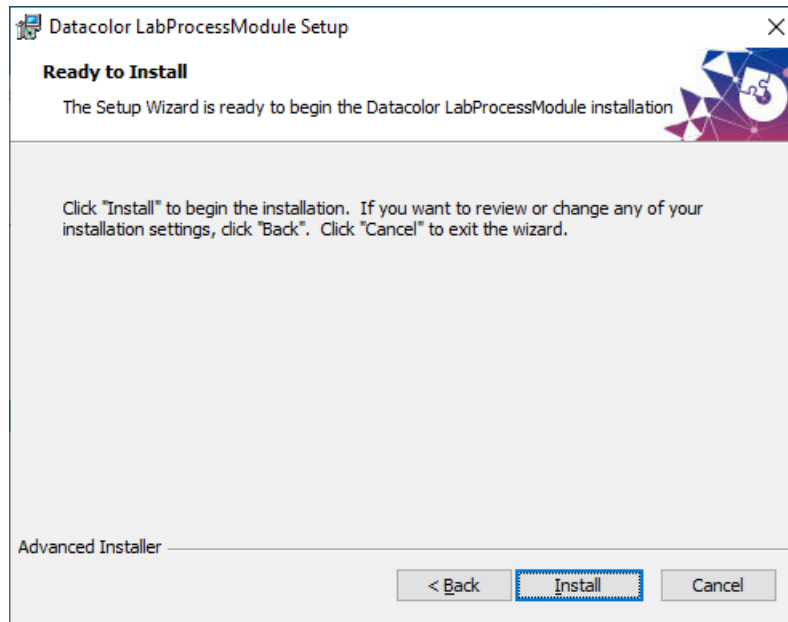


Click **Finish** to continue.

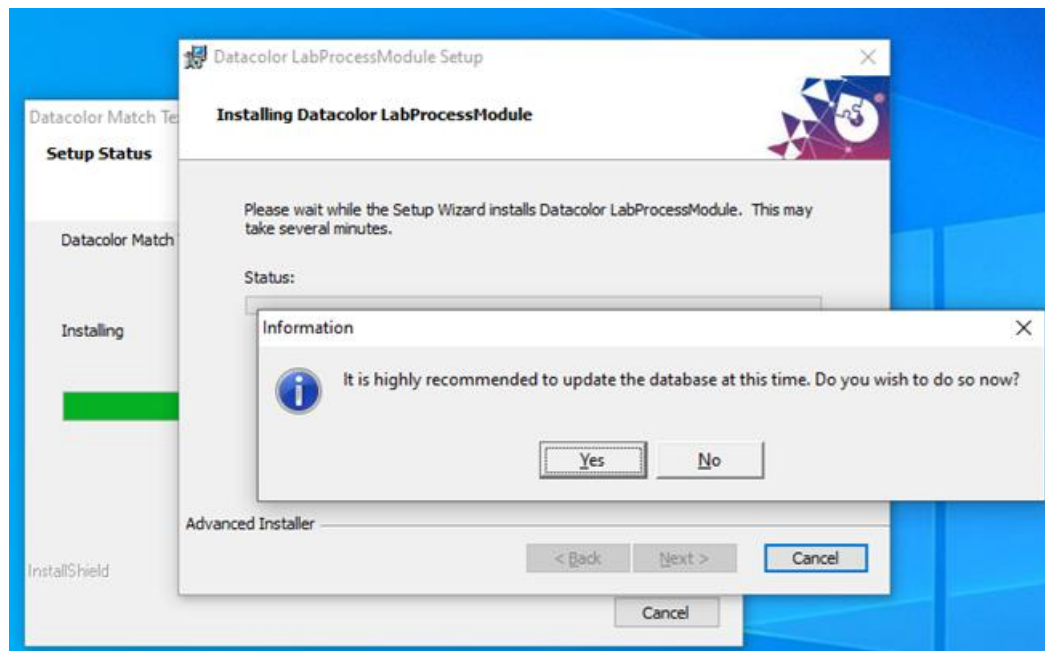
20. “LabProcessModule Setup Wizard” will start.



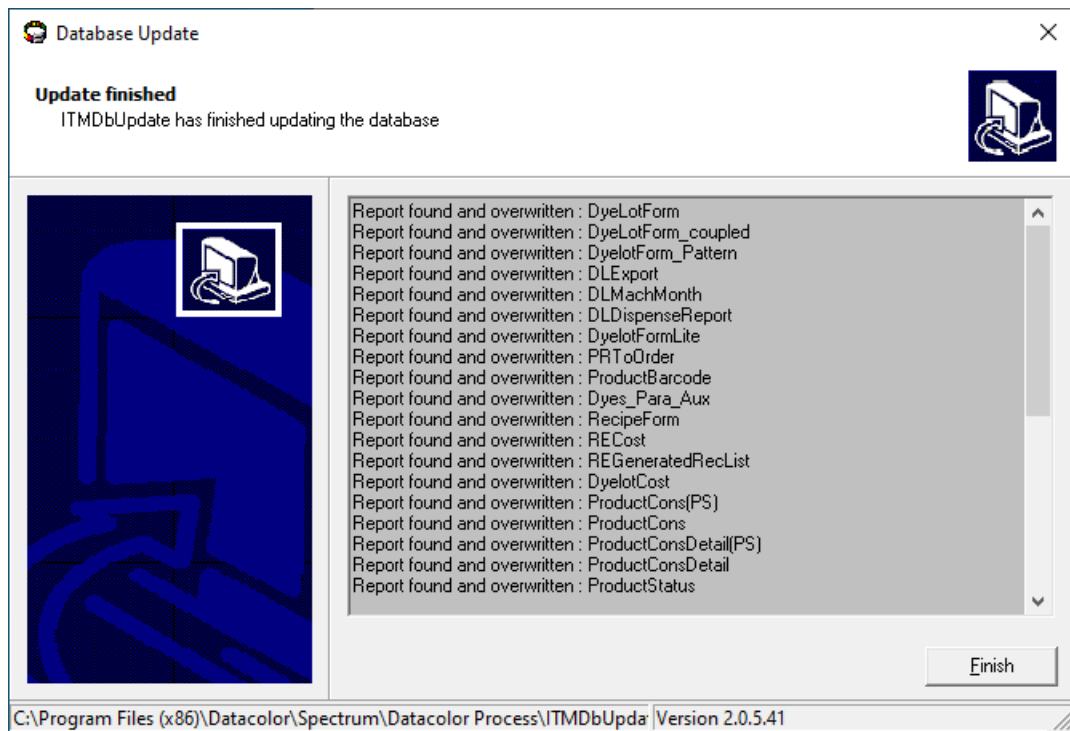
Click **Next** to continue.



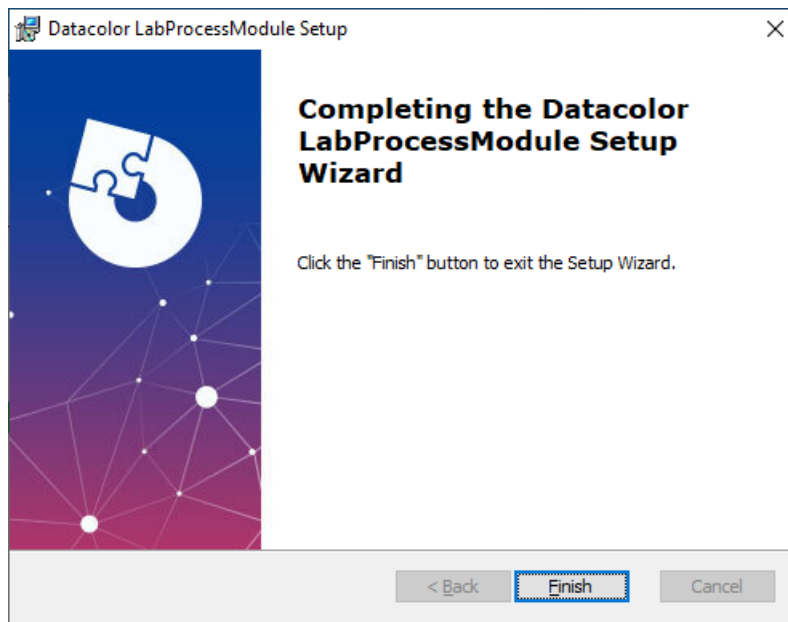
Click **Install** to continue.



Click **Yes** to continue.

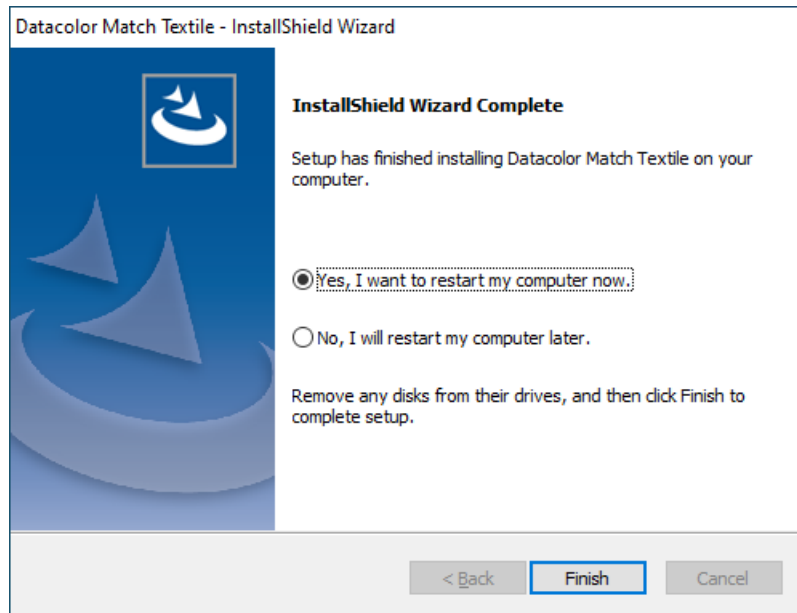


Click **Finish** to continue.



Click **Finish** to continue.

21. Complete the installation



Select **Yes** (recommended) and Click **Finish** to continue.

22. Datacolor *MATCH^{TEXTILE}* is now installed on your system.