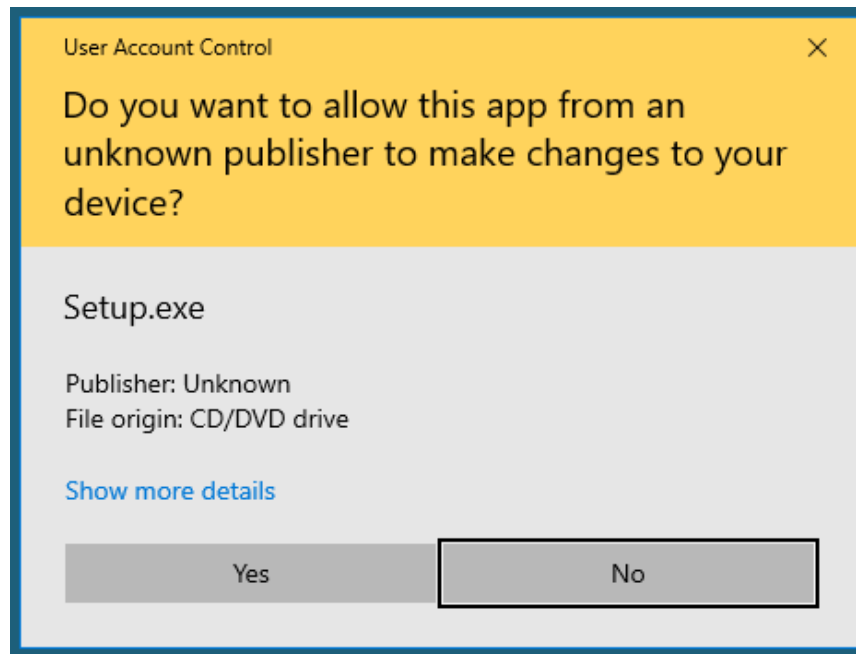

Datacolor Paint Installation Procedure

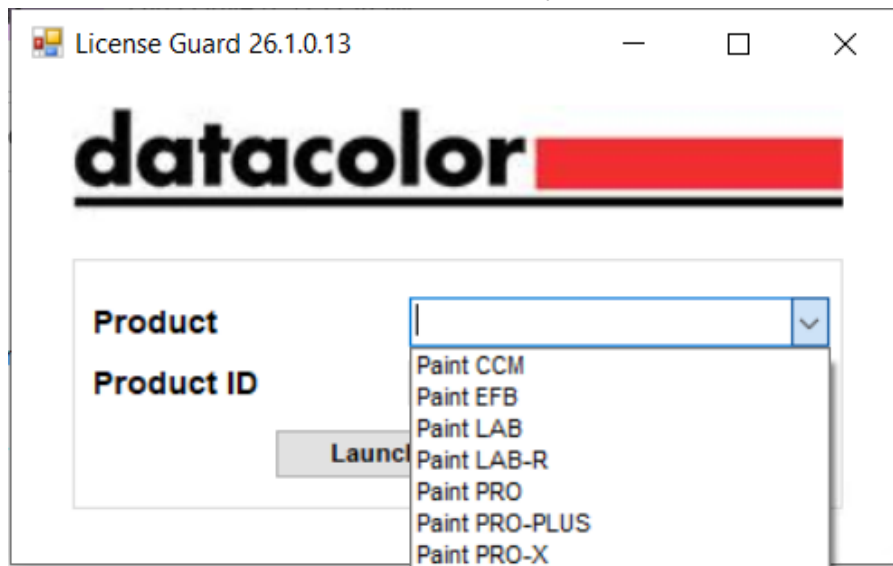
To install Datacolor Paint:

1. Download the ISO image of the installer and mount it on your machine. Run Setup.exe and a prompt will be displayed.



Click **Yes**.

2. The software will check if a license is available on the PC. If no license is found, a window will pop up with a drop-down box selection of licenses you can activate.



3. Choose a license to activate and click the “Launch License Info” button and the License Info window will be displayed:

Name	Status
Product	Paint LAB-R
⚠ No License Found	

Actions

I want to...

☒ Activate a license.

☐ Refresh my license.

☐ Deactivate this workstation.

Using...

☒ Online Method

☐ Offline Method

License Details:

License ID: ⚠

Password: ⚠

Installation ID:

Installation Name: (Optional)

Cancel Back Next

Enter the License ID and Password. Then click Next.

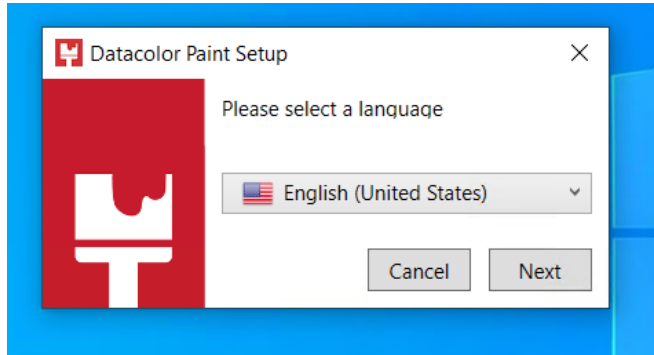
Request Completed

Your request has been processed successfully. Click Finish to continue.

Cancel Back Finish

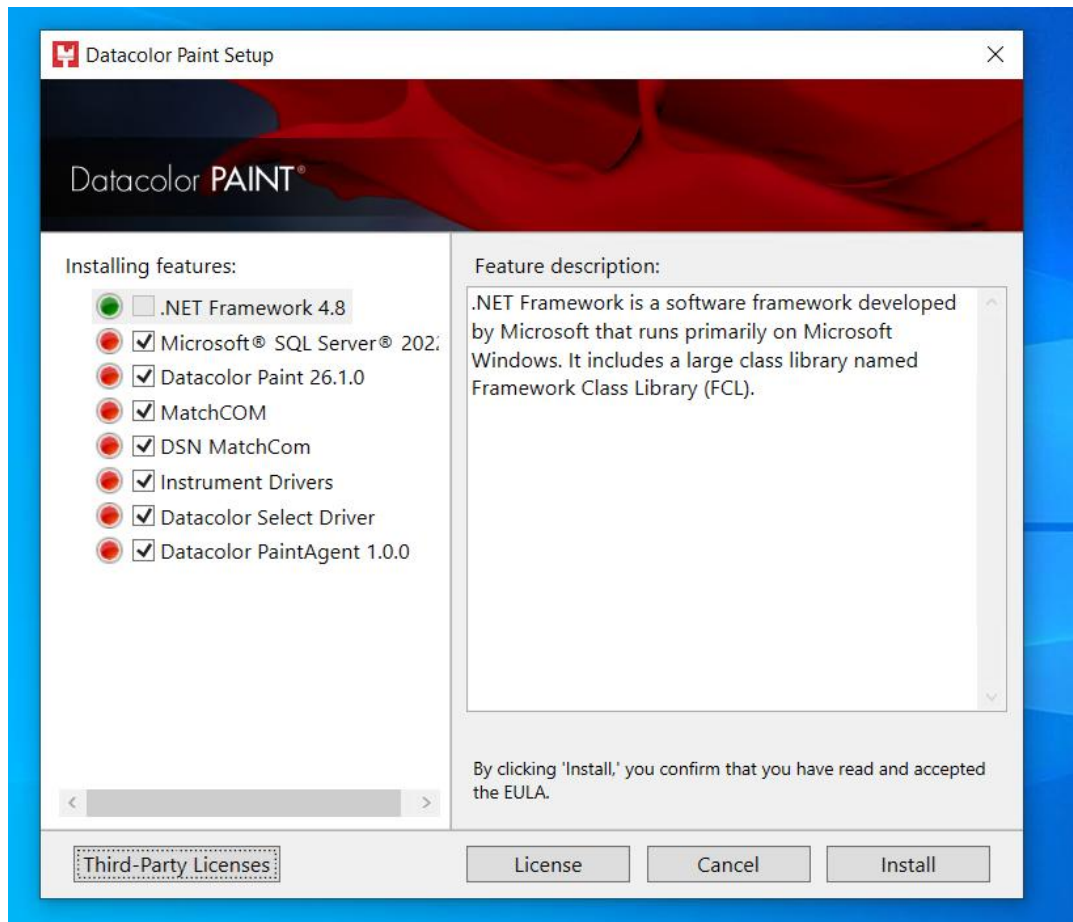
Click Finish and close the window.

4. The language selection dialog will be displayed:

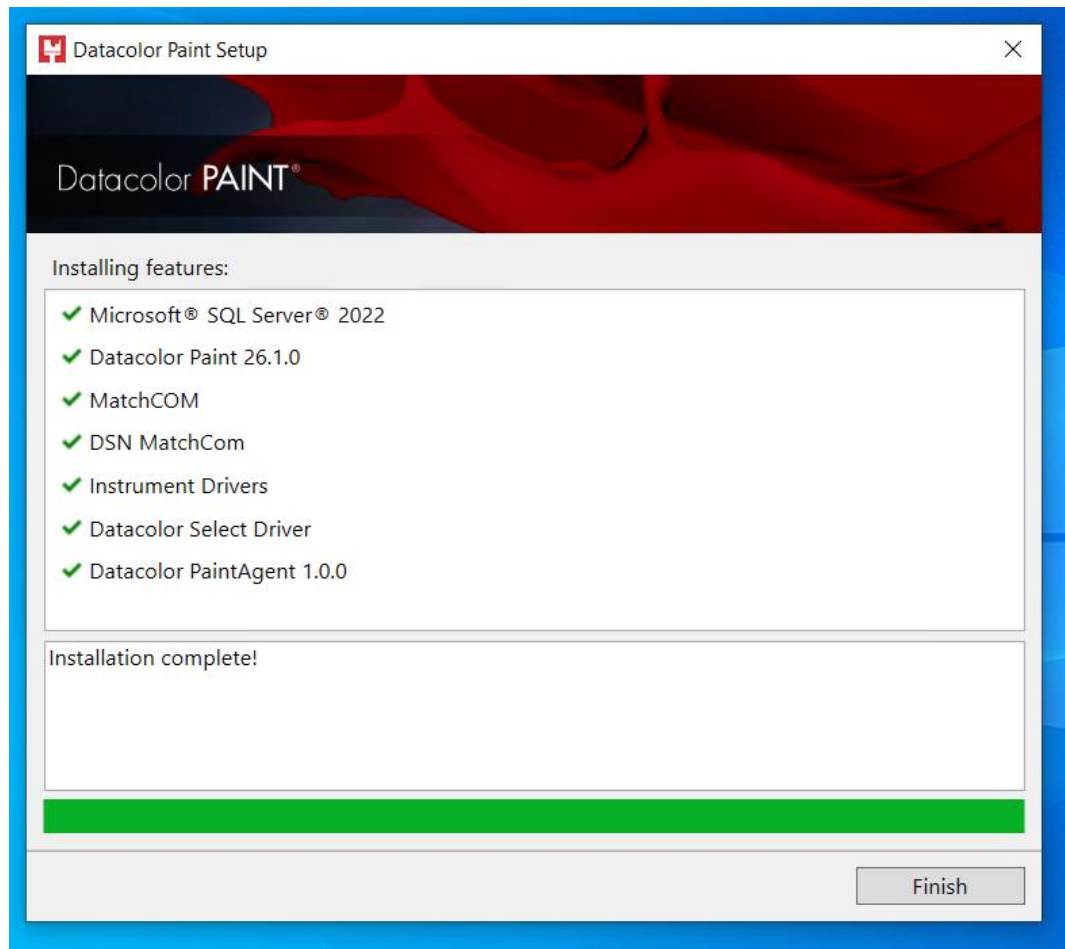


Select the preferred language, then click **Next** to continue.

5. The setup window is displayed:



To continue with the installation, you must click on 'Install' button. By continuing with the installation you confirm that you have read and accepted the EULA. The EULA is inside the Licenses directory of the ISO. It is possible to open the directory by clicking on the 'Third-Party Licenses' button.



After the installation is completed, click on Finish to close the setup window.