

Datacolor Process Installation Guide

Datacolor Process Stand-Alone Installation Guide (January, 2026)

All efforts have been made to ensure the accuracy of the information presented in this format. However, should any errors be detected, Datacolor appreciates your efforts to notify us of these oversights.

Changes are periodically made to this information and are incorporated into forthcoming versions. Datacolor reserves the right to make improvements and/or changes in the product(s) and/or program(s) described in this material at any time.

© 2008 Datacolor. Datacolor, SPECTRUM and other Datacolor product trademarks are the property of Datacolor.

Microsoft and Windows are either registered trademarks of Microsoft Corporation in the United States and/or other countries.

To obtain information on local agents, sales or support contact, visit our website at <https://www.datacolor.com/contact/business-solutions-contacts/>

Support Questions? If you need help with a Datacolor product, please contact support at: <http://industrial.datacolor.com/support>.

Table of Contents

1 Installation Overview.....4

 1.1 System Requirements4

 1.2 Datacolor Process Installation set.....5

 1.3 Sybase Installation Options.....6

2 Installing Process on a System with Match Textile (nonupgrade case).....7

 2.1 Standalone System7

 2.2 Local Area Network (LAN).....7

 2.2.1 Server Installation7

 2.2.2 Client Installation7

3 STEP-By-Step installation of PROCESS (Standalone System)8

 3.1.1 Ready to Install 10

4 Creating a Sybase Service 16

1 Installation Overview

This document describes the installation of Datacolor Software to your computer's hard disk. If you have purchased your computer from us, the software will be already installed. If you purchased your own computer, follow these instructions to install our software on your computer.

Before you begin the installation, you should have all ISO images, and Microsoft Windows* should be properly installed on your computer. Have a valid license activation code with a maintenance date greater than the release date of the installer. For Offline and Local License Server activation and installation, please refer to their respective installation instructions

1.1 System Requirements

The system requirements shown below are the minimum configuration to ensure effective operation of the standard Datacolor PROSESS software. Configurations below stated requirements may work, but are not supported by Datacolor.

Component	Recommended	Notes
Processor	Dual Core Processor	1
Memory RAM	8 GB	1
Free Hard Drive Capacity	500 GB	1
Video Resolution	True Color	2
DVD Drive	DVD Writer	3
Available Ports	(1) RS-232 Serial (for older spectrophotometers) (3) USB	4
Operating System	Windows® 11 Pro	5
Email (for supported level)	Outlook 2007 or above, POP3	
Authenticated Sybase Database, supplied with the system	Sybase V17.0.10.6089	
Optional Database upon request	Microsoft SQL Server 2019 (supports 2016, 2019, 2022)	6
Server OS	Microsoft Server 2019 (supports 2016, 2019, 2022)	7

Notes:

- 1) Minimum system configurations may limit performance, data capacity and operation of some features. Faster processor, more cores, more memory and faster hard drives

will significantly enhance performance. Accurate on-screen color display requires monitor calibration and true-color video mode.

- 2) Datacolor Match Textile is supplied on one ISO image and Sybase 17 is supplied on a separate ISO image. Recommend a DVD writer for data backup and file transfer from standalone systems.
- 3) Datacolor spectrophotometers use either an RS-232 Serial or USB connectors. Datacolor Spyder™ requires a universal serial bus (USB) connection. Printer port requirements (Parallel or USB...) depend on the specific printer selected.
- 4) Windows 32 bit and 64 bit operating systems are supported. 64 bit hardware running Windows 32 bit operating system is supported. Datacolor Tools is a 32 bit application.
- 5) Microsoft SQL Server database is only available for the textile database format.
- 6) Microsoft Server 2016, 2019 and 2022 are supported.

1.2 Datacolor Process Installation set

There are 2 ISO images for Installing:

1. Sybase ISO Image
2. Datacolor Process ISO Image

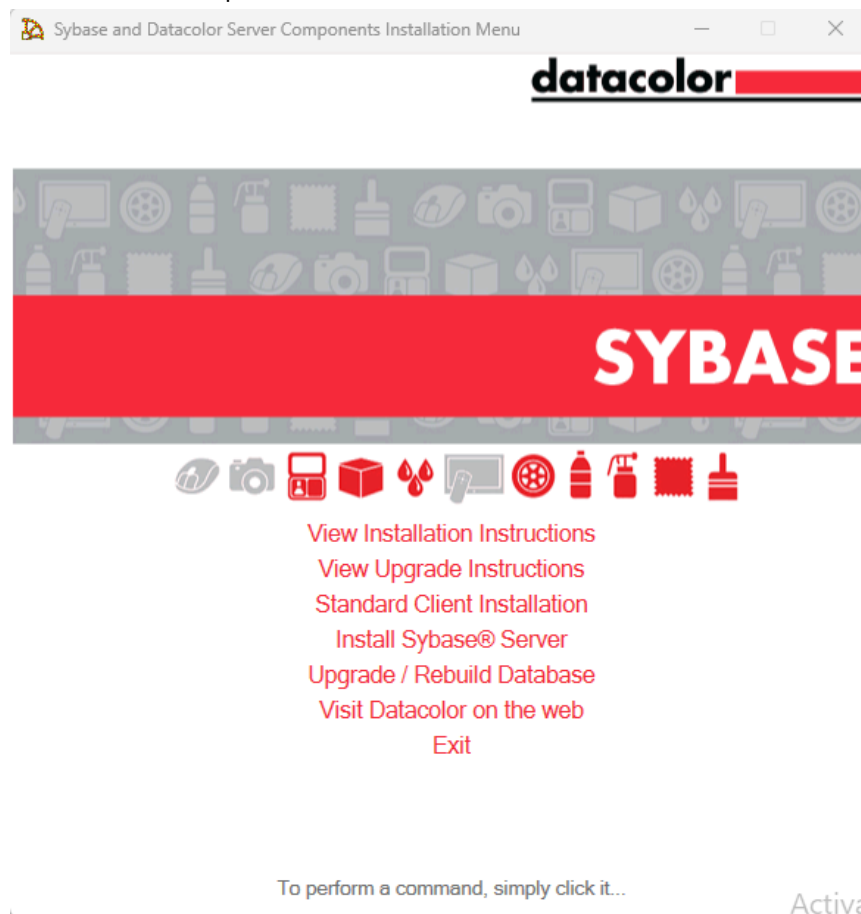
Important, Before You Begin! *You must have Administrator Rights to install this software and you must have installed Sybase first!*

1.3 Sybase Installation Options

There are 2 different Sybase Installation options on the Sybase CD:

1. **Standard Client Installation** – This is a silent install that will not ask which components to install or ask about the number of licensed users. This should be used for all standalone PC systems as well as for client installations for PCs on a traditional LAN.
2. **Install Sybase Server** – This installation will ask which components to install and also allow you to set the number of licensed users. This should be used for the server installation on a traditional LAN and for a terminal server application.

Select either the Standard Client Installation or Install Sybase Server from the Sybase Installation Menu to perform the installation desired:



2 Installing Process on a System with Match Textile (nonupgrade case)

2.1 Standalone System

This is a dedicated, single-user system that does not share the database. The Sybase database server and the Datacolor applications software is installed on the same system. To install on a standalone system, follow these steps:

1. Mount the **Sybase ISO image**, select **Standard Client Installation** from the installation menu and follow the prompts. For step-by-step instructions, see the document *SybaseInstallationGuide_REV_14.pdf*.
2. After Sybase has been installed, mount the **Process ISO image** and select the option to install Datacolor Process.

2.2 Local Area Network (LAN)

This is a group of systems that share a common database. The Datacolor application software is installed on each client machine, and the database is located on a server that can be accessed by all of the client computers.

2.2.1 Server Installation

This installation procedure is performed on the server computer.

1. Mount the **Sybase ISO image**, select **Install Sybase Server** from the installation menu and follow the prompts. For step-by-step instructions see the document *SybaseInstallationGuide_REV_14.pdf*.
2. Create a **Windows database service** for the Sybase Adaptive Server program. For step-by-step instructions, see also Appendix, *Sybase Database Service in SybaseInstallationGuide_REV_14.pdf*.
- 3.

2.2.2 Client Installation

This installation procedure must be repeated for each client computer on the network.

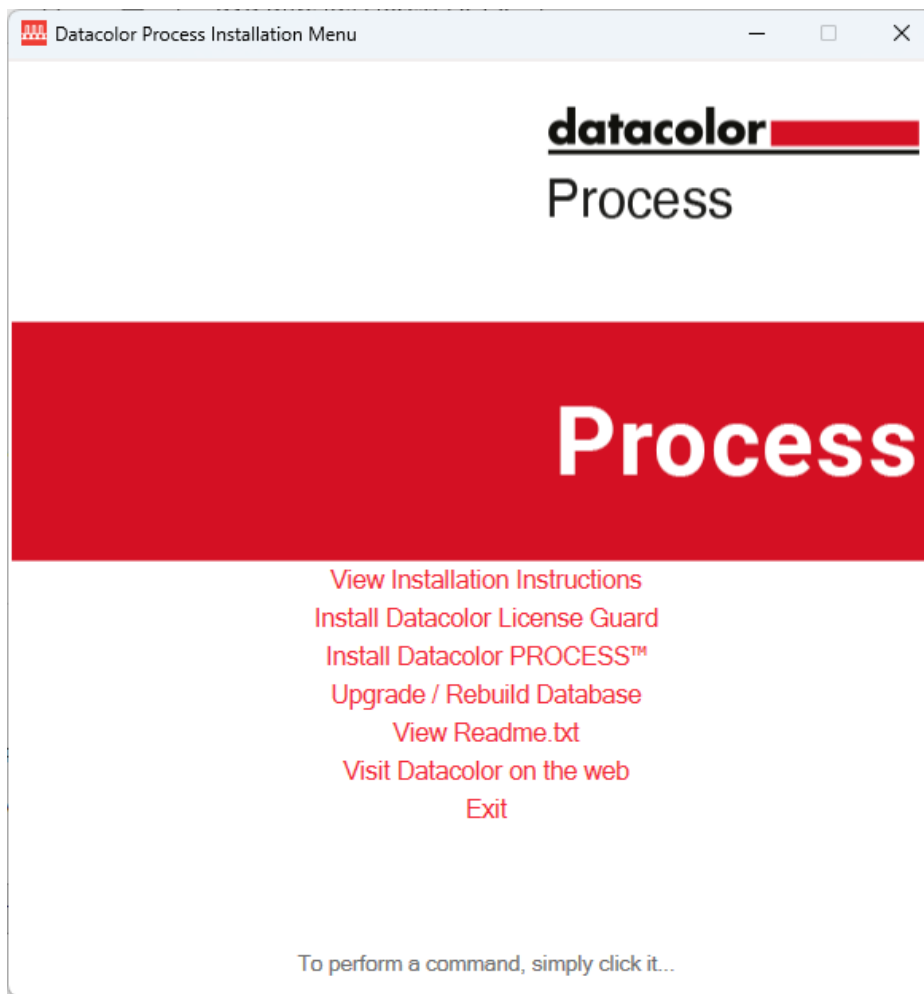
1. Mount the **Sybase ISO image**, select **Standard Client Installation** from the installation menu and follow the prompts. For step-by-step instructions, see also *Detailed Installation Instructions, Sybase Client Installation in SybaseInstallationGuide_REV_14.pdf*
2. Install **Datacolor Process** and Datacolor Match Textile on each client computer. For step-by-step instructions, see also the Installation Guide for the specific application.
3. Modify the **ODBC connection** on each client computer. This directs the program to look for the databases on the network. For step-by-step instructions, see also Appendix, *ODBC Connection in SybaseInstallationGuide_REV_14.pdf*.

3 STEP-By-Step installation of PROCESS (Standalone System)

To install your software, do the following:

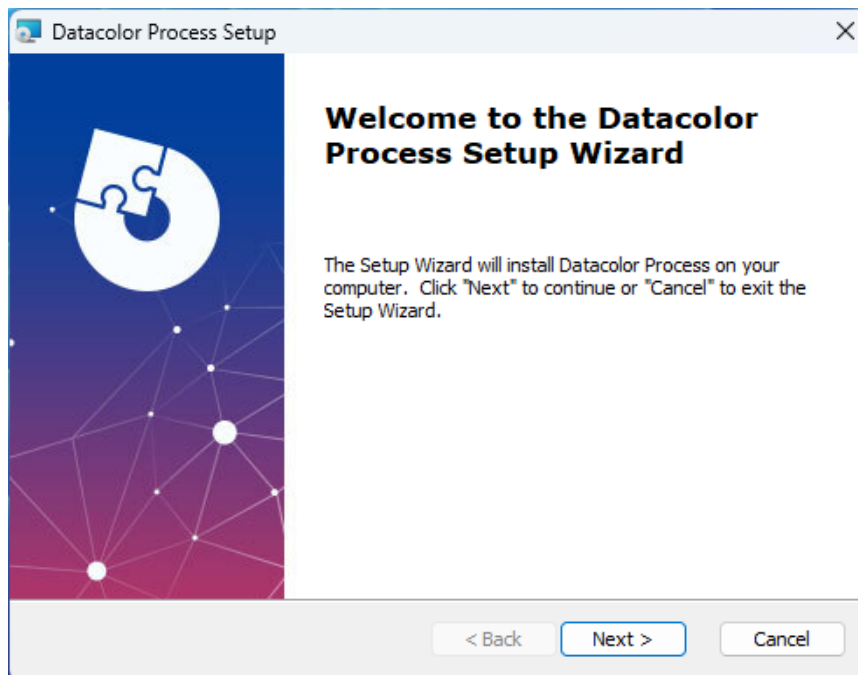
1. Start Windows.
2. Place the product CD into the CD drive.
3. The main installation menu should appear automatically.

If you do not see the menu window, do the following: Click the **Start** button from the start menu, choose **Run...** in the Run dialog box, type **D: MENU** and click OK. (If your ISO image Drive is a letter other than D, use that letter in the dialog box.)

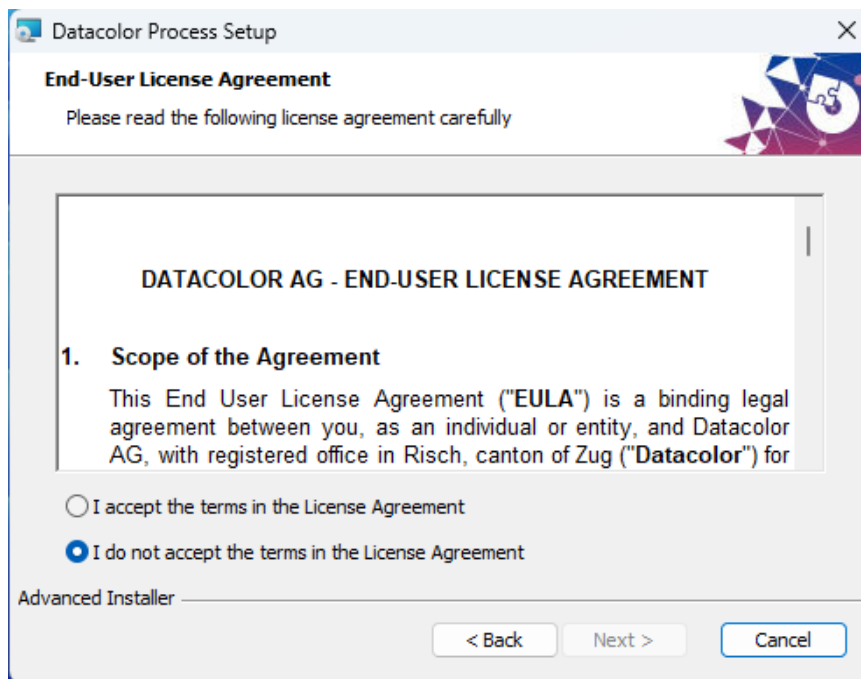


When the Main Installation Menu is displayed, choose —**Install Datacolor PROCESS** The Datacolor Process installation will guide you through installing Datacolor Process on your computer

The setup continues with the Welcome dialog



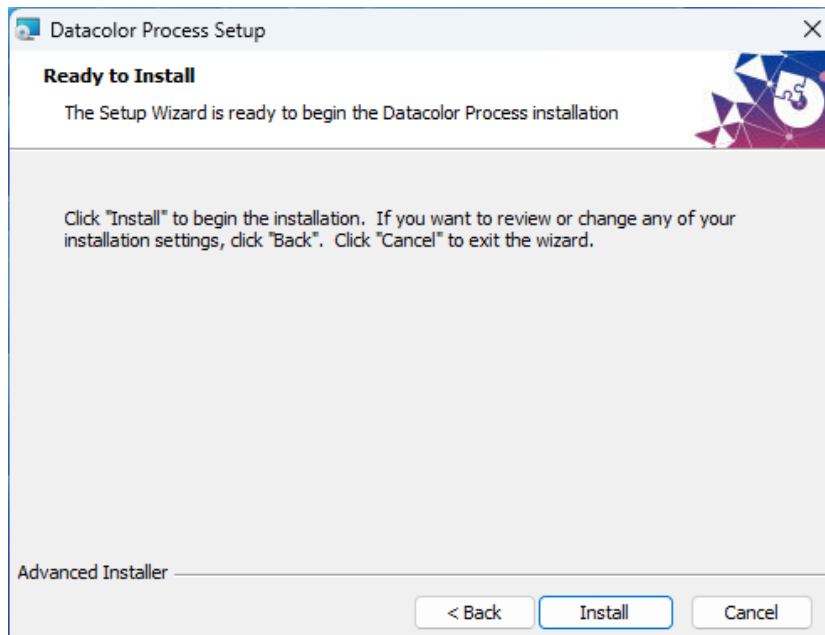
If you are installing Datacolor PROCESS for the first time, click **Next** to access the Datacolor Software License Agreement dialog. You must select the acceptance radio button in order to install Datacolor PROCESS



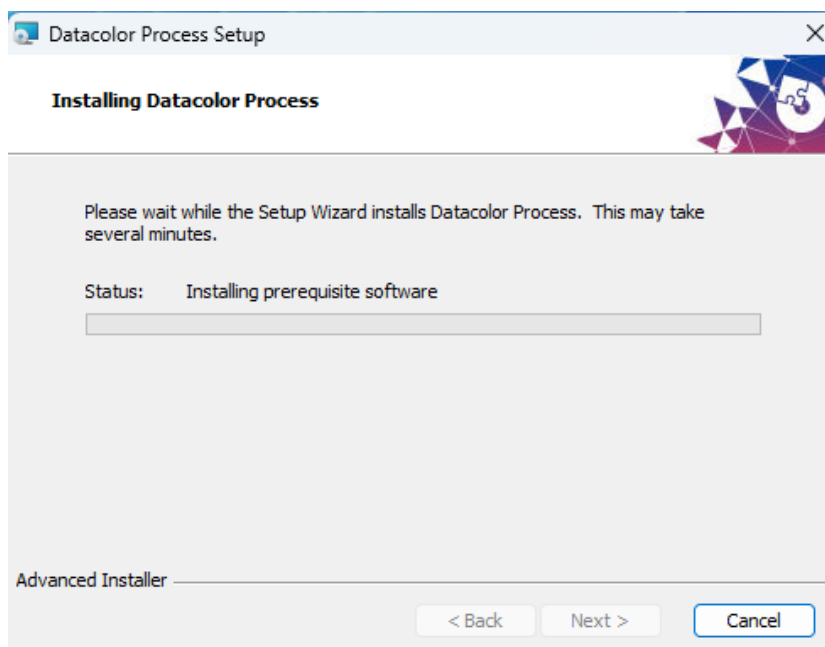
Check the license agreement and click the —**Next** button to proceed.

3.1.1 Ready to Install

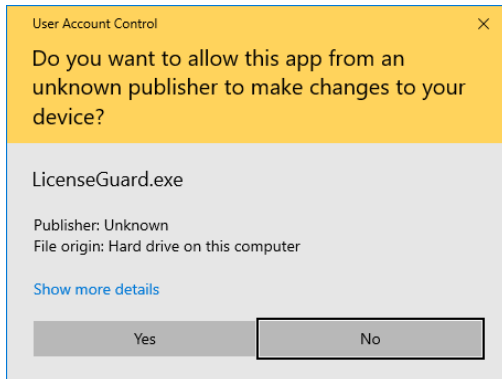
Select the install button to begin the installation.



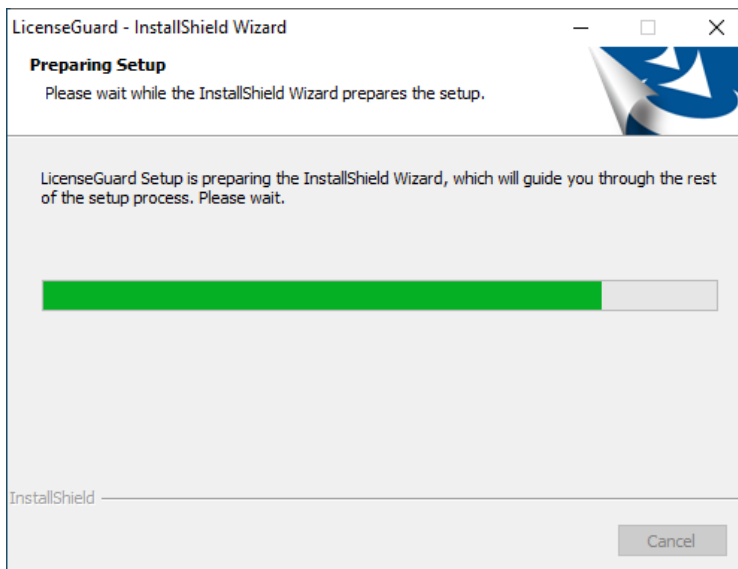
Setup starts transferring the files



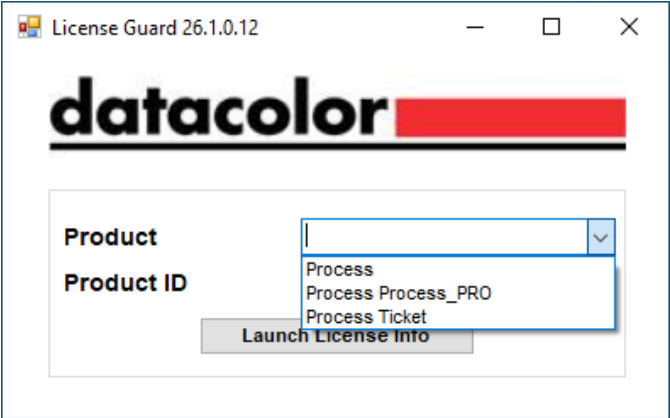
The installation will then ask for the License Guard to be installed:



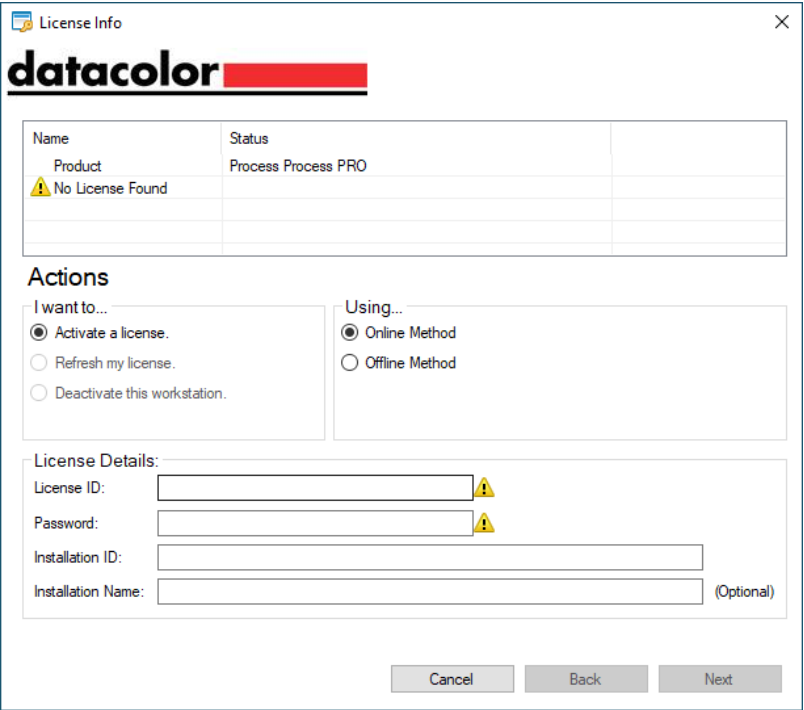
It might ask you to allow the License Guard to make changes to your computer, Select 'Yes'

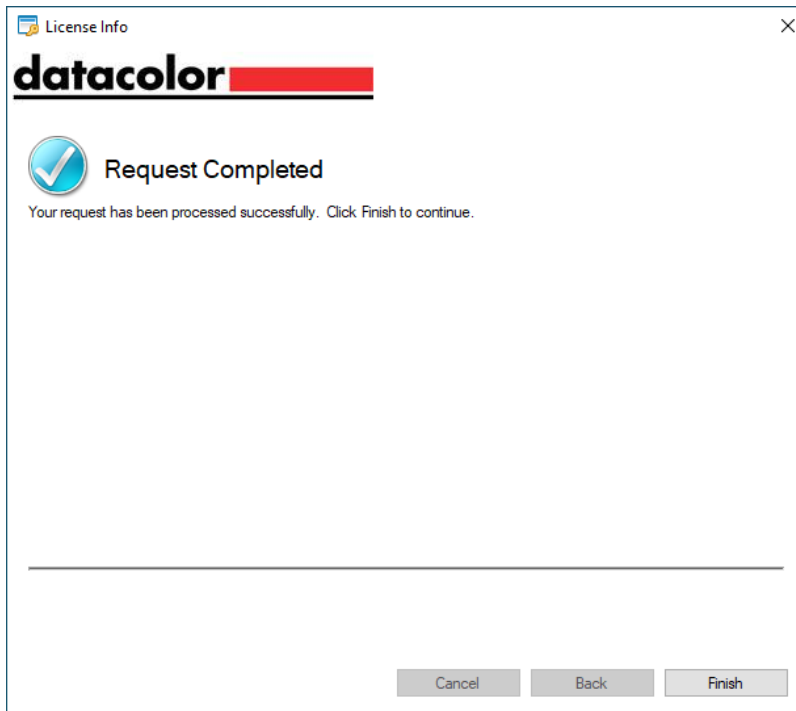


Now the License Guard will ask for your Product Level:

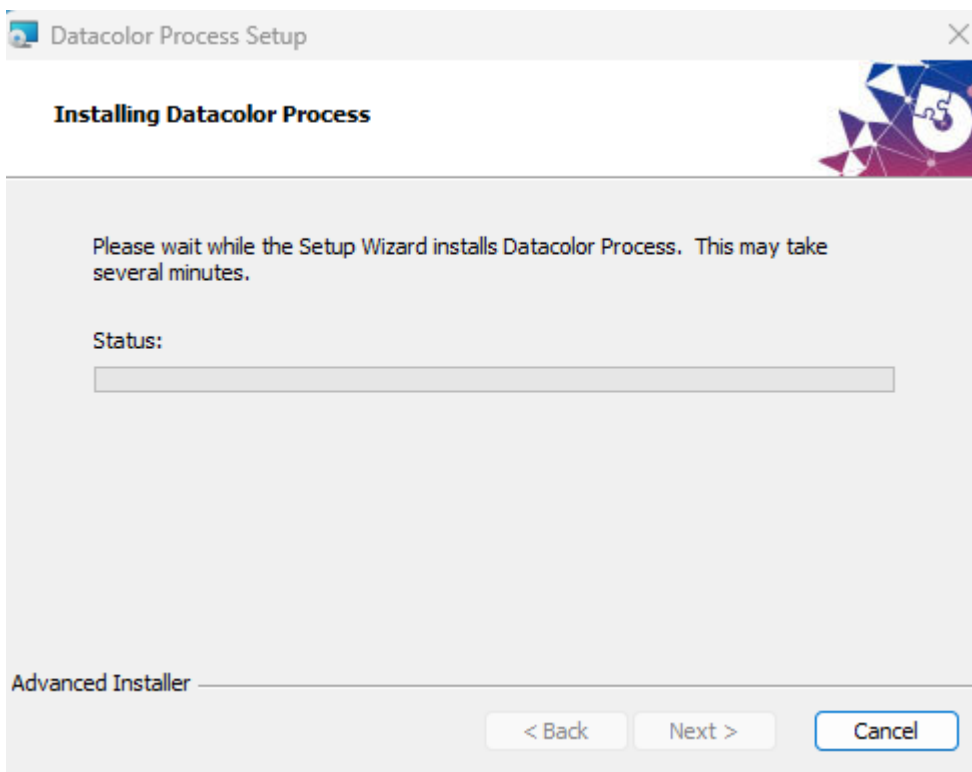


Enter the License ID and the password from the email you received from Datacolor and press the Next Button:



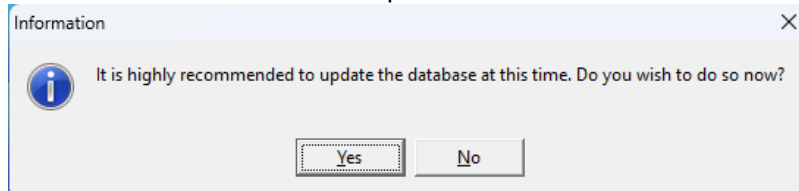


The software is now activated. Press the Finish button and the Installation will continue:

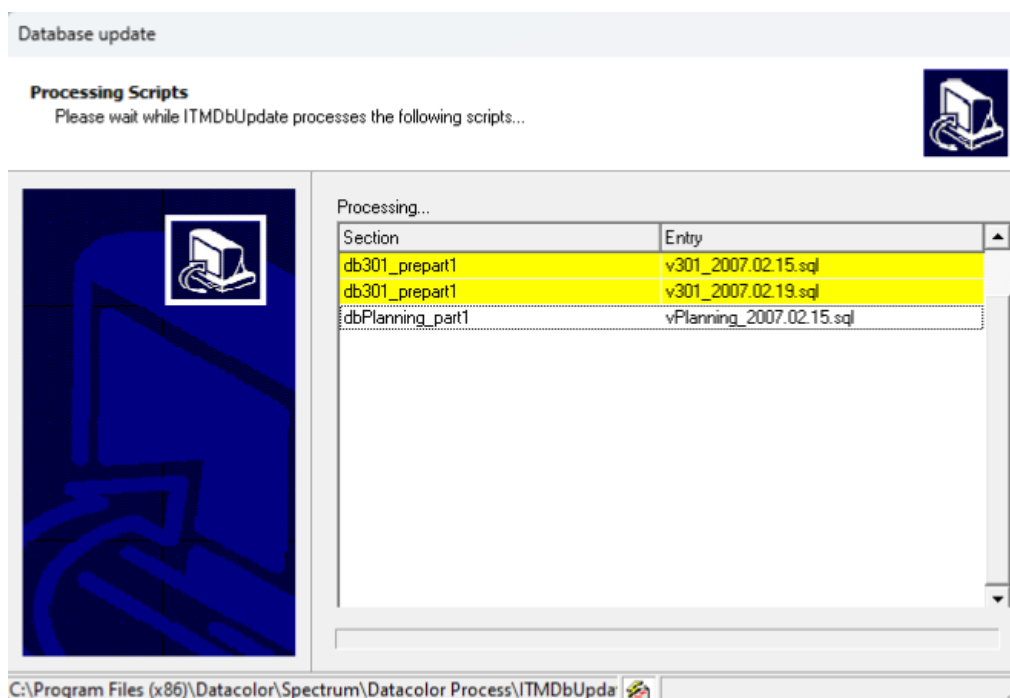


The Installation will continue to install the necessary files for Datacolor Process

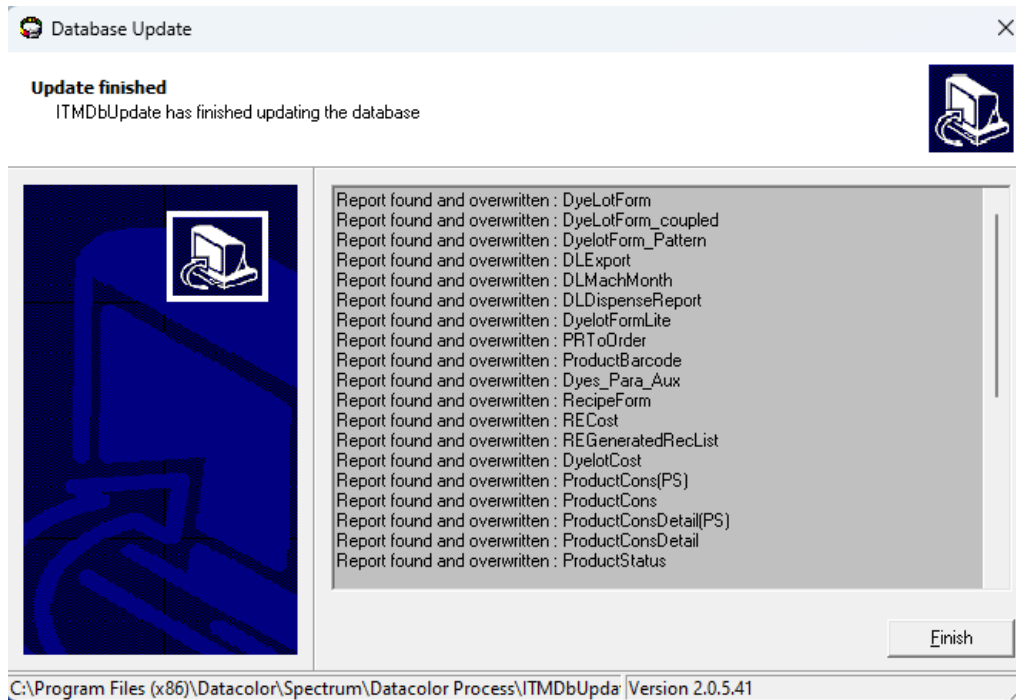
The installation wizard asks to update the database



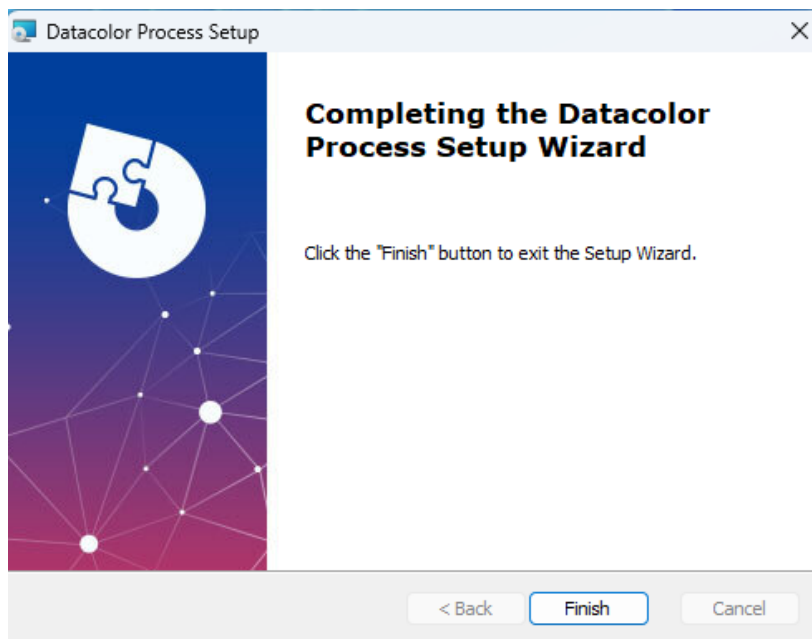
Select Yes, and you will see the database update scripts being run:



When all the updates have been completed you will see the Updated Finished Dialog:



Finally, you will see the Installation Complete Dialog



Click **"Finish"** to exit the installation.

Datacolor Ticket is now installed on your system!

4 Creating a Sybase Service

Refer to the document [SybaseInstallationGuide_Rev_14.pdf](#) on the Sybase 17 ISO for information on creating a Sybase Service

Refer to the document [DatacolorUpgradeGuide_Rev_14.pdf](#) for upgrading from Sybase 12.