

# Datacolor SORT<sup>®</sup>



# Installation Instructions



## **Datacolor SORT™ Stand-Alone Installation Guide**

All efforts have been made to ensure the accuracy of the information presented in this format. However, should any errors be detected, Datacolor appreciates your efforts to notify us of these oversights.

Changes are periodically made to this information and are incorporated into forthcoming versions. Datacolor reserves the right to make improvements and/or changes in the product(s) and/or program(s) described in this material at any time.

© 2026 Datacolor. Datacolor, SPECTRUM and other Datacolor product trademarks are the property of Datacolor.

Microsoft and Windows are either registered trademarks of Microsoft Corporation in the United States and/or other countries.

To obtain information on local agents, sales or support contact, visit our website at <https://www.datacolor.com/contact/business-solutions-contacts/>

### **Support Questions?**

If you need help with a Datacolor product, please contact support at: <http://industrial.datacolor.com/support>.

# Contents

<b>INTRODUCTION .....</b>	<b>4</b>
SYSTEM REQUIREMENTS .....	5
SYBASE DATABASE INSTALLATION .....	5
TERMINAL SERVER CONFIGURATIONS .....	5
NEW INSTALLATION VS. UPGRADE .....	5
FIREWALL BLOCKING MESSAGES.....	5
<b>DATACOLOR SORT INSTALLATION .....</b>	<b>6</b>
OVERVIEW.....	6
INSTALLATION PROCEDURE.....	7

# Introduction

---

This document will provide information on how to install Datacolor Sort on a new system or as an upgrade for an existing installation.

This document is for stand-alone computer systems.

## The installation procedure includes the following steps:

- **Installation of Sybase Database Management Software**

Sybase is a database management system that is required to run Datacolor software. You will need the ISO image labeled "Sybase" to begin the installation process. Sybase V17.0.10.6089 must be installed **before** installing or updating Datacolor Match Pigment.

- **Installation of Datacolor SORT**

The Datacolor Sort program is on a separate ISO image and must be installed **after** installing Sybase.

- **Software License Validation**

The installation will ask you to activate your license. Make sure you have a valid activation code, and that the maintenance date expiry of that license is greater than the release date of the installer. For Offline and Local License Server activation and installation, please refer to their respective installation instructions.

---

## System Requirements

Follow the link below for information on the system requirements:

<https://www.datacolor.com/business-solutions/downloads>

Please contact Datacolor for Terminal Server hardware and software requirements.

---

## Sybase Database Installation

Sybase is a database management system that is required to run Datacolor software. Sybase V17 must be installed **before** installing or updating Datacolor Match Pigment.

*For step-by-step instructions, see the Installation Instructions found on the installation menu of the SYBASE ISO image. To view a PDF version, browse to the folder "Documents" on the SYBASE ISO image and select the file "Sybase Installation Guide.pdf".*

---

## Terminal Server Configurations

*For information on installing Datacolor Match Pigment on a terminal server, please see the Installation Instructions found on the installation menu of the SYBASE ISO image. To view a PDF version, browse to the folder "Documents" on the SYBASE ISO image and select the file "Sybase Installation Guide.pdf".*

---

## New Installation vs. Upgrade

When preparing to upgrade your system, we strongly recommend the following:

- Restart the system before you begin the upgrade. ***This is especially important if you are running a previous release of Datacolor SORT.*** This is done to clear the memory of any modules that might interfere with the program upgrade.

---

## Firewall Blocking Messages

If you have enabled a firewall on the system, you may see a Windows Security dialog box on several occasions during the installation.

You must click **Unblock** to continue the installation.

# Datacolor SORT Installation

---

## Overview

The Datacolor SORT product includes SORT® contained an ISO image. *Please follow these instructions to ensure successful installation of Datacolor SORT®.*

### NOTE

If Sybase V17 is not installed on the system you cannot complete the installation of Datacolor SORT®.

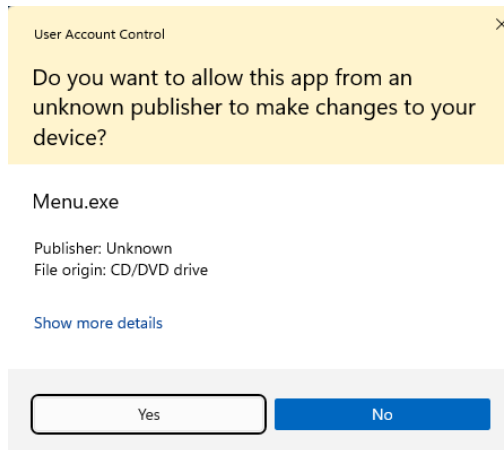
## Before You Begin

- Microsoft Windows® should be properly installed on your computer.
- You must have Windows Administrator right to install this software.
- **Restart the system before installing the software.** This removes any memory-resident modules that may interfere with the installation and is especially important if you have been running a previous version of Datacolor SORT®.
- Install Sybase V17 database management software.
- Close all other programs that are running.
- Have all program installation ISO images readily available..

## Installation Procedure

To install Datacolor SORT®:

1. Download the ISO image installer and mount it on your machine. Run Menu.exe and a prompt will be displayed.



Click **Yes**.

The Datacolor SORT® installation menu should appear automatically:



If you do not see the Datacolor SORT® installation menu, do the following:

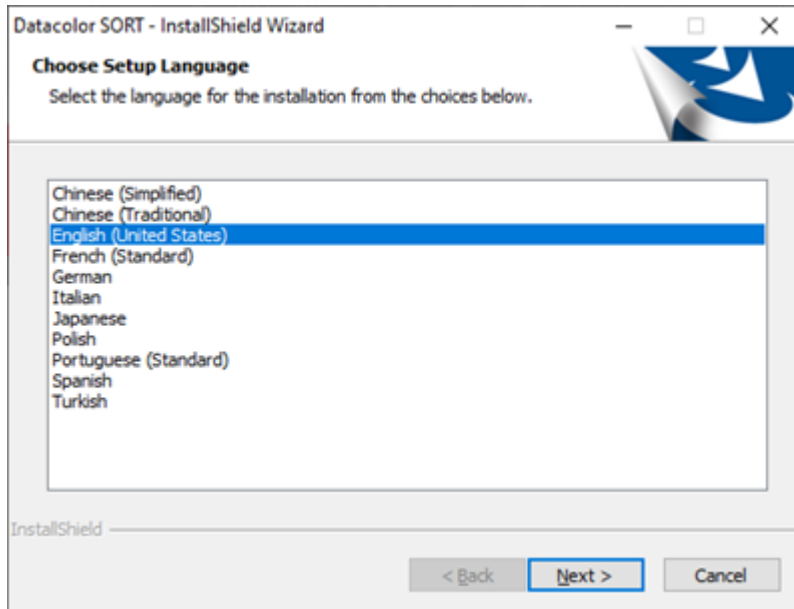
- Click the **Start** button.
- From the Start menu, choose **Run**.
- In the Run dialog box, type **D:\MENU** and click **OK**.

**NOTE**

If your mounted ISO drive is a letter other than D, use that letter in the dialog box.

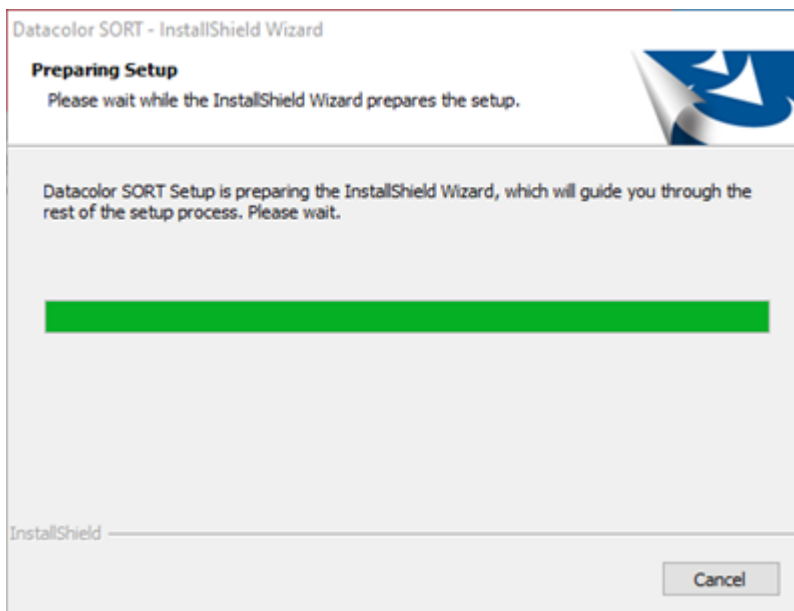
2. Click on **Install Datacolor SORT®**.

The Datacolor SORT installation will prompt you to select a language:

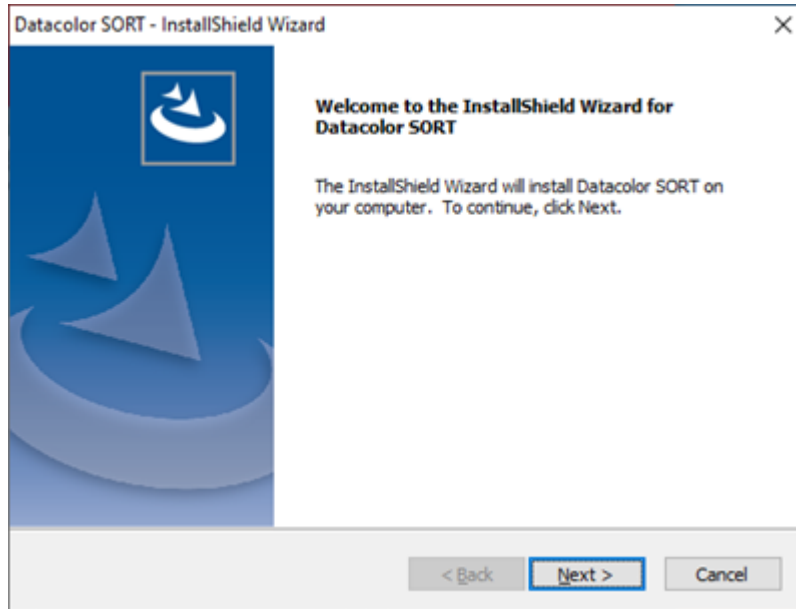


Select the appropriate language and click **Next**.

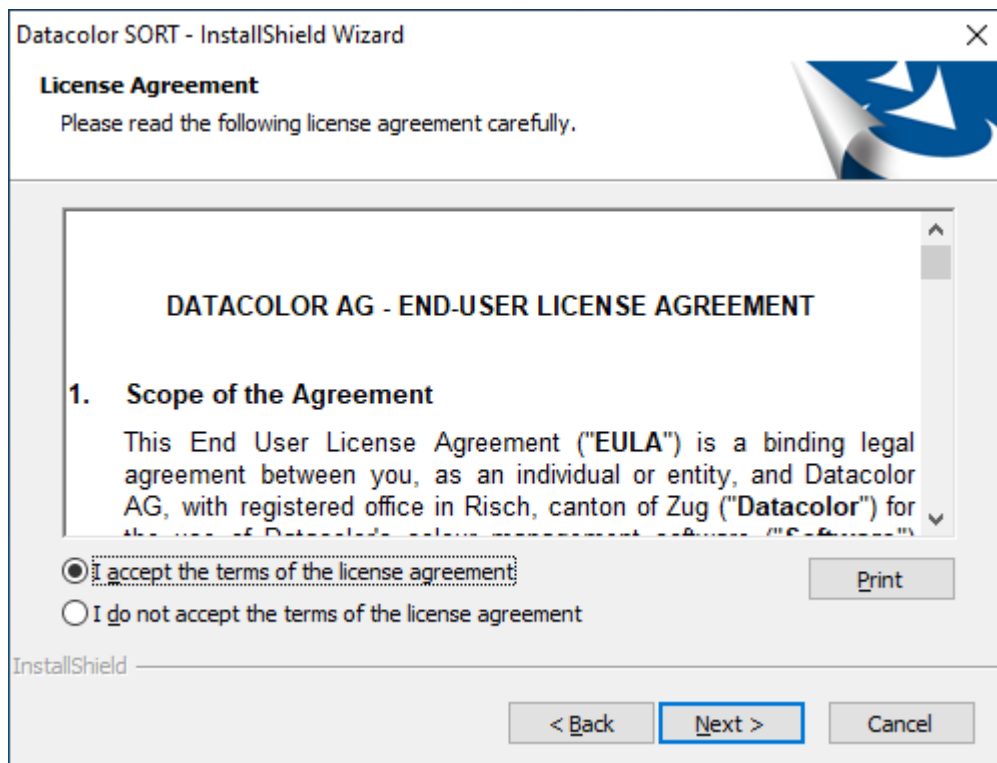
3. It will prepare setup.



4. Click **Next** button on the InstallShield Wizard to continue.



5. A software license agreement is displayed:



To continue with the installation, you must accept the agreement and click on **Next**.

6. The Customer Information dialog will show up. Enter the names of User and Company, then click on **Next** button to continue.

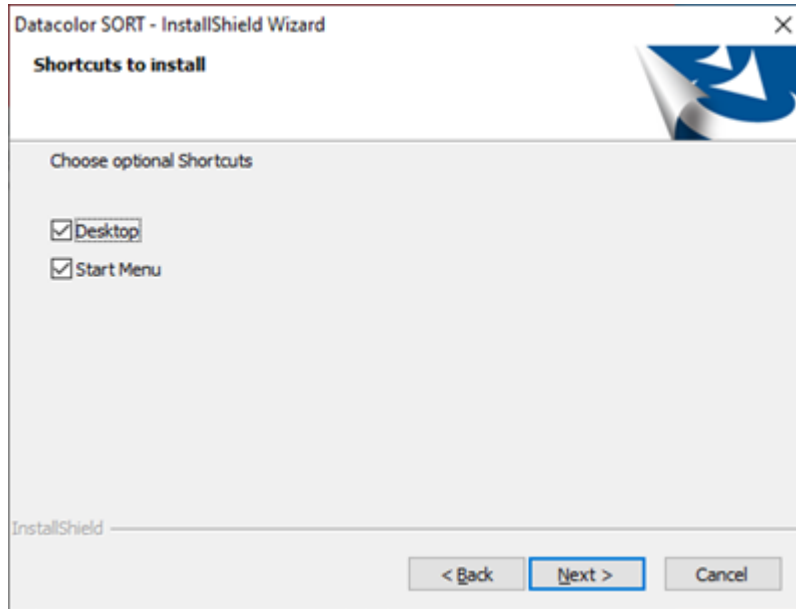
The screenshot shows a dialog box titled "Datacolor SORT - InstallShield Wizard". The main heading is "Customer Information" with the instruction "Please enter your information." Below this, a sub-instruction says "Please enter your name and the name of the company for which you work." There are two text input fields: "User Name:" containing "Windows User" and "Company Name:" containing "DCI". At the bottom, there are three buttons: "< Back", "Next >" (highlighted with a blue border), and "Cancel". The "InstallShield" logo is visible in the bottom left corner.

7. The program confirms the folder location for Datacolor SORT.

The screenshot shows a dialog box titled "Datacolor SORT - InstallShield Wizard". The main heading is "Choose Destination Location" with the instruction "Select folder where setup will install files." Below this, there is a folder icon and the text "Install Datacolor SORT to: C:\Program Files (x86)\Datacolor". A "Change..." button is located to the right of the path. At the bottom, there are three buttons: "< Back", "Next >" (highlighted with a blue border), and "Cancel". The "InstallShield" logo is visible in the bottom left corner.

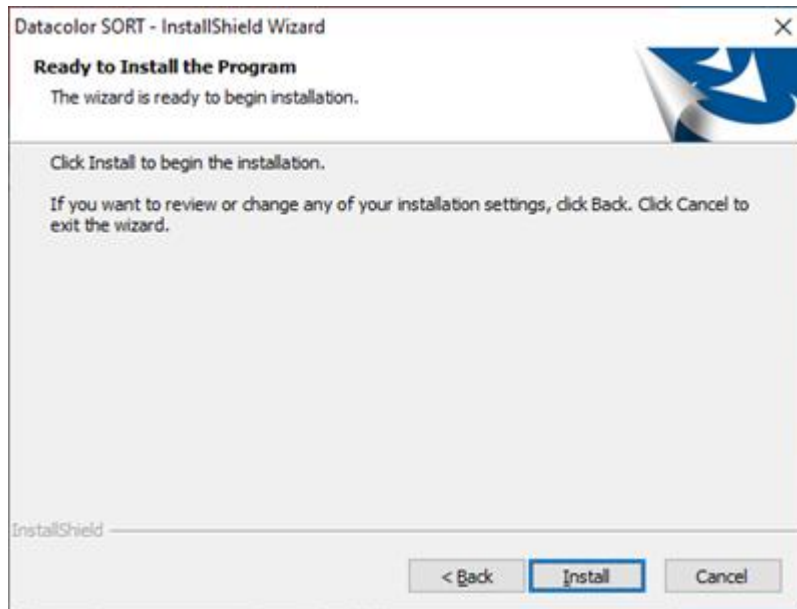
- To select a different location for programs, click **Change...** button.
- To accept the default, click **Next** (recommended).

8. Desktop and Shortcut Options.



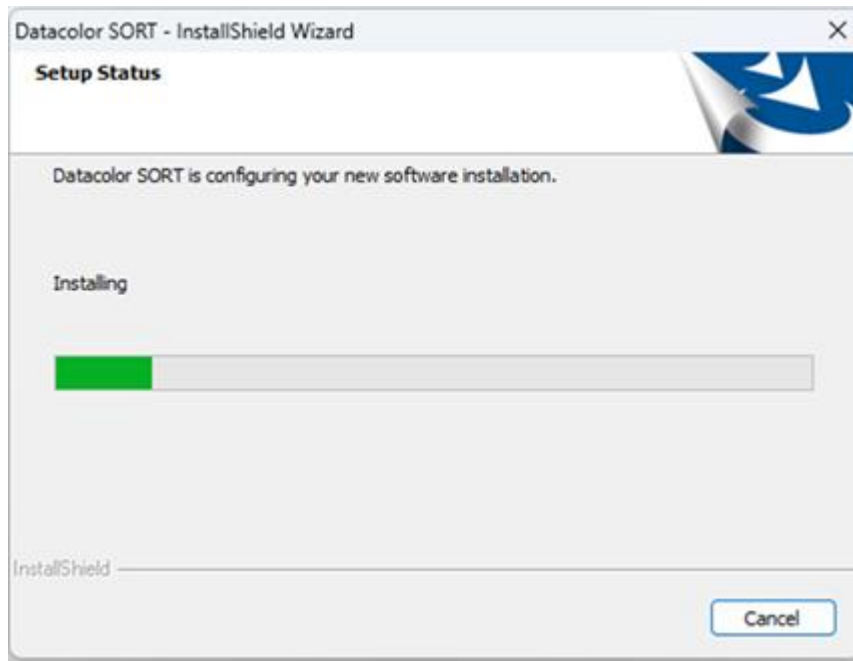
Choose the optional shortcut, then click **Next** button to continue.

9. The dialog of "Ready to Install the Program" will show up.

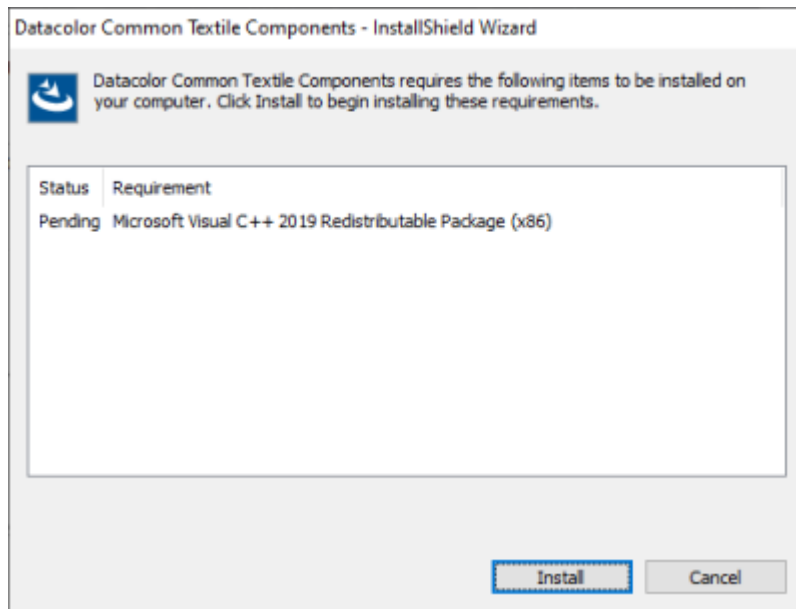


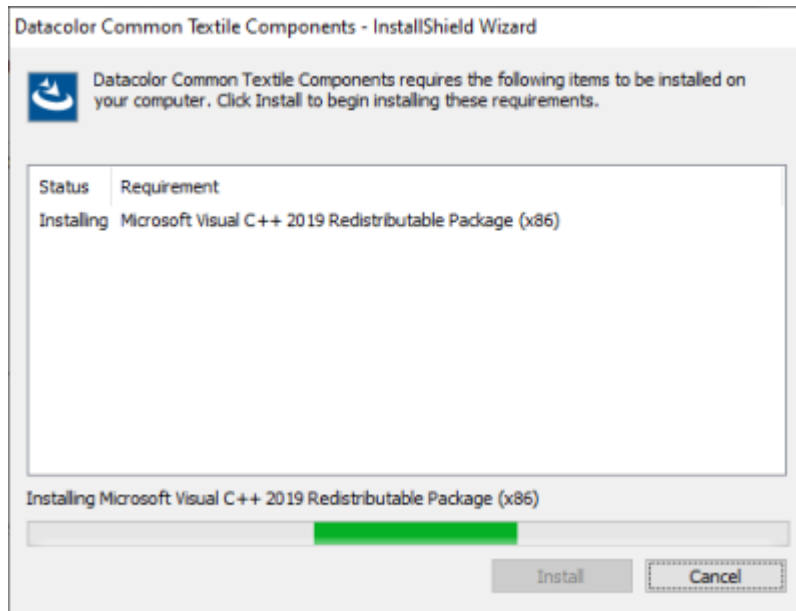
Click **Install** button to continue.

10. It will start with the configurations and installations for the program and the required components.

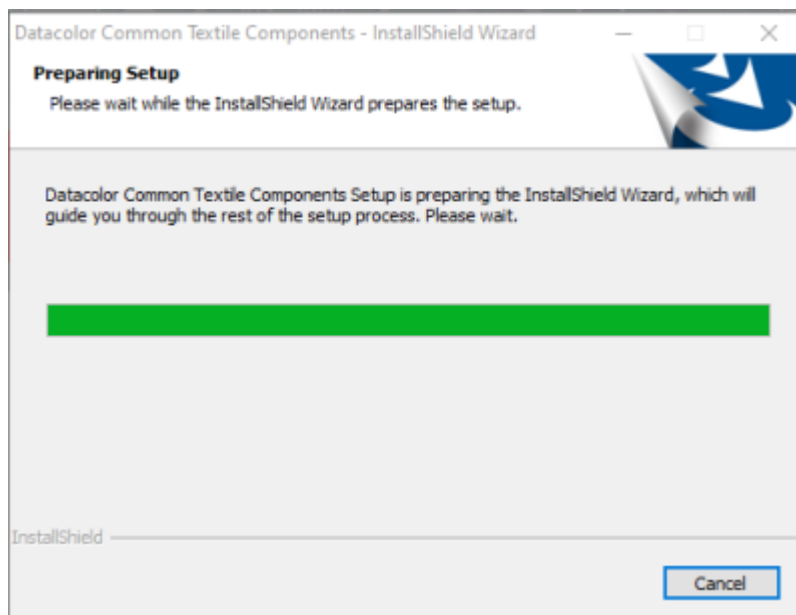


11. Optional: the VS C++ 2019 Redistributable Package (x86) will be prompted, if it is not installed yet. Click **Install** button.

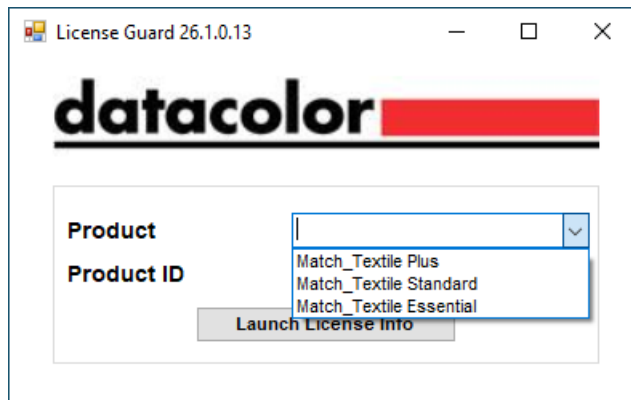




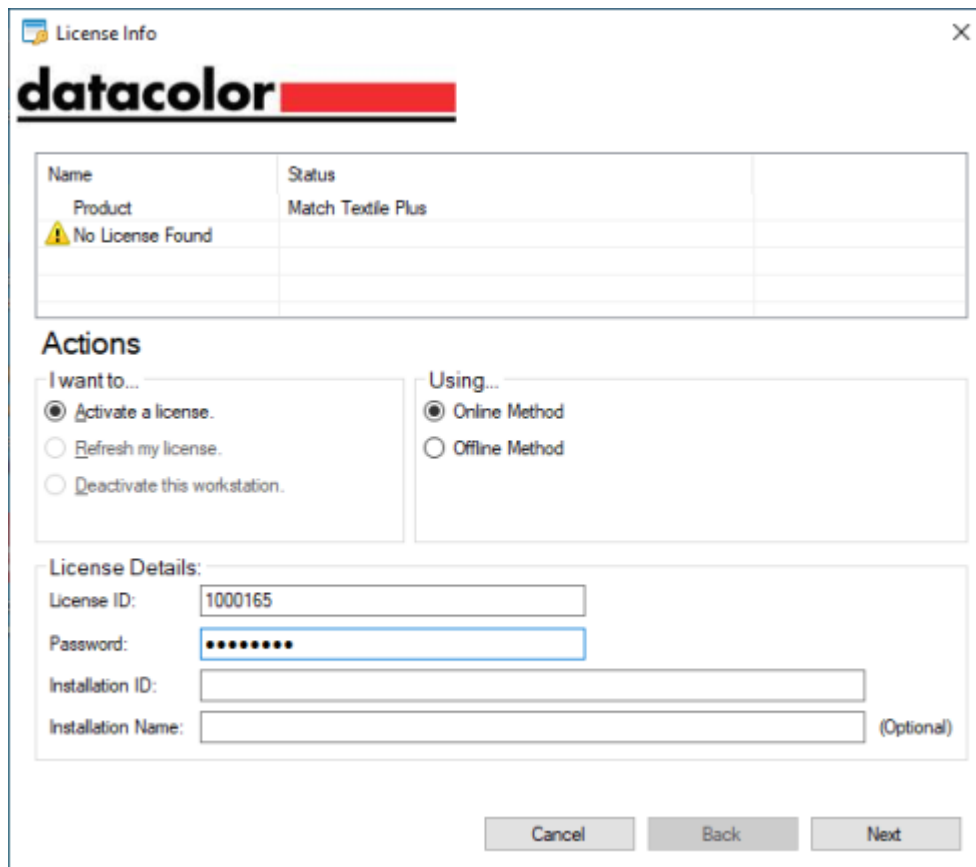
12. The License Guard components will now be installed for preparing setup, if it is not installed yet.



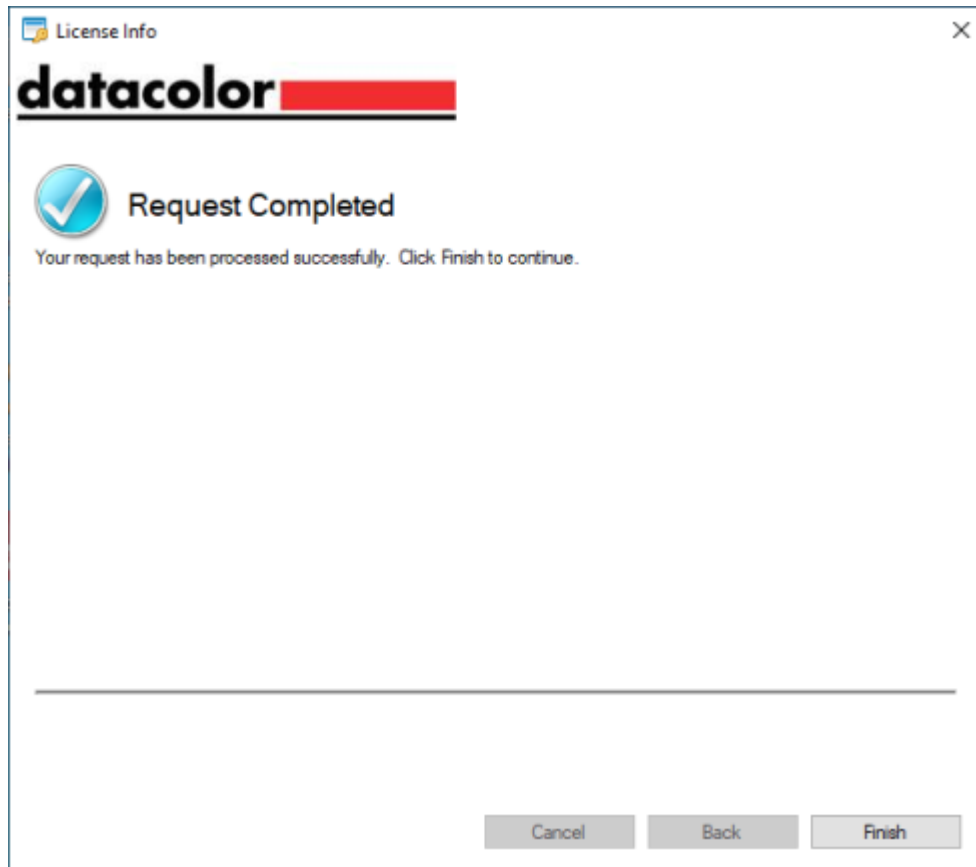
13. After License Guard is installed, the software will check if a license is installed. If there is no license installed, a License Guard window will pop up with a drop-down box selection of licenses you can activate.



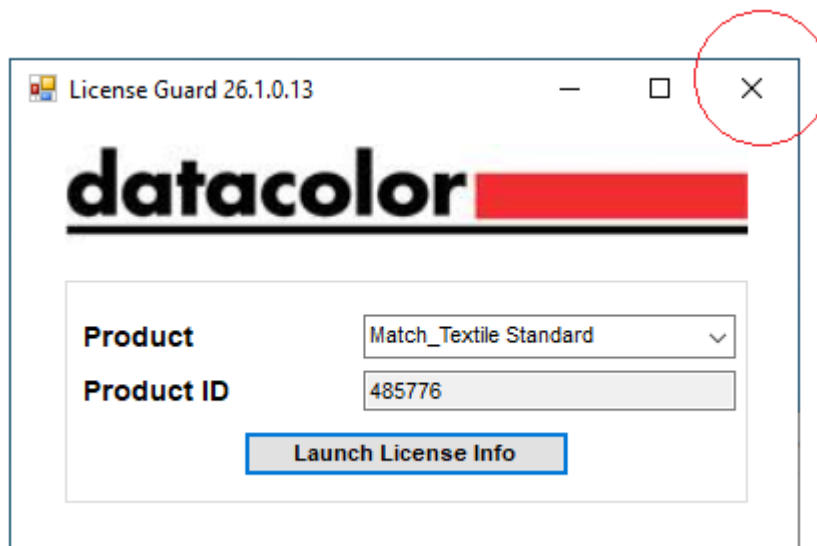
14. Choose a license to activate and click the “Launch License Info” button and the License Info window is displayed:



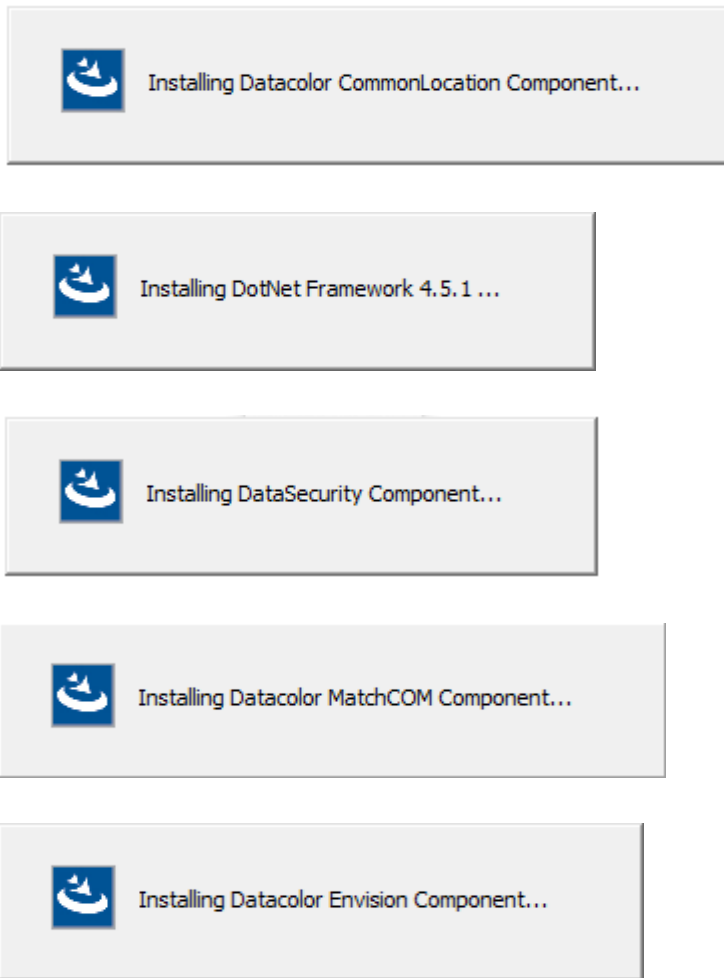
Enter the **License ID** and **Password**. Then click **Next** button to activate the selected license. After the activation completed, click the **Finish** button (see below) to close the License Info dialog box.



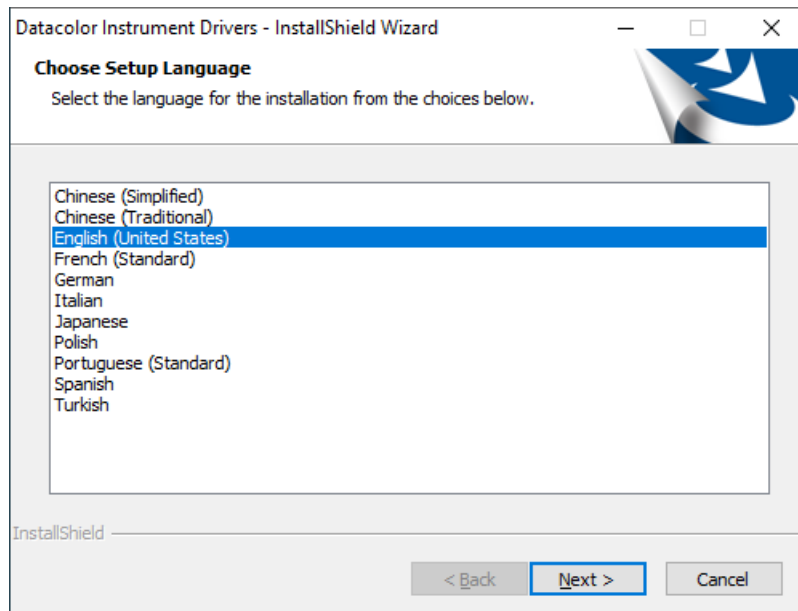
15. Click the Close button ('X' at top-left corner) to close the License Guard dialog.



16. It will start with the configurations and installations for the program and the required components.

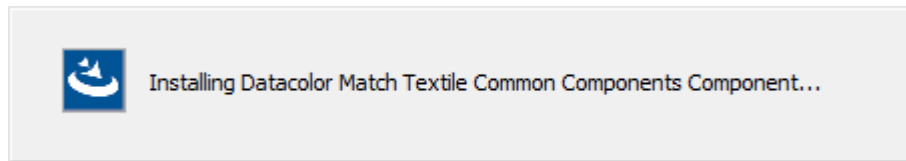


17. The "Choose Setup Language" dialog will show up for Installing Instrument Drivers.

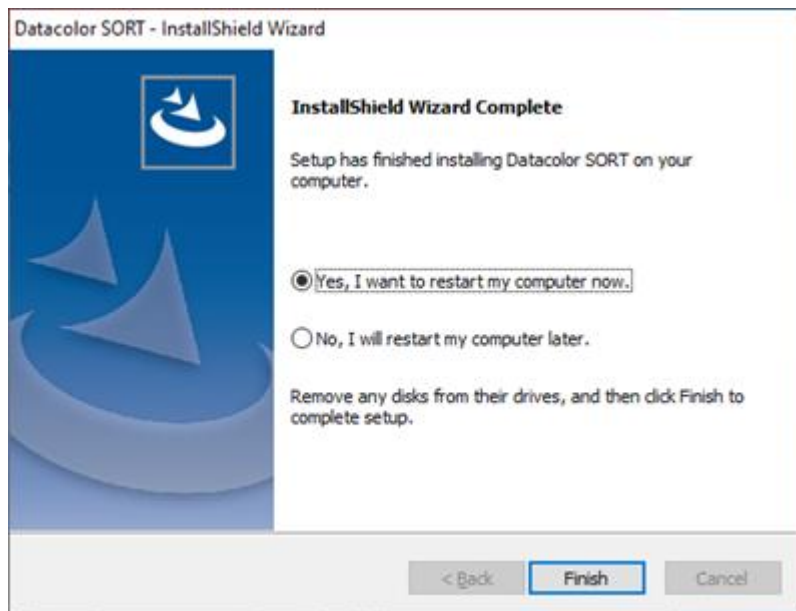


Select the language and click **Next** button to continue.

18. Then, it will install Datacolor Match Textile Common Components.



19. Complete the installation



Select **Yes** (recommended) and Click **Finish** to continue.

20. **Datacolor SORT® is now installed on your system.**

