

# Datacolor TOOLS SV

## Installation Instructions





**Datacolor TOOLS SV Installation Guide**  
(January 2026)

All efforts have been made to ensure the accuracy of the information presented in this format. However, should any errors be detected, Datacolor appreciates your efforts to notify us of these oversights.

Changes are periodically made to this information and are incorporated into forthcoming versions. Datacolor reserves the right to make improvements and/or changes in the product(s) and/or program(s) described in this material at any time.

©Copyright 2025 Datacolor. All rights reserved. Datacolor is a registered trademark of Datacolor.

Microsoft and Windows are either registered trademarks of Microsoft Corporation in the United States and/or other countries.

To obtain information on local agents, sales or support contact, visit our website at <https://www.datacolor.com/contact/business-solutions-contacts/>

**Support Questions?**

If you need help with a Datacolor product, please contact support at: <http://industrial.datacolor.com/support>.

# Contents

<b>INSTALLATION OVERVIEW .....</b>	<b>4</b>
INTRODUCTION.....	4
SYSTEM REQUIREMENTS .....	5
DATABASE INSTALLATION.....	5
SETUP TYPE.....	5
<b>DATACOLOR TOOLS SV INSTALLATION .....</b>	<b>6</b>
OVERVIEW.....	6
BEFORE YOU BEGIN.....	6
DATACOLOR TOOLS SV INSTALLATION PROCEDURE .....	7
LAUNCHING DATACOLOR TOOLS SV .....	15
<b>APPENDIX .....</b>	<b>16</b>
INSTALLING DATACOLOR TOOLS SV USING MS-SQL .....	16

# Installation Overview

---

## Introduction

This document provides the procedures required to install and license Datacolor TOOLS SV in a stand-alone configuration. This procedure includes the following steps:

Installation of Datacolor TOOLS SV

Licensing of Datacolor TOOLS SV



### NOTES

If Sybase V17.0.10.6089 is not installed on the system, you cannot complete the installation of Datacolor TOOLS. You must first install Sybase V17.0.10.6089 *also Sybase Installation Guide for detailed instructions.*

---

---

## System Requirements

Follow the link below for information on the system requirements:

<https://www.datacolor.com/business-solutions/downloads>

**Please contact Datacolor for Terminal Server hardware and software requirements.**

---

## Database Installation

Datacolor TOOLS SV runs under Sybase and MS-SQL. The majority of installations use the Sybase database management program.

### Sybase Database

Sybase is a database management system and is required to run Datacolor TOOLS. Sybase V17.0.10.6089 must be installed to install or update Datacolor Tools. See also Sybase V17.0.10.6089 Installation guide for installation instructions for both new installations and Sybase updates..

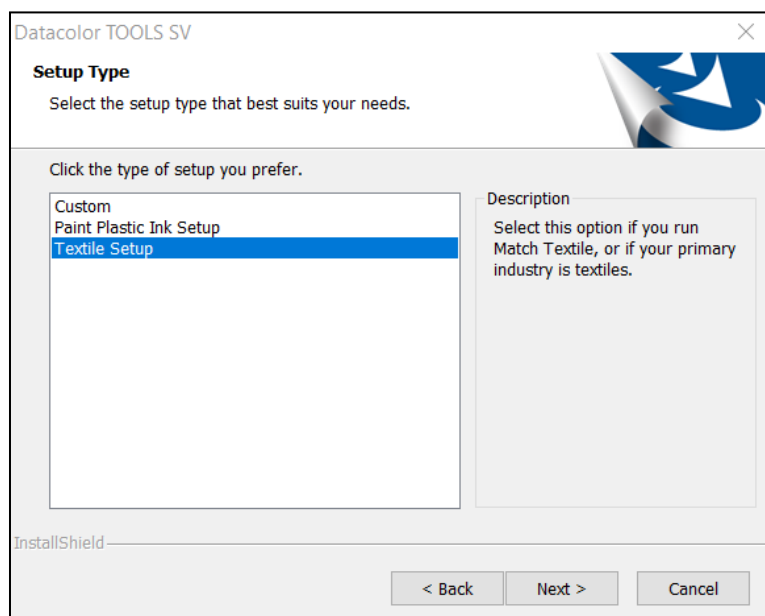
### MS-SQL Database

Some systems use MS-SQL for database management. If your previous version of Datacolor Tools SV was using an MS-SQL database, the program update does not install Sybase Adaptive Server. *See also Appendix, Installing Datacolor TOOLS SV Using MS-SQL in this guide for information on the MS-SQL setup.*

---

## Setup Type

The most critical selection you will make during the Datacolor TOOLS SV installation is the Setup Type:



This selection determines the database structure created for your TOOLS SV data and defines the Datacolor color formulation programs that can share data with TOOLS SV. Review the table below carefully before making this selection.

---

#### **⚠ IMPORTANT**

If you add color formulation software at a later time, this selection determines whether you can share Datacolor TOOLS SV data with the color formulation program.

**⚠** Currently, TOOLS SV cannot be installed on the same computer system as Match Pigment and TOOLS shipping version.

---

Setup Type	Program Compatibility
Custom Setup	<b>NOT RECOMMENDED FOR MOST APPLICATIONS</b> Allows you to install specific features of Datacolor TOOLS SV. This is provided only for use by Datacolor representatives.
Paint Plastic Ink Setup	This is used by manufacturers that color products using pigments, typically paint, coatings, plastics, and ink applications. It is the required selection if you will be adding Datacolor MATCH Pigment at a later time.
Textile Setup	This is used by the manufacturers of textile products. It is the required selection if you will be adding Datacolor MATCH Textile at a later time.

# Datacolor TOOLS SV Installation

---

## Overview

---



### NOTE

If Sybase V17.0.10.6089 is not installed on the system you cannot complete the installation of Datacolor TOOLS SV.

---



### NOTE

If Microsoft .NET 3.5 SP1 is not presented on the system, Datacolor TOOLS SV setup will install it, and internet connection is not required.

---



---

## Before You Begin

Microsoft Windows® should be properly installed on your computer.

You must have Windows Administrator rights to install this software.

Install Sybase V17.0.10.6089 database management software.

Close all other programs that are running.

Have all program installation ISO readily available.

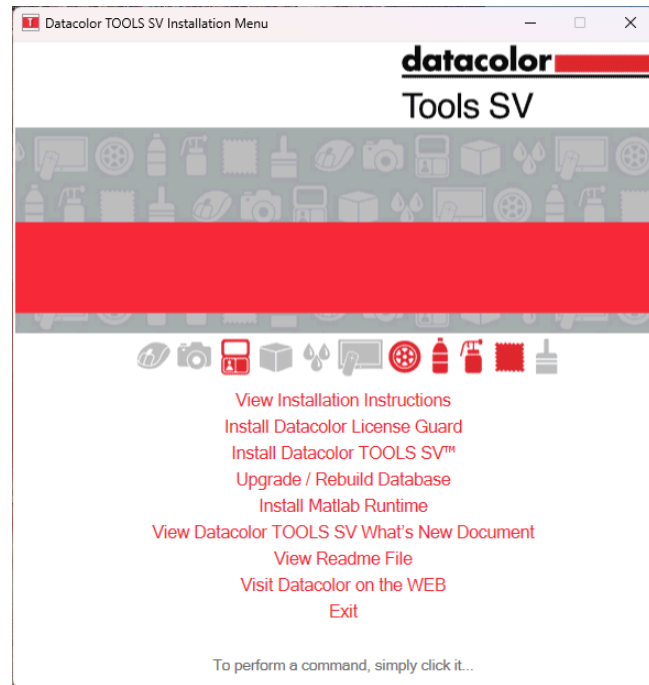
Have a valid license activation code with a maintenance date greater than the release date of the installer. For Offline and local License Server activation and installation, please refer to their respective installation instructions.

---

## Datacolor TOOLS SV Installation Procedure

1. Insert the Datacolor TOOLS SV DVD into the DVD drive.

The installation program should launch automatically, and an installation menu will appear:

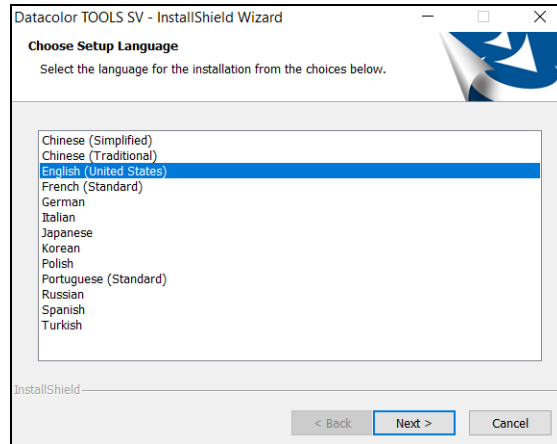


If you do not see this installation menu, do the following:

- Click the **Start** button.
- From the Start menu, choose **Run**.
- In the Run dialog box, type **D:/MENU** and click **OK**. (If your CD drive is a letter other than D, use that letter in the dialog box.)

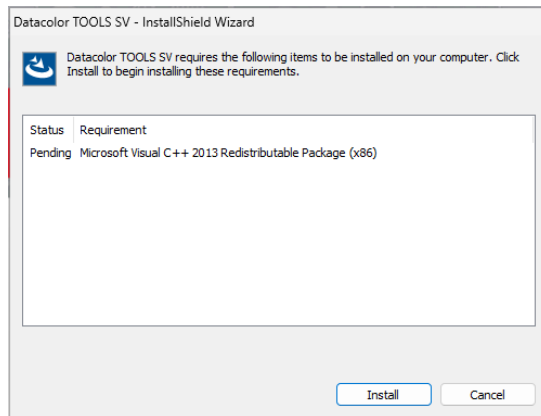
2. Click Install Datacolor TOOLS SV.

3. The Datacolor TOOLS SV installation will prompt you to select a language:



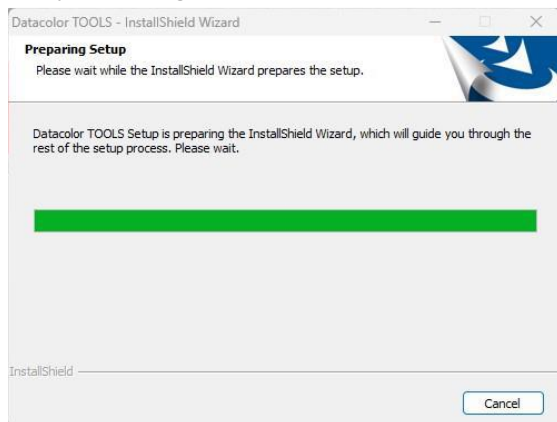
Select the appropriate language and click **NEXT**.

4. You may see a request to install the C++ Redistributable package:



Click **Install**.

5. A window will display **Preparing Setup**.



6. The **License Guard** dialog appears:





- Select **Product: ToolsSV** from the dropdown menu.
- Enter the **Product ID**.
- Press the **Launch License Info** button.

7. The **License Info** dialog appears:

Name	Status
Product	ToolsSV
⚠ No License Found	

**Actions**

I want to...

☒ Activate a license.

☐ Refresh my license.

☐ Deactivate this workstation.

Using...

☒ Online Method

☐ Offline Method

**License Details:**

License ID:  ⚠

Password:  ⚠

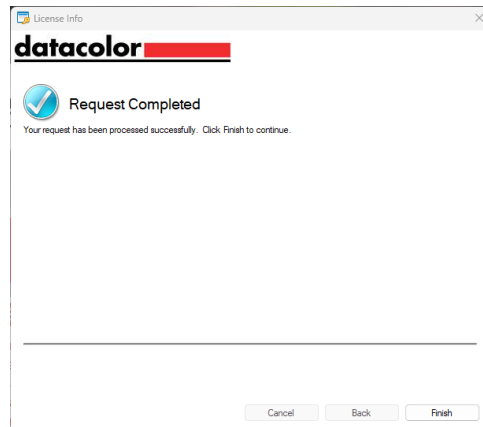
Installation ID:

Installation Name:  (Optional)

Cancel Back Next

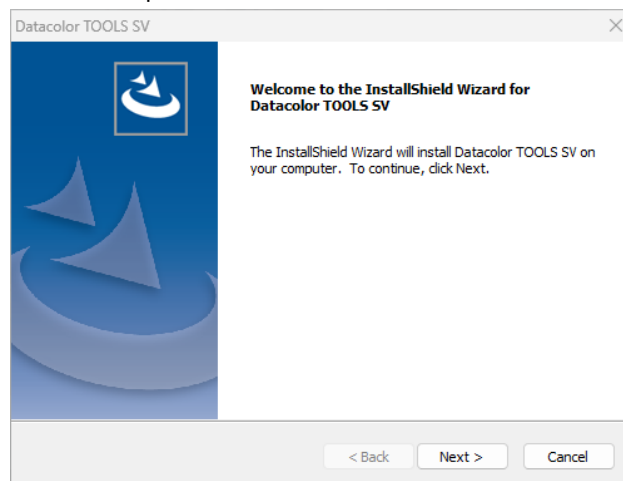
- Enter your **License ID** and **Password**, then press Next.

- The process will start, and if your information is correct, a **Request Completed** dialog will appear.
- Press **Finish** and close the License Guard dialog.



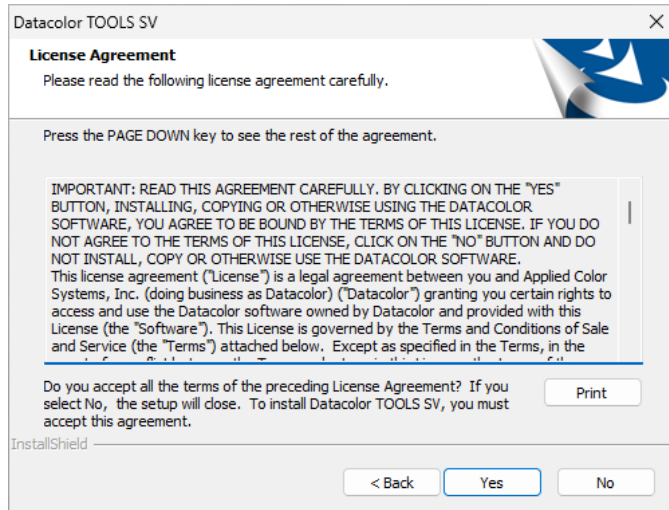
8. If you have an older database on your system, you may be asked:  
"Do you want to back up the database and its log file now?"  
You may answer **Yes**.

9. The Installation wizard will open:



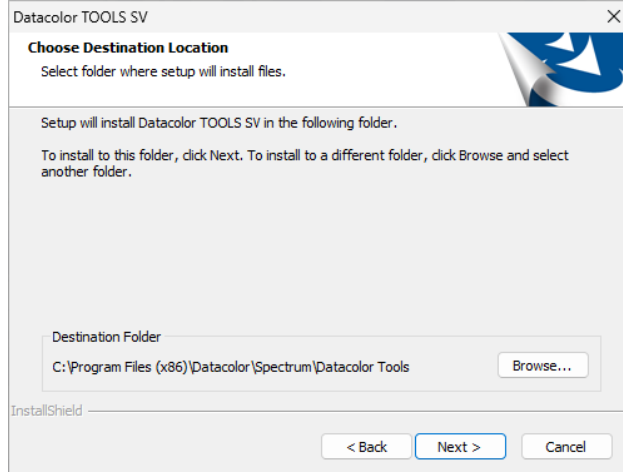
Click **Next** to continue.

10. You will be prompted to accept a software license agreement:



To continue with the installation, you must accept the agreement by clicking **Yes**.

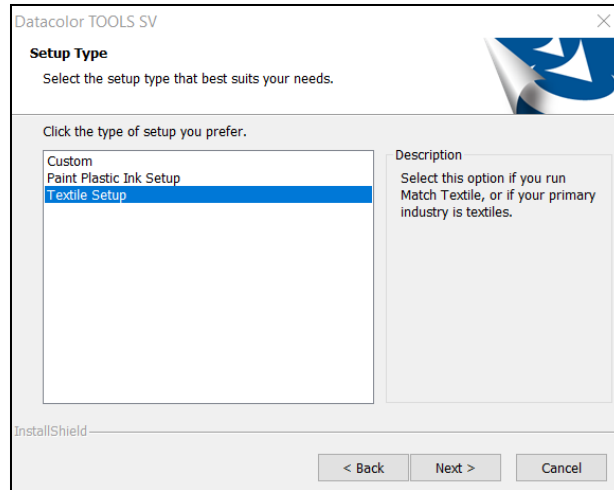
11. The installation procedure will confirm the folder location for Datacolor TOOLS SV:



To select a different folder location, click **Browse**.

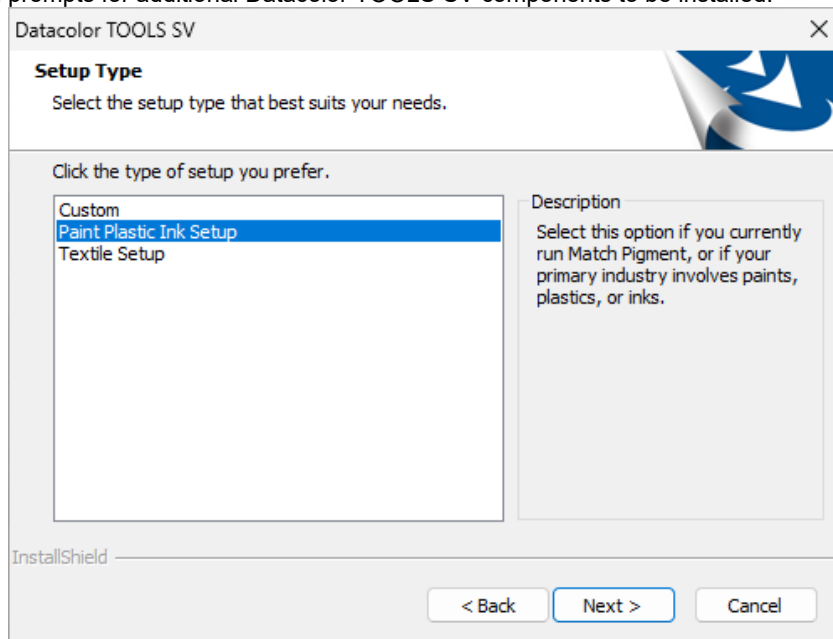
Click **Next** to accept the default location.

12. The program will prompt for a setup type:



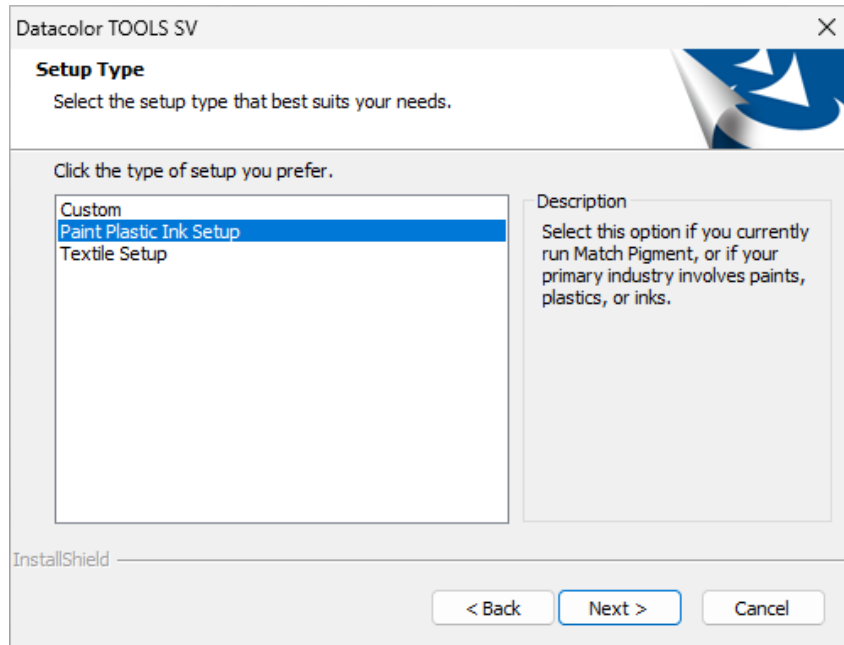
**SETUP TYPE SELECTION IS IMPORTANT!** The most common choices are Textile Setup, and Paint Plastic Ink Setup. These refer to the types of materials you use. *See also Setup Type in this guide for a discussion of this selection.*

13. The program prompts for additional Datacolor TOOLS SV components to be installed:



Make a setup selection and click **Next**.

14. The optional program features that you can choose to install on the system include:



1.

**Form Editor.** This is a separate program that allows you to customize Datacolor TOOLS SV forms. We strongly suggest that you install this program. If you do not and decide to use it later, you must repeat the entire program installation to install it.

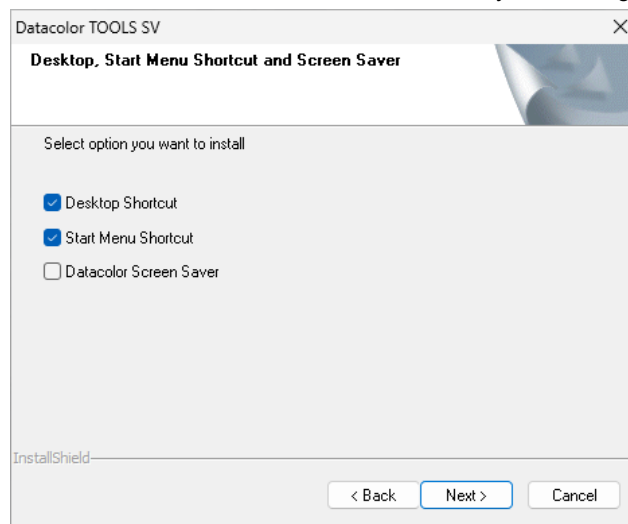
---

**Marks and Spencer Forms.** This option only displays for textile users-

---

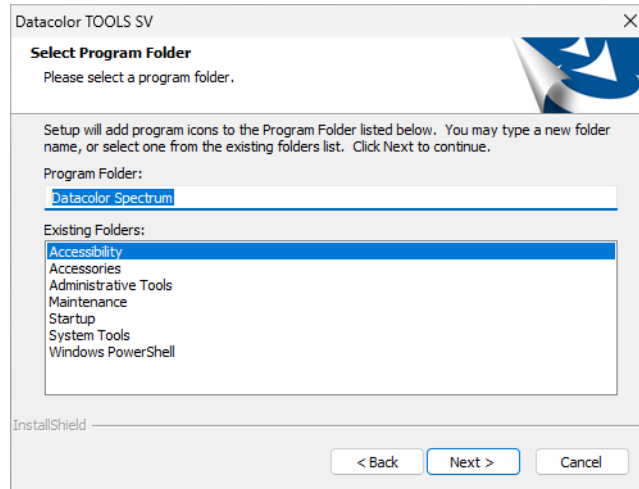
Make the selections appropriate for your application and click **Next**.

15. The Installer will now ask for additional information for the system configuration.



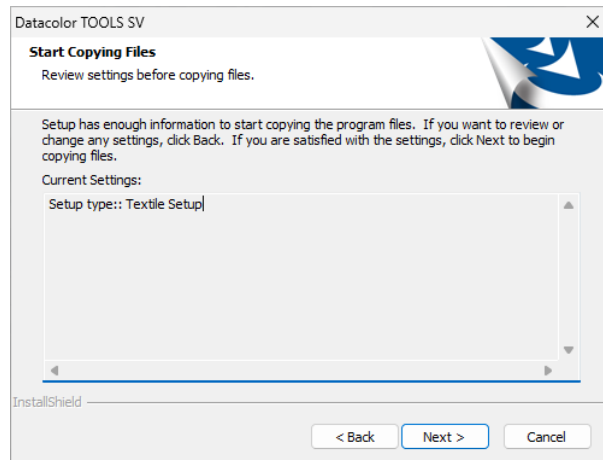
Select the configuration options desired and click **Next**.

16. The installer will ask for the Program folder to install the application to. Use the suggestion "Datacolor Spectrum"



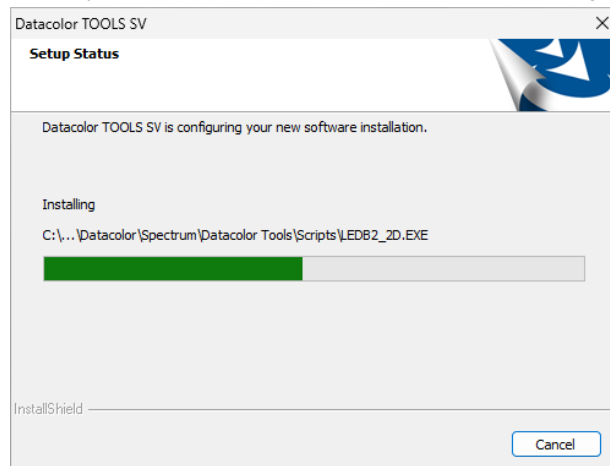
Click **Next**.

17. The Tools SV application will show the Start Copying Files dialog with information about the select configuration.

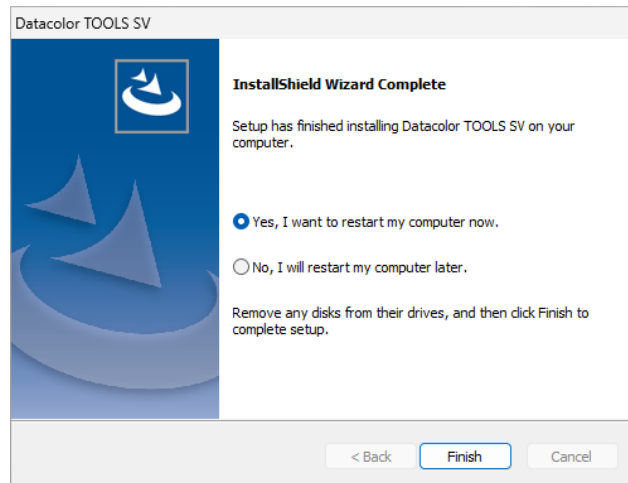


Click **Next**.

18. Installer will now copy the application files needed and show the progress of the copy.



19. When the installation is finished you will see the following.



The installation is now complete.

20. Click **Finish**. To run Datacolor TOOLS SV, you must restart the system. After you have restarted the system, launch Datacolor TOOLS SV immediately.



#### NOTE

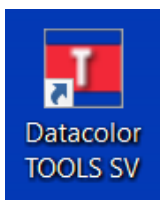
This restart is requested after each Datacolor program is installed. You do not have to restart between each program installation. This is done once after all Datacolor programs are installed.

---

## Launching Datacolor TOOLS SV

Datacolor TOOLS SV can be launched from a program icon on the desktop.

1. Click on the Datacolor TOOLS SV icon on your desktop:



#### NOTE

You can also start by clicking **Start/ Programs/Datacolor Spectrum/ Datacolor TOOLS SV**.

---

**datacolor** [Red Bar]

**Tools SV**

**User name:**

**Password:**

COPYRIGHT © DATACOLOR [Patent: https://www.datacolor.com/patents](https://www.datacolor.com/patents)

#### Textile Setup

- The default user name is **dc**i.
- No password is required for the default configuration.

#### Paint, Plastic Ink Setup

- The default user name is **User**.
- The default password is **CC3**.

2. Enter the appropriate login and password and click **OK**. The Tools desktop will open.

## Appendix

### Installing Datacolor TOOLS SV using MS-SQL

Some systems are using MS-SQL rather than Sybase as the database program. For these systems, the installation procedure differs slightly for both new installations and upgrades.

#### New Installation on MS SQL System

If you are installing Datacolor TOOLS SV for first time and will be using the MS-SQL database program, you must do the following before installing Datacolor TOOLS SV:

From the Windows Control Panel, create the ODBC Data Source Name **dc**i\_itm.

Install Datacolor TOOLS SV.



To create a new MS-SQL database for Datacolor TOOLS SV, we have provided the tool on the DVD to perform this function.

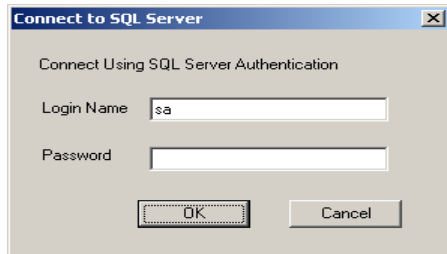
**Script File.** We have created a script file on the Datacolor TOOLS SV DVD in the following location:

**[Drive]:\database\SQL Server\MSSQLUpdate.sql.**

## MS-SQL Upgrade

If your previous version Datacolor TOOLS SV was using MS-SQL database, the setup does **not** install Sybase Adaptive Server. You will not be prompted to update the Sybase program or database during the installation procedure.

If you are not connected to the MS-SQL database server on the local system, during the database upgrade the dialog below will display:



Input the login name and password.

If the user name and password is not correct, you will receive the following error message: "Fail to connect SQL Server, Please make sure Login Name and Password is correct". When this happens, you will have to update database manually after installation.

If there is no password, just leave password as blank.



### NOTE

If you do not want to update MS-SQL database during the installation, click Cancel. You will receive the following message:  
*The SQL Server ColorQC database does not update during installation. You have to update manually after installation.*

---